

User's manual

Wheelchair Ramp

30120, 30121, 30122, 30123, 30124

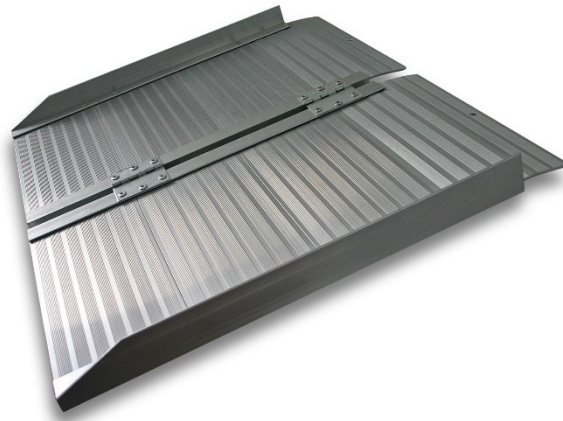


Illustration similar, may vary depending on model

Please read and follow the operating instructions and safety information prior to initial operation.

Technical changes reserved!

Illustrations, functional steps, and technical data may deviate insignificantly due to continuous further developments.



The information contained in this document may alter at any time without prior notice. No part of this document may be copied or otherwise duplicated without prior written consent. All rights reserved. WilTec Wildanger Technik GmbH cannot be held liable for any possible mistakes in this operating manual, nor in the diagrams and illustrations shown.

Although WilTec Wildanger Technik GmbH has made every possible effort to ensure that this operating manual is complete, accurate, and up-to-date, errors cannot be ruled out entirely.

If you have found an error or wish to suggest an improvement, we look forward to hearing from you. Send us an e-mail to:

service@wiltec.info

or use our contact form:

<https://www.wiltec.de/contacts/>

The most recent version of this manual in several languages can be found in our online shop:

<https://www.wiltec.de/docsearch>

Our postal address is:

WilTec Wildanger Technik GmbH
Königsbenden 12
52249 Eschweiler Germany

To return your goods for exchange, repair, or other purposes, please use the following address. Attention! To allow for a trouble-free complaint or return, it is important to contact our customer service team before returning your goods.

Retourenabteilung
WilTec Wildanger Technik GmbH
Königsbenden 28
52249 Eschweiler Germany

E-mail: **service@wiltec.info**
Tel: +49 2403 55592-0
Fax: +49 2403 55592-15



Introduction

Thank you for choosing to purchase this quality product. To minimise the risk of injury, we ask you to always take some basic safety precautions when using this product. Please read this operating manual carefully and make sure that you understand it. Keep these operation instructions in a safe place.

Safety instructions

- The maximum weight capacity is 270 kg (600 lbs) (based on evenly distributed load on 2 axes). Never exceed the rated maximum capacity.
- Never exceed the rated maximum height limit.
- Always use caution when loading and unloading.
- Only load and unload onto a stable, solid surface.
- Make sure that no unauthorised persons are standing or vehicles moving within the load range.
- **Risk of injuries!**
- Do not leave mounted ramps unattended.
- Keep an eye on folding devices and folding components. **Risk of injuries caused by contusion!**
- Any wet ramp is slippery. **Slip danger!**
- Fold and secure the ramp before transporting it.
- The ramp is not a toy. Only use the ramp according to the intended use defined in this manual. It is neither intended nor suitable as trampoline, scaffold, bridge, ladder, etc.
- Always make sure that the edge of the ramp rests securely and cannot slip. Use the screws included to fix the ramp.
- Always respect the notes and information of the manufacturer of your (electric) wheelchair when using the ramp.

Operating instructions

Loading a wheelchair

- Place the wheelchair in the direction of the ramp with front wheel forward. Roll or ride the wheelchair slowly and steadily up the ramp. Ensure that the wheels follow the centre of the ramp.
- Take extra care in wet conditions to ensure the wheels do not slide on the ramp.

Unloading a wheelchair

- Place the wheelchair in the direction of the ramp with rear wheel forward. Allow the wheelchair to slowly roll backwards down the ramp.
- Always have a qualified assistant present when using the ramp.

Maintenance

- It is the user's responsibility to check the loading ramp and its components before each use. If the ramp is damaged, it should not be used.
- Regularly clean the ramp. Periodically lubricate the hinges.

Important Note:

Reproduction and any commercial use (of parts) of this operating manual, requires a written permission of WilTec Wildanger Technik GmbH.