

User's manual

Tyre Mounting Tool

30156



Illustration similar, may vary depending on model

Please read and follow the operating instructions and safety information prior to initial operation.

Technical changes reserved!

Illustrations, functional steps, and technical data may deviate insignificantly due to continuous further developments.



The information contained in this document may alter at any time without prior notice. No part of this document may be copied or otherwise duplicated without prior written consent. All rights reserved. WilTec Wildanger Technik GmbH cannot be held liable for any possible mistakes in this operating manual, nor in the diagrams and illustrations shown.

Although WilTec Wildanger Technik GmbH has made every possible effort to ensure that this operating manual is complete, accurate, and up-to-date, errors cannot be ruled out entirely.

If you have found an error or wish to suggest an improvement, we look forward to hearing from you.

Send us an e-mail to:

service@wiltec.info

or use our contact form:

<https://www.wiltec.de/contacts/>

The most recent version of this manual in several languages can be found in our online shop:

<https://www.wiltec.de/docsearch>

Our postal address is:

WilTec Wildanger Technik GmbH
Königsbenden 12
52249 Eschweiler Germany

To return your goods for exchange, repair, or other purposes, please use the following address. Attention! To allow for a trouble-free complaint or return, it is important to contact our customer service team before returning your goods.

Retourenabteilung
WilTec Wildanger Technik GmbH
Königsbenden 28
52249 Eschweiler Germany

E-mail: **service@wiltec.info**

Tel: +49 2403 55592-0

Fax: +49 2403 55592-15



Introduction

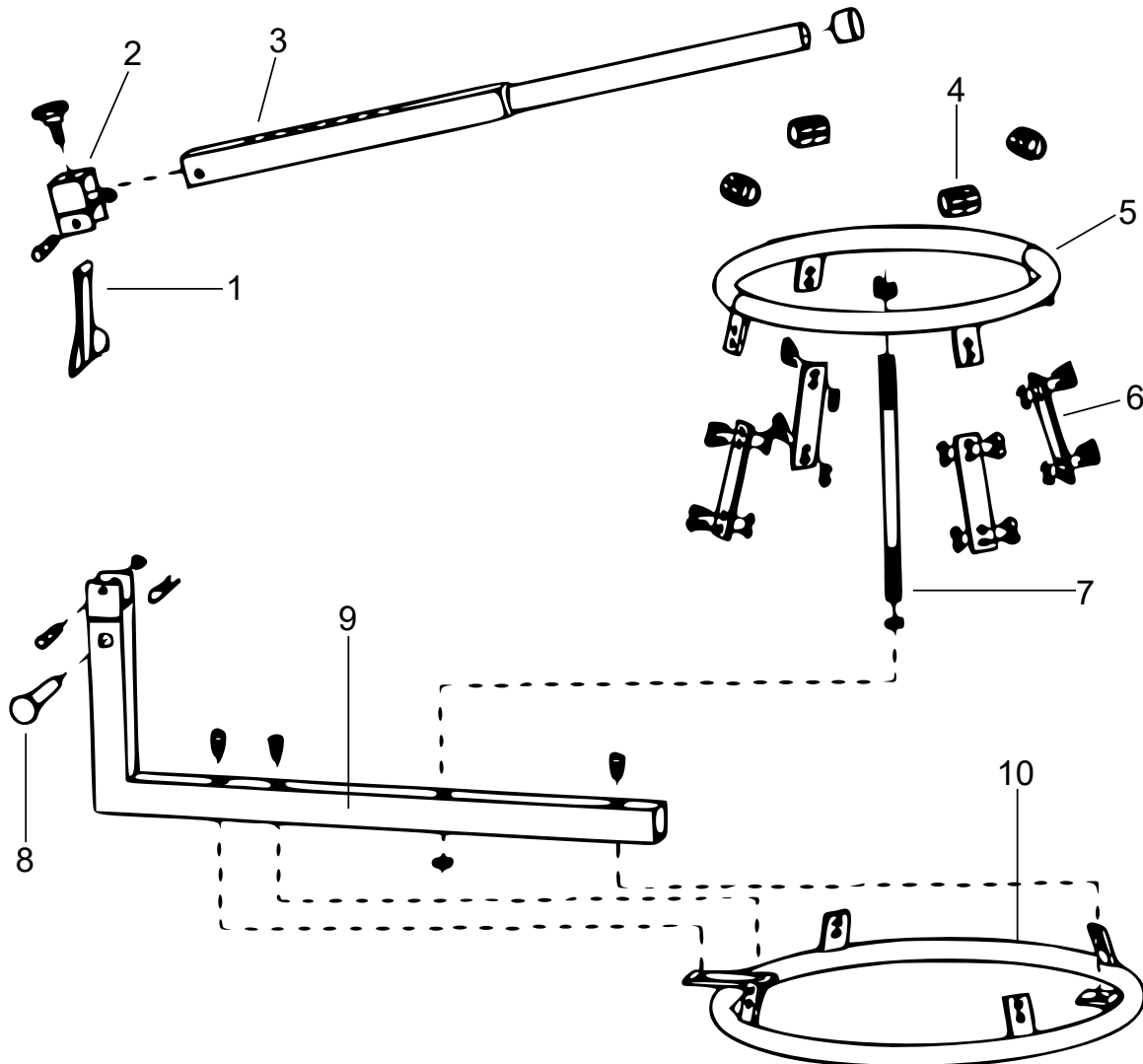
Thank you for choosing to purchase this quality product. To minimise the risk of injury, we ask you to always take some basic safety precautions when using this product. Please read this operating manual carefully and make sure that you understand it.

Keep these operation instructions in a safe place.

Safety instructions

- Read all safety instructions making sure that you understand them before using this device. Non-compliance with any of the following instructions might lead to serious injuries. Keep this instruction manual!
- Keep your working area clean, tidy, and well illuminated. Untidy and dark working areas invite accidents. Keep bystanders and children away when using tools and devices. Distractions may lead to loss of control of the device. If required, keep barriers or shields ready.
- Ensure that the tyre changer is placed on an even and solid surface, which can hold the weight of the device including the tyre and other equipment used.
- Do not let children or other unauthorised people operate the tyre mounting tool or play with it.
- Do not operate the tyre mounting tool with force. The device will work better and more safely if operated with the speed and capacity that it has been designed for.
- Read and follow all safety notes and instructions found in the tyre and vehicle manufacturer's manuals before operating the tyre changer.
- Use the tool that matches the respective job to do. Do not try to use a smaller tool to carry out the work of a bigger industrial tool. This tool has been designed for specific purposes. Do not modify this device in any way and do not use it for anything else than its intended purpose.
- Always be careful. Pay attention to what you are doing and be cautious when using tools and devices. Do not use any tool or device if you are under the influence of alcohol, drugs, or medicine. Even a short moment of inattention when handling a tool or device can lead to serious injury.
- Wear appropriate clothing. Do not wear loose clothing or jewellery. Securely tie long hair together.
- Do not stoop down too far. Ensure a safe stand and keep your balance. A secure footing and balance allow better control of the device if anything unforeseen happens.
- Use protective equipment. Wear protective glasses and a full-face protection when assembling or operating the device.
- Check the tyre mounting tool before every use. Check it for loose screws, misalignment, or jammed moving parts, etc. Also check it for parts torn or broken and unusual noises or vibrations. Have any problems checked and, if necessary, repaired before operating the device again. Do not use damaged tools and devices.

Exploded view and parts list



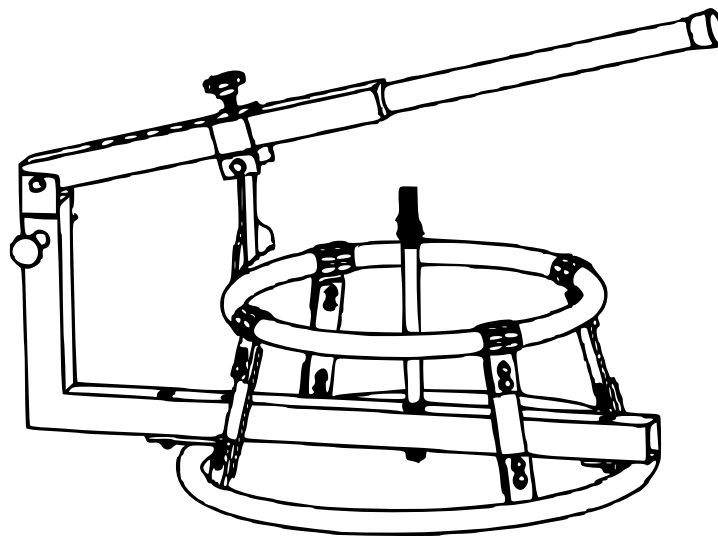
Nº	Name	Nº	Name
1	Bead breaker spade	6	Support ring staff
2	Bead breaker arm support with axle pin	7	Axle stand
3	Bead breaker arm	8	Lever support pin
4	Rim protection	9	Support bar
5	Upper support ring	10	Lower support ring

Screwing material

Name	Qty.	Name	Qty.
Screws (M6)	16	Screws (M8×60)	2
Nuts (M6)	16	Axle stand nuts (M14)	2
Washers (M6)	16	Hexagon socket screws (M10)	3
Locking nuts (M8)	2		

Assembly

1. Insert M6 screws and nuts with washers on either end of the 4 support ring staffs (6). Then connect the lower support ring (10) and the upper support ring (5) with the help of the support ring staffs (6).
2. Now attach the support bar (9) to the lower support ring (10) with 3 M10 hexagon socket screws.
3. Fix the axle stand (7) on either side of the support bar (9) using 2 nuts.
4. Then attach the bead breaker spade (1) to the bead breaker arm support (2) and fix both to the bead breaker arm (3). Then you can adjust the bead breaker spade (1) exactly to the size of the wheel that you will work on.
5. Now attach the bead breaker arm assembly (1, 2, 3, 8) to the support bar (9).
6. Finish the assembly by fixing the rim protection pieces (4) to the upper ring as shown.



Technical specifications

Dimensions (mm)	675 × 500 × 370
Weight (kg)	7.5
Rim widths (mm)	431.8 (17") / 457.2 (18") / 482.6 (19") / 533.4 (21")
Min. axle diameter (mm)	15
Max. hub width (mm)	approx. 10
Support ring diameter (cm)	40
Weight (kg)	8.5

Important Note:

Reproduction and any commercial use (of parts) of this operating manual, requires a written permission of WilTec Wildanger Technik GmbH.