

User's manual

Chain Breaking and Riveting Tool

30206



Illustration similar, may vary depending on model

Please read and follow the operating instructions and safety information prior to initial operation.

Technical changes reserved!

Illustrations, functional steps, and technical data may deviate insignificantly due to continuous further developments.



The information contained in this document may alter at any time without prior notice. No part of this document may be copied or otherwise duplicated without prior written consent. All rights reserved. WilTec Wildanger Technik GmbH cannot be held liable for any possible mistakes in this operating manual, nor in the diagrams and illustrations shown.

Although WilTec Wildanger Technik GmbH has made every possible effort to ensure that this operating manual is complete, accurate, and up-to-date, errors cannot be ruled out entirely.

If you have found an error or wish to suggest an improvement, we look forward to hearing from you.

Send us an e-mail to:

service@wiltec.info

or use our contact form:

<https://www.wiltec.de/contacts/>

The most recent version of this manual in several languages can be found in our online shop:

<https://www.wiltec.de/docsearch>

Our postal address is:

WilTec Wildanger Technik GmbH
Königsbenden 12
52249 Eschweiler Germany

To return your goods for exchange, repair, or other purposes, please use the following address. Attention! To allow for a trouble-free complaint or return, it is important to contact our customer service team before returning your goods.

Retourenabteilung
WilTec Wildanger Technik GmbH
Königsbenden 28
52249 Eschweiler Germany

E-mail: **service@wiltec.info**

Tel: +49 2403 55592-0

Fax: +49 2403 55592-15

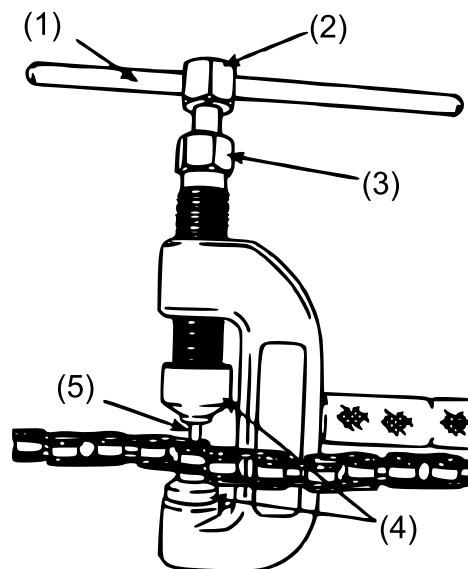
Introduction

Thank you for choosing to purchase this quality product. To minimise the risk of injury, we ask you to always take some basic safety precautions when using this product. Please read this operating manual carefully and make sure that you understand it. Keep these operation instructions in a safe place.

Safety instructions

- **Warning!** Read all safety instructions making sure that you understand them before using this device. Non-compliance with these instructions might lead to serious damages and injuries and void the warranty.
- **Attention!** To avoid injuries, wear certified protective glasses during use.
- To avoid damages to the tool, do not use any electric tool or tube extensions together with this tool. Only tighten by hand.
- To ensure a long service life, clean and lubricate the threads before every use. It might be necessary to grind the riveting head if you wish to use it for 520-chains or larger ones.
- **Warning!** The warnings, information, and instructions of this manual cannot cover all possible conditions and situations. Therefore, thoroughly read the manual, making sure to understand everything comprised therein. Always use to tool and its components with caution and foresight.

Separation of a chain



Nº	Name	Nº	Name
1	Lever	4	Guides
2	Pressure bolt	5	Breaking tip
3	Centre bolt		

1. Start with assembling the tool, screw the centre bolt into the C frame.
2. Choose the breaking tip best suitable for the application.
3. Insert the breaking tip chosen into the spring and slide both into the centre bolt.
4. Turn the threaded pressure bolt into the centre bolt above the tip.
5. Position the tool above the chain, ensuring that the breaking tip is above the chain pin.
6. Tighten the pressure screw by hand, using the slide handle or a 14 mm wrench.
7. Press the chain bolt all out of the chain and through the C-frame hole.



Side pressure plates

1. Screw the threaded screw into the C frame.
2. Mount the pressure plates into the tool. Place the grooved pressure plate into the C-frame hole. Insert the other pressure plate into the centre bolt.
3. Make sure that the alignment of the chain bolts matches the grooves and holes of the pressure plate.
4. Using a 14 mm wrench, tighten the centre bolt until the chain bolt protrudes the front of the pressure plate.

Folding chain links

The pins must protrude enough to allow a clip to be fixed inside the grooves of the chain bolt.

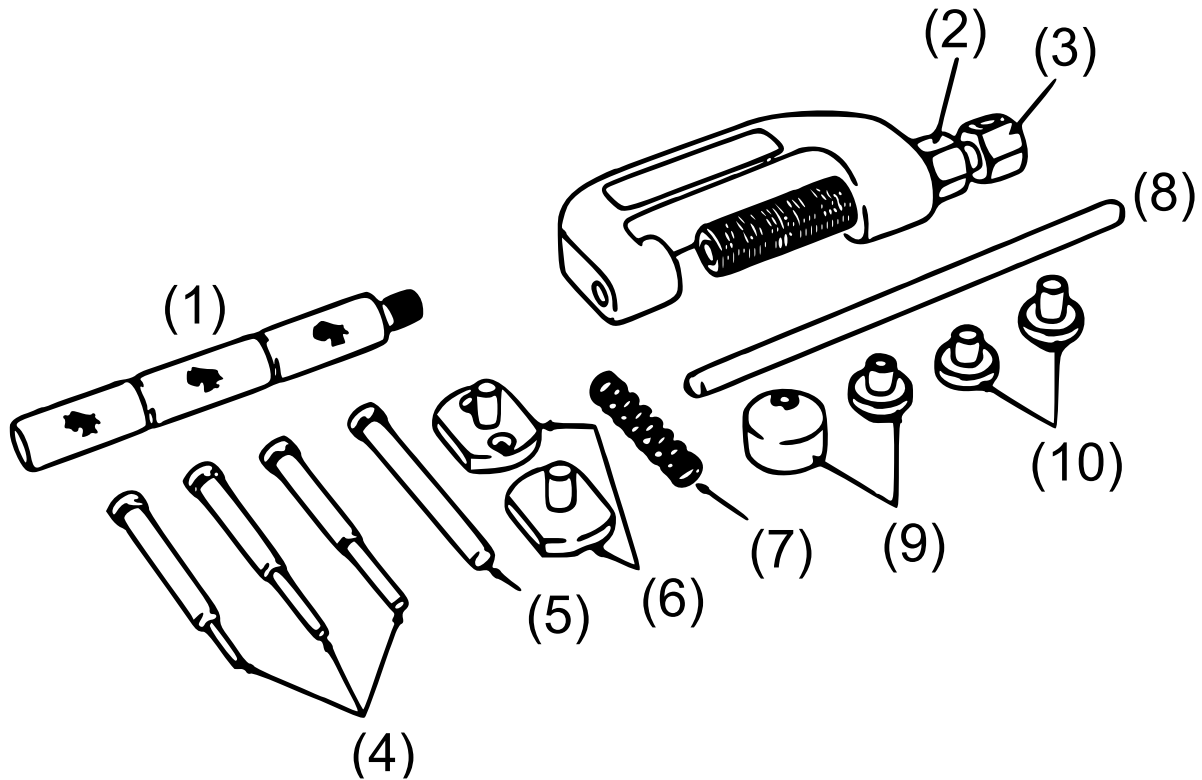
Riveted chain links

- The pins must protrude enough to allow their bending open above the pressure plate.
- Check the chain manufacturer's data to find the suitable protrusion of the chain pins as well as the orientation and mounting of the chain links.

Rivet chain pins

1. Screw the threaded screw into the C frame.
2. Insert the breaking tip chosen into the spring and slide both into the centre bolt. Turn the threaded pressure bolt into the centre bolt above the tip.
3. Insert the anvil into the C-frame hole.
4. Place the tool above the chain bolt to be riveted, with the hollow end of the chain bolt pointing to the riveting tip.
5. **Note:** The small anvil is used for camshaft drive chains up to 3 series.
6. Make sure that the riveting tip is retracted far enough so that the chain-bolt end is exposed.
7. Firmly tighten the threaded screw against the side pressure plates of the chain bolt.
8. Using the lever or a wrench, tighten the pressure screw until the riveting tip spreads the hollow nose of the chain bolt.
9. Remove the tool from the chain. Make sure that both chain bolts have an identical border. Make sure that the riveted side plate is equally aligned with the side plates of the neighbouring chain link.

Exploded view and parts list



Nº	Name	Qty.	Nº	Name	Qty.
1	Handle	1	6	Pressure plate	2
2	Centre bolt	1	7	Spring	1
3	Pressure bolt	1	8	Lever	1
4	Breaking tip	3	9	Guides	2
5	Riveting tip	1	10	Anvil	2

Important Note:

Reproduction and any commercial use (of parts) of this operating manual, requires a written permission of WilTec Wildanger Technik GmbH.