

User's manual

Battery Charger WBL-GZL30

30561



Illustration similar, may vary depending on model

Please read and follow the operating instructions and safety information prior to initial operation.

Technical changes reserved!

Illustrations, functional steps, and technical data may deviate insignificantly due to continuous further developments.



The information contained in this document may alter at any time without prior notice. No part of this document may be copied or otherwise duplicated without prior written consent. All rights reserved. WilTec Wildanger Technik GmbH cannot be held liable for any possible mistakes in this operating manual, nor in the diagrams and illustrations shown.

Although WilTec Wildanger Technik GmbH has made every possible effort to ensure that this operating manual is complete, accurate, and up-to-date, errors cannot be ruled out entirely.

If you have found an error or wish to suggest an improvement, we look forward to hearing from you. Send us an e-mail to:

service@wiltec.info

or use our contact form:

<https://www.wiltec.de/contacts/>

The most recent version of this manual in several languages can be found in our online shop:

<https://www.wiltec.de/docsearch>

Our postal address is:

WilTec Wildanger Technik GmbH
Königsbenden 12
52249 Eschweiler Germany

To return your goods for exchange, repair, or other purposes, please use the following address. Attention! To allow for a trouble-free complaint or return, it is important to contact our customer service team before returning your goods.

Retourenabteilung
WilTec Wildanger Technik GmbH
Königsbenden 28
52249 Eschweiler Germany

E-mail: **service@wiltec.info**
Tel: +49 2403 55592-0
Fax: +49 2403 55592-15




Introduction

Thank you for choosing to purchase this quality product. To minimise the risk of injury, we ask you to always take some basic safety precautions when using this product. Please read this operating manual carefully and make sure that you understand it.

Keep these operation instructions in a safe place.

Safety instructions

- Always use an earthed power supply with the correct voltage (see nameplate). If there are doubts concerning the earthing of the power supply, contact a qualified person for checking it.
- Never use a damaged power cable.
- It is advisable to disconnect the power supply at the electrical socket and not at the extension cable if one is used.
- All persons operating and servicing this device must familiarise with the user's manual and be informed about the potential risks. Children are not allowed to use the battery charger. Note the rules and regulations for safety and health at work and the prevention of accidents.
- The battery charger must be supplied and protected via a residual current circuit breaker with a tripping residual current of no more than 30 mA.
- Do not use the device when being tired or under the influence of alcohol, drugs, or medicine.
-  **Caution!** Battery acid is corrosive! Acid splashes on your skin or clothing should be immediately rinsed with soap water. Wear protective glasses while charging the battery. Acid splashes got into the eyes must immediately be rinsed with water. For your safety consult an eye doctor. Do not wear clothing made from synthetic materials when using the battery charger. This could be damaged by battery-acid splashes.
- Note the battery manufacturer's specifications. Only load rechargeable batteries, but never faulty or recently filled batteries.
- In case of a short circuit by the charging terminals or incorrect polarity, the glass fuse is activated. Replace a defective fuse with a new one having the same Ampere value. Ensure a constant mains voltage. With deep-discharged battery with large capacity, the overload protection might be activated at the upper charging stages, especially at excessive mains voltage. In this case, first charge the battery with a lower current stage shortly until the overload protection lasts.
- If the battery is not used, carry out a conservation charging every 4 weeks or discharge and charge the battery every 3 weeks. Maintenance-free batteries must not be charged without supervision.
- Do not operate the battery charger in a damp or wet zone; do not operate it when you are wet yourself. Protect it from direct sunlight. Do not use the device near flammable liquids or gases.
- Install the device in a safe place so that nobody can walk on the cables, fall over them, and/or damage them. Make for sufficient cooling by ambient air and avoid any heat build-up.
- Before cleaning the device, pull out the plug and only use a damp cloth for cleaning. Avoid using cleaning agents and make sure that liquids cannot enter the device.
- The inner parts of the device do not contain components requiring maintenance by the user. Leave all maintenance, control, and repair works to a qualified person. Keep these operation instructions in a safe place.

Notes

- Before connecting the battery charger, check the charging level and capacity of the battery to be charged.
- Familiarise yourself with all operating elements of the battery charger before commissioning.
- Open the test slots of the battery. The battery acid should be filled at least 1 cm over the lead plates.

- **Attention!** The test slots of the batteries must be opened during charging. **Explosion hazard!**
- Only fill in the battery with distilled water after charging.

Operating principle

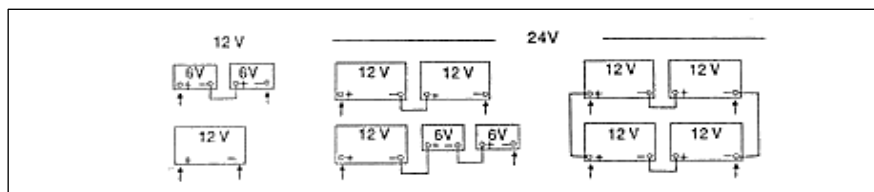
- The device is a fully automatic battery charger for 12-V or 24-V batteries and supplied with 230 V, 50 Hz mains voltage.
- Only use the device for charging batteries. Never operate other consumer loads with this battery charger.

Charging time

The charging time depends on the battery. Rule of thumb:

$$\text{charging time} = \text{battery capacity} \div \text{charging current}$$

During the charging process, the charging current continues to drop, so that the calculated charging time increases by at least ¼. The battery charger can also charge more batteries at the same time – in this case, the charging process will take more time, of course.



Operating the battery charger WBL-GZL30

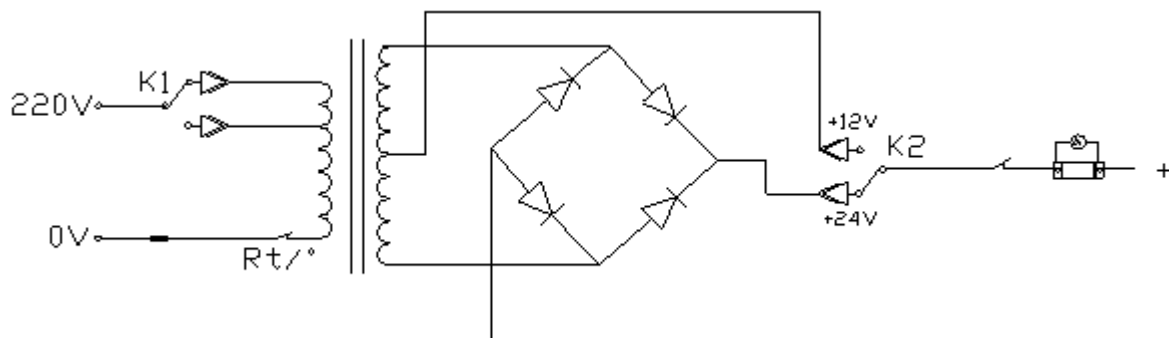
1. You may commission the battery charger only after carefully having read the instructions.
2. Place the battery charger and battery in a dry and well-ventilated place.
3. Check if the battery charger is switched to the off position and the mains voltage is switched off.
4. Connect the battery plus cable (+) of the battery charger to the battery-plus connection.
5. Connect the battery minus cable (-) of the battery charger to the battery-minus connection.
6. Make sure that the connection between the battery and battery charger is stable to ensure a proper function of the battery charger.
7. Check the correctness of the charging voltage stage **(2)** and charging setting **(4)**.
8. Now pull the battery charger in to start the charging process.
9. The battery charger records all signals to calculate the necessary charging voltage.
10. Depending on the condition of the battery, it starts charging with a max. or min. charging current.
 - If the battery is empty, the charger starts charging the battery with max. current voltage.
 - With deep-discharged battery with large capacity, the overload protection might be activated at the upper charging stages, especially at excessive mains voltage. In this case, first charge the battery with a lower current stage (min.) shortly until the overload protection lasts.
 - As soon as the max. current voltage (high charging stage) is reached, the device switches over
 - automatically to the compensating voltage phase.
11. After a successful charging, turn the device off.
12. First remove the battery minus-cable, then the battery plus-cable.
13. If necessary, fill in the battery with distilled water.

Control panel



No	Name
1	Handle
2	12-volts / 24-volts switch
3	Input fuse (AC)
4	Switch min. charging current/max. charging current
5	Overheating protection fuse
6	Amperemeter/charging indicator

Circuit diagram





Troubleshooting

Go through the table before contacting an expert.

Problem	Possible cause	Proposed solution
Battery charger does not work	Faulty input fuse	Replace faulty fuse.
	Fluctuating mains voltage	Check mains connection.
Battery not fully charged	Bad battery connection	Check battery terminals.
	Too large battery capacity	Connect battery with smaller capacity or use larger battery charger.
	Faulty output fuse	Replace faulty fuse.
	Faulty battery	Do not charge faulty battery.

Technical specifications

Power supply	230 V / 50 Hz
Power consumption (W)	490
Current consumption (A)	16 (max.; with 12 V) / 14 (max.; with 24 V)
Electric charge of battery (Ah)	min. 30–max. 200 (lead-acid battery)
Size (mm)	265 × 210 × 200
Weight (kg)	6.3
Protection class	IP21

Regulations for waste disposal

The Waste Electrical and Electronic Equipment Directive (WEEE Directive, 2012/19/EU) of the EU was implemented in the German law related to electrical and electronic equipment and appliances.

All WilTec electric devices that fall under the WEEE directive are labelled with the symbol of a crossed-out wheeled rubbish bin. This symbol indicates that this electric device must not be disposed of with the domestic waste.

WilTec Technik GmbH is registered with the German registration authority EAR (Stiftung Elektro-Altgeräte Register) under the WEEE-registration number DE45283704.

Disposal of used electrical and electronic devices (intended for use in the countries of the European Union and other European countries with a separate waste collection system for these devices).

The symbol on the packaging or the product itself indicates that this product must not be treated as normal domestic waste but must be disposed of at a recycling collection station for electrical and electronic waste.

By disposing of this product correctly, you contribute to the protection of the environment and the health of your fellow people. Inappropriate disposal threatens the environment and health.



Material recycling helps to reduce the consumption of raw materials.

Additional information about the recycling of this product can be provided by your local commune, the municipal waste disposal facilities, or the store where you purchased the product.

Address:
WilTec Wildanger Technik GmbH
Königsbenden 12 / 28
52249 Eschweiler Germany

Important Note:

Reproduction and any commercial use (of parts) of this operating manual, requires a written permission of WilTec Wildanger Technik GmbH.