

User's manual

HVLP Spray Gun 827A1

34113



Illustration similar, may vary depending on model

Please read and follow the operating instructions and safety information prior to initial operation.

Technical changes reserved!

Illustrations, functional steps, and technical data may deviate insignificantly due to continuous further developments.



The information contained in this document may alter at any time without prior notice. No part of this document may be copied or otherwise duplicated without prior written consent. All rights reserved. WilTec Wildanger Technik GmbH cannot be held liable for any possible mistakes in this operating manual, nor in the diagrams and illustrations shown.

Although WilTec Wildanger Technik GmbH has made every possible effort to ensure that this operating manual is complete, accurate, and up-to-date, errors cannot be ruled out entirely.

If you have found an error or wish to suggest an improvement, we look forward to hearing from you. Send us an e-mail to:

service@wiltec.info

or use our contact form:

<https://www.wiltec.de/contacts/>

The most recent version of this manual in several languages can be found in our online shop:

<https://www.wiltec.de/docsearch>

Our postal address is:

WilTec Wildanger Technik GmbH
Königsbenden 12
52249 Eschweiler Germany

To return your goods for exchange, repair, or other purposes, please use the following address. Attention! To allow for a trouble-free complaint or return, it is important to contact our customer service team before returning your goods.

Retourenabteilung
WilTec Wildanger Technik GmbH
Königsbenden 28
52249 Eschweiler Germany

E-mail: **service@wiltec.info**
Tel: +49 2403 55592-0
Fax: +49 2403 55592-15



Introduction

Thank you for choosing to purchase this quality product. To minimise the risk of injury, we ask you to always take some basic safety precautions when using this product. Please read this operating manual carefully and make sure that you understand it.

Keep these operation instructions in a safe place.

Safety instructions

- Familiarise yourself with the user's manual before using the device. Read it thoroughly and follow all safety and other instructions to avoid damages and injuries.
- Only use the device for its specified purpose. Any incorrect use might lead to injuries and/or damages.
- This device is not suitable for persons (including children) with limited physical, sensory, or mental abilities, lack of experience or knowledge, unless they have been instructed and are supervised by an experience person responsible for their safety and familiar with the device.
- Children must not use the device and should be supervised when they are near it to ensure that they do not play with it.
- Under no circumstances should you direct the device towards your body or other persons' bodies or animals.
- The maximum capacity must never be exceeded.
- Before any use, check all connections and hoses for proper condition.
- Should the device or hose be damaged, the device must not be used. **Risk of injuries!**
- Only operate the device in well-ventilated areas.
- Wear appropriate protective equipment (safety glasses, protective gloves, respiratory mask) when operating the device.
- Do not use the device near possible sources of ignition (e.g., cigarettes, open flames, etc.). Paints, thinners, and dissolvents, being highly flammable, must be handled with uttermost care. Obey the warnings and safety instructions given by the manufacturer of the paint, thinner, or dissolvent.
- Clean the device after every use.
- Only have the device repaired by a qualified person.

Before using the product

- Make sure to have received all components of the device and all accessory parts and check them for damages immediately after unpacking them.
- To achieve a regular and clean spray pattern, the surfaces to work on must be clean, dry, free from dust, and free from rust.

Use

1. Connect the gun to a compressed-air connection. Make sure that the air pressure suits the material to be worked on.
2. Thin the paint in accordance with the manufacturer's instructions and fill the paint into the paint cup. Then close the paint cup properly.
3. Take the gun. Make sure that the compressed-air hoses are not kinked or otherwise blocked.
4. By pressing the trigger, the air will begin to flow. Slowly pull the trigger backwards to achieve atomising of the paint.
5. The spray pattern depends on the distance between the spray nozzle and surface.
 - Slow movements are recommended for small amounts of paint, fast movements for large amounts of paint.
 - Do not spray arc-shaped patterns and do not pause spraying, as otherwise the paint will not be spread regularly.
 - To apply fine lines, remove the needle cover and bring the gun close to the surface.



- Make sure that the distance between the gun and surface stays constant.
6. Switch off the compressed-air supply and let the pressure off as soon as you do not use the gun any longer.
 7. Empty the paint cup after work. Drain the paint rests into an appropriate container and dispose of it properly.

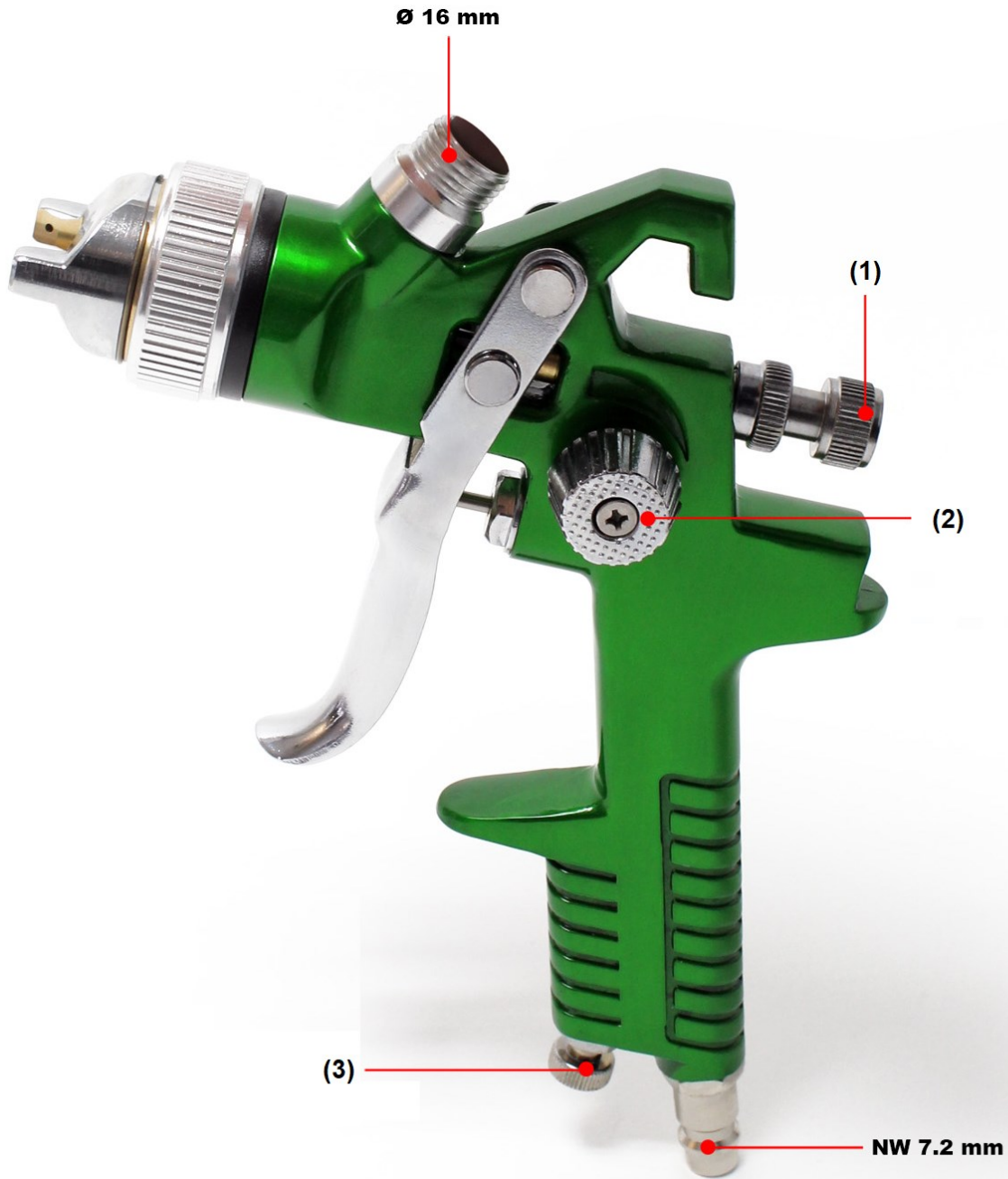
Cleaning and maintenance

- Empty the paint cup and clean it out with water or dissolvent.
- Fill water or dissolvent into the pain cup, then keep the needle holder shut by hand and spray. Thus, the air will flow backwards into the nozzle, removing all paint rests.
- It is advisable to spray again without keeping the needle holder shut to allow fresh dissolvent to come into the paint conduct; then re-wash the dissolvent by keeping the needle cover shut by hand. Repeat this several times if necessary.
- Clean all components thoroughly to avoid any deposit.

Technical specifications

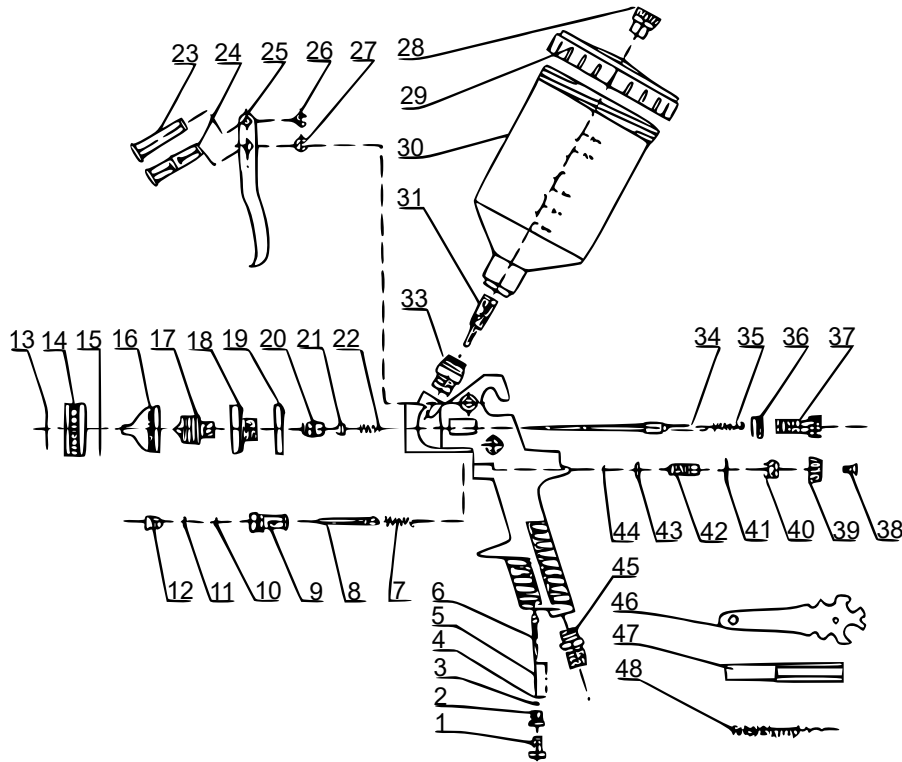
Nozzle diameter (mm)	1.4
Paint cup capacity (ml)	600
Jet width (mm)	280
Working pressure (bar)	2.5-3.5
Weight (kg)	0.7

Controls



Nº	Name	Nº	Name
1	Material control	3	Pressure regulation
2	Round beam/fan-shaped beam regulation		

Exploded view and parts list



Nº	Name	Nº	Name	Nº	Name
1	Air adjustment screw	17	Liquid nozzle	33	Fluid inlet joint
2	Air control knob	18	Fluid nozzle joint	34	Fluid adjustment needle
3	O-ring	19	Joint washer	35	Fluid needle spring
4	Washer	20	Direction screw	36	Gasket
5	Air valve spring	21	Paint needle washer	37	Fluid adjustment knob
6	Air inlet valve	22	Locking spring	38	Cross bolt
7	Switch spring	23	Trigger lever I	39	Pattern adjustment
8	Air valve body	24	Trigger lever II	40	Pattern control knob
9	Switch knob	25	Trigger	41	Washer
10	O-ring	26	Snap retainer	42	Pattern adjusting screw
11	Pliable washer	27	Snap retainer	43	O-ring
12	Direction screw	28	Ventilator plug	44	Snap retainer
13	Spring	29	Cup cover	45	Air inlet joint
14	Nut	30	Cup	46	Tool wrench
15	Fluid cap washer	31	Filter	47	Hexagon wrench
16	Atomisation	32	—	48	Brush

Important Note: Reproduction and any commercial use (of parts) of this operating manual, requires a written permission of WilTec Wildanger Technik GmbH.