

User's manual

Mini Sand Blasting Gun

34178



Illustration similar, may vary depending on model

Please read and follow the operating instructions and safety information prior to initial operation.

Technical changes reserved!

Illustrations, functional steps, and technical data may deviate insignificantly due to continuous further developments.



The information contained in this document may alter at any time without prior notice. No part of this document may be copied or otherwise duplicated without prior written consent. All rights reserved. WilTec Wildanger Technik GmbH cannot be held liable for any possible mistakes in this operating manual, nor in the diagrams and illustrations shown.

Although WilTec Wildanger Technik GmbH has made every possible effort to ensure that this operating manual is complete, accurate, and up-to-date, errors cannot be ruled out entirely.

If you have found an error or wish to suggest an improvement, we look forward to hearing from you. Send us an e-mail to:

service@wiltec.info

or use our contact form:

<https://www.wiltec.de/contacts/>

The most recent version of this manual in several languages can be found in our online shop:

<https://www.wiltec.de/docsearch>

Our postal address is:

WilTec Wildanger Technik GmbH
Königsbenden 12
52249 Eschweiler Germany

To return your goods for exchange, repair, or other purposes, please use the following address. Attention! To allow for a trouble-free complaint or return, it is important to contact our customer service team before returning your goods.

Retourenabteilung
WilTec Wildanger Technik GmbH
Königsbenden 28
52249 Eschweiler Germany

E-mail: **service@wiltec.info**
Tel: +49 2403 55592-0
Fax: +49 2403 55592-15



Introduction

Thank you for choosing to purchase this quality product. To minimise the risk of injury, we ask you to always take some basic safety precautions when using this product. Please read this operating manual carefully and make sure that you understand it. Keep these operation instructions in a safe place.

Safety instructions

CAUTION!

- The device is not intended for use by persons (including children) with impaired or limited physical, sensory, and mental abilities or lack of experience and/or real knowledge, unless they are supervised by a person responsible for their safety or follow the instructions made by this person on how to correctly use the device.
- Children should be supervised to ensure that they do not play with the device.

ATTENTION!

- Perform a visual inspection of the device before every use. Do not use the device if the safety appliances are damaged or worn out. Never override safety regulations.
- Only use the device accordingly to the intended purpose stated in this manual.
- You are responsible for the safety of the working zone.
- Never spray food or chemicals with this gun.
- Never use a wire or another solid object to clean the nozzle or needle; this would damage them.
- Never plunge the entire gun into dissolvents such as thinners; this might damage the air cap, paint nozzle, or needle.

NOTES:

- Choose the right compressor with the appropriate air volume and air pressure to match the actual work requirements.
- Always wear protective goggles. Never point the air-material flow towards yourself, another person, or animal.
- When beginning work, make sure that all screws are tightened.

Use

The mini sand blasting gun “Air Eraser” is a useful tool to eliminate paint defects or engrave a surface. It is used for hobby and professional jobs to clean jewellery and finest parts, to eliminate paint defects, or to engrave glass with pictures or letters. It can be used for lithographic applications to produce nuances and to correct defects without damaging or daubing the surface. It is also quite popular with friends of model railways to give wagons and accessories a worn or weathered look.

Dental technology notes

The device is indispensable for the final processing of gold fillings. By dulling the surfaces of inlays and crowns, small contacts of opposing teeth can be seen without the inconsistencies of interdental materials. The dull surface of a cast shows the imprints of colour or carbon bands with great accuracy. After the correction, the surfaces can be dulled again and the process repeated as often as desired until the desired result.



Use

General remarks

- Use clean, dry compressed air with 2–2.8 bar.
- To achieve a satisfactory performance, water, oil, and other contaminations should be removed from the compressed air by using an appropriate filter.
- After shutting up the abrasive supply, some rests of abrasive will escape together with the air flow, which is due to the air pressure remaining.

Steps

1. Connect the air hose to the filter housing.
2. Screw the lid open.
3. Fill $\frac{3}{4}$ of the cup up with abrasive, then re-screw the lid properly.
4. Do not allow abrasive to get into the thread of the cup to prevent any leaks from forming.
5. Adjust the air pressure to 2 bars for working on paper. For working on metal, gold fillings, plastic, or glass, adjust it to 3.1–4.7 bars.
6. Hold the mini sand blasting gun as you would hold a pencil. Move its tip about 3–12 mm above the workpiece surface. Modify the distance depending on the desired result.
7. Set the adjusting knob to the lowest possible abrasive flow rate to prevent waste.
8. If the work should be done more quickly, use heavy, strongly cutting material and a high air pressure. Approach the tip further towards the workpiece surface to speed up work. Nevertheless, keep a certain minimum distance to allow the abrasive to mix up with air and the stream to widen.

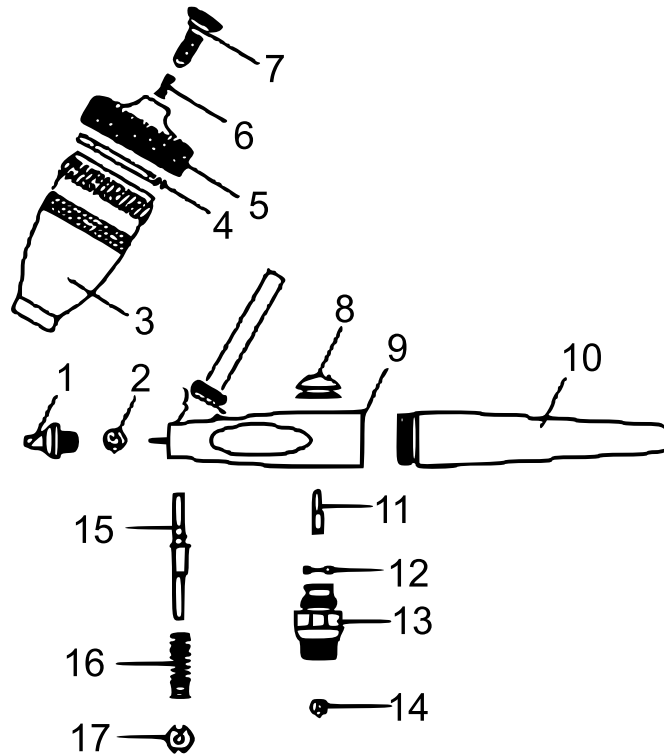
Compressor

To operate the mini sand blasting gun, we recommend the use of a compressor with a minimum air capacity of 20 $\frac{l}{min}$ and a working pressure comprised between 2 bars and a maximum of 4.7 bars.

Technical specifications

Nozzle diameter (mm)	0.5
Paint cup capacity (ml)	15
Max. working pressure (bar)	4.7
Weight (kg)	0.76
Size of gun with cup (mm)	135 × 32 × 87

Exploded view and parts list



Nº	Name	Nº	Name
1	Nozzle	10	Handle
2	O-ring	11	Screw
3	Cup	12	O-ring
4	Gasket	13	Valve body
5	Cup cover	14	O-ring
6	Spring	15	Shaft
7	Screw	16	Spring
8	Operation knob	17	Valve nut
9	Body		

Important Note:

Reproduction and any commercial use (of parts) of this operating manual, requires a written permission of WilTec Wildanger Technik GmbH.