

Instruction manual

Airbrush Compressor AS20W with Vacuum Pump

34202

XPO ^{the} **tool**
experts



Illustration similar, may vary depending on model

Please read and follow the operating instructions and safety information prior to initial operation.

Technical changes reserved!

Illustrations, functional steps, and technical data may deviate insignificantly due to continuous further developments.



The information contained in this document may alter at any time without prior notice. No part of this document may be copied or otherwise duplicated without prior written consent. All rights reserved. WilTec Wildanger Technik GmbH cannot be held liable for any possible mistakes in this operating manual, nor in the diagrams and illustrations shown.

Although WilTec Wildanger Technik GmbH has made every possible effort to ensure that this operating manual is complete, accurate, and up-to-date, errors cannot be ruled out entirely.

If you have found an error or wish to suggest an improvement, we look forward to hearing from you.

Send us an e-mail to:

service@wiltec.info

or use our contact form:

<https://www.wiltec.de/contacts/>

The most recent version of this manual in several languages can be found in our online shop:

<https://www.wiltec.de/docsearch>

Our postal address is:

WilTec Wildanger Technik GmbH
Königsbenden 12
52249 Eschweiler Germany

To return your goods for exchange, repair, or other purposes, please use the following address. Attention! To allow for a trouble-free complaint or return, it is important to contact our customer service team before returning your goods.

Retourenabteilung
WilTec Wildanger Technik GmbH
Königsbenden 28
52249 Eschweiler Germany

E-mail: **service@wiltec.info**

Phone: +49 2403 55592-0

Fax: (+49 2403 55592-15)



Introduction

Thank you for choosing to purchase this quality product. To minimise the risk of injury, we ask you to always take some basic safety precautions when using this product. Please read this operating manual carefully and make sure that you understand it. Keep these operation instructions in a safe place.

Safety instructions

CAUTION:

The use of this device is only allowed with a fault current protection switch with a triggering nominal current up to 30 mA (according to VDE 0100 Article 702 and 738).

The device is not intended for use by persons (including children) with impaired or limited physical, sensory and mental abilities, or lack of experience and/or real knowledge, unless they are supervised by a person responsible for their safety or follow the instructions made by this person on how to correctly use the device. Children should be supervised to ensure that they do not play with the device.

ATTENTION:

- **The compressor head can become very hot.**
- Perform a visual inspection of the device before every use. Do not use the device if the safety appliances are damaged or worn out. Never override safety regulations.
- Only use the device accordingly to the intended purpose stated in this manual.
- You are responsible for the safety of the working zone.
- If the cable or the plug is damaged due to external influences, the cable must not be repaired, but has to be replaced with a new one. This work can only be carried out by an electrician.
- The voltage of 230 V AC indicated on the type plate of the device must match the existent mains voltage.
- Never lift, carry, or fix the device by using the power cable.
- Make sure that the electrical plug connection is protected from flood and moisture.
- Before working on the device (maintaining, repairing, cleaning it), pull out the plug.
- The user is responsible for complying with local safety and mounting regulations. Ask an electrician, if necessary.
- In case of device failure, repairs can only be carried out by an electrician.

NOTE:

- Choose the right compressor with the appropriate air volume and air pressure to match the actual work requirements.
- Never expose the device to dust, acid, steam, explosive or flammable gases, or weather influences (rain, sun, fog, snow).
- The vacuum pump can only be operated in an appropriate environment (good ventilation, ambient temperature +5 °C–+40 °C).
- Never use the compressor barefoot or with wet hands or feet.
- Never allow children to touch the switched-on compressor or to insert the plug. It may cause burns or electric shocks.
- Do not open or damage any part of the compressor. If necessary, please contact your seller.
- Always release the water by opening the drain valve before not using the compressor for a long time. Store the compressor in a well-ventilated place.
- Always wear protective goggles. Under no circumstances should you direct the airflow towards your body or other persons' bodies or animals.
- Never use the device in areas with steam or moisture or close to water.
- Switch off the compressor if you do not use it. Disconnect from mains before you repair, recondition, maintain, clean, or replace parts. Never use the power cable as handle. Keep the power



cable away from hot objects, oil, and sharp edges; protect it against breaking. Do not pull the power cable to unplug the plug from the power socket.

- If the compressor is used outdoors, only approved extensions may be used. Every wire of the extension cable must have at least a 1,5 mm² cross-section.
- Do not store the compressor with the plug plugged in. Do not allow children or any other people not able to handle this device to play or work with it.
- Be very careful when working with the compressor. Do not use it if you are tired. Persons under the influence of alcohol, drugs, or medicine must not use the device. Drowsiness leads to dangerous situations!
- When beginning work, make sure that all screws are tightened.
- Do not use the compressor if it is damaged. If the compressor makes unusual noises and strong vibrations or if other unusual signs occur that indicate some damage, immediately turn off the compressor. For repairs, only use original spare parts. Do not make any technical modifications to the compressor. In case you cannot eliminate the malfunction, hand over the device to an expert for control and repair.

Properties

- Vacuum pump and compressor with two manometers
- Oil free, piston compressor, no polluted air
- Protection against excessive temperature
- Very low noise level

Field of application

- The AS20 W airbrush compressor is e.g., suitable for operating in the following areas:
 - crafts,
 - hobby,
 - modelling,
 - tattoos and body art,
 - make-up and nail design,
 - as a source of air in the field of medicine,
 - in food and chemical industries
 - in laboratories, etc.
- The vacuum pump is well-suited for packaging of compressible goods such as clothing or food or the production of handicrafts and toys. Furthermore, it can be used for applying vacuum to air conditioning systems.



Technical specifications

Type	Piston compressor
Power (W)	150 (0,2 hp)
Rotation speed ($\frac{1}{\text{min}}$)	1450–1700
Flow rate ($\frac{1}{\text{min}}$)	20–23
Pressure range (bar)	0–4
Vacuum range (bar)	approx. 0,79
Weight (kg)	3.7
Size (mm)	255×135×170
Sound level (dB)	approx. 40

Notes

- You may use nozzles from 0,2 to 1,0 mm.
- The compressor has a 9,51 mm ($\frac{1}{8}$ ") outlet (male thread), which can be effortlessly changed to $\frac{1}{4}$ ". The matching adapter is not included in the delivery.
- When the compressor is connected by the hose to the airbrush gun, it can be connected to the mains and switched on.
- The maximum pressure is displayed by the pressure gauge.

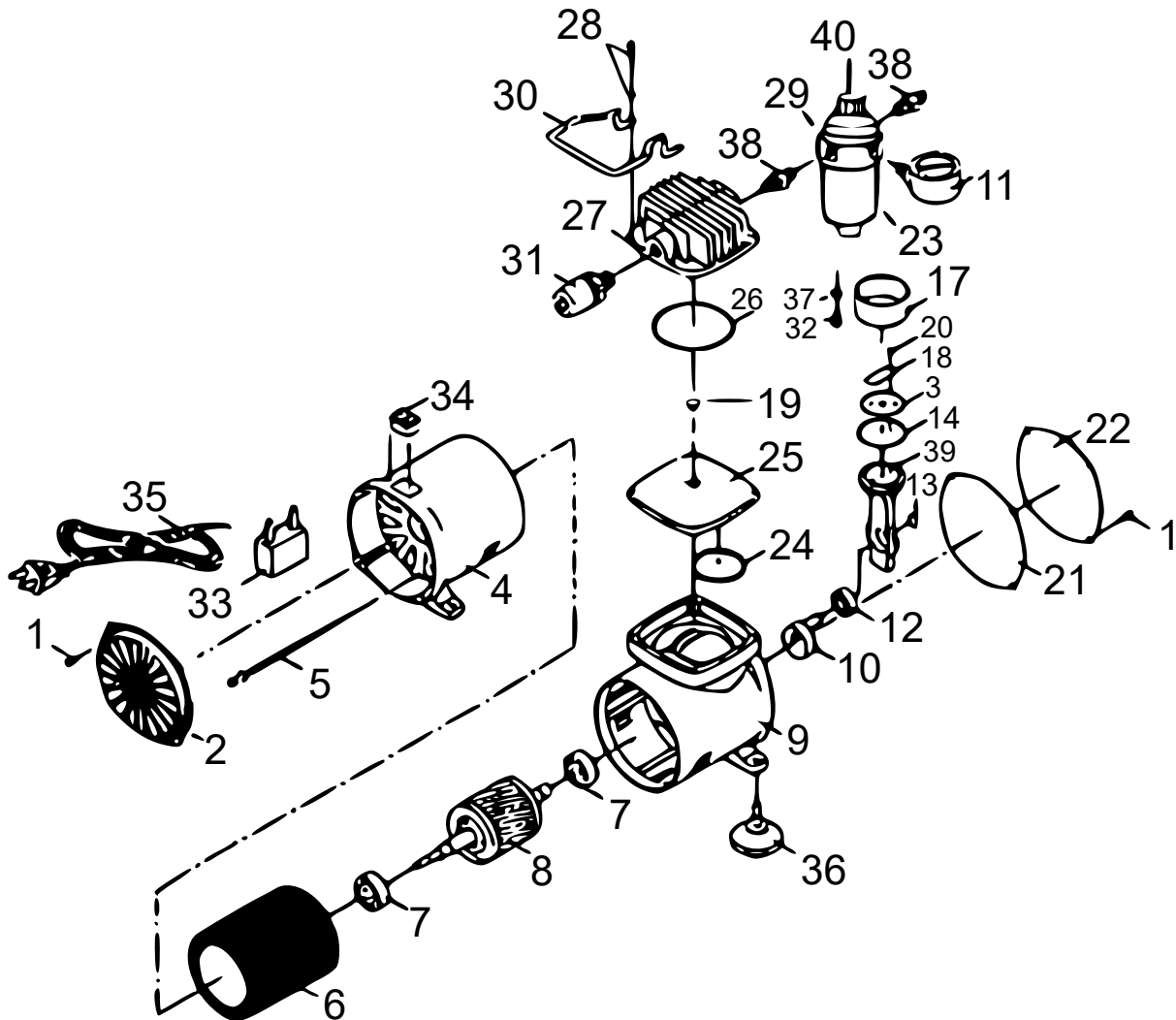
Leakage check

- Switch on the compressor and wait until the maximum pressure has built up and the auto-stop function has been activated.
- If there is no leakage, the pressure gauge should display nearly constantly the same range of pressure.
- A quick decrease of the range of pressure suggests that there is in fact a leakage.
- It is of great importance to seal any leak as soon as possible to avoid any impact on the capacity and efficiency of the compressor.
- A leakage leads to the auto-stop and auto-start constantly being switched on and off.

Difference between maximum pressure and operating pressure

- The maximum pressure is the highest possible pressure that a compressor can generate.
- Once the maximum pressure has been reached, the compressor switches off (auto-stop), and as soon as the pressure starts to decrease, it switches on again (auto-start).
- The maximum pressure is the pressure measured only inside the compressor itself.
- On the outlet of the compressor, there is a lower pressure; the pressure that you actually work with remains. The operating pressure may vary according to the connected airbrush gun.

Exploded view and parts list



Nº	Name	Qty.	Nº	Name	Qty.
1	Screw	8	23	Filter	1
2	Rear cover	1	24	O-ring	1
4	Rear body	1	25	Cylinder block	1
5	Screw	4	26	O-ring	1
6	Stationary motor	1	27	Cylinder head	1
7	Bearing	2	28	Screw cap	4
8	Rotary motor	1	29	Filter valve	1
9	Front body	1	30	Handle	1
10	Counterweight	1	31	Pressure switch	1
11	Pressure gauge	1	32	Water release needle	1
12	Bearing	1	33	Capacitor	1
13	Retainer ring	1	34	On/off switch	1
14	Compression ring	1	35	Wire	1
17	Cylinder	1	36	Rubber pad	4
18	Valve plate	1	37	Hexagon head nut	1
19	Valve	2	38	Connection	2
20	Screw	1	39	Connector ring	1
21	Front gasket	1	40	Pressure controller	1
22	Front cover	1			

Regulations for waste disposal

The Waste Electrical and Electronic Equipment Directive (WEEE Directive, 2012/19/EU) of the EU was implemented in the German law related to electrical and electronic equipment and appliances.

All WilTec electric devices that fall under the WEEE directive are labelled with the symbol of a crossed-out wheeled rubbish bin. This symbol indicates that this electric device must not be disposed of with the domestic waste.

WilTec Technik GmbH is registered with the German registration authority EAR (Stiftung Elektro-Altgeräte Register) under the WEEE-registration number DE45283704.

Disposal of used electrical and electronic devices (intended for use in the countries of the European Union and other European countries with a separate waste collection system for these devices).

The symbol on the packaging or the product itself indicates that this product must not be treated as normal domestic waste but must be disposed of at a recycling collection station for electrical and electronic waste.

By disposing of this product correctly, you contribute to the protection of the environment and the health of your fellow people. Inappropriate disposal threatens the environment and health.



Material recycling helps to reduce the consumption of raw materials.

Additional information about the recycling of this product can be provided by your local commune, the municipal waste disposal facilities, or the store where you purchased the product.

Address:
WilTec Wildanger Technik GmbH
Königsbenden 12 / 28
52249 Eschweiler Germany

Important Note:

Reproduction and any commercial use (of parts) of this operating manual, requires a written permission of WilTec Wildanger Technik GmbH.