

Operation Manual

Airbrush Compressor AF18-2

34203



Illustration similar, may vary depending on model

Read and follow the operating instructions and safety information before using for the first time.

Technical changes reserved!

Due to further developments, illustrations, functioning steps, and technical data can differ insignificantly.

Updating the documentation

If you have suggestions for improvement or have found any irregularities, please contact us.



The information contained in this document may alter at any time without previous notice. It is prohibited to copy or spread any parts of this document in any way without prior written allowance. All rights reserved.

The WilTec Wildanger Technik GmbH cannot be held accountable for any possible mistakes in this operating manual, nor in the diagrams and figures shown.

Even though, the WilTec Wildanger Technik GmbH has undergone biggest possible efforts to ensure that the operating manual is complete, faultless, and up to date, mistakes cannot be entirely avoided.

If you should find a mistake or wish to make a suggestion for improvement, we look forward to hearing from you.

Send an e-mail to:

service@wiltec.info

or use our contact form:

<https://www.wiltec.de/contacts/>

The most recent version of this manual in various languages can be found in our online shop via:

<https://www.wiltec.de/docsearch>

Our postal address is:

WilTec Wildanger Technik GmbH
Königsbenden 12
52249 Eschweiler
Germany

To return orders for exchange, repair, or other purposes, please use the following address. Attention! To allow for a smooth execution of your complaint or return, it is important to contact our customer service team before returning the goods.

Returns Department
WilTec Wildanger Technik GmbH
Königsbenden 28
52249 Eschweiler

E-mail: **service@wiltec.info**

Tel: +49 2403 55592-0

Fax: +49 2403 55592-15



Introduction

Thank you for purchasing this quality product. **To minimise the risk of injury we urge that our clients take some basic safety precautions when using this device. Please read the operation instructions carefully and make sure you have understood its content.**

Keep these operation instructions safe.

Safety instructions

Caution!

- The device may only be used with a residual current circuit breaker with a triggering rated current of up to 30 mA (according to VDE 0100 parts 702 and 738).
- This device may not be used by persons (including children) with limited physical, sensory, or mental capabilities or a lack of experience and/or knowledge, unless a person responsible for their safety supervises them or have instructed them on how to use the device.
- Children should be supervised to ensure that they do not play with the device.

Caution!

- The compressor head (with cooling fins) can become very hot. **Risk of burns!**
- Visually inspect the device before each use. Do not use it if safety devices are damaged or worn. Never override safety devices.
- Only use this device in accordance with the intended use specified in this operation manual.
- You are responsible for the safety in your work area.
- Should the power cord or the plug be damaged due to external influences, the cable must not be repaired, but must be replaced with a new one. This work may only be performed by a qualified electrician.
- The 230 V alternate voltage stated on the nameplate of the device must correspond to the existing mains voltage.
- Never lift, carry, or suspend the device by its power cord.
- Make sure that the electrical plug connections are protected from flood and moisture.
- Pull out the plug before any adjustment or maintenance work.
- The user is responsible for the respect of local safety and installation regulations. Ask an electrician in case of doubts.
- In case of the device failing, repairs must only be carried out by a qualified electrician.

Notes!

- The user should choose the right compressor with the appropriate air volume and pressure that corresponds to the actual work requirements.
- Never expose the device to dust, acids, steam, explosive or flammable gases, or the effects of weather (rain, sun, fog, snow).
- The vacuum pump may only be operated in a suitable environment (well ventilated, ambient temperature +5–+40 °C).
- Never use the compressor barefoot or with wet hands or feet.
- Never allow children to touch the switched-on compressor or plug in the plug. This could result in burns or electric shock.
- Do not open or damage any part of the compressor. If necessary, contact a qualified specialist.
- The water can be drained by opening the drain valve. Always do this before you will not be using the compressor for a long period of time. Store the compressor in a well-ventilated place.
- Always wear protective glasses. Under no circumstances may the air flow be directed at yourself, other people, or animals.
- Never use the compressor in areas with steam, moisture, or near water.
- Turn off the compressor when you are not using it. Unplug it before repairing, overhauling, maintaining, cleaning, or replacing parts. Never use the power cord as a handle. Keep the power



cord away from hot objects, oil, and sharp edges. Protect it from breaking. Do not pull out the power plug by pulling on the power cord.

- If the compressor is used outdoors, only approved extension cables may be used. Each wire in the extension cable must have a cross-section of at least 1.5 mm².
- Do not store the compressor with the plug plugged in. Do not allow children or other persons unable to use this device to play or work with it.
- Be very careful when working with the compressor. Do not use it when you are tired or under the influence of alcohol, drugs, or medicine.
- When starting work, make sure that all screws are firmly tightened.
- Do not use the compressor if it is damaged. If the compressor makes strange noises, strong vibrations, or other unusual signs that indicate damage, immediately stop the compressor. Do not make any structural changes to the compressor. Only have repairs carried out by qualified specialists and with original spare parts.

Properties

- Compressor with pressure reducer, condensate drain, and pressure gauge
- Oil-free, piston compressor, no contaminated air
- With water filter, pressure setting, and pressure gauge
- Overheating protection
- Very low noise level
- Additional fan for better cooling performance and longer service life

Technical specifications

Type	Piston compressor
Power (W)	150 (1/5 hp)
Rotation speed (1/min)	1450–1700
Flow rate (1/min)	20–23
Pressure adjustment range (bar)	0–4
Weight (kg)	4.8
Size (mm)	255×135×170
Suitable nozzle sizes (mm)	0.2–1.0

Hints to the user

- The compressor has a 1/8" outlet (9.51 mm, external thread), which can easily be switched to 1/4". The matching adaptor is not included in the scope of delivery.
- When the compressor is connected to the airbrush gun via the hose, it can be connected to the power supply and switched on.
- The maximum pressure is displayed via the pressure gauge, the operating pressure can be set via the pressure regulator.

Leak checks

- Switch on the compressor and wait until the maximum pressure has built up and the auto-stop function has been activated.
- If there is no leak, the pressure gauge should show the same pressure range almost constantly.
- A rapidly decreasing pressure area indicates an actual leak.



- It is very important to seal a leak as soon as possible to avoid affecting the performance and efficiency of the compressor.
- A leak means that the auto-stop and auto-start functions are activated permanently.

Difference between maximum and service pressure

- The maximum pressure is the highest possible pressure that a compressor can generate.
- As soon as the maximum pressure is reached, the compressor switches off (auto-stop). As soon as the pressure begins to drop, it switches on again (auto-start).
- The maximum pressure is the pressure measured in the compressor itself.
- The pressure at the compressor outlet is lower. The pressure remains that you actually work with. This working pressure can vary depending on the connected airbrush gun.

Operation of pressure regulator with filter



- a) Pressure regulator
- b) Pressure gauge
- c) Water drain plug

Product name: Pressure regulator with filter and pressure gauge
Type: AFR-2000

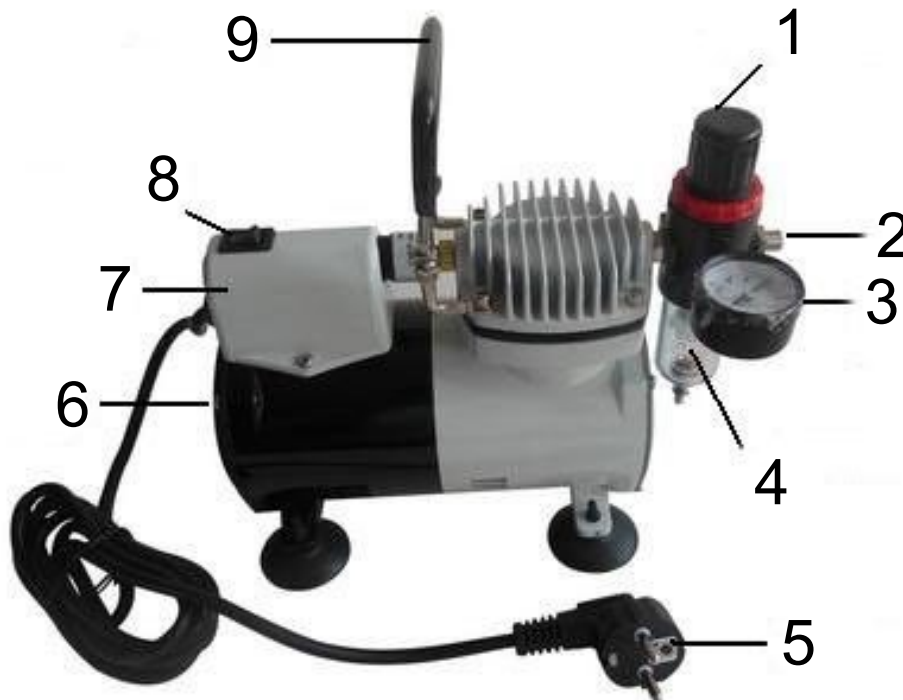
Properties:

The AFR-2000 is an in-line low pressure regulator with 9 bar (100 psi); it includes a pressure gauge and a water drain plug. Thanks to this regulator the user can control the pressure and helps to produce clean, dry, and stable compressed air. The controller may only be used in accordance with the operating instructions.

Operation:

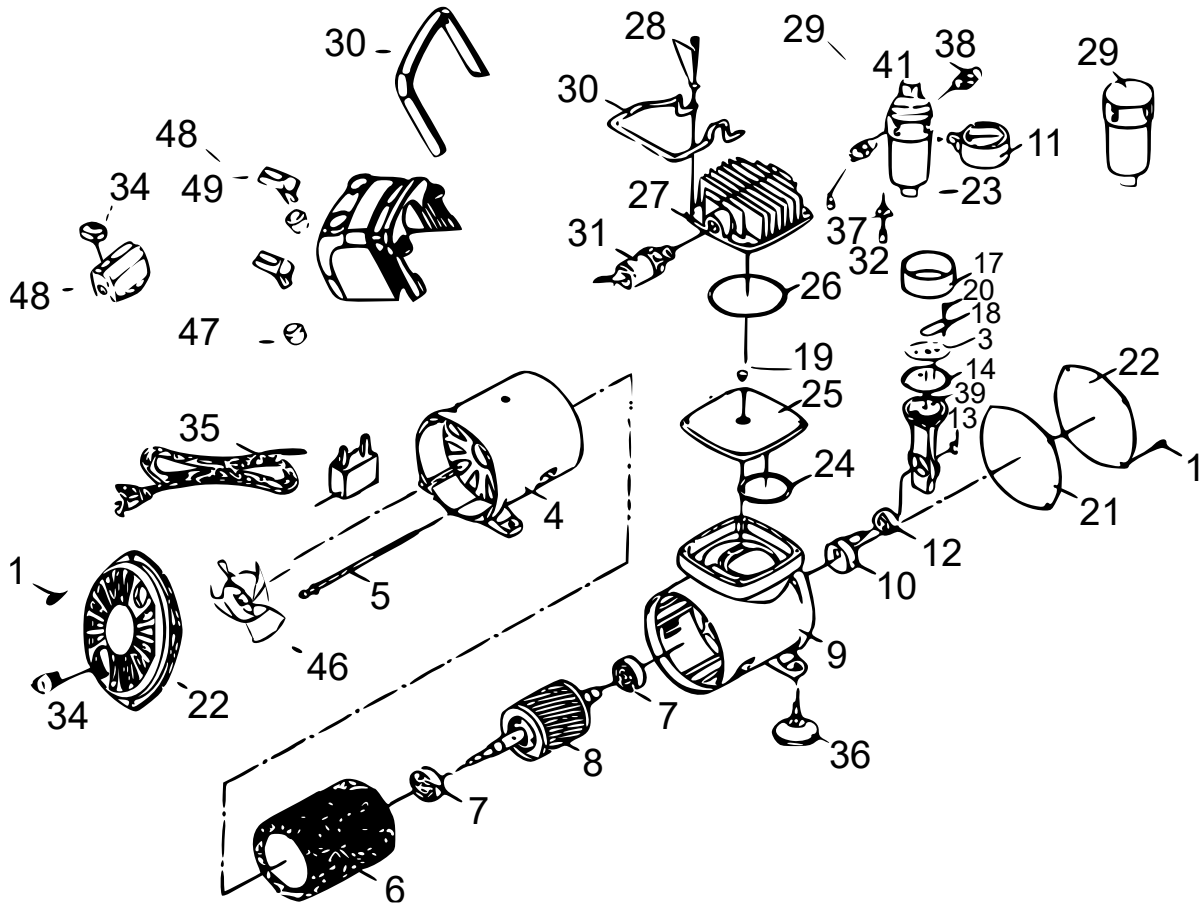
1. The pressure gauge shows the working pressure of the pneumatic tool.
2. Pull the adjustment knob upwards; a clockwise turn increases the pressure; a counter-clockwise turn decreases it.
3. Turn the adjustment knob to have the correct working pressure and snap it back into place.
4. Do not turn the rotary knob against excessive resistance. If necessary, the height and position of the rotary knob can be varied slightly.
5. Use the water drain plug to empty the condensate collector.

Main components



Nº	Name
1	Pressure regulator
2	Connection
3	Pressure gauge
4	Air filter
5	Power plug
6	Fan
7	Cover
8	Power switch
9	Handle

Exploded view and parts list



Nº	Name	Nº	Name	Nº	Name
1	Screw	18	Valve plate	32	Water drain plug
3	Block	19	Valve	33	Capacitor
4	Rear cover	20	Screw	34	Power switch
5	Screw	21	Front gasket	35	Cable
6	Stationary motor	22	Cover	36	Rubber pad
7	Bearing	23	Filter	37	Hexagon nut
8	Rotary motor	24	O-ring	38	Plug
9	Front cover	25	Cylinder block	39	Connection rod
10	Counterweight	26	O-ring	41	Pressure regulator
11	Pressure gauge	27	Cylinder head	46	Fan
12	Bearing	28	Cylinder screw	47	Holder support
13	Retainer ring	29	Filter	48	Cover
14	Compression ring	30	Handle	49	Airbrush holder
17	Cylinder	31	Pressure switch		

Disposal regulations

EU guidelines regarding the disposal of scrap electric appliances (WEEE, 2012/19/EU) were implemented in the law related to electrical and electronic equipment and appliances.

All WiTec electric devices that fall under the WEEE regulations are labelled with the crossed-out wheeled waste bin logo. This logo indicates that this electric equipment must not be disposed with the domestic waste.

The company WiTec Technik GmbH has been registered in the German registry EAR under the WEEE-registration number DE45283704.

Disposal of used electrical and electronic appliances (intended for use in the countries of the European Union and other European countries with a separate collection system for these appliances).

The logo on the article or on its packaging points out that this article must not be treated as normal household waste but must be disposed to a recycling collection point for electronic and electrical waste equipment. By contributing to the correct disposal of this article you protect the environment and the health of your fellow men. Environment and health are threatened by inappropriate disposal.



Material recycling helps reduce the consumption of raw materials.

Additional information on recycling this article can be provided by your local community, municipal waste disposal facilities, or the store where you purchased the article.

Address:
WiTec Wildanger Technik GmbH
Königsbenden 12 / 28
D-52249 Eschweiler

Important notice:

The reprint or reproduction, even of excerpts, and any commercial use, even in part, of this instruction manual require the written permission of WiTec Wildanger Technik GmbH.