

User's manual

Motorcycle Mini-Lift

50797



Illustration similar, may vary depending on model

Please read and follow the operating instructions and safety information prior to initial operation.

Technical changes reserved!

Illustrations, functional steps, and technical data may deviate insignificantly due to continuous further developments.



The information contained in this document may alter at any time without prior notice. No part of this document may be copied or otherwise duplicated without prior written consent. All rights reserved. WilTec Wildanger Technik GmbH cannot be held liable for any possible mistakes in this operating manual, nor in the diagrams and illustrations shown.

Although WilTec Wildanger Technik GmbH has made every possible effort to ensure that this operating manual is complete, accurate, and up-to-date, errors cannot be ruled out entirely.

If you have found an error or wish to suggest an improvement, we look forward to hearing from you.

Send us an e-mail to:

service@wiltec.info

or use our contact form:

<https://www.wiltec.de/contacts/>

The most recent version of this manual in several languages can be found in our online shop:

<https://www.wiltec.de/docsearch>

Our postal address is:

WilTec Wildanger Technik GmbH
Königsbenden 12
52249 Eschweiler Germany

To return your goods for exchange, repair, or other purposes, please use the following address. Attention! To allow for a trouble-free complaint or return, it is important to contact our customer service team before returning your goods.

Retourenabteilung
WilTec Wildanger Technik GmbH
Königsbenden 28
52249 Eschweiler Germany

E-mail: **service@wiltec.info**

Tel: +49 2403 55592-0

Fax: +49 2403 55592-15



Introduction

Thank you for choosing to purchase this quality product. To minimise the risk of injury, we ask you to always take some basic safety precautions when using this product. Please read this operating manual carefully and make sure that you understand it. Keep these operation instructions in a safe place.

Safety instructions

Warning!

When using the motorcycle lift, it is necessary to know the balance point of your motorcycle. Thus, you must ensure first to know it.

Before using the lift, make sure that the motorcycle that you wish to support has a construction et balance point suitable for supporting; thus, you will avoid damages that might occur otherwise. Do not use the lift when it squeezes the exhaust pipe or other fragile components.

- Place the lift in a suitable work area. Keep the work area clean and tidy, remove all foreign matter, and ensure sufficient illumination. Furthermore, make sure that the ground is level and sufficiently stable (prefer concrete) to bear the weight both of the motorcycle and of the lift.
- Keep the lift clean to ensure optimal and safe performance.
- The maximum capacity of the lift is 500 kg; make sure not to exceed this nominal capacity.
- Before lifting, make sure that no obstacle can interfere with the lifting process.
- Keep children and unauthorised persons away from your working area.
- Do not use the lift for a job that it is not designed for.
- Do not use the lift in case it is damaged.
- Do not allow any untrained person to use the lift.
- Do not modify the lift in any way.
- Keep your hands and feet away from the lift while it is moving.
- During operation, wear a suitable protective equipment. Do not wear loose clothing or jewellery that could get caught in moving parts.
- When the platform has reached its operational height, make sure that the safety pin is engaged. This pin prevents the lift from retracting.
- Having finished work, first make sure that there are no objects under the motorcycle or lift before re-lowering the motorcycle. After that, very slowly activate the deblocking valve to lower the lift.
- Before storing the device, make sure that all components are clean, free from fat and oil, and that the lift has been lowered completely.
- Store the lift in a safe place.
- Do not expose the lift to rain or snow.
- Make sure to have read the operational manual of the lift before using it. Bad use of the lift may lead to damages or severe injuries.

Attention! This motorcycle lift is not designed as permanent-lifting ramp.

Technical specifications

Maximum weight (kg)	Adjustable operation height (with supports) (mm)	Contact surface (supports) (mm)	Contact surface (mm)
500	150–480	55×40	450×150



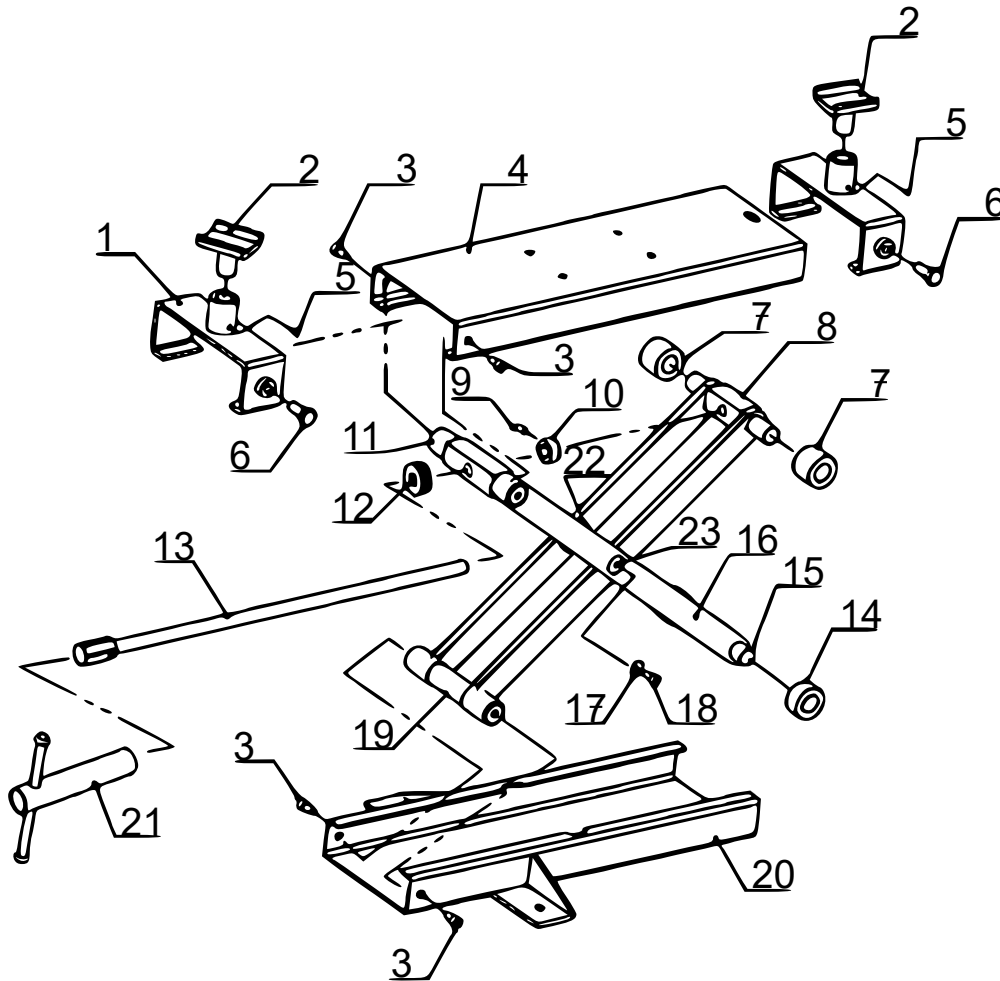
Operation

- Make sure that there is a good access and enough free space beneath the motorcycle for the lift. The lift can also be used together with a motorcycle that has already been raised onto a lifting ramp.
- Make sure that the lift stands in the centre of the ramp and has a safe and stable position. Find suitable contact spots on the underside of the motorcycle; you must also consider the balance point of the motorcycle and the wheel to be raised.
- Place the lift near the spot where you wish it to stand. Turn the hexagon shaft clockwise to raise to lift to a point where the platform touches the underside of the motorcycle. Adapt the position of the lift, if necessary, then continue the lifting process.
- To have additional safety, it is advisable to fix the motorcycle on the lift by using suitable straps; this should mainly be done when the motorcycle has already been raised onto a ramp.
- Once the work is done, make sure that no obstacle underneath the lift will perturb the lowering process.
- After the lift has completely been lowered, make sure that the motorcycle stands on its wheels and is supported in an upright position.

Maintenance

- Store the lift completely lowered.
- When not in use, the lift should be stored in a dry spot of your storeroom that is as low as possible; thus, you will prevent the piston from rusting.
- Keep the lift clean and remove every sign of oil and lubricating grease. Only lubricate moving parts and make sure that no component rusts.
- Before use, re-check all components. With any component being damaged or unusable, the lift may only be re-used after that damage has been repaired.

Exploded view and parts list



Nº	Name	Qty.	Nº	Name	Qty.
1	Saddle	2	13	Bar	1
2	Adjustable plate	2	14	Small rollers	2
3	Inner hex bolt M8×16	4	15	Axle	1
4	Platform	1	16	Lifting connection bar	4
5	Countersunk screw M6×8	2	17	Washer ø8	2
6	Bolt M10×25	2	18	Inner hex bolt M6×12	2
7	Large rollers	2	19	Fix axle	1
8	Lifting shaft	1	20	Base frame	1
9	Countersunk screw M6×12	1	21	Handle	1
10	Adjusting ring	1	22	Washer ø14	2
11	Fix lifting shaft	1	23	Centre shaft	1
12	Bearing	1			

Important Note:

Reproduction and any commercial use (of parts) of this operating manual, requires a written permission of WilTec Wildanger Technik GmbH.