

Operation Manual

Quad/Motorbike Jack Lift

50799



Illustration similar, may vary depending on model

Read and follow the operating instructions and safety information before using for the first time.

Technical changes reserved!

Due to further developments, illustrations, functioning steps, and technical data can differ insignificantly.

Updating the documentation

If you have suggestions for improvement or have found any irregularities, please contact us.



The information contained in this document may alter at any time without previous notice. It is prohibited to copy or spread any parts of this document in any way without prior written allowance. All rights reserved.

The WilTec Wildanger Technik GmbH cannot be held accountable for any possible mistakes in this operating manual, nor in the diagrams and figures shown.

Even though, the WilTec Wildanger Technik GmbH has undergone biggest possible efforts to ensure that the operating manual is complete, faultless, and up to date, mistakes cannot be entirely avoided.

If you should find a mistake or wish to make a suggestion for improvement, we look forward to hearing from you.

Send an e-mail to:

service@wiltec.info

or use our contact form:

<https://www.wiltec.de/contacts/>

The most recent version of this manual in various languages can be found in our online shop via:

<https://www.wiltec.de/docsearch>

Our postal address is:

WilTec Wildanger Technik GmbH
Königsbenden 12
52249 Eschweiler
Germany

To return orders for exchange, repair, or other purposes, please use the following address. Attention! To allow for a smooth execution of your complaint or return, it is important to contact our customer service team before returning the goods.

Returns Department
WilTec Wildanger Technik GmbH
Königsbenden 28
52249 Eschweiler

E-mail: **service@wiltec.info**

Tel: +49 2403 55592-0

Fax: +49 2403 55592-15



Introduction

Thank you for purchasing this quality product. **To minimise the risk of injury we urge that our clients take some basic safety precautions when using this device. Please read the operation instructions carefully and make sure you have understood its content.**

Keep these operation instructions safe.

Safety Instructions/warnings



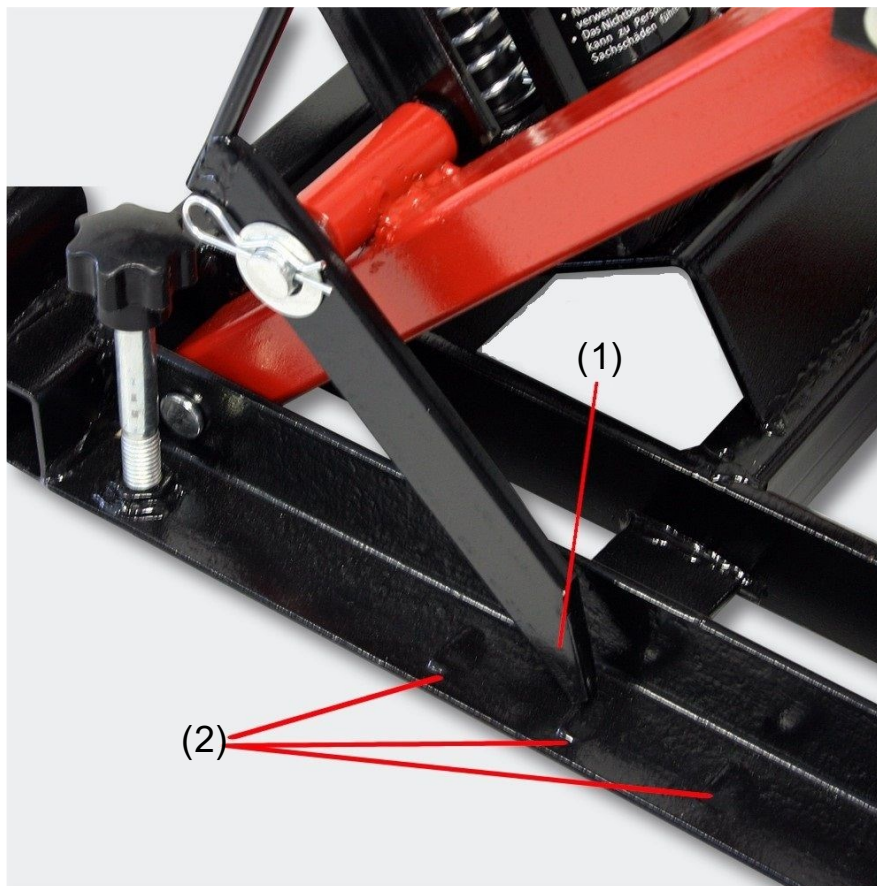
- The user must have read and understood the operation manual before using the device. All warnings need to be understood and complied with. People unfamiliar with the operating manual or according warnings need to be instructed accordingly.
- Keep this manual, all safety notes, and warnings in a secure, dry place, where it is always available.
- Check the device before using it to ensure that it is complete, operational, and tight.
- Never operate a damaged or dysfunctional device. In case of damage, contact the manufacturer or a qualified specialist.
- Keep the device away from humidity or rain.
- The jack lift should always be operated by two people, especially when lifting or lowering vehicles or weights.
- Never leave the engine of the vehicle switched on whilst being lifted.
- Nobody is allowed to sit on/inside the vehicle being lifted.
- The jack lift may only be placed on an even and solid surface which can carry the jack weight including that of the vehicle.
- Do not alter the device in any way.
- Before every use, ensure that all screws and nuts are tightened.
- After transporting the jack lift, the air needs to be expelled from the hydraulic parts.
- When using the device, always wear adequate protective clothes such as protective gloves, working shoes, and hearing protection.
- Do not wear any loose clothing or jewellery (necklaces, rings, etc.). Long hair needs to be tied together.
- Always use a suitable hydraulic oil for refills. Never mix hydraulic oils together.
- Have repairs carried out by specialists only.
- Ensure that no people or items are beneath the device when lowering it.
- Use the jack lift only for its intended purpose.
- Never exceed the maximum load capacity.
- Centre the weight on the jack lift and fasten it with suitable lashing straps. Before lifting any object, the jack needs to be on its lowest setting.
- After raising the object, make sure that the locking bar tip is in place behind a frame notch.
- Always work cautiously and carefully.
- Keep your working area well illuminated and tidy. An untidy and badly illuminated workspace can lead to accidents.

Control/inspection

The device should be visually checked before every use so that the user can exchange damaged, broken, or missing parts on time. The device needs to be checked immediately by a specialist in case any unforeseen fault occurs. If one of the strap chains seems to be damaged, **the device needs to be taken out of order instantly** until it has been repaired by a specialist. It is recommended to have the device checked at least once a year by a specialist.

Installation

1. Mount the hydraulic cylinder to the mounting plate with screws, washers, and nuts. Make sure that the discharge is not damaged during this process.
2. Place the upper end of the lifting cylinder into the lifting frame and fix it with the bolt.
3. Install the foot pedal to the hydraulic cylinder and fix it with an M8×30 screw.
4. Place the handle in the intake of the lifting frame and secure it with a bolt.
5. The locking bar needs to be locked into one of the positions when lifting weights. If this is not the case, it can lead to damage of the jack lift or to serious injury.
6. Check whether all screws are tightened. Then make sure that the tip of the locking bar is behind a notch of the frame.

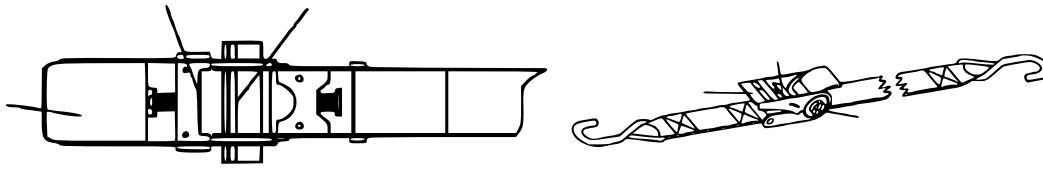



No	Name	No	Name
1	Locking bar tip	2	Frame notch

Operating Instructions

Lifting objects

1. Only use the jack lift on an even and solid surface.
2. To prevent the loaded object from slipping during the lifting process, centre the weight evenly.
3. Place the jack so that the lifting saddle is placed centrally under the object needing to be lifted.
4. Operate the foot pedal until the lifting saddle touches the object to be lifted. Fix the castor rollers. Before raising the load, check that the lifting saddle and weight are in the right position.
5. Secure the object with lashing straps.
6. Repeatedly use the foot pedal to lift the object. Make sure that the locking bar tip properly locks into a notch of the frame when the desired height is reached.
7. Stabilise the jack lift on an even surface by adjusting the stabilisation screw.



 **Attention!** Do not overburden the lashing straps, as otherwise damages to these can occur.

Lowering objects

1. Ensure that no person and no items are beneath the jack lift when lowering it.
2. Use the foot pedal repeatedly to lift the object slightly, then release the locking bar tips from the frame notch.
3. Carefully press the discharge to lower the jack lift.
4. Remove the lashing straps, then remove the object from the jack lift.

Maintenance

Only use hydraulic oil and no other liquids such as breaking cleaner, engine oil, or even polluted oil. Unsuitable oil can lead to damages to the jack lift. An oil exchange should be carried out at least every 6 months. The oil level should be approximately 2.5 cm below the opening.

Expelling air and refilling oil

1. Place the jack lift on an even and solid surface.
2. Carefully remove the oil filling plug.
3. Operate the discharge to make the jack lift go down and quickly operate the foot pedal a few times. Thus, air is expelled from the system. Operate the pump until no more air bubbles arise.
4. After that, fill suitable oil up to the edge of the filling plug.
5. If required, repeat the process of expelling air again.
6. Place the filling plug back.
7. Test the jack lift a few times before placing any objects back onto it. Pump the jack lift a few times up and down.

What to pay attention to when using the jack lift

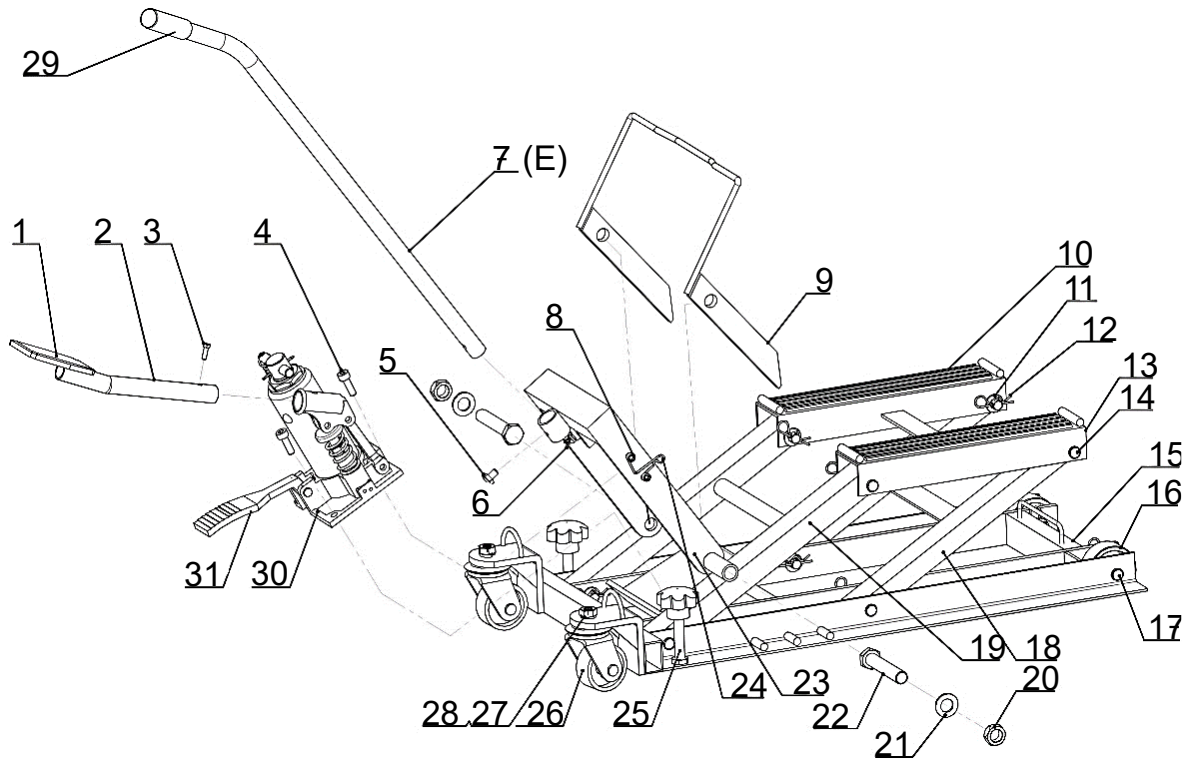
- Be familiar with the operating control, operating procedure, and safety notes.
- Ensure that all connecting frame pieces are stable and secured safely.
- Make sure that you are familiar with the content of this operating manual.
- Make sure that the object can be lifted freely, without any items hindering the lifting process.
- Never use any connecting parts such as beams, rods, etc. bent, damaged, or worn out.
- Check the balance of the loaded object after raising it a few centimetres before it is lifted higher.
- Avoid that the object wobbles during the lifting process.
- Ensure that nobody is near the object.
- Make people aware of the lifted object and warn them.
- Check the jack lift and exchange any parts that are damaged and note down any modifications.
- Never lift more weight than allowed.
- Never use damaged or non-functioning jack lifts.
- Stay focused and concentrated and do not let anything distract you whilst lifting the object.
- Never use the iron beams to lift or transport people.
- **Never lift any object above people's heads!**
- Never leave the lifted objects unattended.
- **Never try to repair or extend the iron parts in any way.**



Troubleshooting

Problem	Cause	Solution
The jack lift cannot be lowered entirely.	Air inside the hydraulic system	Expel air from the hydraulic system.
	Polluted vent valve	Clean vent valve.
The jack lift cannot hold the weight of an object.	Opened vent valve	Fasten valve.
The jack lift cannot be lifted to the maximum height.	Too low oil level	Refill oil.
	Air inside hydraulic system	Expel air from hydraulic system.
The lifting is feeble.	Air inside hydraulic system	Expel air from hydraulic system.
	Polluted oil	Exchange oil.
	Opened vent valve	Entirely close valve.
Weight is not being raised.	Too heavy weight	Reduce weight.
	Opened vent valve	Close valve.
	Too low oil level	Refill oil.

Explosion view and parts list



Nº	Name	Qty.	Nº	Name	Qty.
1	Pedal Cover	1	17	Bolt \varnothing 12x65	6
2	Pedal	1	18	Front lifting arm	1
3	Bolt M6x16	1	19	Rear lifting arm	1
4	Bolt M8x25	2	20	Nut M16	2
5	Bolt M8x12	1	21	Washer \varnothing 16	2
6	Bolt M6x15	1	22	Bolt M16x95	2
7	Handle	1	23	Lift frame	1
8	Bolt M6x12	2	24	Spring	1
9	Safety bar	1	25	Locking screw	2
10	Cover	2	26	Swivel castor	2
11	Washer \varnothing 12	10	27	Washer \varnothing 12	2
12	Split pin	10	28	Nut M12	2
13	Lifting area	1	29	Handle cover	1
14	Bolt \varnothing 12x80	4	30	Hydraulic cylinder	1
15	Base frame	1	31	Pedal	1
16	Fixed castor	2			

Important notice:

The reprint or reproduction, even of excerpts, and any commercial use, even in part, of this instruction manual require the written permission of WilTec Wildanger Technik GmbH.