

Operating Manual

4-in-1 Aquarium Pump CUP-807, CUP-809

50985, 50986



Illustration similar, may vary depending on model

Read and follow the operating instructions and safety information prior to initial operation.

Technical changes reserved!

Illustrations, functional steps and technical data may deviate insignificantly due to continuous further developments.



The information contained in this document may alter at any time without prior notice. No part of this document may be copied or otherwise duplicated without prior written consent. All rights reserved. WilTec Wildanger Technik GmbH cannot be held liable for any possible mistakes in this operating manual, nor in the diagrams and illustrations shown.

Although WilTec Wildanger Technik GmbH has made every possible effort to ensure that this operating manual is complete, accurate, and up-to-date, errors cannot be ruled out entirely.

If you have found an error or wish to suggest an improvement, we look forward to hearing from you. Send us an e-mail to:

service@wiltec.info

or use our contact form:

<https://www.wiltec.de/contacts/>

The most recent version of this manual in several languages can be found in our online shop:

<https://www.wiltec.de/docsearch>

Our postal address is:

WilTec Wildanger Technik GmbH
Königsbenden 12
52249 Eschweiler
Germany

To return your goods for exchange, repair, or other purposes, please use the following address. Attention! To allow for a trouble-free complaint or return, it is important to contact our customer service team before returning your goods.

Retourenabteilung
WilTec Wildanger Technik GmbH
Königsbenden 28
52249 Eschweiler
Germany

E-mail: **service@wiltec.info**

Tel: +49 2403 55592-0

Fax: (+49 2403 55592-15)




Introduction

Thank you for choosing to purchase this quality product. To minimise the risk of injury, we ask you to always take some basic safety precautions when using this product. Please read this operating manual carefully and make sure that you understand it.

Keep these operation instructions in a safe place.

Installation

1. Unpack all parts and check if they are complete.
 2. Before installation, please check if the UV lamp is installed correctly:
 - Press the two buttons on the side of the pump body to open it.
 - Check if the UV lamp is installed in the correct position. If not, loosen the screw connection and turn the screw nut counter-clockwise to loosen the quartz glass tube (do not change the position of the O-ring underneath the quartz glass tube).
 - Reinsert the UV lamp.
 - Reinsert the quartz glass tube and check that the position of the O-ring is still unchanged.
 - Tighten the screw nut again and reassemble the pump body.
 3. Attach the suction cups to the back plate. Attach the back plate to the pump.
 4. Attach the venturi tube to the pump.
 5. Place the pump inside your fish tank by attaching the suction cups to any aquarium pane.
-  **Important:** The device must be completely immersed in the water.
6. Switch on the UV lamp by sliding the on/off-switch to the left.
 7. Place the venturi tube above the water level so that air can flow through it.
 8. Connect the pump to the electricity network.

Maintenance

- You can decide yourself how often you want to maintain your device; this depends on the water volume of the fish tank and the number of fish. The best opportunity to clean the filter is when you change the water of the fish tank. You can use the water to clean all parts of the device.
- The following parts should be cleaned:
 - № 5: impeller
 - № 4: adjustable outlet / nozzle
 - № 14–16: filter foam, filter body, lid
 - № 3: filter basket

Replacing the UV lamp

- The UV lamp should be replaced after six months, even if it is still intact, to ensure that the lamp is always working effectively.
- Check the light indicator on the front side of the device to make sure that the UV lamp is in permanent operation. A glowing indicator means that the UV lamp is in operation.
- Replacing the UV lamp:
 - Disconnect the device from the electricity network.
 - Take the device out of the fish tank.
 - Press the two buttons on the side of the pump body to open it. You can now separate the motor from the pump body.
 - Loosen the screw connection and turn the screw nut counter-clockwise to loosen the quartz glass tube (do not change the position of the O-ring underneath the quartz glass tube).
 - Replace the old UV lamp with a new one.
 - Reinsert the quartz glass tube and check that the position of the O-ring is still unchanged.
 - Tighten the screw nut again and reassemble the pump body.



Safety instructions

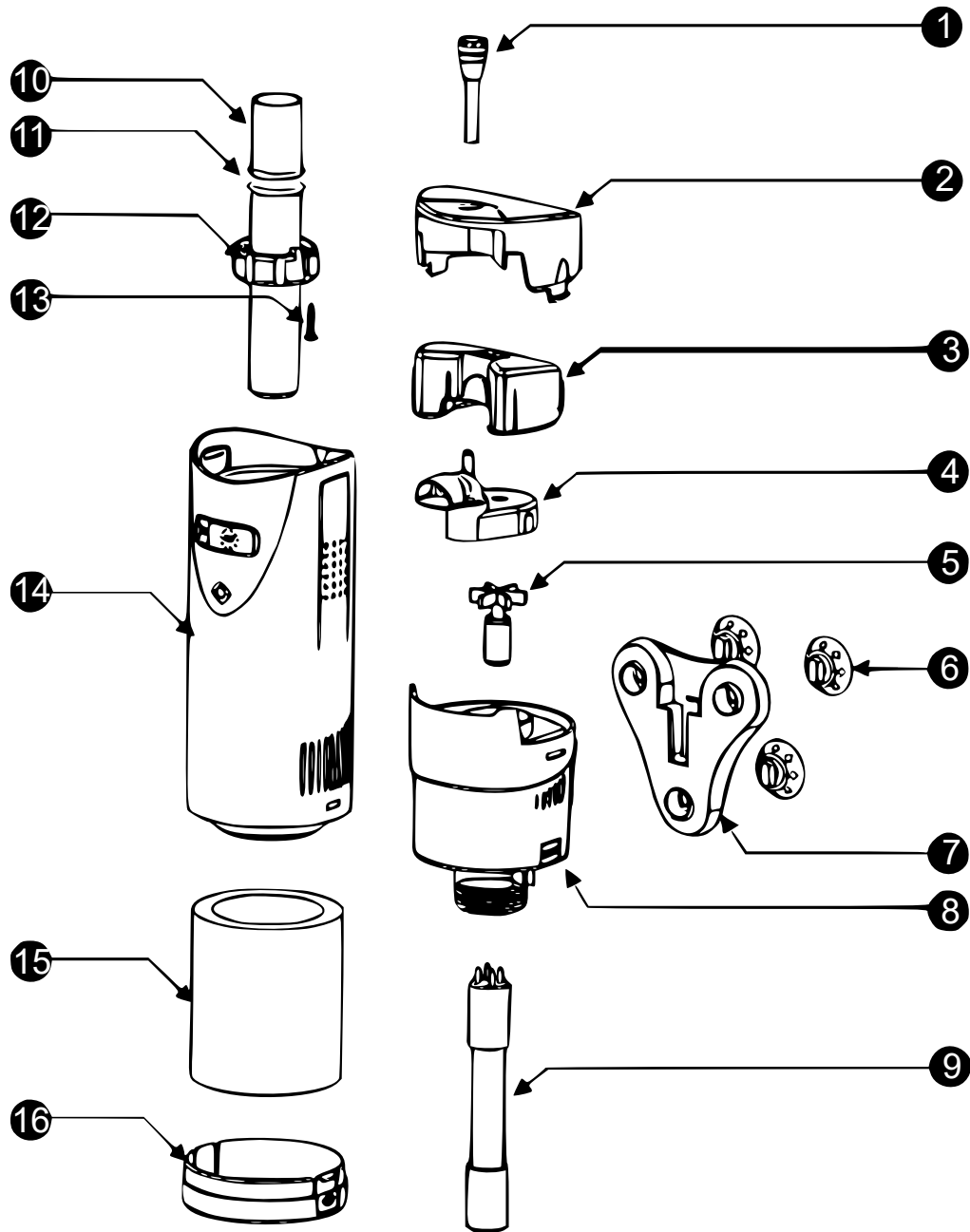
CAUTION!

- Disconnect device from electricity network before installation/maintenance.
- Put only in operation if device is submerged completely.
- The device must never run dry. Dry run causes overheating which in turn causes permanent damage to the device.
- Do not undertake any structural changes. Replace parts only in accordance with this operating manual.
- All connections must be earthed.
- Adhere to the specified voltage.
- The device must not be used in other liquids than water.
- The temperature of the water must not exceed 30 °C (86 °F).

Technical specifications

Item number	50985	50986
Model	CUP-807	CUP-809
Energy supply	220–240 V/50 Hz	220–240 V/50 Hz
Total power (W)	10	10
UV lamp (W)	7	9
Max. aquarium volume (ℓ)	500	720
Flow rate (ℓ/h)	700	700
Delivery head (m)	1,5	1,5

Exploded view and parts list



No	Name	No	Name
1	Venturi tube	9	UV lamp
2	Upper lid	10	Quartz glass tube
3	Filter basket	11	O-ring
4	Adjustable outlet	12	Screw nut
5	Pump shaft and impeller	13	Screw
6	Suction cups	14	Pump body
7	Back plate	15	Filter foam
8	Motor	16	Bottom lid

Regulations for waste disposal

The Waste Electrical and Electronic Equipment Directive (WEEE Directive, 2012/19/EU) of the EU was implemented in the German law related to electrical and electronic equipment and appliances.

All WilTec electric devices that fall under the WEEE directive are labelled with the symbol of a crossed-out wheeled rubbish bin. This symbol indicates that this electric device must not be disposed of with the domestic waste.

WilTec Technik GmbH is registered with the German registration authority EAR (Stiftung Elektro-Altgeräte Register) under the WEEE-registration number DE45283704.

Disposal of used electrical and electronic devices (intended for use in the countries of the European Union and other European countries with a separate waste collection system for these devices).

The symbol on the packaging or the product itself indicates that this product must not be treated as normal domestic waste but must be disposed of at a recycling collection station for electrical and electronic waste.

By disposing of this product correctly, you contribute to the protection of the environment and the health of your fellow people. Inappropriate disposal threatens the environment and health.



Material recycling helps to reduce the consumption of raw materials.

Additional information about the recycling of this product can be provided by your local commune, the municipal waste disposal facilities, or the store where you purchased the product.

Address:
 WilTec Wildanger Technik GmbH
 Königsbenden 12 / 28
 52249 Eschweiler
 Germany

Important notice:

Any reprint or reproduction, even of excerpts, and any commercial use, even of parts of this operating manual requires the written permission of WilTec Wildanger Technik GmbH.