

# Operation Manual

## Multifunctional Sharpening Station

51251



Illustration similar, may vary depending on model

Please read and follow the operating instructions and safety information prior to initial operation.

Technical changes reserved!

Illustrations, functional steps, and technical data may deviate insignificantly due to continuous further developments.



The information contained in this document may alter at any time without prior notice. No part of this document may be copied or otherwise duplicated without prior written consent. All rights reserved. WilTec Wildanger Technik GmbH cannot be held liable for any possible mistakes in this operating manual, nor in the diagrams and illustrations shown.

Although WilTec Wildanger Technik GmbH has made every possible effort to ensure that this operating manual is complete, accurate, and up-to-date, errors cannot be ruled out entirely.

If you have found an error or wish to suggest an improvement, we look forward to hearing from you.

Send us an e-mail to:

[service@wiltec.info](mailto:service@wiltec.info)

or use our contact form:

<https://www.wiltec.de/contacts/>

The most recent version of this manual in several languages can be found in our online shop:

<https://www.wiltec.de/docsearch>

Our postal address is:

WilTec Wildanger Technik GmbH  
Königsbenden 12  
52249 Eschweiler Germany

To return your goods for exchange, repair, or other purposes, please use the following address. Attention! To allow for a trouble-free complaint or return, it is important to contact our customer service team before returning your goods.

Retourenabteilung  
WilTec Wildanger Technik GmbH  
Königsbenden 28  
52249 Eschweiler Germany

E-mail: **service@wiltec.info**

Phone: +49 2403 55592-0

Fax: (+49 2403 55592-15)



## Introduction

Thank you for choosing to purchase this quality product. To minimise the risk of injury, we ask you to always take some basic safety precautions when using this product. Please read this operating manual carefully and make sure that you understand it. Keep these operation instructions in a safe place.

## Technical specifications

<b>Power supply</b>	230 V ~ 50 Hz
<b>Power consumption (W)</b>	95
<b>Dimensions of grinding disc (mm)</b>	∅ 50 × 8
<b>Load-less rotation speed (r/min)</b>	6,000
<b>Drill diameter (mm)</b>	3–10
<b>Chisel width (mm)</b>	6–51
<b>Acoustic pressure (dB (A))</b>	74
<b>Acoustic power (dB (A))</b>	87
<b>Size (mm)</b>	approx. 23 × 15 × 16

## Safety instructions and precautions

If using electrical devices, always obey the following basic precautions:

- Pull the power plug out of the socket when you do not need to use the device, before you mount or remove parts, and before you clean the device.
- To protect yourself from electric shocks, you must not plunge the cable, power plug, or device itself into water or other liquids. To reduce the danger of the device starting accidentally, make sure that the power switch is off before plugging the power plug into the socket.
- Do not operate a device the cable or plug of which is damaged, if the device itself is damaged or has been dropped or damaged in another way.
- Before operating the device, check it for damaged parts. Such parts need to be repaired or replaced correctly.
- Never use the device in a dangerous zone and do not expose it to humid or wet conditions.
- Make sure that your work area is well-lit.
- Make sure that the cable is not dangling over the edge of a table or touching a hot surface.
- Only use the device or its accessories for its purpose stated.
- Never let the grinding disc operating without supervision.
- Keep all bystanders, especially children, in a safe distance from the working zone.
- Grinding jobs generate sparks. Therefore, keep a safe distance between the device and all flammable matter or material.
- Never touch a rotating grinding disc.
- The motor is not suitable for permanent operation. Therefore, make a pause after 15 min of uninterrupted operation.
- Never use the grinding disc without any module.
- Before removing a module, pull out the power plug and wait for the grinding disc to come to rest.

### Precautions concerning user

- Do not wear loose clothes, ties, rings, bracelets, or other pieces of jewellery that could be caught by moving parts.
- It is recommended to wear anti-slip shoes.
- Securely tie long hair together.
- It is recommended to use ear protection and gloves.
- Always wear protective goggles. **Note:** Goggles compensating any debility of sight are not shock-proof and thus not suitable for use as protective goggles.
- With grinding jobs being performed that generate a lot of dust, always use a face or dust mask.

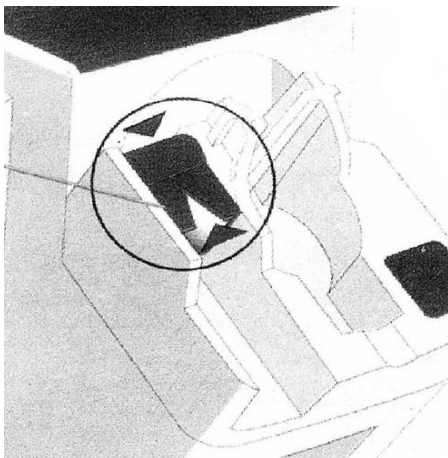
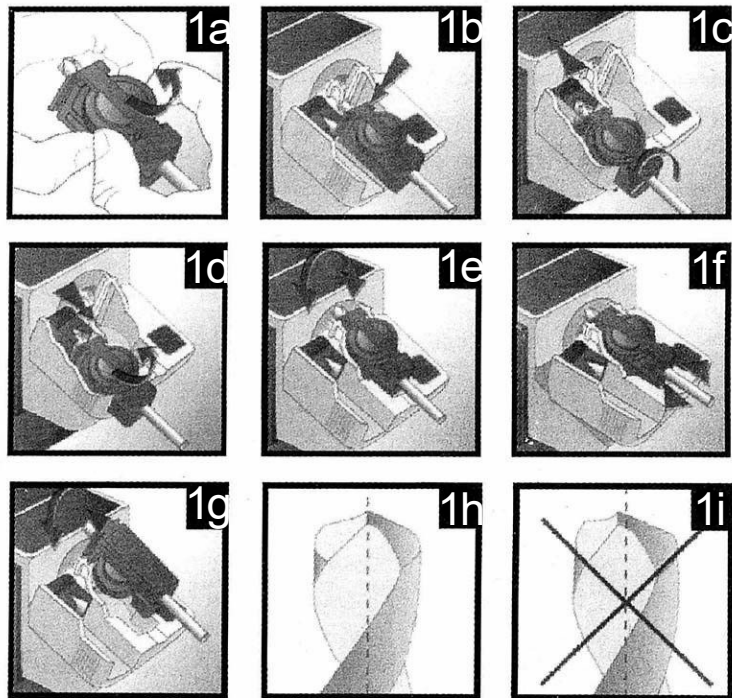
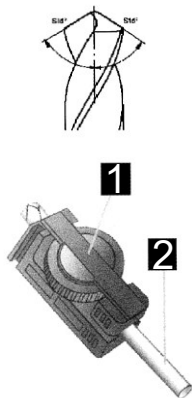
### Maintaining and cleaning

- Pull out the plug before performing any cleaning job.
- Keep the device free from oil and grease.
- Keep the device in a dry place.

### General remarks

1. Fastener
2. HSS drill
3. V bar

“True point”  
action precisely  
grinds the correct  
grinding angle



Max. drill diameter: 10 mm ( $\frac{3}{8}$ " )



Min. drill diameter: 3 mm ( $\frac{7}{64}$ " )

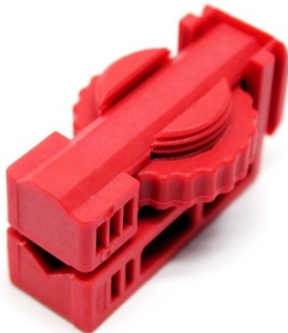




### Sharpening high-speed steel parts

1. Fix the module marked “High Speed Steel Drill Sharpener” onto the power unit.
2. Remove the fastener from the fastener support and insert the drill to be sharpened **(1a)**. Slightly screw the fastener so that the drill is still easy to be moved.
3. Place the fastener locking the drill into the adjustment slot, using the gaps/grooves to lower it correctly **(1b)**.
4. Move the drill upwards so that it is inside the V guide and touches the metal end stop **(1c)**.
5. Now turn the drill until the V guide is completely above it **(1c)** – the four edges of the drill now should touch the sides of the V guide.
6. Make sure that the drill and fastener are completely inside the adjustment slot. As soon as the drill is oriented in such a way, tighten the locking ring **(1d)**.
7. Lift the V guide and remove the fastener and drill.
8. Switch the power on.
9. Swivel the fastener-holder before the grinding disc, securing the process with one finger exerting a slight pressure **(1f)**.
10. Remove the drill and fastener and turn that piece **(1g)**. Repeat step 9.
11. Check if the front of both edges is equally sharpened. They should converge in the centre, as shown in **(1h)**, not as shown in **(1i)**.
12. Switch the device off. Before removing the module, make sure that the grinding disc has come to a rest.

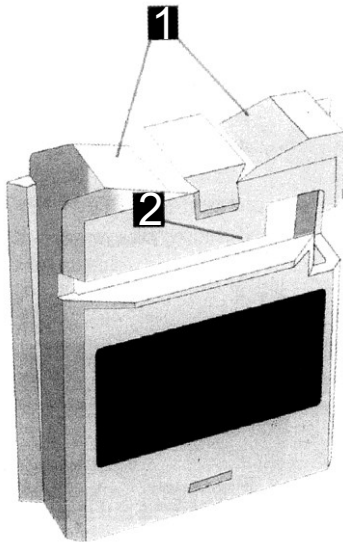
### Fastening means for high-speed steel parts



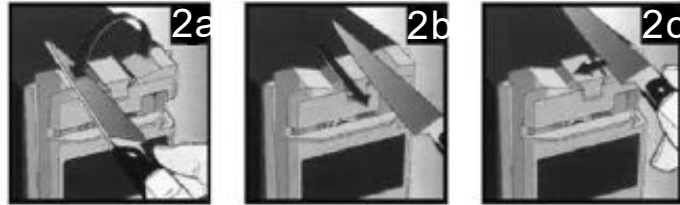
1. The face with the step points upwards, the smooth side points towards the HSS drill.
2. Un-tighten the counter-nut, then turn the counter-nut and fastener by 180°; thus, the face with the step will point downwards, towards the drill.

## Grinding knives and pairs of scissors

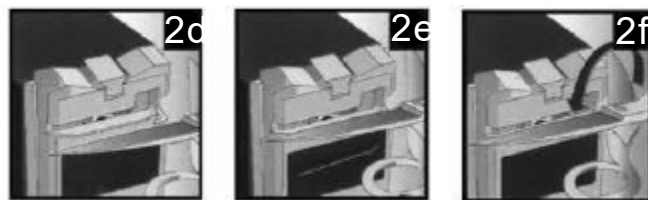
1. Knife-grinding slot
2. Scissors-grinding slot



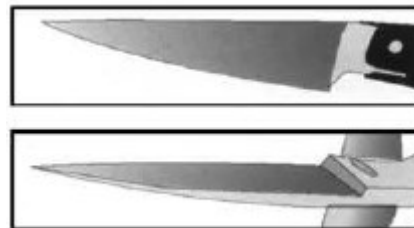
### Grinding knives



### Grinding scissors



This module is only suitable for the use on domestic knives and scissors with straight blades.



**Do not** use any serrated knives.

- Grinds all knives and scissors with straight blades.
- Unique point for grinding knives.
- Precise angled rail for sharpening scissors.

### Knives

1. Slide the module marked “Knife & Scissor Sharpener” onto the power unit.
2. Switch the power on.
3. The knife must be oriented so that its handle points towards the user; now, set the blade of the knife into the guide slot **(2a)**.
4. As soon as the blade touches the grinding disc, move it over the disc, exerting a slight pressure, until you reach the point, then remove it. Make sure not to exert too high a pressure **(2b)**.
5. Set the other face of the knife into the other guide slot **(2c)** and repeat step 4.
6. Sharpen the faces one after the other until the blades are well sharpened.
7. Switch the device off. Before removing the module, make sure that the grinding disc has come to a rest.

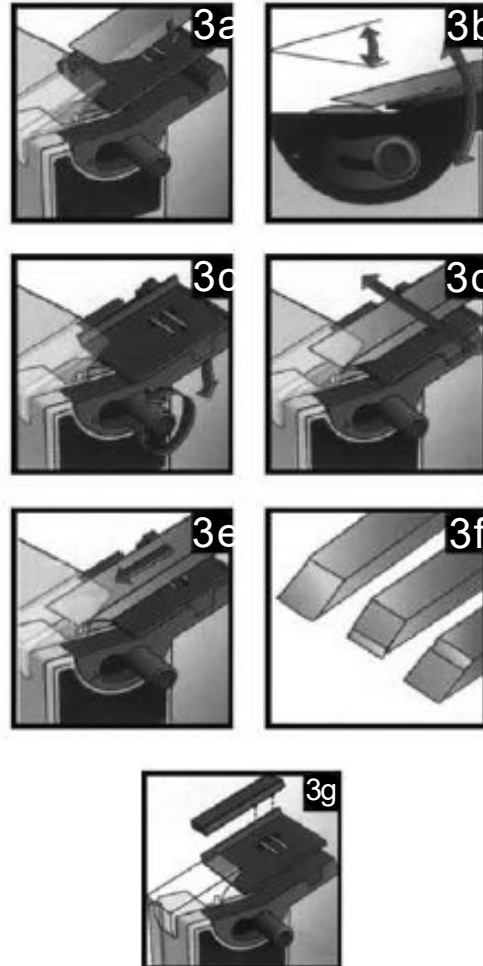
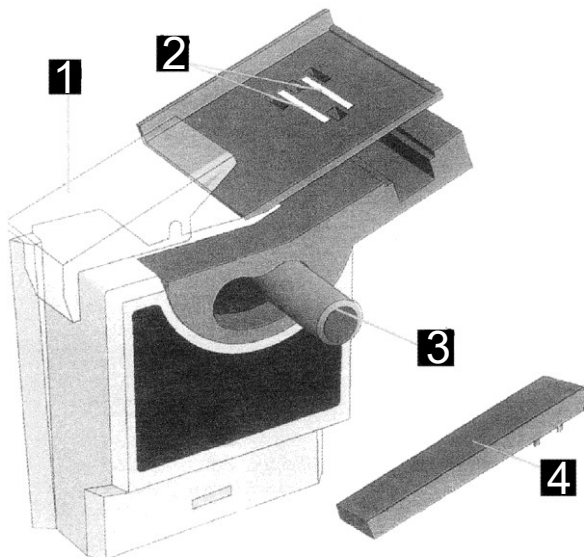
### Scissors

1. Slide the module marked “Knife & Scissor Sharpener” on the power unit.
2. Switch the power on.
3. Open the scissor completely.
4. Slide the first blade of the pair of scissors through the front guide slot **(2d)** and the joint and other blade to the right.
5. Move the blade from the joint to the tip over the grinding disc. While doing so, exert a slight, uniform pressure, but make sure that the pressure is not too high **(2e)**.

6. Remove the pair of scissors and turn it to sharpen the other blade (**2f**) – slide the joint of the pair of scissors to the right to sharpen it.
7. Repeat, if necessary, until the blades are well sharpened.
8. Switch the device off. Before removing the module, make sure that the grinding disc has come to a rest.

### Grinding bits and chisels

1. Protective shield for additional safety
2. Powerful built-in magnet to hold the blade
3. Adjustable grinding angle from 20° to 40°
4. Guide for small chisels



Grinds bits and chisels up to a width of 50 mm (2").

1. Slide the module marked “Chisel & Plane Sharpener” onto the power unit.
2. Place the tool so that the blade points towards the edge of the disc (**3a**). The magnet helps you holding the tool.
3. The grinding angle needs to match the present bevel angle of the point of the blade. If necessary, re-adjust.
4. To re-adjust the angle, un-tighten the angle button (**3c**), adjust the angle of the plate, then re-tighten.
5. Make sure that the blade of the tool touches the grinding disc, then switch the device on.
6. Swivel the blade over the grinding disc, exerting a slight, uniform, and uninterrupted pressure (**3d**), otherwise, the blade is sharpened unevenly.
7. Gradually slide the blade downwards on the grinding disc while grinding (**3e**). Do not exert too high a pressure, grind stepwise, and repeat step 6.
8. Remove the blade, making sure that the edge chamfered and the point have been evenly sharpened. Otherwise, re-adjust the grinding angle. It is important that the bevel grinding angle and the angle of the blade present match. Hereby, you will avoid that too much metal is removed and make sure that the blades keep their optimal shearing angle (**3f**).



9. If grinding small chisels, set the appropriate guide to the spacer plate and sharpen as described above **(3g)**.
10. Switch the power off. Before removing the module, make sure that the grinding disc has come to a standstill.
11. After grinding, it is recommended to resharpen the point of the blade with the help of a knife grinder.

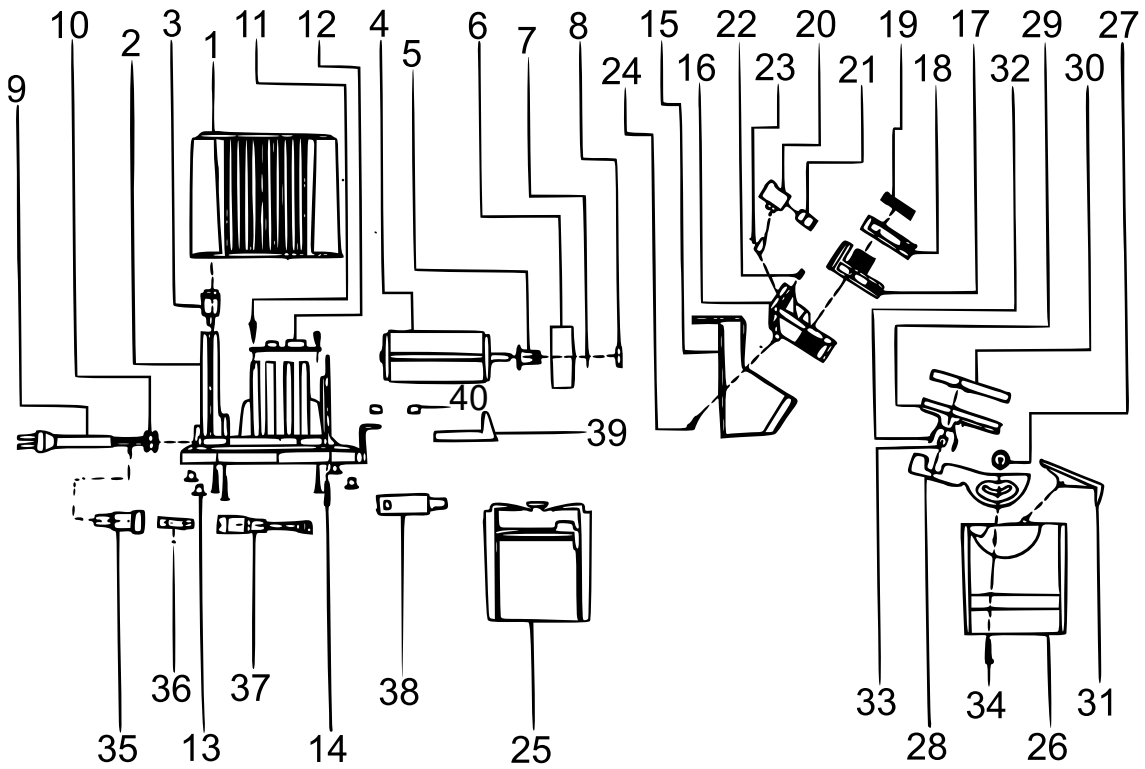
 **Attention!**

When the device is not used, remove the following accessories:

- drill chuck **(15)**
- fastener-holder for scissors **(25)**
- blade holder **(26)**



**Exploded view and parts list**



No	Name	Qty.	No	Name	Qty.
1	Upper side of casing	1	21	Right chuck	1
2	Base	1	22	Supporting iron sheet	1
3	Interrupter	1	23	Fixing bow	1
4	Motor	1	24	Screw	1
5	Wheel valve	1	25	Fastener-holder for scissors	1
6	Grinding disc	1	26	Blade holder	1
7	Direction-of-rotation symbol	1	27	Lock nut	1
8	Screw-nut	1	28	Angle tightener	1
9	Cable	1	29	Supporting bearing	1
10	Cable coating	1	30	Movable arm of holder	1
11	Screw	2	31	Protective grid	1
12	Conductor board	1	32	Magnet board	2
13	Flexible foot	4	33	Magnet	1
14	Screw	4	34	Screw	1
15	Drill chuck	1	35	Locking tube	1
16	Supporting chuck	1	36	Fuse	1
17	Locking piece	1	37	Locking tube	1
18	Gripping piece	1	38	Auxiliary switch	1
19	Lock nut	1	39	Interrupter	1
20	Interrupter board	1	40	Cylinder	2

## Regulations for waste disposal

The Waste Electrical and Electronic Equipment Directive (WEEE Directive, 2012/19/EU) of the EU was implemented in the German law related to electrical and electronic equipment and appliances.

All WilTec electric devices that fall under the WEEE directive are labelled with the symbol of a crossed-out wheeled rubbish bin. This symbol indicates that this electric device must not be disposed of with the domestic waste.

WilTec Technik GmbH is registered with the German registration authority EAR (Stiftung Elektro-Altgeräte Register) under the WEEE-registration number DE45283704.

Disposal of used electrical and electronic devices (intended for use in the countries of the European Union and other European countries with a separate waste collection system for these devices).

The symbol on the packaging or the product itself indicates that this product must not be treated as normal domestic waste but must be disposed of at a recycling collection station for electrical and electronic waste.

By disposing of this product correctly, you contribute to the protection of the environment and the health of your fellow people. Inappropriate disposal threatens the environment and health.



Material recycling helps to reduce the consumption of raw materials.

Additional information about the recycling of this product can be provided by your local commune, the municipal waste disposal facilities, or the store where you purchased the product.

Address:  
WilTec Wildanger Technik GmbH  
Königsbenden 12 / 28  
52249 Eschweiler Germany

Important Note:

Reproduction and any commercial use (of parts) of this operating manual, requires a written permission of WilTec Wildanger Technik GmbH.