

# Operation Manual

## Drain Cleaner

51451



Illustration similar, may vary depending on model

Read and follow the operating instructions and safety information before using for the first time.

Technical changes reserved!

Due to further developments, illustrations, functioning steps, and technical data can differ insignificantly.

Updating the documentation

If you have suggestions for improvement or have found any irregularities, please contact us.



The information contained in this document may alter at any time without previous notice. It is prohibited to copy or spread any parts of this document in any way without prior written allowance. All rights reserved.

The WilTec Wildanger Technik GmbH cannot be held accountable for any possible mistakes in this operating manual, nor in the diagrams and figures shown.

Even though, the WilTec Wildanger Technik GmbH has undergone biggest possible efforts to ensure that the operating manual is complete, faultless, and up to date, mistakes cannot be entirely avoided.

If you should find a mistake or wish to make a suggestion for improvement, we look forward to hearing from you.

Send an e-mail to:

[service@wiltec.info](mailto:service@wiltec.info)

or use our contact form:

<https://www.wiltec.de/contacts/>

The most recent version of this manual in various languages can be found in our online shop via:

<https://www.wiltec.de/docsearch>

Our postal address is:

WilTec Wildanger Technik GmbH  
Königsbenden 12  
52249 Eschweiler  
Germany

To return orders for exchange, repair, or other purposes, please use the following address. Attention! To allow for a smooth execution of your complaint or return, it is important to contact our customer service team before returning the goods.

Returns Department  
WilTec Wildanger Technik GmbH  
Königsbenden 28  
52249 Eschweiler

E-mail: **service@wiltec.info**

Tel: +49 2403 55592-0

Fax: +49 2403 55592-15



## Introduction

Thank you for purchasing this quality product. **To minimise the risk of injury we urge that our clients take some basic safety precautions when using this device. Please read the operation instructions carefully and make sure you have understood its content.**

Keep these operation instructions safe.

## Application

The **mobile professional pipe cleaner** is applied not only in industrial and workshop area but also in the private area. Contaminated or clogged pipes in household, hotel, gastronomy, communal facilities, and much more can be cleaned professionally and quickly. The device is electrically operated with 390 W, with clockwise or counter-clockwise rotation adjustable via switch position, mains voltage 230 V, 400 rpm.

## Safety instructions



**ATTENTION!** When using electric tools, the following basic safety precautions must be observed to protect yourself against electric shock, injury and fire. Read all these instructions before using this power tool and keep the safety instructions in a safe place!

### *Electrical safety*

- Always use an earthed power connection with the appropriate mains voltage. You can find the corresponding mains voltage on the type plate. If you have any doubts about the connection being earthed, have it checked by a qualified professional. Never use a faulty electric cable.
- Do not open the device in a wet or damp environment or when you are wet yourself and protect it from direct sunlight.
- Install this device in a safe location so that nobody can step on the cable, fall over it, or damage it. Make sure as well to provide sufficient cooling through the ambient air and avoid heat accumulation.
- Before cleaning the device, pull out the plug, and only use a damp cloth to clean it. Avoid using detergents and make sure that no liquids may penetrate the device.
- Do not overload your power tool. It shall work better and safer in the specified performance range.
- Do not use the device for purposes that it has not been designed for. Do not use the cable to pull out the plug or to carry the device. Protect the cable from heat, oil, and sharp edges.
- Pull out the plug when not using the device, before maintaining it, or before changing an attachment, e.g., drill or rotary cutter.
- The electric part of the device contains no parts that can be inspected or serviced by the user. Leave the maintenance, adjustment, and repair to qualified technical personnel. In case of unauthorised intervention, the 2-year warranty is no longer valid! Keep these operation instructions safe.

### *Safety during operation*

- This device is not intended to be used by persons (including children) with limited physical, sensory, or mental capabilities or experience and/or lack of knowledge, unless a person responsible for their safety supervises them or gives them instructions on how to use the device.
- Children should be supervised to ensure that they do not play with the device.



- Keep your work area clean and ordered. Disorder in the work area can result in accidents.
- Consider environmental influences. Do not expose power tools to rain. Do not use power tools in damp or wet areas. Ensure a good working area lighting. Do not use electric tools where there is a risk of fire or explosion.
- Protect yourself from electric shocks. Avoid touching earthed surfaces (e.g., pipes, radiators, electric cookers, refrigerators).
- Safely store unused electrical tools. Unused electric tools should be placed in a dry, elevated, or enclosed place, out of the reach of children.
- Wear appropriate clothing. Do not wear loose clothing or jewellery, that could be caught by moving parts. When working outdoors, non-slip footwear is recommended. Apply a hairnet for long hair.
- Use protective equipment. Wear protective goggles. Use a breathing mask when doing jobs that generate a lot of dust.
- Avoid unintentional start-up. Make sure that the switch is off when plugging in the plug.
- Use extension cables for outdoor use. Only use approved and appropriately marked extension cables outdoors.
- Be attentive. Fully concentrate on what you are doing. Go to work with common sense. Do not use the power tool when you are unconcentrated.
- Check the power tool for possible damage. Before a further use of the power tool, protective devices or slightly damaged parts must be carefully inspected for their correct function.
- Check if the moving parts work properly and do not jam, or if parts are damaged. All parts must be properly assembled and meet all conditions to ensure a proper operation of the power tool. Damaged protective devices and parts must be repaired or replaced as required by a recognised specialist workshop, unless other specification in these instructions.
- Damaged switches must be replaced by a skilled electrician. Do not use power tools whose switch does not turn the device on and off.
- Only connect to sockets with a protective contact. The machine may only be operated with max. 10–30 mA rated fault current. Observe the specified mains voltage.

#### *Special safety instructions*

- Only carry the spiral with appropriate gloves. Do not reuse damaged gloves.
- It is important to ensure that a latex glove is worn under the glove for hygienic reasons. Do not reuse damaged latex gloves.
- Wear rubber boots during cleaning work to be sure to be insulated.
- The spiral must be removed completely from the holding basket before the machine is switched on.
- Make sure that the pipe cleaning machine switch is set to “o” or to “OFF” before inserting the mains plug into the power connection.
- Always observe the specified mains voltage when using electrical devices.
- Select the appropriate tool for the respective clogging and the pipe diameter to be cleaned to prevent the tool from being clogged in the clogging and to prevent the spiral from being unscrewed from the pipe.
- Only use this machine and its accessories to clean sewage pipes, no chimneys, wells, etc. to prevent damage.
- Do not modify tools by sanding or similar to prevent damage to the pipes/pipe bends.
- Use a camera system to detect the cause of blockage in the pipe.

#### **Residual risks**

Even when all safety instructions are observed, the following residual risks can occur:

- the spiral can overlap (if the working arc is too large); then, there is a risk of clipping;
- the spiral can be sputtered out of the pipe. **Risk of injury!**



### Intended use

- The pipe cleaning machines may only be used for cleaning pipes with a diameter of 32 mm to 100 mm.
- The pipe cleaning machines are only designed for short-term operation and are therefore only permitted for max. 15 min of continuous operation! This device may only be used as specified.

### Control/inspection

- Prior to commissioning the pipe cleaning device, a visual inspection must be carried out to detect leaks, damage, loose, missing, or worn parts.
- The pipe cleaning unit must be inspected immediately if it has been overloaded or subjected to a strong impact. The control should be carried out by a specialist. An annual inspection of the pipe cleaning device is recommended. Defective parts must be replaced immediately. If this is not possible, the device must not be put into operation again.
- Regularly apply lubricant to all moving parts. Regularly check the cleaner for rust, cracks and corrosion. Clean the affected areas with an oily cloth.
- If scrapping of the cleaner is necessary, please recycle it.
- Maintain your tools with care. Keep the cutting tools sharp and clean for better and safer operation. Follow the instructions for lubrication and tool change. Periodically check the power cable connection and, if damaged, have it replaced by a recognised specialist. Check the extension cables regularly and replace them if they are damaged. Keep handles dry, clean and free of grease and oil.

### Technical specifications

<b>Energy supply</b>	230 V, 50 Hz
<b>Tube diameter (mm)</b>	32–100
<b>Max. length (m)</b>	14
<b>Spring diameter (mm)</b>	16
<b>Rotational speed (1/min)</b>	400
<b>Weight (kg)</b>	22
<b>Working weight (kg)</b>	12
<b>Input/output power (W)</b>	390/250

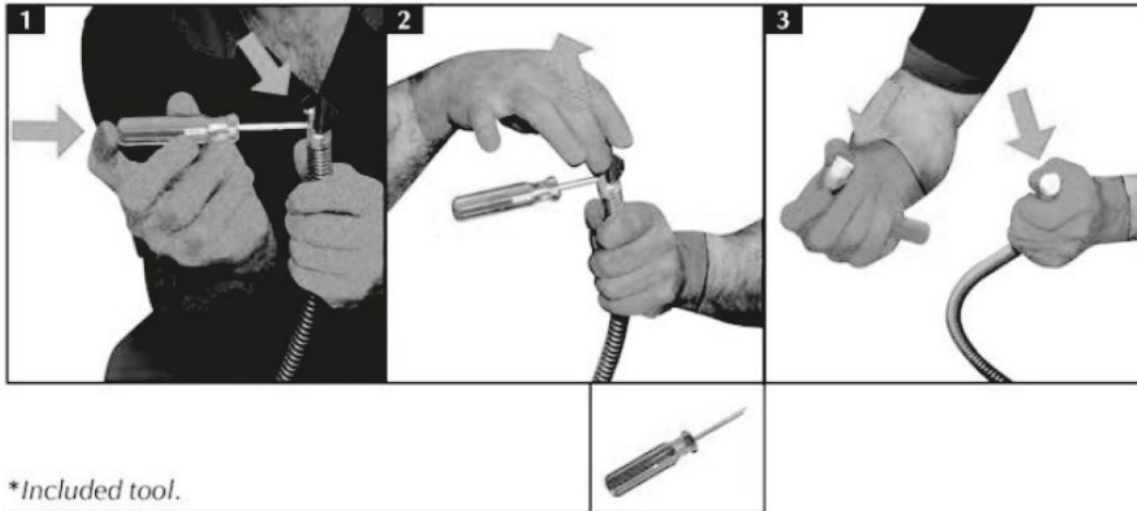
### Scope of delivery

- Pipe cleaning machine
- Guide hose (6 parts, total 13.8 m)
- Drilling and cutting heads
- Gloves
- Assembly tool
- Manual

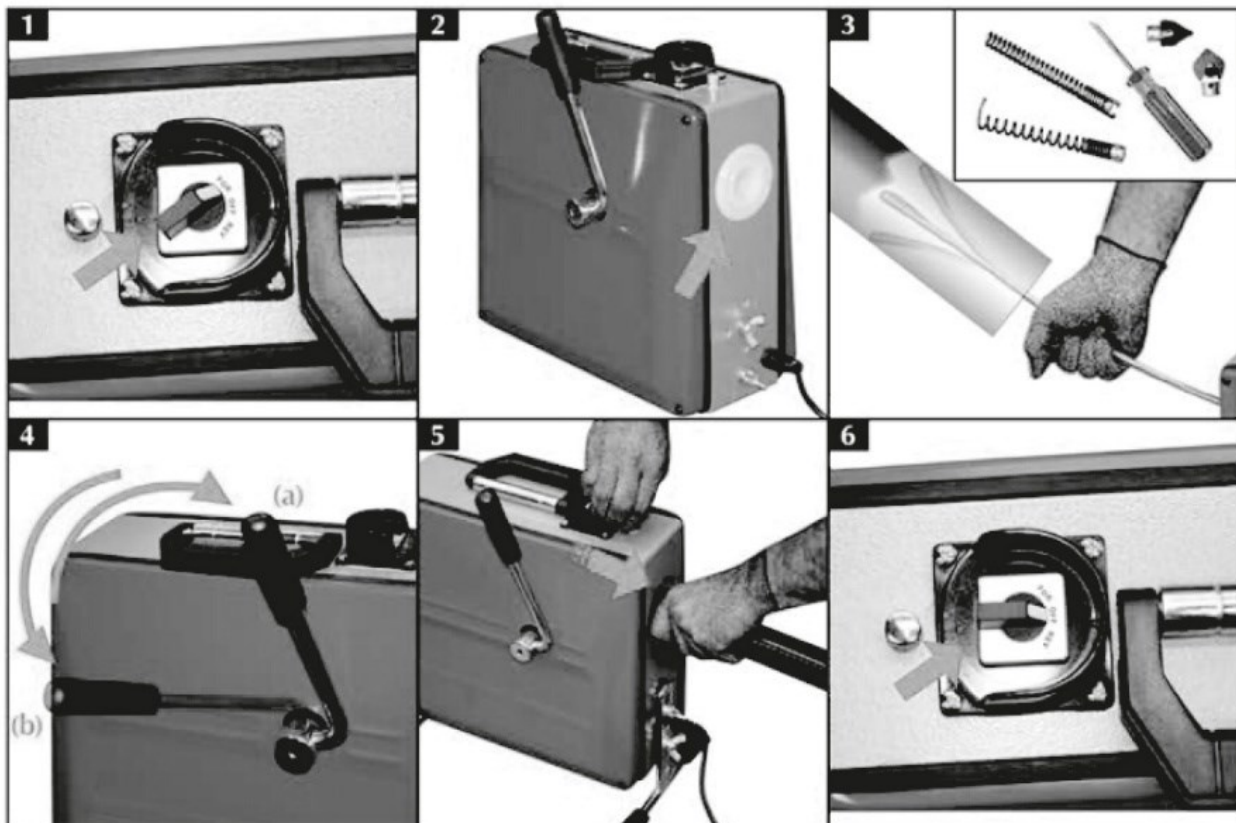
### Commissioning

- Plug the plug of the pipe cleaner into a suitable socket. Make sure that the switch is in the “OFF” position (fig. 1, commissioning).
- To loosen the clog, use only the small diameter drill and first drill the clogging.

- If the clogging is open and the water drains slowly, use the largest adapted drill to completely drill the clogging. If the blockage is removed, a thorough rinse is recommended. If present, the pipe wall should be cleaned with a chain spinning drill with running water.
- Depending on the clogging, different tools can be attached to the spiral. Select a suitable attachment and attach it to the spiral. Make sure that the attachment is securely engaged in the holder. The attachment can only be removed with the help of a screwdriver.
- The attachment may only be changed if the spiral is not in the device. To release the spiral, the lateral lever must be in pos. 4a. You can now simply pull the spiral out of the device.

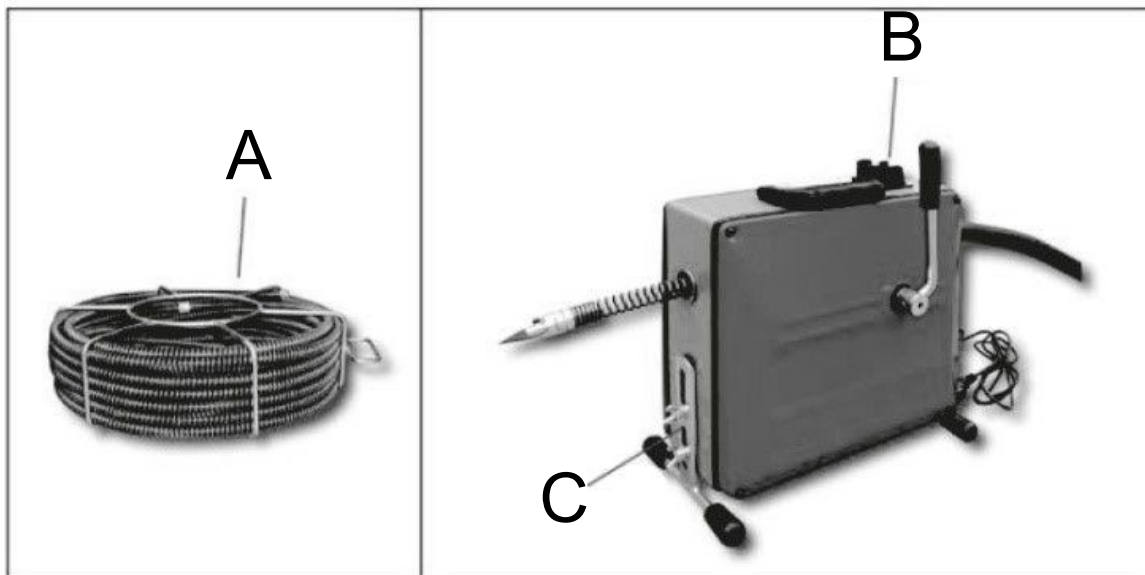


- To be able to use the pipe cleaning device, the white plastic sleeve must be inserted correctly. Please check the seat of the sleeve before each use (2). Make sure that the lever is in pos. 4a, and push the spiral through the device until the drill comes out of the device at the front.



*Commissioning*

- The spiral must be guided cautiously and manually until it is clogged in the pipe. The handle must be in rest position (Pos. 4a). In this position, the spiral does not rotate and thus can be moved back and forth within the tube.
- Wear work gloves to operate the spiral. Position the unit a maximum of 50 cm in front of the tube opening to clean the tube. Insert the spiral into the tube until you feel a counter-pressure, and the clogging in the tube is reached. Pull the spiral out of the unit until an arc is formed. Make sure that the working sheet is not too big. **Risk of injury!**
- Move the switch to the “FOR” position and press the lever (pos. 4b). If the spiral has penetrated the tube so far that there is no longer a bow, turn the lever back into position a and form a new working arc. Repeat this process until the clogging has solved.
- In case of stiffness, it can help to turn the spiral briefly backwards (position “REV”). Right-left turning (“FOR”/“REV”) prevents the spiral from being locked. The tool can be released from the clogging by moving the spiral back and forth and clockwise and anti-clockwise.
- As soon as the clogging is released or the pipe is cleaned, pull the spiral back out of the pipe with the hand. Make sure that the hand lever is in position a. Take care of no water or dirt getting into the unit.
- After the work has been completed, switch the device switch to “OFF,” and disconnect the device from the mains.



- The nuts on support C can be released to regulate the height and inclination of the unit by adjusting the position of the nuts.
- To insert or remove the spiral A into the device, the switch B must be in the “OFF” position, and the side lever must be upwards, as shown in the figure.
- Never change the tool while the spiral is in the machine

## Disposal regulations

EU guidelines regarding the disposal of scrap electric appliances (WEEE, 2012/19/EU) were implemented in the law related to electrical and electronic equipment and appliances.

All WiTec electric devices that fall under the WEEE regulations are labelled with the crossed-out wheeled waste bin logo. This logo indicates that this electric equipment must not be disposed with the domestic waste.

The company WiTec Technik GmbH has been registered in the German registry EAR under the WEEE-registration number DE45283704.

Disposal of used electrical and electronic appliances (intended for use in the countries of the European Union and other European countries with a separate collection system for these appliances).

The logo on the article or on its packaging points out that this article must not be treated as normal household waste but must be disposed to a recycling collection point for electronic and electrical waste equipment. By contributing to the correct disposal of this article you protect the environment and the health of your fellow men. Environment and health are threatened by inappropriate disposal.



Material recycling helps reduce the consumption of raw materials.

Additional information on recycling this article can be provided by your local community, municipal waste disposal facilities, or the store where you purchased the article.

Address:  
WiTec Wildanger Technik GmbH  
Königsbenden 12 / 28  
D-52249 Eschweiler

Important notice:

The reprint or reproduction, even of excerpts, and any commercial use, even in part, of this instruction manual require the written permission of WiTec Wildanger Technik GmbH.