

User's Manual

Car Manoeuvring Aid

51678



Illustration similar, may vary depending on model

Read and follow the operating instructions and safety information before using for the first time.

Technical changes reserved!

Illustrations, functional steps, and technical data may deviate insignificantly due to continuous further developments.

Updating the documentation

If you have suggestions for improvement or have found any irregularities, please contact us.



The information contained in this document may alter at any time without prior notice. No part of this document may be copied or otherwise duplicated without prior written consent. All rights reserved. WilTec Wildanger Technik GmbH cannot be held liable for any possible mistakes in this operating manual, nor in the diagrams and illustrations shown.

Although WilTec Wildanger Technik GmbH has made every possible effort to ensure that this operating manual is complete, accurate, and up-to-date, errors cannot be ruled out entirely.

If you have found an error or wish to suggest an improvement, we look forward to hearing from you. Send us an e-mail to:

service@wiltec.info

or use our contact form:

<https://www.wiltec.de/contacts/>

The most recent version of this manual in several languages can be found in our online shop:

<https://www.wiltec.de/docsearch>

Our postal address is:

WilTec Wildanger Technik GmbH
Königsbenden 12
52249 Eschweiler – Germany

To return your goods for exchange, repair, or other purposes, please use the following address. Attention! To allow for a trouble-free complaint or return, it is important to contact our customer service team before returning your goods.

Retourenabteilung
WilTec Wildanger Technik GmbH
Königsbenden 28
52249 Eschweiler – Germany

E-mail: **service@wiltec.info**

Tel: +49 2403 55592-0

Fax: +49 2403 55592-15



Introduction

Thank you for choosing to purchase this quality product. To minimise the risk of injury, we ask you to always take some basic safety precautions when using this product. Please read this operating manual carefully and make sure that you understand it.

Keep these operation instructions in a safe place.

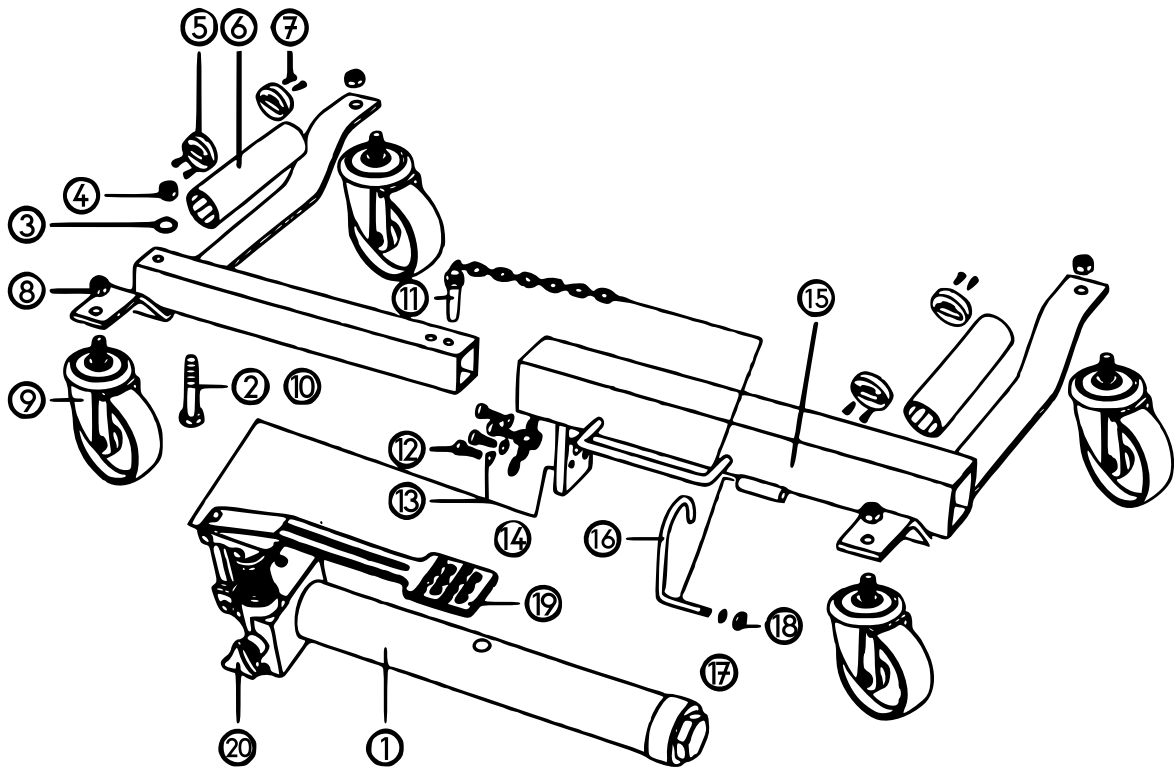
Safety instructions

- Never operate the manoeuvring aid on uneven or inclined surfaces. The dolly may only be used on a level surface. Otherwise, as soon as the tyre is lifted from the surface, the device could move unpredictably.
- Do not overload the manoeuvring aid more than its maximum charge load (680 kg per rack).
- Never start the engine of the vehicle and do not put it into operation during the use of the manoeuvring aid. The manoeuvring aid is only designed to move a vehicle by hand.
- The manoeuvring aid is not suitable for tyre whose width exceeds 30 cm.
- Do not push the manoeuvring aid over obstacles
- Make sure that, before using the device, the pin has been inserted. Remove the safety pin after work, then untighten the valve.

Operation

1. Place the manoeuvring aid onto the floor and push the pedal down to untighten the pedal lock. Remove the safety pin from the frame.
2. Before use, open the purge valve by turning the hand wheel counter-clockwise. Open the manoeuvring aid using the hand wheel until the tyre can be positioned on it. Position the tyre so that both rollers touch the tyre tread. To have optimal control over the manoeuvring aid, while it is expanded around the tyre, place your left hand on the left-hand axle and your right hand on the centre of the pedal. Close the purge valve by turning the hand wheel clockwise until it is in a snug-tight position. The jack may now be used.
3. Position the manoeuvring aid so that the unit is parallel to the sidewall of the tyre to be lifted. **Attention!** Leave approx. 2 cm between the tyre and the manoeuvring aid. If the unit is misaligned, the tyre might hit the axle and not the rollers, which will damage the jack.
4. To lift the tyre, flip the directional lever up. Place a foot on the pedal and depress it with smooth, even strokes. Apply the pedal until the tyre is lifted from the surface 3 cm or less. The lower the tyre is above the ground after lifting, the more stable the manoeuvring aid is. After lifting, make sure that the safety pin has been inserted before use. Repeat with the other tyres, then move the vehicle as required.
5. To release the jack, remove the safety pin and open the valve by slowly turning the hand wheel counter-clockwise. The manoeuvring aid can be removed when the rollers disengage from the tyre.

Exploded view and parts list



Nº	Name	Qty.	Nº	Name	Qty.
1	Piston assembly	1	11	Safety pin with chain	1
2	M16×115 bolt	1	12	M6×20 screw	4
3	Flat washer	1	13	Washer	4
4	M16 nut	1	14	Flat washer	4
5	Roller raceway	4	15	Right frame	1
6	Roller	2	16	Pedal locking hook	1
7	Raceway lock screw	8	17	Washer for hook	1
8	M12 lock nut	4	18	Nut for hook	1
9	Castor	4	19	Pedal	1
10	Left frame	1	20	Purge valve	1

Important Note:

Reproduction and any commercial use (of parts) of this operating manual, requires a written permission of WilTec Wildanger Technik GmbH.