

Operation Manual

Sand Filter

51792 (without pump), 51793 (with pump)



Illustration similar, may vary depending on model

Read and follow the operating instructions and safety information before using for the first time.

Technical changes reserved!

Due to further developments, illustrations, functioning steps, and technical data can differ insignificantly.

Updating the documentation

If you have suggestions for improvement or have found any irregularities, please contact us.



The information contained in this document may alter at any time without previous notice. It is prohibited to copy or spread any parts of this document in any way without prior written allowance. All rights reserved.

The WilTec Wildanger Technik GmbH cannot be held accountable for any possible mistakes in this operating manual, nor in the diagrams and figures shown.

Even though, the WilTec Wildanger Technik GmbH has undergone biggest possible efforts to ensure that the operating manual is complete, faultless, and up to date, mistakes cannot be entirely avoided.

If you should find a mistake or wish to make a suggestion for improvement, we look forward to hearing from you.

Send an e-mail to:

service@wiltec.info

or use our contact form:

<https://www.wiltec.de/contacts/>

The most recent version of this manual in various languages can be found in our online shop via:

<https://www.wiltec.de/docsearch>

Our postal address is:

WilTec Wildanger Technik GmbH
Königsbenden 12
52249 Eschweiler
Germany

To return orders for exchange, repair, or other purposes, please use the following address. Attention! To allow for a smooth execution of your complaint or return, it is important to contact our customer service team before returning the goods.

Returns Department
WilTec Wildanger Technik GmbH
Königsbenden 28
52249 Eschweiler

E-mail: **service@wiltec.info**

Tel: +49 2403 55592-0

Fax: +49 2403 55592-15



Introduction

Thank you for purchasing this quality product. **To minimise the risk of injury we urge that our clients take some basic safety precautions when using this device. Please read the operation instructions carefully and make sure you have understood its content.**

Keep these operation instructions safe.

Safety instructions

BEWARE:

The use of this device is allowed on standing water bodies, garden ponds, or swimming ponds and their surrounding areas only with fault current protection-switch with a triggering nominal current up to 30 mA (according to VDE 0100 article 702 and 738).

The device is not intended for use by persons (including children) with impaired or limited physical, sensory, and mental abilities or lack of experience and/or real knowledge, unless they are supervised by a person responsible for their safety or unless they follow the instructions made by this person on how to use the device correctly. Children should be supervised to make sure that they do not play with the device.

ATTENTION:

- Run a visual inspection of the device before every use. Do not use the device if the safety appliances are damaged or worn out. Never override safety regulations.
- Only use the device accordingly to the intended purpose stated in the instructions for use.
- You are responsible for the safety inside the working zone.
- If the cable or the plug is damaged due to external influences, the cable must not be repaired, but must be replaced with a new one. This work can only be carried out by an electrician.
- The voltage of 230 V AC indicated on the type plate of the device must correspond to the existent mains voltage.
- Never lift, carry, or fix the device by using the power cable.
- Make sure that the electrical plug connection is protected from flood and moisture.
- Before working on the pond filter, disconnect the device by pulling out the plug.
- Avoid exposing the device to a direct water jet or rain.
- The user is responsible for the compliance with local safety and installing regulations. Ask an electrician.
- Damage arising from flooded rooms caused by dysfunctions of the device must be avoided by means of the appropriate measures (e.g., installing an alarm system, a reserve pump).
- In case of malfunction, repair works can only be carried out by a qualified electrician.
- The device must not run dry or with an intake port completely closed. The manufacturer's warranty is no longer valid if the damage is caused by dry running.
- The device must not be used for drinking water circuits.
- The device must be installed out of water.
- You must make sure that the filter cannot fall into the water.
- You must make sure that the filter is not exposed to direct sunlight.
- The pond pressure filter must be horizontally fixed with screws on a suitable mounting place.
- The universal-hose stepped tails can be shortened according to the hose diameter if necessary.
- Attach hoses and hose clamps.

WARNING:

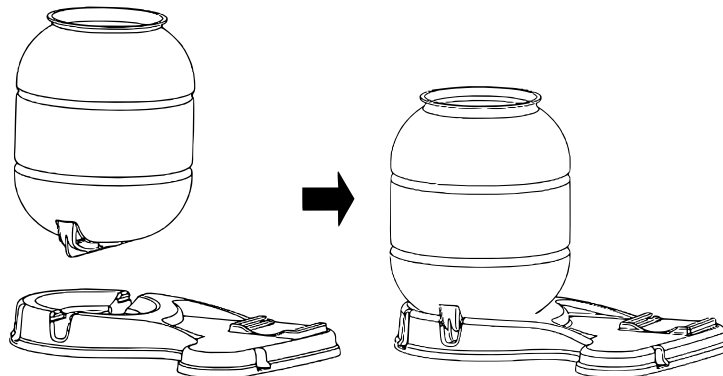
- **Carefully read all the safety guidelines and the instructions.** Non-compliance with the safety rules and regulations can lead to an electric shock, fire, and/or serious injury.
- Keep the instructions and the safety guidelines in a safe place in case you need them in the future.

Working principle

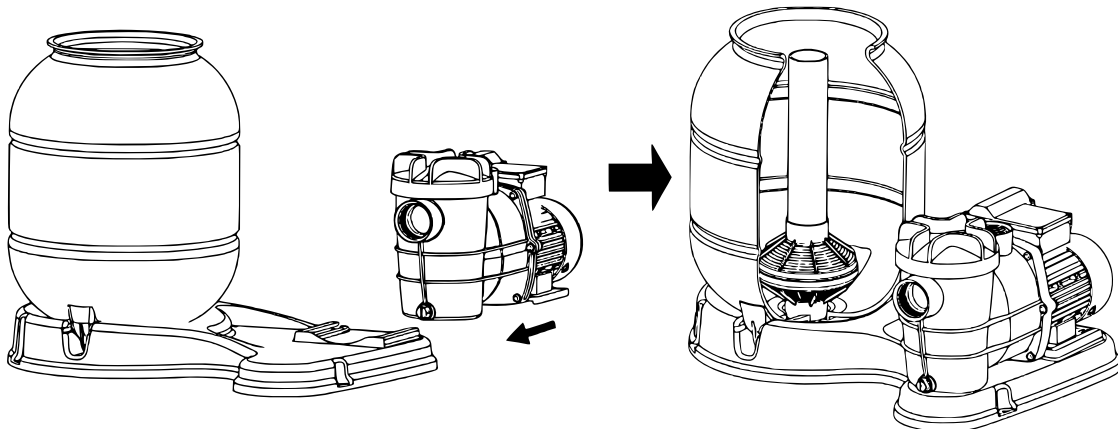
Incoming water from the piping system is automatically directed by the multiport valve to the top of the filter bed. As the water is pumped through the filter sand, dirt and debris are trapped by the filter bed and filtered out. The filtered water is returned from the bottom of the filter tank, through the multiport valve and back through the piping system.

How to install the filter tank

1. Mount the sand tank to sand filter support according to the instruction below.



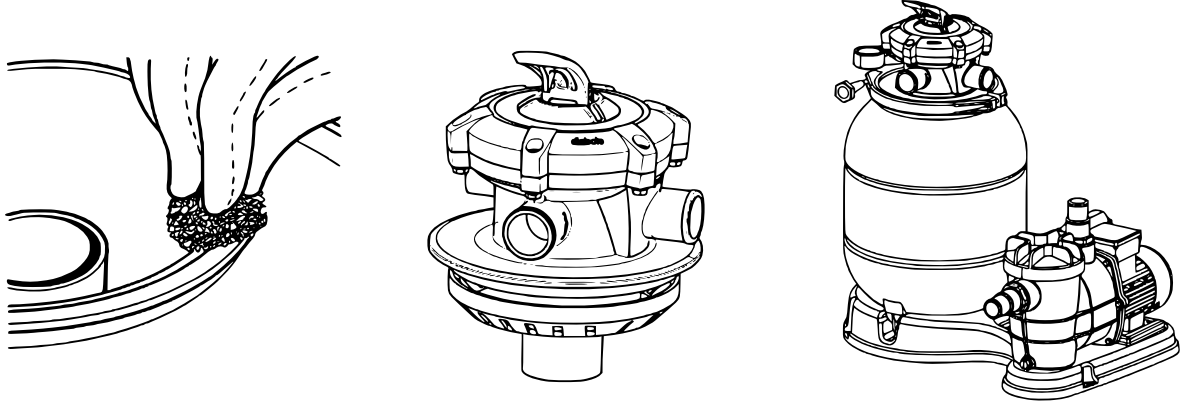
2. Insert the pump base to the sand filter support in the correct direction.



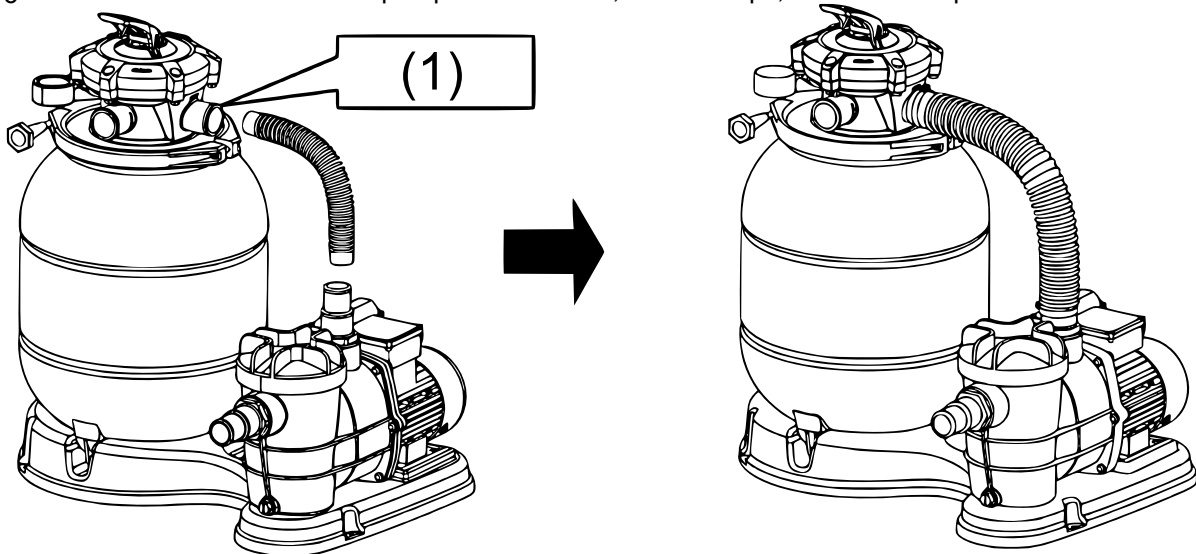
3. Insert the tube with the diffuser body inside the tank as the picture shows; then place the funnel on the tank mouth and pour quartz sand into the tank (sand weight 19 kg).



4. Take away the funnel, then carefully clean the tank neck and fix the valve with the O-ring through the flange clamp set. (The pump port on the valve needs to point towards the pump.)



5. Connect the sand tank to the pump with the hose, hose clamps, and hose adaptors.



(1) Pump port

Installation notes

- Make sure that the max. working pressure is not exceeded. Use a pressure control valve when the system has a booster pump.
- If the pump position is higher than the water level, a back-water control valve must be installed.
- If the pump position is lower than the water level, an isolation valve must be installed. It could stop the water return while the device is inspected.
- Make sure that the connecting adaptors and hose are as little bent as possible, connections should be shortened.
- Ensure that solvents are not excessively applied to fittings as these, touching the O-ring, might cause sealing problems.
- Do not over-tighten fittings or adapters

Commissioning

1. Inspect all connections to see if they are correct and secure.
2. Press the adjustment handle upwards and to BACKWASH position.
3. Install and start the pump accordingly to the instructions.
Note: All suction and discharge valves must be open when starting the system. Failure to do so could cause injuries. Make sure that the filter vessel is filled with water before starting up the pump, or the pump will be damaged.



4. Once water steadily flows out of the waste line, run the pump for at least another 2 min. The initial filter back-washing is recommended to remove any impurities out of the sand.
5. Set the adjustment lever to RINSE position. Start the pump and operate it until the water in the sight glass is clear (after about 1½ to 2 min).
6. Turn the pump off, set the adjustment handle to FILTER position, and restart the pump. The filter now operates in the normal filter mode, filtering particles from the pool water.

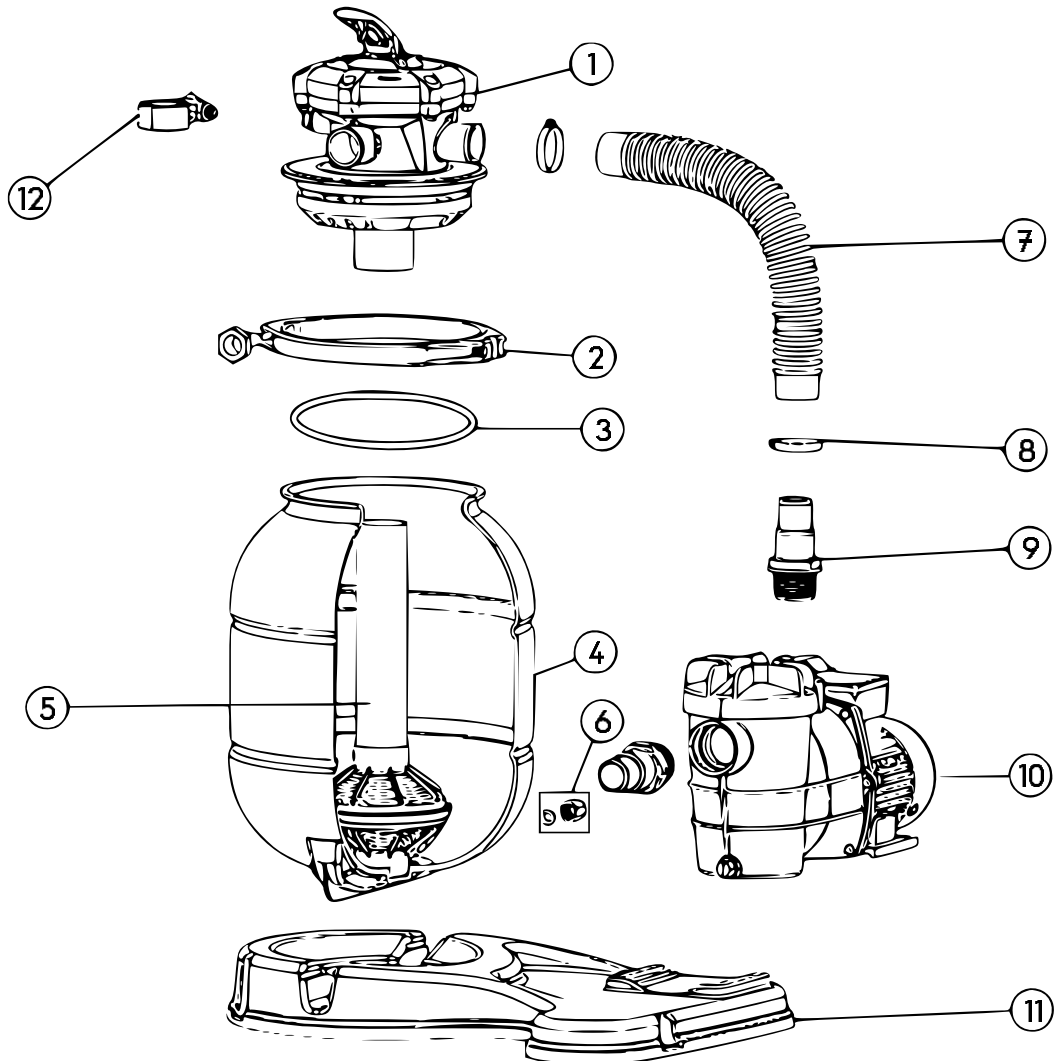
NOTES:

- Note the initial pressure gauge value when the filter is clean. It will vary depending upon the pump and pipes. As the filter removes dirt and impurities from the pool water, the accumulation in the filter will cause the pressure to rise and flow to diminish.
- When the pressure gauge value is 0.55–0.69 bar (8–10 psi) higher than the initial “clean” pressure noted, it is time for a filter backwash (cleaning).
- **IMPORTANT!** To prevent unnecessary strain on pipes and valves, always shut off the pump before changing the adjustment handle position.
- To prevent quick wear and tear or damage to the pump and filter and for proper operation of the system, regularly clean the pump filter and skimmer baskets.

Filter control valve functions

FILTER	Set valve to FILTER for normal filtering.
BACKWASH	For cleaning filter. When filter pressure gauge rises 0.55–0.69 bar (8–10 psi) above start-up (clean pressure), stop the pump, set the handle to BACKWASH. Start the pump and backwash until the water in the sight glass is clear (approx. 2 min or less depending on the dirt accumulation).
RINSE	After backwashing, with the pump switched off, set the valve to RINSE. Start the pump and operate it for about 2 min. This ensures that all dirty water from backwashing is rinsed out of the filter to waste, preventing a possible return to the pool. Stop the pump, set the valve to FILTER, and restart the pump for normal filtering.
WASTE	To bypass filter for draining or lowering water level and for suck heavy debris directly to waste.

Exploded view and parts list



Nº	Name
1	Filter head and multifunction valve
2	Clamp assembly
3	O-ring
4	Sand tank
5	Diffusor assembly
6	Drain plug
7	Hose
8	Hose clamp
9	Hose adaptor
10	Pump
11	Sand filter support
12	Gauge assembly



Troubleshooting

Problem	Cause	Solution
Filter leaks through the hose terminals	Improper connection between the terminals and the hoses	Insert hose terminals up until the bottom of housing and tighten clamps.
After the filter has started up, there is no flow in the feedback nozzle.	The valve is not on the filtration setting.	Disconnect filter and place valve on correct setting.
	Filter is above the level of the un-primed water.	Place filter in correct position and prime it.
	Suction cover or skimmer plug has been inserted.	Remove suction cover or skimmer plug.
Intermittent operation	Low water level on skimmer	Fill pool and prime filter.
	The filter is not primed.	Prime filter.
Low flow rate of filter	Due to use, the filter is dirty.	Perform backwash.
	The filter is not primed.	Prime filter.
Water comes out through the filter opening.	Dirty connection between the valve and the filter	Clean sand from opening, properly insert coupling on valve and firmly tighten metal band.
	Lose metal band	
The filter valve leaks through the drain terminal.	Inner coupling damaged due to improper use of chemical product.	Change top valve cover. Do not put chemical products in preliminary filtration skimmer basket.
	Valve head broken due to improper use (over-tightening).	Valve head broken due to improper use. Change valve head. Do not over-tighten!
Motor will not start up, there is not any noise or vibration.	No current in the electrical line.	Check that there is current in electrical line.
Motor will not start up, a buzzing sound can be heard.	Motor damaged	Contact a qualified person.
Water leak	Leaking spot	Check hose clamps.
		If leak is between the pump and the motor, contact qualified person.

Disposal regulations

EU guidelines regarding the disposal of scrap electric appliances (WEEE, 2012/19/EU) were implemented in the law related to electrical and electronic equipment and appliances.

All WiTec electric devices that fall under the WEEE regulations are labelled with the crossed-out wheeled waste bin logo. This logo indicates that this electric equipment must not be disposed with the domestic waste.

The company WiTec Technik GmbH has been registered in the German registry EAR under the WEEE-registration number DE45283704.

Disposal of used electrical and electronic appliances (intended for use in the countries of the European Union and other European countries with a separate collection system for these appliances).

The logo on the article or on its packaging points out that this article must not be treated as normal household waste but must be disposed to a recycling collection point for electronic and electrical waste equipment. By contributing to the correct disposal of this article you protect the environment and the health of your fellow men. Environment and health are threatened by inappropriate disposal.



Material recycling helps reduce the consumption of raw materials.

Additional information on recycling this article can be provided by your local community, municipal waste disposal facilities, or the store where you purchased the article.

Address:
WiTec Wildanger Technik GmbH
Königsbenden 12 / 28
D-52249 Eschweiler

Important notice:

The reprint or reproduction, even of excerpts, and any commercial use, even in part, of this instruction manual require the written permission of WiTec Wildanger Technik GmbH.