

# Instruction manual

## Floating Pond Skimmer CSP-250

52371



Illustration similar, may vary depending on model

Please read and follow the operating instructions and safety information prior to initial operation.

Technical changes reserved!

Illustrations, functional steps and technical data may deviate insignificantly due to continuous further developments.



The information contained in this document may alter at any time without prior notice. No part of this document may be copied or otherwise duplicated without prior written consent. All rights reserved.

WilTec Wildanger Technik GmbH cannot be held liable for any possible mistakes in this operating manual, nor in the diagrams and illustrations shown.

Although WilTec Wildanger Technik GmbH has made every possible effort to ensure that this operating manual is complete, accurate and up-to-date, errors cannot be ruled out entirely.

If you have found an error or wish to suggest an improvement, we look forward to hearing from you.

Send us an e-mail to:

[service@wiltec.info](mailto:service@wiltec.info)

or use our contact form:

<https://www.wiltec.de/contacts/>

The most recent version of this manual in several languages can be found in our online shop:

<https://www.wiltec.de/docsearch>

Our postal address is:

WilTec Wildanger Technik GmbH  
Königsbenden 12  
52249 Eschweiler Germany

To return your goods for exchange, repair or other purposes, please use the following address. Attention! To allow for a trouble-free complaint or return, it is important to contact our customer service team before returning your goods.

Retourenabteilung  
WilTec Wildanger Technik GmbH  
Königsbenden 28  
52249 Eschweiler Germany

E-mail: **service@wiltec.info**

Phone: +49 2403 55592-0

Fax: (+49 2403 55592-15)



## Introduction

Thank you for choosing to purchase this quality product. To minimise the risk of injury, we ask you to always take some basic safety precautions when using this product. Please read this operating manual carefully and make sure that you understand it.

Keep these operation instructions in a safe place.

**Warning!** Before using the device for the first time, read the entire manual and familiarize yourself with the device. For proper and safe use, you must observe the following:

- This device may only be used by persons with reduced physical, sensory, or mental abilities or a lack of experience or knowledge in case a person familiar with the device and responsible for their safety has instructed and supervises them.
- Children and young persons under the age of 16 must not use the device and should be supervised when they are near it to ensure that they do not play with it.
- If the device is to be given another person, always hand over the manual together with the device.
- On reception, check the device for damages. If the device is damaged, contact the vendor.

## Range of application

- This product is suitable for water temperatures between 4 °C and 35 °C.
- This product can be used in ponds or pools with a high water level. The water level must not fall below 35 cm.

## Safety instructions

- If you encounter problems or difficulties, contact a qualified person for safety reasons.
- Before touching the water surface, disconnect all devices in the water from the mains.
- The product may only be plugged in a socket equipped with earth leakage protection. The socket must have been installed in accordance with the regulations of the respective country (VDE, EN, IEC). Make sure that the protective conductor is safely located towards the product.
- Never use safety material, adaptors, extension or connection conductors without earth leakage protection.
- Make sure that the product is equipped with an earth leakage protection (FI or FCD) whose leakage current does not exceed 30 mA.
- The electric installation of the garden pond must be in accordance with the national and supra-national installation regulations.
- Compare the existing mains voltage (V) and frequency (Hz) with the specifications on the nameplate of the device. They must match.
- The product may only be operated when there is no person or animal in the water.
- Never pull the power cable to carry, pull, or suspend the device.
- The power plug and connections must always stay dry.
- The power cable or the hosing being damaged, the product must not be put into operation.
- If the power cable is damaged, it must immediately be replaced by a qualified person. Operating the device with the power cable being damaged increases the risk of injury caused e.g., by an electric shock or fire.
- Only use the product to pump water. It must not be used to pump other liquids.
- Never let the product run without water (dry running); it would be damaged.
- **Note!** If the water pump is overcharged (e.g., by a stuck rotor), the anti-bloc function installed inside the device automatically switches it off. After repairing the fault, the product is re-switched on and re-operated.

## Installing the product

- Before installing, carefully read the safety instructions.
- Connect all parts of the product and check them for defects or lacks.
- Attach a cord to the bottom part of the product.
- Put the product into the water and fill it with the water.
- Find a suitable location and adapt the cord length.
- Attach the other end of the rope to one of the fixing bars.
- Firmly position the fixing bar into the muddy zone outside the pond so that the device cannot leave its operation zone with the driving-away water.
- Connect the device to the mains and put it into operation.

## Features

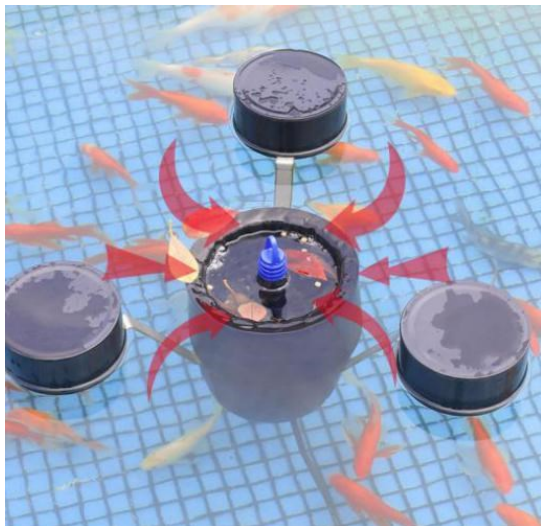
1. The device has two main features: The operation modes “skimmer” and “fountain” can be activated by turning the reversing valve. With the reversing valve being in the “skimmer” position, the device operates as a skimmer (see Fig. 1), with the reversing valve being in the “fountain” position, the device operates as a fountain (see Fig. 2).
2. With the installed water pump operating, the water level inside the filter basket, small contaminants are absorbed by the filter sponge, and the filtered water flows back into the pond.
3. The floating elements make for the device floating on top of the water and it staying at its operating position so that it does not sink to the ground.
4. Installed filter basket construction, large skimming capacity, long maintenance period
5. Equipped with accessories for fountain operation. The device not being used as fountain, the fountain accessories must not be installed.



Figure 1



Figure 2



Skimmer mode



Fountain mode

### Technical specifications

|                                   |                 |
|-----------------------------------|-----------------|
| <b>Voltage (V)</b>                | 220–240         |
| <b>Frequency (Hz)</b>             | 50              |
| <b>Power consumption (W)</b>      | 45              |
| <b>Max. flow rate (l/h)</b>       | 2500            |
| <b>Max. lifting height (m)</b>    | 2.7             |
| <b>Required water level (cm)</b>  | ≥ 35            |
| <b>Filter basket capacity (l)</b> | 1.2             |
| <b>Fountain type</b>              | 3-type fountain |

### Operation modes

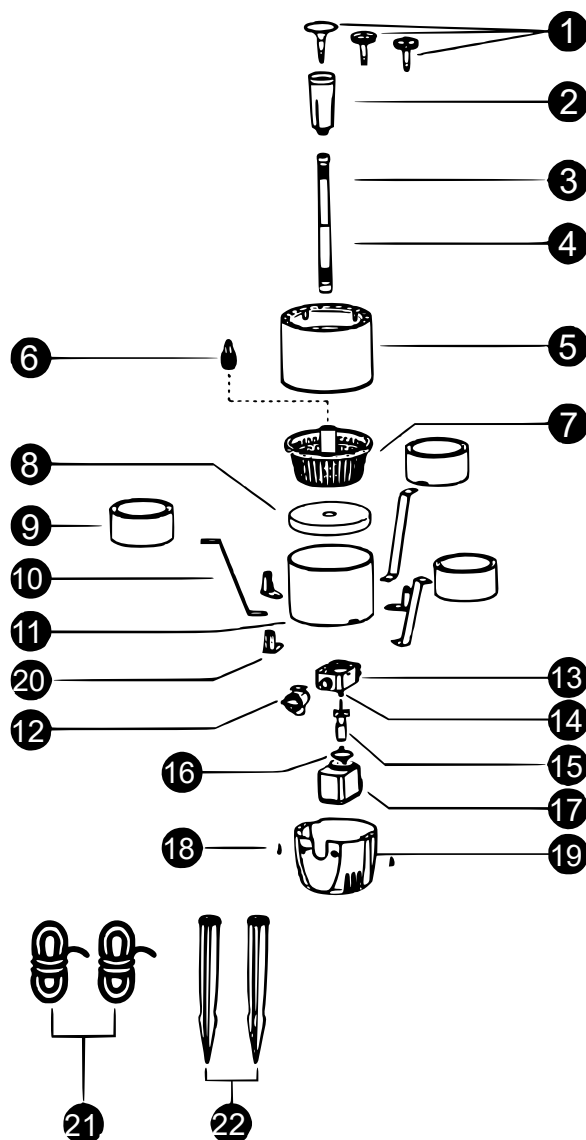
1. “Fountain” mode is activated with the fountain unit **(1–4)** being installed and the reversing valve **(12)** being in “fountain” position.
2. “Skimmer” mode is activated with the filter basket handle **(6)** being installed and the reversing valve **(12)** being in “skimmer” position.

### Winter storage

- Take out the device of the water.
- Thoroughly clean the device.
- Check the device and/or power cable for damages.
- The device must be stored in a frost-free place and in a container with as much water as possible.

**Note:** Never immerse the power plug into the water!

Exploded view and parts list



| No | Name                                | No | Name                               |
|----|-------------------------------------|----|------------------------------------|
| 1  | 3-type fountain head                | 12 | Reversing valve                    |
| 2  | Fountain intake                     | 13 | Rotor chamber                      |
| 3  | Extension tube                      | 14 | Ball bearing                       |
| 4  | Connection tube                     | 15 | Rotor parts                        |
| 5  | Main floating elements              | 16 | O-ring                             |
| 6  | Filter basket handle                | 17 | Pump motor                         |
| 7  | Filter basket                       | 18 | Screw                              |
| 8  | Filter sponge                       | 19 | Rear cover                         |
| 9  | Closed floating element             | 20 | Connection points for illumination |
| 10 | Connection bar for floating element | 21 | Cord                               |
| 11 | Body                                | 22 | Fixing bar                         |



## Cleaning and maintenance

1. Regularly clean the filter basket to avoid that too much waste affects the skimmer efficiency.
2. Regularly clean the filter sponge in the water. Do not shake it vigorously and do not use any chemical cleaning products.
3. With less water than normally entering the device, disassemble it by removing the rear cover. Remove all mud and other obstructing material accumulated on the rotor unit.
4. If the device is visibly cracked or worn, repair or replace it in time to ensure your own safety and normal operation. If maintenance work risks take a lot of time or if several parts must be replaced, contact a qualified person.

## Trouble shooting

| Problem                 | Cause                    | Solution                               |
|-------------------------|--------------------------|--|
| Device not operable     | Lack of power            | Check power source or socket.          |
|                         | Defective pump           | Check pump.                            |
| Water outlet decreases  | Fountain head too loose  | Adjust fountain head.                  |
|                         | Sponge too dirty         | Clean sponge.                          |
|                         | Pipes clogged            | Clean pipes.                           |
| "Skimmer" mode affected | Too low water level      | Water level must not fall below 35 cm. |
|                         | Filter basket overfilled | Empty filter basket.                   |



---

## Regulations for waste disposal

The Waste Electrical and Electronic Equipment Directive (WEEE Directive, 2012/19/EU) of the EU was implemented in the German law related to electrical and electronic equipment and appliances.

All WilTec electric devices that fall under the WEEE directive are labelled with the symbol of a crossed-out wheeled rubbish bin. This symbol indicates that this electric device must not be disposed of with the domestic waste.

WilTec Technik GmbH is registered with the German registration authority EAR (Stiftung Elektro-Altgeräte Register) under the WEEE-registration number DE45283704.

Disposal of used electrical and electronic devices (intended for use in the countries of the European Union and other European countries with a separate waste collection system for these devices).

The symbol on the packaging or the product itself indicates that this product must not be treated as normal domestic waste but must be disposed of at a recycling collection station for electrical and electronic waste.

By disposing of this product correctly, you contribute to the protection of the environment and the health of your fellow people. Inappropriate disposal threatens the environment and health.

Material recycling helps to reduce the consumption of raw materials.

Additional information about the recycling of this product can be provided by your local commune, the municipal waste disposal facilities, or the store where you purchased the product.

Address:  
WilTec Wildanger Technik GmbH  
Königsbenden 12 / 28  
52249 Eschweiler Germany

### Important Note:

Reproduction and any commercial use (of parts) of this operating manual, requires a written permission of WilTec Wildanger Technik GmbH.