

Operation Manual

SuperECO Pond Pump CET-26000

55550



Illustration similar, may vary depending on model

Read and follow the operating instructions and safety information before using for the first time.

Technical changes reserved!

Due to further developments, illustrations, functioning steps, and technical data can differ insignificantly.

Updating the documentation

If you have suggestions for improvement or have found any irregularities, please contact us.



The information contained in this document may alter at any time without previous notice. It is prohibited to copy or spread any parts of this document in any way without prior written allowance. All rights reserved.

The WilTec Wildanger Technik GmbH cannot be held accountable for any possible mistakes in this operating manual, nor in the diagrams and figures shown.

Even though, the WilTec Wildanger Technik GmbH has undergone biggest possible efforts to ensure that the operating manual is complete, faultless, and up to date, mistakes cannot be entirely avoided.

If you should find a mistake or wish to make a suggestion for improvement, we look forward to hearing from you.

Send an e-mail to:

service@wiltec.info

or use our contact form:

<https://www.wiltec.de/contacts/>

The most recent version of this manual in various languages can be found in our online shop via:

<https://www.wiltec.de/docsearch>

Our postal address is:

WilTec Wildanger Technik GmbH
Königsbenden 12
52249 Eschweiler
Germany

To return orders for exchange, repair, or other purposes, please use the following address. Attention! To allow for a smooth execution of your complaint or return, it is important to contact our customer service team before returning the goods.

Returns Department
WilTec Wildanger Technik GmbH
Königsbenden 28
52249 Eschweiler

E-mail: **service@wiltec.info**

Tel: +49 2403 55592-0

Fax: +49 2403 55592-15



Introduction

Thank you for purchasing this quality product. **To minimise the risk of injury we urge that our clients take some basic safety precautions when using this device. Please read the operation instructions carefully and make sure you have understood its content.**

Keep these operation instructions safe.

Unpacking

Inform your vendor in case any piece should be damaged.

Caution

- For your own safety, contact an electrical professional in case of questions and problems.
- Do not connect the device to the power supply before the all parts have been installed.
- Only connect the pump to a (earthed) shockproof socket. This type of socket must comply with the respective national guidelines (VDE, EN, IEC etc.). Make sure that the neutral conductor (PE conductor; **protected earth**) leads continuously to the pump.
- Make sure that the voltage of the pump and that of the power supply match.
- Electrical installations in garden ponds must comply with national and supranational regulations.
- Only operate the pump when nobody is in the water.
- Do not carry or pull the pump by the power cord; the cable should neither overheat nor touch sharp edges.
- The pump must not be put into operation if the cable or the housing is damaged.
- Only pump water with this pump.
- **Attention:** The pump switches off automatically in the event of overvoltage or dry running without water.
- The controller is not designed to be waterproof. It must therefore be kept in a dry and ventilated place.

Application

For garden ponds, rockeries, aquariums with fish and other sea animals

Features

- High flow rate, 10 different setting levels
- Robust filter housing made of stainless steel
- Special housing that prevents clogging
- New energy-efficient frequency conversion technology
- Suitable for both freshwater and saltwater aquarium
- Ceramic shaft, for a long service life
- Automatic dry run detection, with alarm function

Installation

1. Notify your vendor immediately if there are external damages.
2. Compare the line voltage (V) and frequency (Hz) of your electrical circuit with the data on the model plate; these data must agree.
3. When connecting the pipe, drainage air in the pipe as far as possible. (**Caution:** There must be no air in the pipes; otherwise, the dry run protection might be activated.)
4. **Attention:** The pump must be at a position that is at least 20 cm below the water level; the pump must continuously be surrounded completely by water.

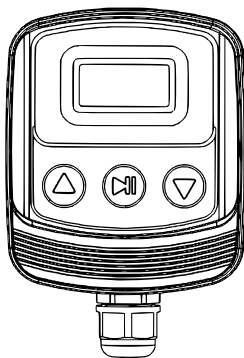


5. Do not place the pump directly in the pond floor mud, place it on a raised surface.
6. Connect the pump with the controller of four core wire (**Fig. 1, 1**), lock the nut (**Fig. 1, 2**).



7. Connect the power supply of the controller.



Controller operation instructions



1. On/off



Plug in the device and touch  to switch the pump on and off. If the device is not operated for a long time, please unplug it.

2. Flow rate adjusting



Press  or  to adjust the flow rate; the device disposes of 10 levels, and the display screen will show "SP01"–"SP10." For detailed information please refer to the parameter list:

Power supply	Level	Power (W)	Flow rate (1/h)	Flow head (m)
220–240 V/50 Hz	1	80	13,000	2.8
	2	100	14,000	3.4
	3	130	15,500	4.0
	4	160	17,000	4.5
	5	200	18,000	5.1
	6	240	19,000	5.8
	7	285	20,500	6.5
	8	335	22,000	7.2
	9	380	23,500	7.8
	10	450	26,000	8.5

3. Feeding mode

Press  for 3 s to enter the time delay start mode, and the screen will show "FD10." The device will start to work after 10 min. Again press  for 3 s to quit the feeding mode.

4. LOCK function

Long press  to lock the keys, and the screen will show "LOC." Long press  to unlock the keys.



5. Automatic memory function

When the controller powers off accidentally, the device will save the last working condition automatically, and will return to these conditions after the device will have been re-powered on. Thus, the settings will be saved when there is a power failure e. g.

6. Alarm function

The pump will automatically stop working if running without water more than 30 s, then re-start after 3 s, repeating that 5 times and then power off permanently, reporting the error “ER03”; when the pump automatically stops working in case it is blocked, the display screen will show “ER02.” The pump will automatically re-start after the error will have been repaired.

7. Instruction code definition and trouble shooting

Code	Definition	Status	Trouble shooting
P000	Power	Normal	—
SP01–10	Flow rate level	Normal	
FD10–01	Feeding mode	Normal	
LOC	Lock	Normal	
ER01	Overvoltage or undervoltage	Abnormal	Check the input voltage.
ER02	Pump lock protection	Abnormal	Check the pump whether it is stuck.
ER03	Pump idling protection	Abnormal	1. Check the pump whether it works without water. 2. Check whether there is air in the pipe.
ER04	Overheating	Abnormal	Clean the pump.
ER05	Short-circuit	Abnormal	Check the controller.

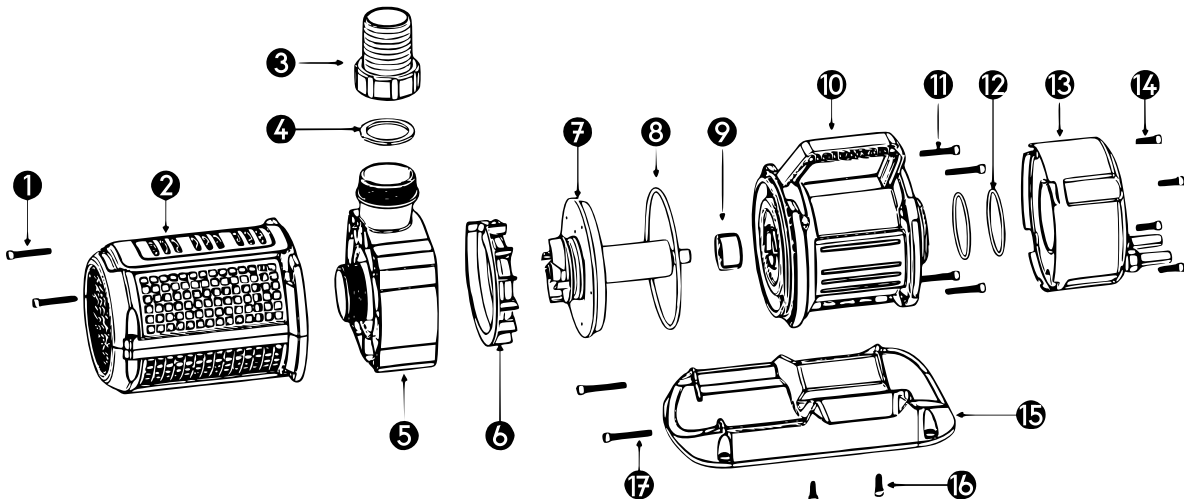
Maintenance and cleaning

Before any maintenance, cut off the power supply. After a certain time, if the pump has operated continuously, there will be much rubbish on the rotor part. If you do not clean regularly, this will not only affect the normal operation, but can also damage the pump itself. So, you need to clean the rotor parts regularly. Proceed as follows:



1. Use a hexagonal screwdriver to screw off the 4 screws on the filter cover (see Fig. 1 and 2). Screw off the base plate (see Fig. 2) and take down the filter cover and base plate. Fig. 3 shows the pump after this step.
 2. Use a hexagonal screwdriver to screw off the 4 screws on the impeller chamber (see Fig. 4); take off the impeller chamber. Fig. 5 shows the pump after this step.
 3. Take off the rotor, clean or replace it.
- If the pump is not used for a long time, please take out the pump from the water, let it run in clean water for a moment, and then clean the inner part. Dry all parts before stocking and stock it at a secure place.
 - When the temperature is lower than 0 °C, please take out the pump from water immediately to prevent any freezing damages.

Explosion view and part list



No	Name	No	Name	No	Name
1	Screw M6×40	7	Pump rotor	13	Back cover
2	Filter basket	8	Gasket	14	Screw M6×20
3	Outlet	9	Ceramic bearing	15	Base plate
4	O-ring	10	Body	16	Screw M6×40
5	Impeller chamber	11	Screw M6×35		
6	Front impeller chamber	12	O-ring		

Disposal regulations

EU guidelines regarding the disposal of scrap electric appliances (WEEE, 2012/19/EU) were implemented in the law related to electrical and electronic equipment and appliances.

All WiITec electric devices that fall under the WEEE regulations are labelled with the crossed-out wheeled waste bin logo. This logo indicates that this electric equipment must not be disposed with the domestic waste.

The company WiITec Technik GmbH has been registered in the German registry EAR under the WEEE-registration number DE45283704.

Disposal of used electrical and electronic appliances (intended for use in the countries of the European Union and other European countries with a separate collection system for these appliances).

The logo on the article or on its packaging points out that this article must not be treated as normal household waste but must be disposed to a recycling collection point for electronic and electrical waste equipment. By contributing to the correct disposal of this article you protect the environment and the health of your fellow men. Environment and health are threatened by inappropriate disposal.



Material recycling helps reduce the consumption of raw materials.

Additional information on recycling this article can be provided by your local community, municipal waste disposal facilities, or the store where you purchased the article.

Address:
 WiITec Wildanger Technik GmbH
 Königsbenden 12 / 28
 D-52249 Eschweiler

Important notice:

The reprint or reproduction, even of excerpts, and any commercial use, even in part, of this instruction manual require the written permission of WiITec Wildanger Technik GmbH.