

# Instruction manual

## Spreader GT1507

60910

**XPO** <sup>the</sup> **tool**  
experts



Illustration similar, may vary depending on model

Please read and follow the operating instructions and safety information prior to initial operation.

Technical changes reserved!

Illustrations, functional steps, and technical data may deviate insignificantly due to continuous further developments.



The information contained in this document may alter at any time without prior notice. No part of this document may be copied or otherwise duplicated without prior written consent. All rights reserved. WilTec Wildanger Technik GmbH cannot be held liable for any possible mistakes in this operating manual, nor in the diagrams and illustrations shown.

Although WilTec Wildanger Technik GmbH has made every possible effort to ensure that this operating manual is complete, accurate, and up-to-date, errors cannot be ruled out entirely.

If you have found an error or wish to suggest an improvement, we look forward to hearing from you. Send us an e-mail to:

[service@wiltec.info](mailto:service@wiltec.info)

or use our contact form:

<https://www.wiltec.de/contacts/>

The most recent version of this manual in several languages can be found in our online shop:

<https://www.wiltec.de/docsearch>

Our postal address is:

WilTec Wildanger Technik GmbH  
Königsbenden 12  
52249 Eschweiler Germany

To return your goods for exchange, repair, or other purposes, please use the following address. Attention! To allow for a trouble-free complaint or return, it is important to contact our customer service team before returning your goods.

Retourenabteilung  
WilTec Wildanger Technik GmbH  
Königsbenden 28  
52249 Eschweiler Germany

E-mail: **service@wiltec.info**  
Phone: +49 2403 55592-0  
Fax: (+49 2403 55592-15)



## Introduction

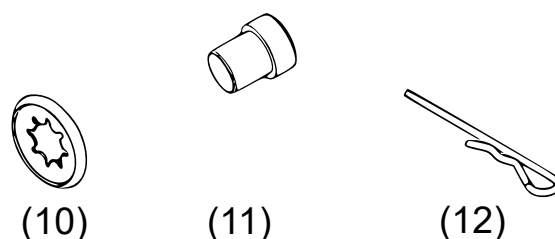
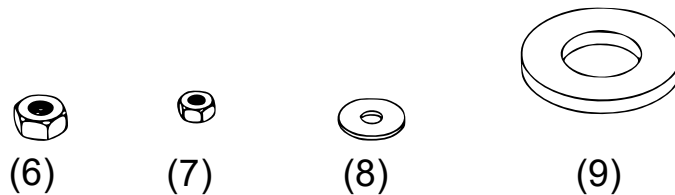
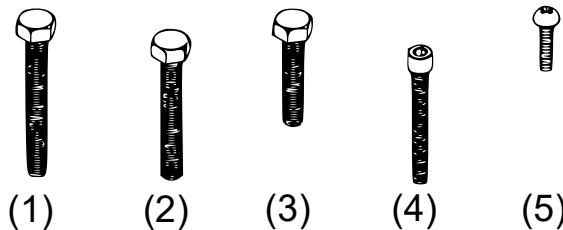
Thank you for choosing to purchase this quality product. To minimise the risk of injury, we ask you to always take some basic safety precautions when using this product. Please read this operating manual carefully and make sure that you understand it. Keep these operation instructions in a safe place.

## Safety instructions

### Before assembly read the safety instructions and the notes!

- Read the safety instructions for tractor owners and tractors. Familiarise yourself with the operation of your tractor before using the spreader.
- Read all the information and safety instructions for handling the chemicals to be broadcast.
- Always wear eye and hand protection while handling and broadcasting lawn or garden chemicals.
- Never operate the tractor or spreader without wearing solid shoes, and do not let anyone ride or sit on the spreader.
- Never let children operate the tractor or spreader, and do not allow any adult to operate them without prior instruction.
- Always begin with the first (lowest) gear and with a low rotation and gradually increase the rotation if conditions allow to do so.
- When towing the spreader, do not get too close to a beck or ditch and look out for potholes and other dangers that might lead to loss of control of the spreader or tractor.
- Before operating a vehicle on a slope (hill), you must respect the safety instructions of the user's manual of the vehicle concerning safety on slopes. Do not drive on steep slopes!

**Open the packaging and pouch, remove all parts and check for completeness.**

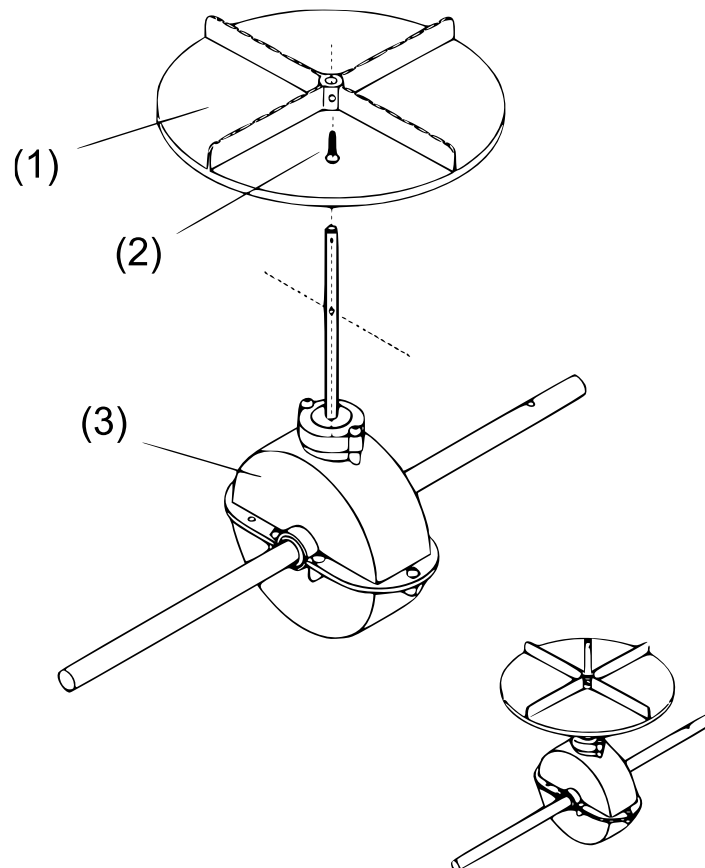


Nº	Name	Qty.	Nº	Name	Qty.
1	Bolt M6×60	2	7	Counter nut M5	1
2	Bolt M6×40	8	8	Big washer ø 6	4
3	Bolt M6×35	4	9	Washer ø 16	1
4	Hexagon socket screw	1	10	End cap	2
5	Fillister head screw M4×20	1	11	Inner axle-bearing	2
6	Counter nut M6	12	12	R pin	1

## Assembly instructions

### 1<sup>st</sup> step

1. Mount the driving wheel (1) onto the drive and axle construction (3).
2. Insert the M4×20 fillister head screw (2) through the driving wheel and axle.

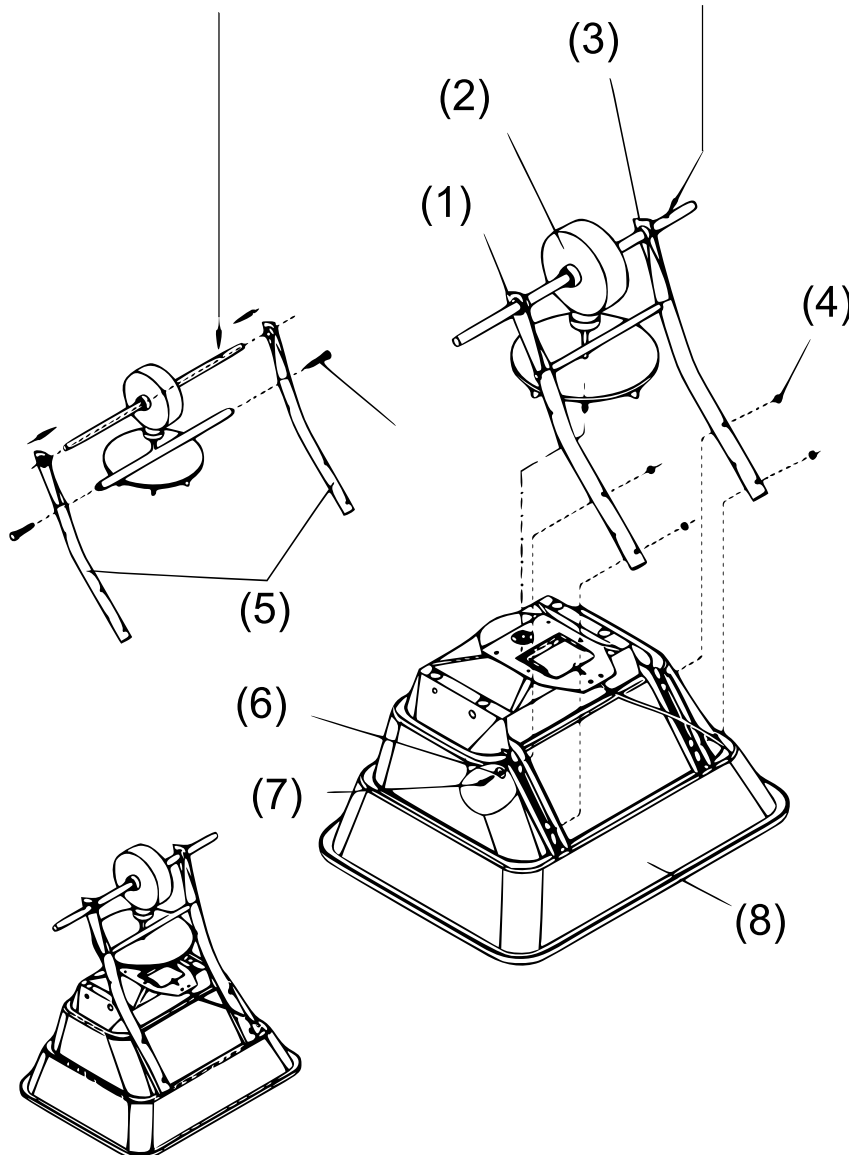


2<sup>nd</sup> step

1. Fix the wheel frame construction on either side of the driving axle and connecting rod.
2. Insert two M6×40 screws through the wheel frame into the connecting rod. Make sure that the hole on the driving axle is on the right as shown.
3. Fix the mounting frame and foot to the hopper with M6×40 screws, M6 counter nuts and big washers  $\varnothing 6$ .

**Note:** The screws and nuts do not need to be tightened yet.

Note that the bore on the driving axle must be on this side when assembling.

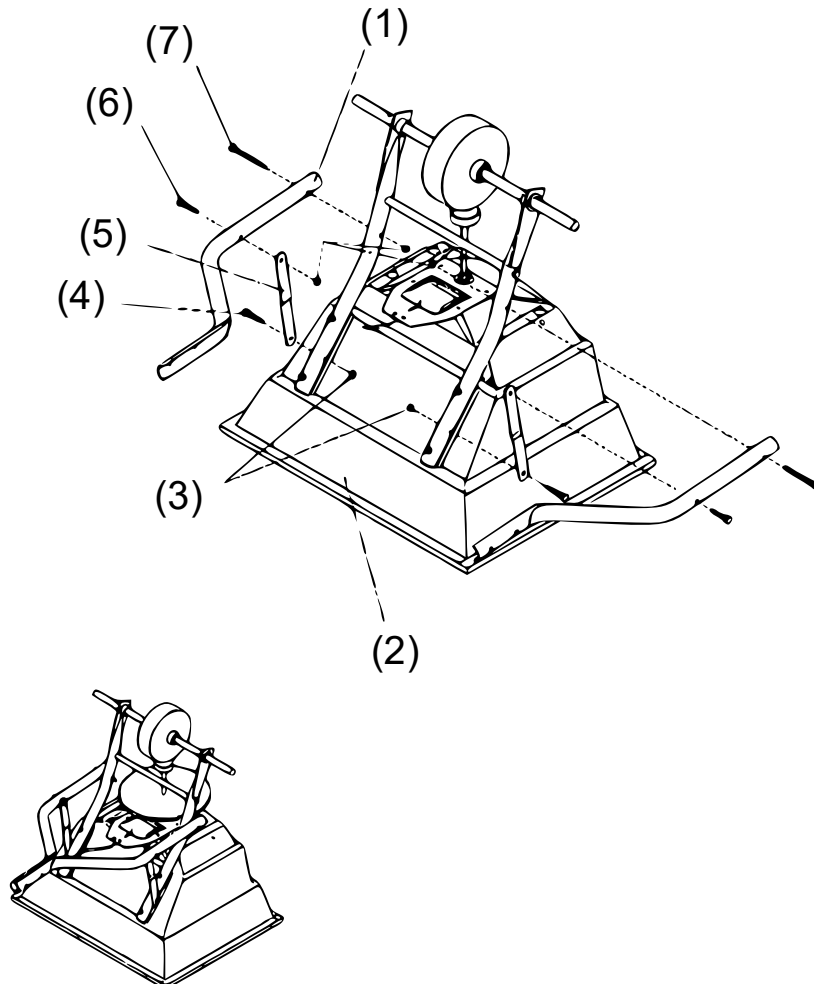


Nº	Name	Nº	Name
1	Right wheel frame assembly	5	Wheel frame assembly
2	Driving and axle	6	Big washer $\varnothing 6$
3	Left wheel frame assembly	7	Bolt M6×40
4	Counter nut M6	8	Hopper

3<sup>rd</sup> step

1. Mount one end of the connecting plate (5) to the wheel frame with a M6×35 screw (4) and M6 counter nut (3).
2. Then mount the connecting rod to the wheel frame with a M6×60 screw (7) and M6 counter nut and fix the connecting plate to the connecting rod (1) with a M6×35 screw (6).

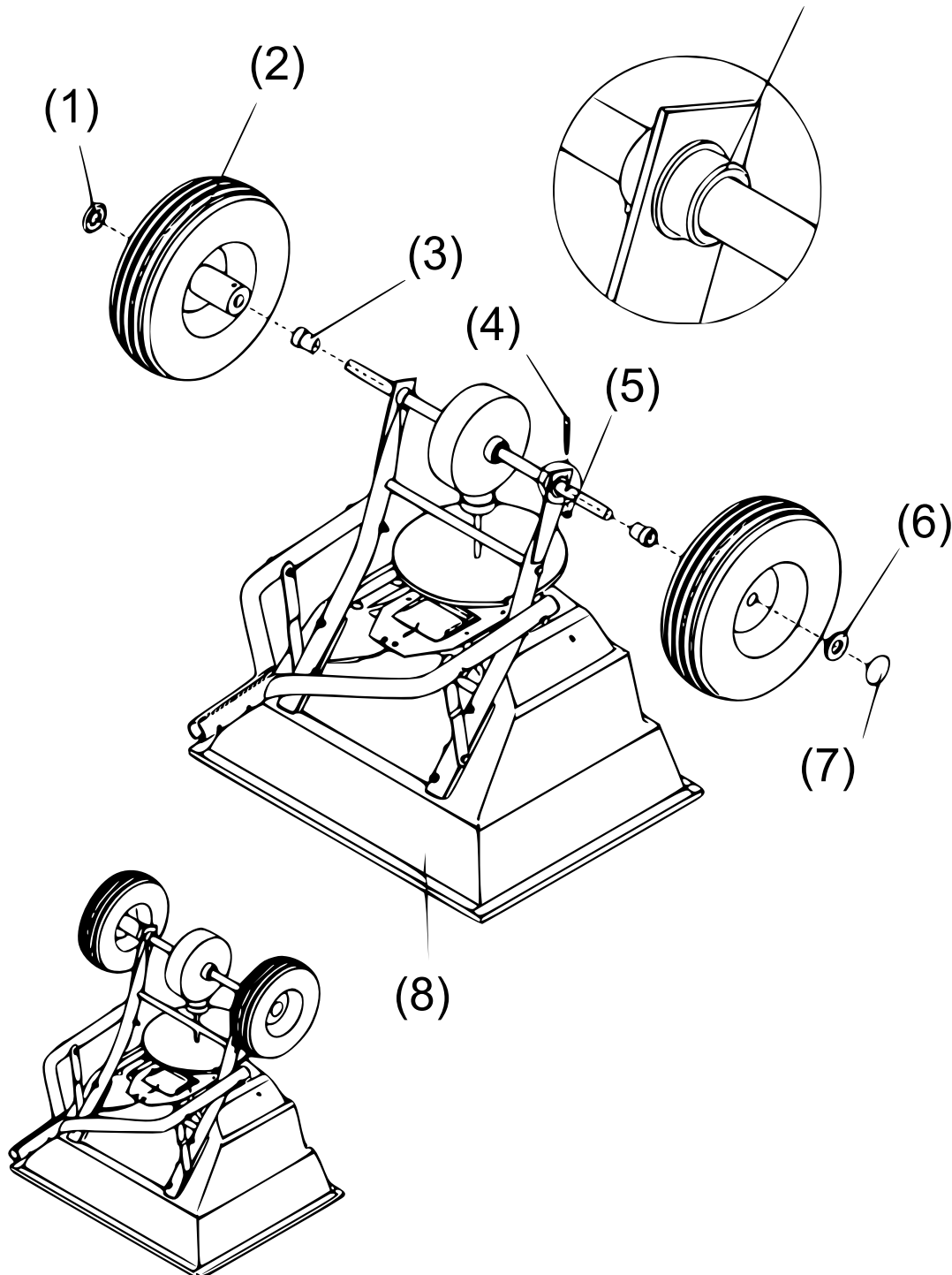
**Note:** The screws and nuts do not need to be tightened.



4<sup>th</sup> step

1. Set in the inner axle box into the outer axle box, making sure that they are securely seated.
2. Mount the right wheel construction to the right axle with the M5×45 hexagon socket screw and M5 counter nut, then mount the end cap on the right axle with a wooden or rubber mallet.
3. Now mount the left wheel construction to the left axle inserting a  $\varnothing 16$  washer, and mount the end cap on the left axle with a wooden or rubber mallet.

Set the inner axle box into the outer axle box, making sure that they are securely seated.

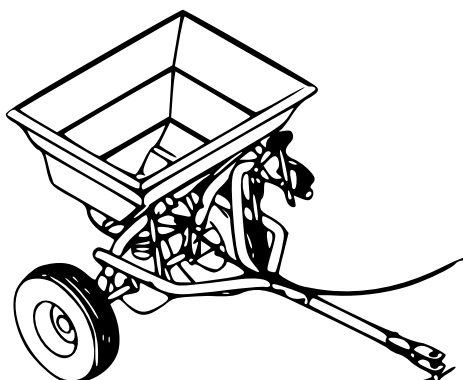
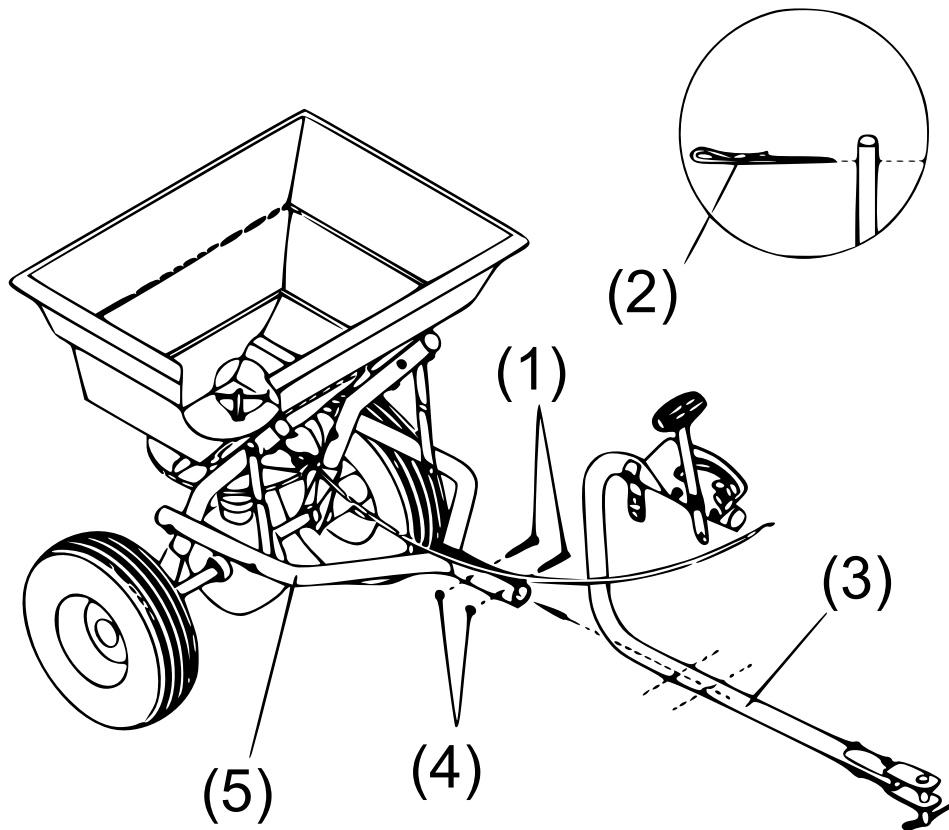




No	Name	No	Name
1	Axle end cap	5	Counter nut M5
2	Pneumatic tyre	6	Washer
3	Inner axle bearing	7	Axle end cap
4	Hexagon socket screw M×45	8	Hopper

5<sup>th</sup> step

1. Assemble the hopper part (5) and tube part (3) construction with a M6×40 screw (1) and M6 counter nut (4).
2. Now tighten all screws and bolts mounted from the first step on, but do not tighten them too strongly, then insert the R pin (2) to the front end for securing.

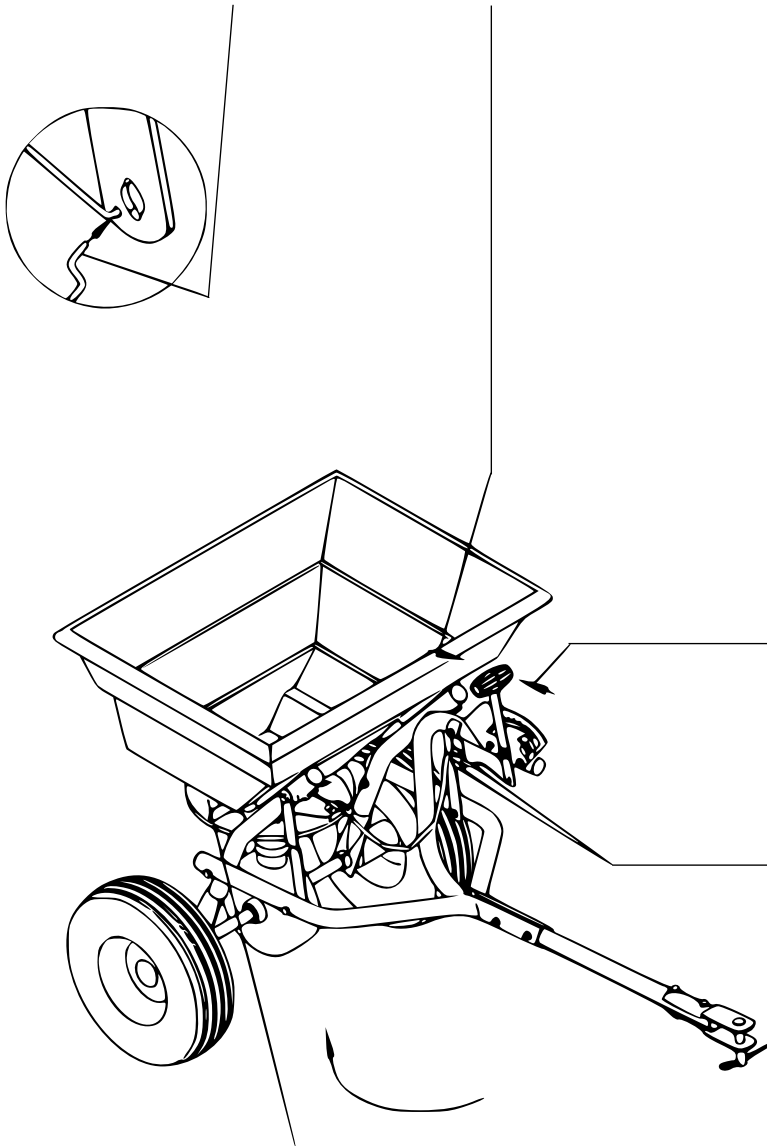




*6<sup>th</sup> step: adjustments*

After having finished the above-mentioned steps, the following steps do not need to be followed. They are necessary in case the individual parts do not properly match. To operate this spreader, push the handle up. You can shift the position of the wing nut on the pressure gauge and lever to adjust the spacer of the three holes between the hopper and adjustable plate according to your needs.

Set the steel wire into the small hole. To operate this spreader, push the handle all the way up to the highest position.

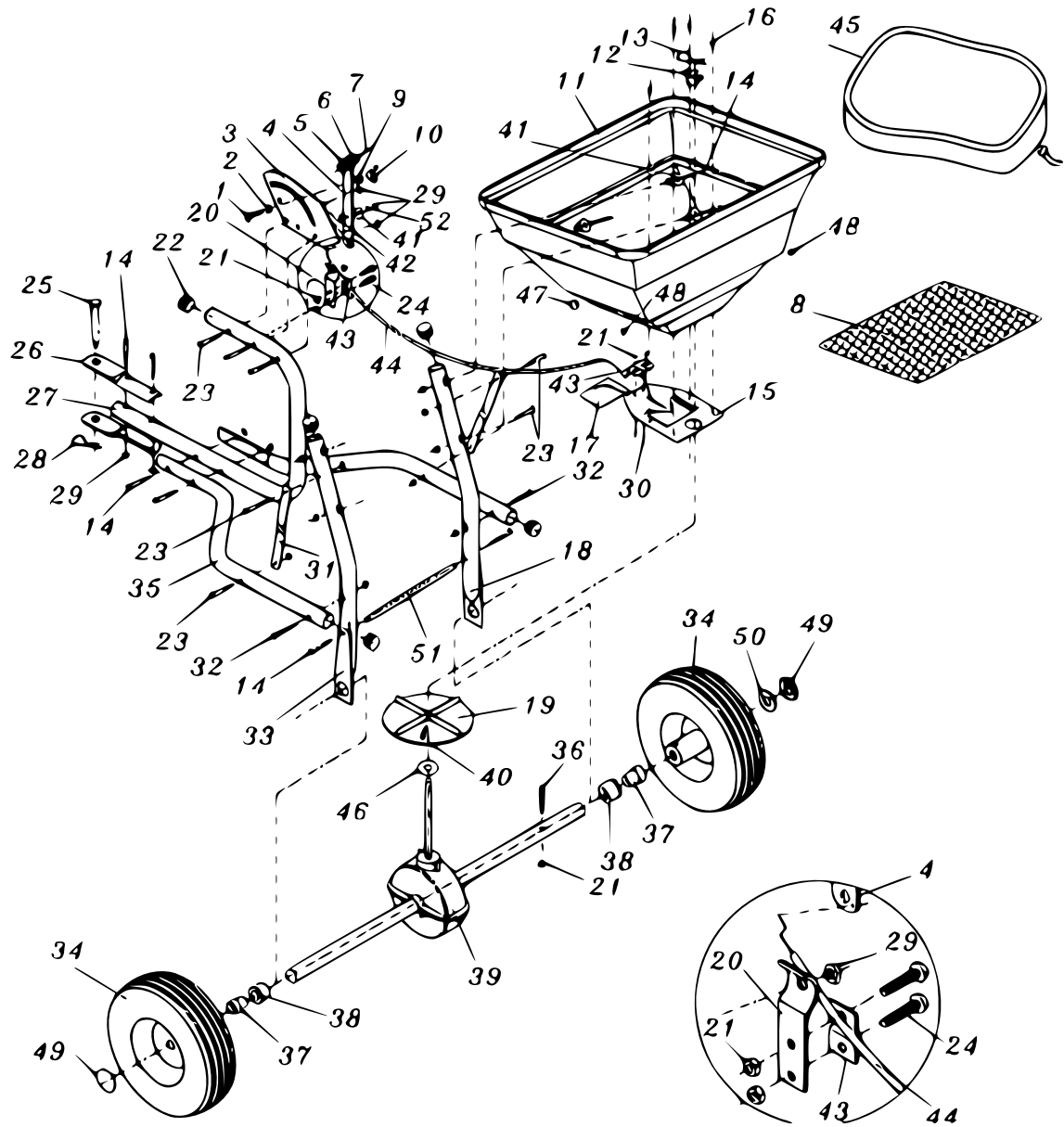


Push the handle alle the way down. Use it to adjust the adjustable plate so that the hole on the hopper bottom exactly matches the holes on the adjustable plate.

Untighten and remove both bolts. Re-insert them after modifying the adjustments.

The drive wheel should turn in the direction shown while the spreader in pushed forward.

Exploded view





**Parts list**

No	Name	Qty.	No	Name	Qty.
1	Sledge screw M6×25	1	27	Mounting tube	1
2	Toothed washer ø8	1	28	R pin ø3	1
3	Pressure gauge and lever part	1	29	Counter nut M6	18
4	Adjustable handle rod	1	30	Screw M5×12	2
5	Handle bar A	1	31	Connecting plate	2
6	Handle bar B	1	32	Bolt M6×60	1
7	Screw M4×18	1	33	Wheel frame assembly (right)	2
8	Hopper filter	1	34	Pneumatic tyre	2
9	Spacer	1	35	Connecting rod	2
10	Winged nut	1	36	Hexagon socket screw M5×45	1
11	Hopper	1	37	Inner axle-bearing	2
12	Middle cover	1	38	Outer axle-bearing	2
13	R pin	1	39	Driving and axle assembly	1
14	Bolt M6×40	10	40	Screw M4×20	1
15	Fixed plate	1	41	Big washer ø6	5
16	Screw M5×12	4	42	Nylon washer	1
17	Adjustable plate	1	43	Connecting pressure plate	2
18	Wheel frame assembly (left)	1	44	Control rod	1
19	Driving wheel	1	45	Rain protection	1
20	Connecting base plate	1	46	Flat washer	1
21	Counter nut M5	5	47	Big end cap	1
22	Tube end cap	5	48	Small end cap	2
23	Bolt M6×35	7	49	Axle end cap	2
24	Fillister head screw M5×10	2	50	Washer ø16	1
25	Round headed pin	1	51	Connecting and fixing rod	1
26	Tow-bar connecting rod	2	52	Spring washer ø6	1

**Important Note:**

Reproduction and any commercial use (of parts) of this operating manual, requires a written permission of WilTec Wildanger Technik GmbH.