

# Operation Manual

## Demolition Hammer

61202



Illustration similar, may vary depending on model

Read and follow the operating instructions and safety information before using for the first time.

Technical changes reserved!

Due to further developments, illustrations, functioning steps, and technical data can differ insignificantly.

Updating the documentation

If you have suggestions for improvement or have found any irregularities, please contact us.



The information contained in this document may alter at any time without previous notice. It is prohibited to copy or spread any parts of this document in any way without prior written allowance. All rights reserved.

The WilTec Wildanger Technik GmbH cannot be held accountable for any possible mistakes in this operating manual, nor in the diagrams and figures shown.

Even though, the WilTec Wildanger Technik GmbH has undergone biggest possible efforts to ensure that the operating manual is complete, faultless, and up to date, mistakes cannot be entirely avoided.

If you should find a mistake or wish to make a suggestion for improvement, we look forward to hearing from you.

Send an e-mail to:

[service@wiltec.info](mailto:service@wiltec.info)

or use our contact form:

<https://www.wiltec.de/contacts/>

The most recent version of this manual in various languages can be found in our online shop via:

<https://www.wiltec.de/docsearch>

Our postal address is:

WilTec Wildanger Technik GmbH  
Königsbenden 12  
52249 Eschweiler  
Germany

To return orders for exchange, repair, or other purposes, please use the following address. Attention! To allow for a smooth execution of your complaint or return, it is important to contact our customer service team before returning the goods.

Returns Department  
WilTec Wildanger Technik GmbH  
Königsbenden 28  
52249 Eschweiler

E-mail: **service@wiltec.info**

Tel: +49 2403 55592-0

Fax: +49 2403 55592-15



## Introduction

Thank you for purchasing this quality product. **To minimise the risk of injury we urge that our clients take some basic safety precautions when using this device. Please read the operation instructions carefully and make sure you have understood its content.**

Keep these operation instructions safe.

## Safety instructions

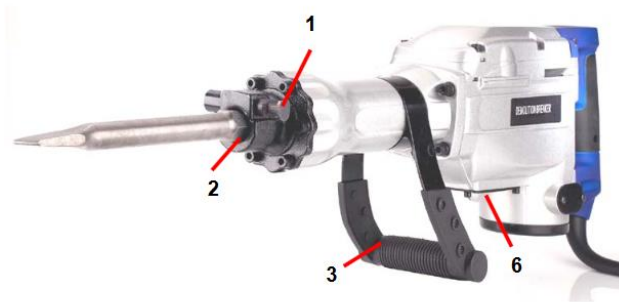
- Perform a visual inspection of the device before each use. Do not use the device if parts are damaged or worn. Never override safety mechanisms.
- Consider the workspace environment. Protect the device from direct exposure to water.
- Do not use power tools in humid or wet areas. Keep the working area well lit.
- Do not use the tool with flammable liquids or gases.
- Never use power tools in hazardous locations with paint, varnish, benzene, thinner, gases, adhesives, and other flammable or explosive materials. Power tools may produce sparks during operation.
- Protection against electric shock: Avoid physical contact with earthed surfaces, e.g., pipes, radiators, cooker plates, or refrigerators.
- Keep children and all visitors away from the work area.
- Keep unused tools safe when they are not in use. Tools should be stored in a dry and high or locked place out of children's reach.
- Make sure that the electrical connections are protected from moisture and flooding.
- Wear hearing protection and safety glasses to protect yourself while working. If you work on objects creating dusts, wear a dust mask.
- Wear gloves to avoid losing control over the machine while working and use the insulated handle surface.
- Before working on the device or changing its equipment, switch the device off and pull the plug.
- Make sure that the cable does not come into contact with the moving parts and lead the cable away from the machine.
- Never operate the device if the power cable is damaged. Visually examine the device before each use. If the cable seems damaged, it needs to be replaced by a qualified technician.
- Ensure that ventilation slots always remain clean and free.
- Wear protective shoes when working.
- Only use the device for its intended purpose.
- Avoid unintentional starting. Do not carry the tool with your finger on the switch. Do not carry the tool by its cable either.
- Clamp moving workpieces down before working, to avoid slipping.
- Do not touch the drill immediately after it has run. The drill will be hot and may cause burns. Always check that the bits are firmly placed before starting the device up.
- Before starting to demolish or chip a wall, floor or a ceiling, ensure that no items such as electric cables or cable ducts are located in the area.
- People with limited physical, sensory, or mental abilities or a lack of experience or knowledge may not use the device unless they are supervised by a person responsible for their safety or have received instructions on how to use the device.
- Avoid unnatural posture. Make sure that you are always standing securely and are able to keep your balance.
- Always be attentive and focus on what you are doing.
- Only use the demolition hammer with the additional handle. Loss of control of the equipment may otherwise result in personal injury.
- The demolition hammer has a hand-arm vibration of 13.717 m/s<sup>2</sup>. Take sufficient breaks to avoid consequential damage caused by strong vibrations.
- Never put the demolition hammer out of your hand when it is switched on.
- Never point the demolition hammer at a person in the immediate surrounding. The tool can be ejected and cause serious injury.

- Allow the demolition hammer to warm up after longer periods of inactivity to allow an optimum lubrication of the parts.
- Make sure that there are no active supply lines in the masonry or concrete (floors, walls, etc.) to be processed.
- Do not touch any metal parts of the hammer, the insulated surfaces will protect you from electric shock if you accidentally hit a live wire.
- Do not use the device if it does not work correctly or has been damaged by a fall. Do not disassemble the device yourself but contact a qualified technician.

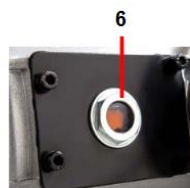
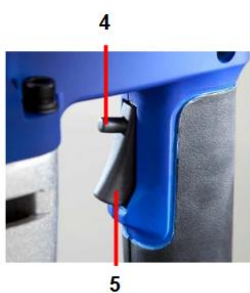
**Note!**

- The demolition hammer is the ideal companion for your modernisation projects. Whether you want to demolish walls, floors, or tiles, the demolition hammer will provide you with powerful support.
- Please familiarise yourself with the device in the order of this operating manual and keep the operating instructions in a safe place for future reference. Read the safety instructions thoroughly! They are intended to allow the proper handling and help prevent misunderstandings, damages, and injuries.
- This operating manual contains important information on commissioning and handling. Please enclose the manual with the product if you pass it on to third parties.

**Product overview**



No	Name
1	Locking mechanism
2	Tool holder
3	Additional handle
4	Safety switch
5	On/off switch
6	Oil tank cover
7	Flat chisel
8	Pointed chisel
9	Wrench
10	Hex wrench





### Technical specifications

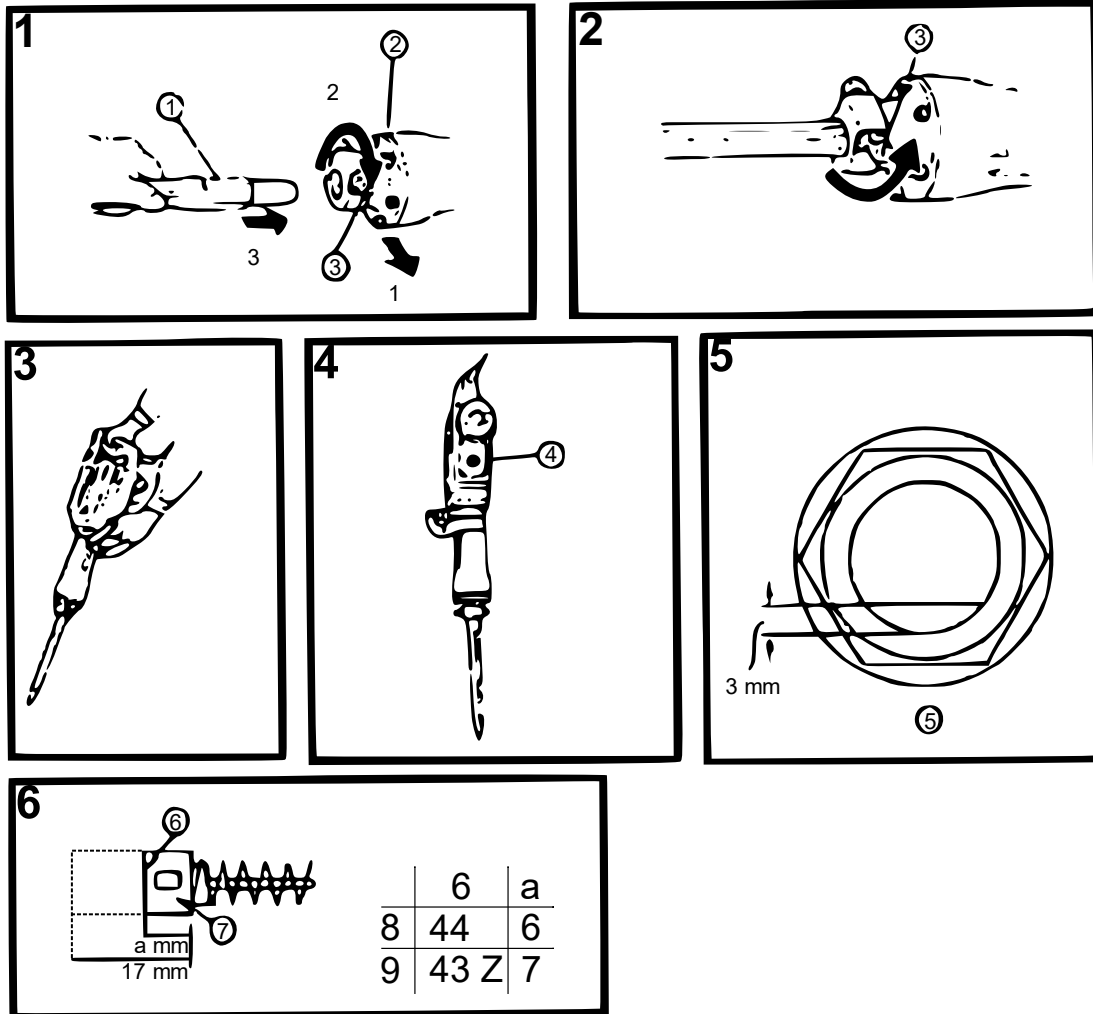
<b>Nominal voltage (V)</b>	230
<b>Nominal frequency (Hz)</b>	50
<b>Power (W)</b>	1700
<b>Impact setting</b>	Electrical
<b>Impact power (J)</b>	40
<b>Impact frequency (1/min)</b>	1900
<b>Drill hole diameter (mm)</b>	30
<b>Weight (kg)</b>	13.5
<b>Total size (cm)</b>	76×18×31

### Standard accessories

- Transport box 1×
- Chisel (overall length 410 mm) 1×
- Oil supply 1×
- Hex wrench 2×
- Socket wrench 1×

**Application:** Demolition, crushing, and chipping of concrete/brickwork

## Device description



1. Hold the unit with the flat side facing up.
2. Front cover
3. Hold handle tightly
4. Oil level indicator – Check the oil level by holding the drill vertically.
5. Fill up with oil if the quantity falls below 3 mm.
6. Wear limit
7. Carbon brush number
8. Standard carbon brush
9. Auto stop of the carbon brush

### Before use

#### Power Source

Make sure that the power source you are using complies with the requirements on the nameplate.

#### Earthing

To protect the user from electric shock, this device is earthed during use. The device is equipped with a three-core cable and an earthed plug to allow use of the correct earthed outlet. The green wire in the cable is the earth wire. Never connect the green (or green and yellow) wire to a live terminal!



### *On/off switch*

The switch of the device must be in the **OFF** position when you connect the device to the power supply to prevent accidental starting of the device and the associated risk of injury. To switch the device on, first press the safety switch (4), then the on/off switch. To switch the device off, release the on/off switch. Always hold the demolition hammer with both hands when working.

### *Extension cable*

If the working area is further away from the power source, use an extension cable with sufficient thickness and rated power. The extension cable must be as short as possible to prevent entanglement.

### *Refilling of oil*

Before using the device for the first time, check the oil level and fill the right oil in up to the marked level (the tank comes pre-filled from the factory with only a small amount of oil).

### *Changing attachments*

Before assembling or disassembling the tools, make sure that the demolition hammer is switched off and the electricity plug is disconnected. The tool holder makes it easy and convenient to change tools without using a key.

**Note!** For better results, the use of standard attachments is recommended.

1. Turn the handle 180° clockwise as you pull it towards you. Insert the tool shaft into the hexagonal hole (fig. 1).
2. Clamp the tool by turning the handle half a turn in the opposite direction (fig. 2). The tool must be movable in the holder, but must not be able to be pulled out.
3. To remove the tool, first pull the lock to the back, then the tool can be removed from the holder. The hammer function causes constant mechanical friction between the tool holder and the tool shaft. Therefore, regularly grease the tool shaft end with gear grease before inserting it. Wait until the shaft has cooled down after operating the tool. Otherwise, there is a danger of being burnt!

### **Using the device (Fig. 3)**

1. After inserting the attachment, press the on button. In some cases, it may be necessary to slightly tap against the attachment to trigger the strike mechanism. This does not mean that there is a fault with the device, but that the protective mechanism works at zero load capacity.
2. Hold the tool firmly with both hands and use the weight of the drill to control the recoil movement. Work at a moderate pace. Too high a speed affects the efficiency.

**Attention:** If the percussion mechanism does not start despite the engine turning, the oil thickened. If the device is used at low temperatures or after being stored for longer periods of time, it should first run for 5 min to warm up.

### **Refilling oil (Fig. 4 and 5)**

**Attention:** Before refilling oil, always unplug the mains plug from the socket. For a daily use of 3–4 hours, the percussion drill can be used for about 20 days without refilling oil.

- Refill the oil before the oil level reaches its minimum.
- Remove the oil level indicator before refilling. Be careful not to lose the rubber under the indicator.
- Check the oil level daily to ensure that there is always enough oil.
- After refilling, reconnect the oil level indicator.

## Maintaining and servicing

### *Checking the attachment*

The use of a blunt attachment leads to the engine malfunctioning and thus to performance loss. As soon as you notice the wear, replace or sand the attachment.

### *Maintaining the fixing screws*

Regularly check that all fixing screws are tight. Tighten the screws if they are loose. Failure to do so may result in dangerous situations.

### *Maintaining the motor*

The electric motor is the “heart” of the device. Always make sure that the electric motor is never damaged and/or gets wet with oil or water.

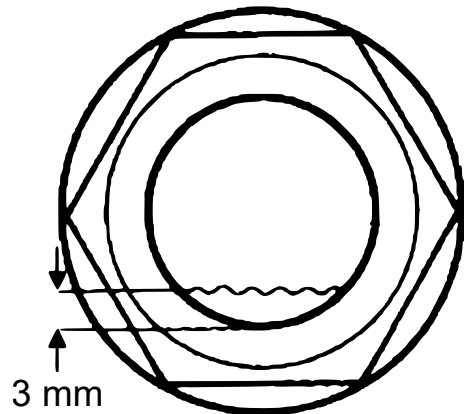
### *Checking the carbon brushes (Fig. 6)*

Carbon brushes, which are wearing parts, are used in this tool. If the carbon brushes are used up to the end, motor damage can occur. If the automatic stop for the carbon brushes is switched on, the motor stops automatically. Replace both carbon brushes with new ones. Make sure that the carbon brushes can move freely in the holders. Steps to change: Remove the carbon brushes by removing the cover.

## Cleaning and checking the oil level

Always disconnect the mains plug before working on the demolition hammer!

1. Clean the machine housing only with a slightly damp cloth or absorbent fleece.
2. When cleaning, make sure that no liquid penetrates the inside of the housing.
3. Clean the tool holder from dust and grease at regular intervals.
4. After prolonged non-use or commissioning at sub-zero temperatures, first allow the demolition hammer to run for a few minutes at idle to achieve good distribution of the lubricant in the machine.
5. Check at regular intervals if there is still enough oil in the gear unit. Place the demolition hammer upright so that the oil can collect. If there is less than 3 mm of oil in the chamber, unscrew the oil chamber cover (6) with the wrench (9) and fill in new oil. Carefully re-tighten the cover with the key. Make sure not to lose the rubber sealing ring.
6. If any further maintenance or repair work require the housing to be opened, only have them carried out by a qualified specialist or contact an authorized service partner.





## Disposal regulations

EU guidelines regarding the disposal of scrap electric appliances (WEEE, 2012/19/EU) were implemented in the law related to electrical and electronic equipment and appliances.

All WiITec electric devices that fall under the WEEE regulations are labelled with the crossed-out wheeled waste bin logo. This logo indicates that this electric equipment must not be disposed with the domestic waste.

The company WiITec Technik GmbH has been registered in the German registry EAR under the WEEE-registration number DE45283704.

Disposal of used electrical and electronic appliances (intended for use in the countries of the European Union and other European countries with a separate collection system for these appliances).

The logo on the article or on its packaging points out that this article must not be treated as normal household waste but must be disposed to a recycling collection point for electronic and electrical waste equipment. By contributing to the correct disposal of this article you protect the environment and the health of your fellow men. Environment and health are threatened by inappropriate disposal.



Material recycling helps reduce the consumption of raw materials.

Additional information on recycling this article can be provided by your local community, municipal waste disposal facilities, or the store where you purchased the article.

Address:  
WiITec Wildanger Technik GmbH  
Königsbenden 12 / 28  
D-52249 Eschweiler

Important notice:

The reprint or reproduction, even of excerpts, and any commercial use, even in part, of this instruction manual require the written permission of WiITec Wildanger Technik GmbH.