

Operation Manual

Compressed Air White Paint Spray Gun

61304



Illustration similar, may vary depending on model

Please read and follow the operating instructions and safety information prior to initial operation.

Technical changes reserved!

Illustrations, functional steps, and technical data may deviate insignificantly due to continuous further developments.



The information contained in this document may alter at any time without prior notice. No part of this document may be copied or otherwise duplicated without prior written consent. All rights reserved. WilTec Wildanger Technik GmbH cannot be held liable for any possible mistakes in this operating manual, nor in the diagrams and illustrations shown.

Although WilTec Wildanger Technik GmbH has made every possible effort to ensure that this operating manual is complete, accurate, and up-to-date, errors cannot be ruled out entirely.

If you have found an error or wish to suggest an improvement, we look forward to hearing from you.

Send us an e-mail to:

service@wiltec.info

or use our contact form:

<https://www.wiltec.de/contacts/>

The most recent version of this manual in several languages can be found in our online shop:

<https://www.wiltec.de/docsearch>

Our postal address is:

WilTec Wildanger Technik GmbH
Königsbenden 12
52249 Eschweiler Germany

To return your goods for exchange, repair, or other purposes, please use the following address. Attention! To allow for a trouble-free complaint or return, it is important to contact our customer service team before returning your goods.

Retourenabteilung
WilTec Wildanger Technik GmbH
Königsbenden 28
52249 Eschweiler Germany

E-mail: **service@wiltec.info**

Phone: +49 2403 55592-0

Fax: (+49 2403 55592-15)

Introduction

Thank you for choosing to purchase this quality product. To minimise the risk of injury, we ask you to always take some basic safety precautions when using this product. Please read this operating manual carefully and make sure that you understand it. Keep these operation instructions in a safe place.

Safety instructions

- Before use, check the device for completeness, functionality, and tightness.
- Never use a damaged or dysfunctional device. Only have repairs made by qualified persons.
- When performing any work with the device, wear protective equipment such as working gloves, protective goggles, respiratory protection, hearing protection, etc.
- Always work in well-lit and well-ventilated rooms.
- Always make sure that parts of your body or clothes cannot get near dangerous zones while working.
- Never point the white pain spray gun towards persons, animals, or sources of heat.
- Avoid any unintentional starting of the trigger when not using the device.
- Keep children and unauthorised persons away from your working area.
- Always work with care and the attention required.
- Never apply force when operating the device.
- Make sure to have a good a safe stand when using the device.
- Never exceed the maximum pressure of 4.8 bar.
- Only use pressurised air from a pressurised-air source. Never use gases such as oxygen.
- Disconnect the pressurised-air supply when the device is not in use.
- Never carry the device on its pressurised-air hose.
- Do not use the device when being tired or under the influence of alcohol, drugs, or medicine.

Intended use

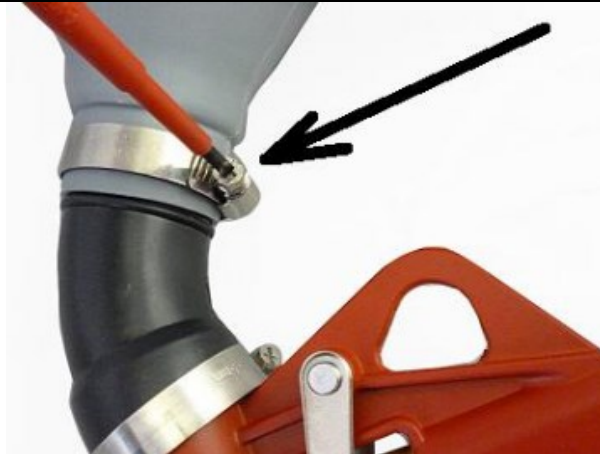
The white pain spray gun is suitable for spraying liquid renders. Never use it to spray abrasive material (e.g., sand).

Commissioning

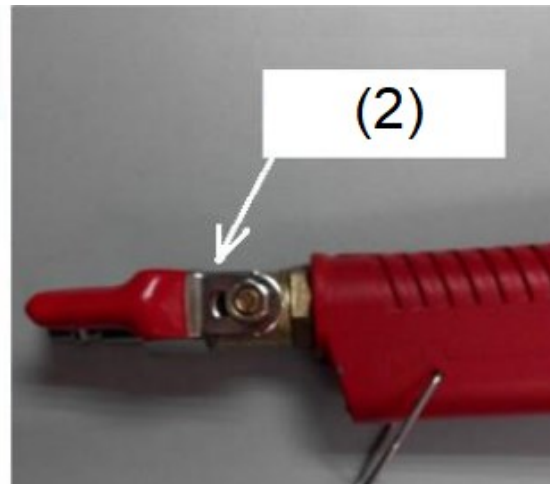
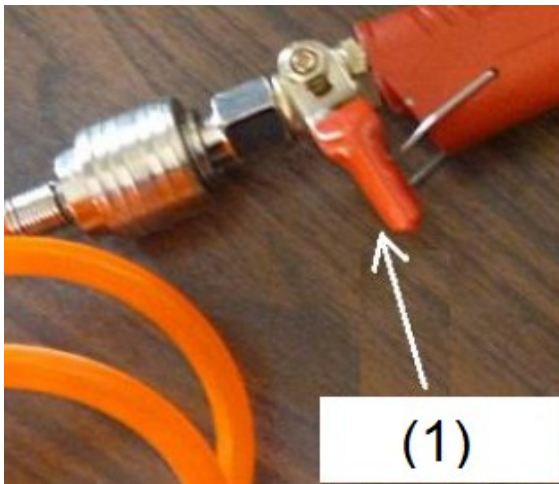
1. Choose an appropriate nozzle.
2. Attach it to the front of the device, then fix it with the help of the retainer ring.



3. Fix the connection tube to the casing with the help of the clamp and screw delivered.

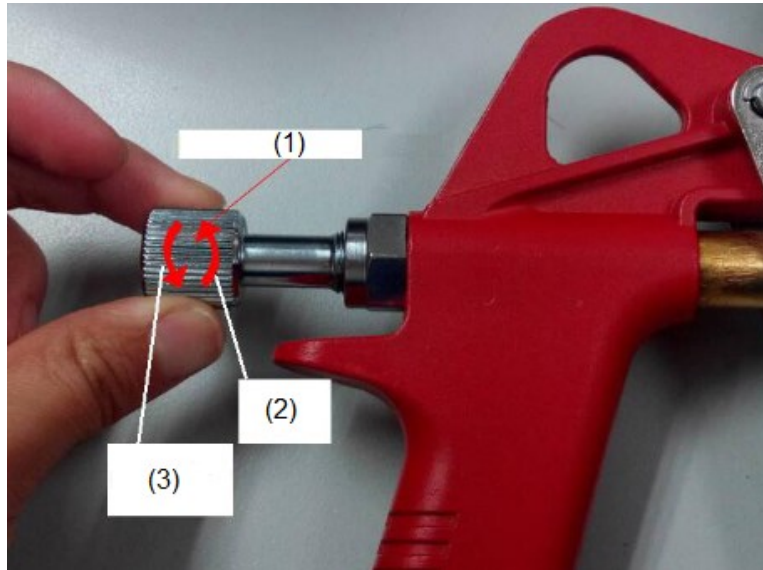


4. Connect the pressurised-air hose of your compressor to the pressurised-air connector of the white paint spray gun. Make sure that the valve is closed.



1	Valve closed	2	Valve open
----------	--------------	----------	------------

5. Fill the medium to be sprayed into the hopper. **Attention!** Do not fill the hopper to overflowing.
6. Adjust the compressor to approx. 3.4 bar. If necessary, you may increase the pressure later to a maximum value of 4.8 bar.
7. Adjust the flow rate with the help of the dosing screw at the rear part of the spray gun.



1	Dosing screw	2	More	3	Less
----------	--------------	----------	------	----------	------

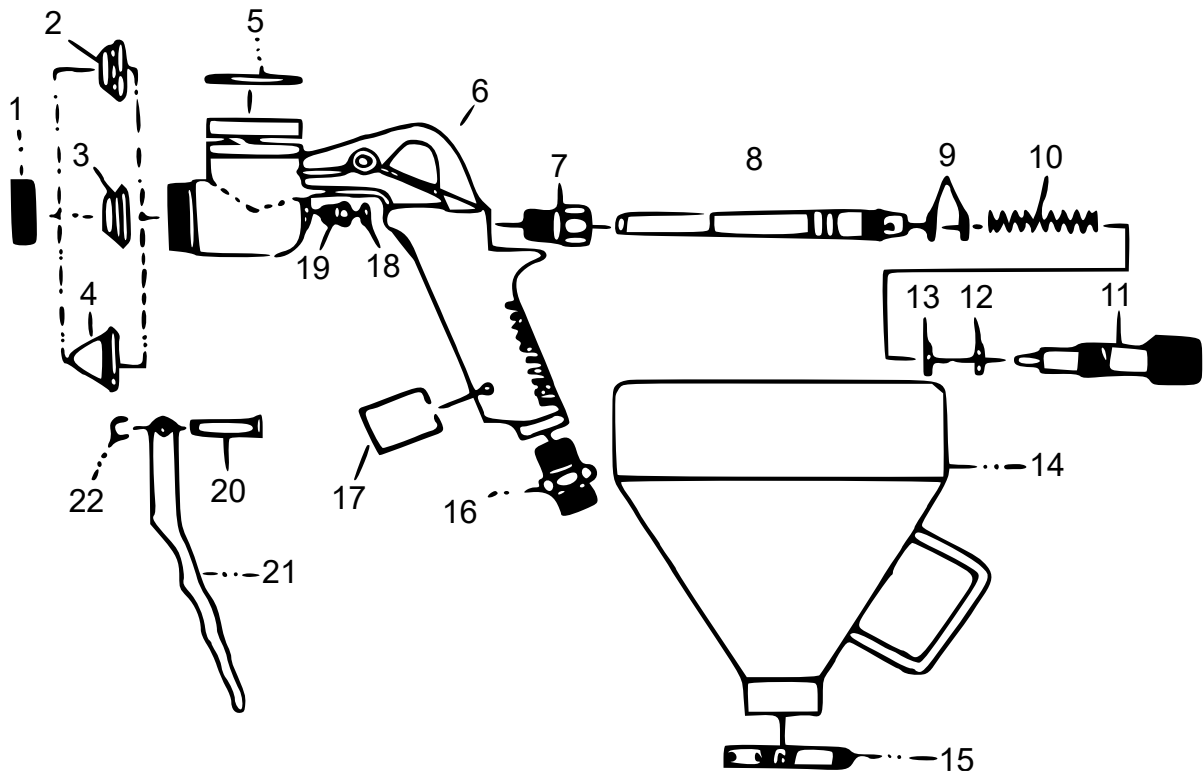
Cleaning and maintaining

- Before every use, make sure that there is no condensed water inside the pressurised-air hoses.
- Empty the hopper completely after finishing work.
- Thoroughly clean the nozzle and hopper after use.
- Wipe the device clean with a dry, clean cloth.
- Store the device in a dry and clean spot, away from frost.

Technical specifications

Hopper volume (ℓ)	7.5
Working pressure (bar)	3.4–4.8
Pressurised-air connector (inch)	G ¼

Exploded view and parts list



No	Name	No	Name
1	Retainer ring	12	O-ring
2	4.0 mm nozzle	13	Gasket
3	6.0 mm nozzle	14	Hopper
4	8.0 mm nozzle	15	Clamp
5	O-ring	16	Pressurised-air connector
6	Housing	17	Clip (for trigger)
7	Bushing	18	O-ring
8	Shaft	19	Connecting piece
9	O-ring	20	Pin
10	Spring	21	Trigger
11	Regulator	22	E-ring

Important Note:

Reproduction and any commercial use (of parts) of this operating manual, requires a written permission of WilTec Wildanger Technik GmbH.