

User's manual

Automatic Compressed Air Hose Reel

61313



Illustration similar, may vary depending on model

Please read and follow the operating instructions and safety information prior to initial operation.

Technical changes reserved!

Illustrations, functional steps, and technical data may deviate insignificantly due to continuous further developments.



The information contained in this document may alter at any time without prior notice. No part of this document may be copied or otherwise duplicated without prior written consent. All rights reserved. WilTec Wildanger Technik GmbH cannot be held liable for any possible mistakes in this operating manual, nor in the diagrams and illustrations shown.

Although WilTec Wildanger Technik GmbH has made every possible effort to ensure that this operating manual is complete, accurate, and up-to-date, errors cannot be ruled out entirely.

If you have found an error or wish to suggest an improvement, we look forward to hearing from you. Send us an e-mail to:

service@wiltec.info

or use our contact form:

<https://www.wiltec.de/contacts/>

The most recent version of this manual in several languages can be found in our online shop:

<https://www.wiltec.de/docsearch>

Our postal address is:

WilTec Wildanger Technik GmbH
Königsbenden 12
52249 Eschweiler Germany

To return your goods for exchange, repair, or other purposes, please use the following address. Attention! To allow for a trouble-free complaint or return, it is important to contact our customer service team before returning your goods.

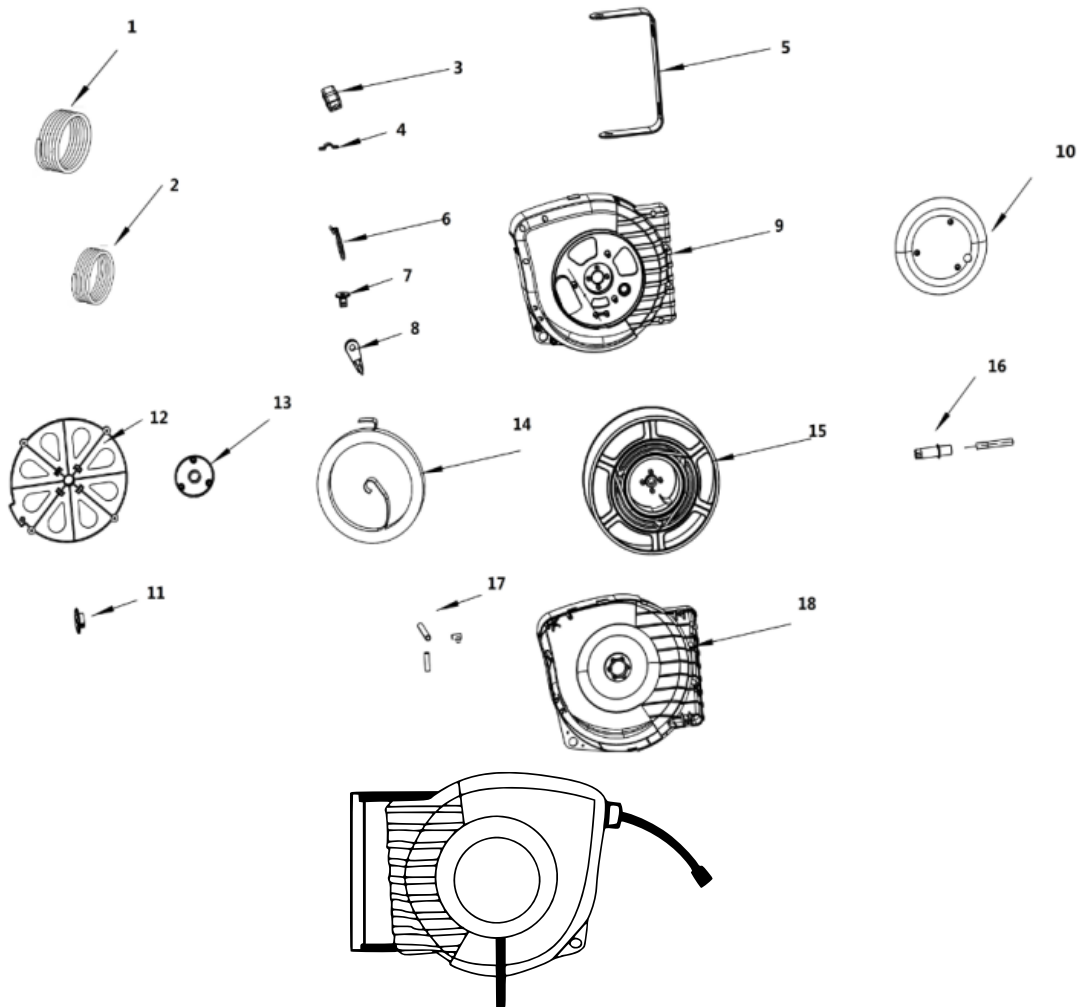
Retourenabteilung
WilTec Wildanger Technik GmbH
Königsbenden 28
52249 Eschweiler Germany

E-mail: **service@wiltec.info**
Tel: +49 2403 55592-0
Fax: +49 2403 55592-15

Introduction

Thank you for choosing to purchase this quality product. To minimise the risk of injury, we ask you to always take some basic safety precautions when using this product. Please read this operating manual carefully and make sure that you understand it. Keep these operation instructions in a safe place.

Parts list

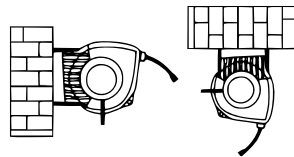


| No | Name | No | Name | No | Name |
|----|-------------------|----|-------------------|----|---------------|
| 1 | Outlet hose | 7 | Bracket holder | 13 | Drum cover |
| 2 | Inlet hose | 8 | Lock pin | 14 | Spring |
| 3 | Stopper | 9 | Left housing | 15 | Drum |
| 4 | Stopper accessory | 10 | Cover to 9 | 16 | Centre shaft |
| 5 | Bracket | 11 | Pre-tension cover | 17 | Cylinder |
| 6 | Hang ring | 12 | Spring cover | 18 | Right housing |

Assembly

This hose reel is suitable for mounting near an air compressor. To achieve the greatest possible range with the greatest possible freedom of movement, place it in the middle of a workshop. Then it will be easier to unroll the hose to the desired spot.

- Connect the inlet hose to the pressurised-air source.
- The mounting bracket can be attached to a brick wall. There are many different positions for mounting; you should consider a spot that is most convenient for use and user.
 - a. Vertical or horizontal mounting to a wall, approx. 1 m above the floor, would be best (see Fig.).



- b. The drum hangs on a pin and must be fixed or locked via a bolt to ensure sufficient safety.
- The bracket has 2 holes on either side, equipped with corresponding M8 screws (all three holes can be equipped with screws). Each screw must have a spring washer or simple washer (see Fig. 1). Refer to Fig. to know the positions of the three holes (dimensions of bracket). You might also consider buying an additional bracket to extend the range of the reel during use.

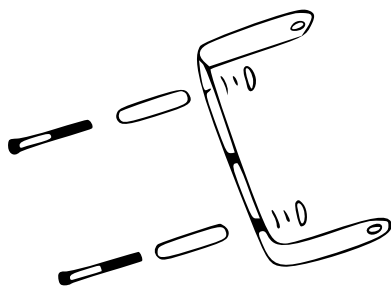


Fig. 1

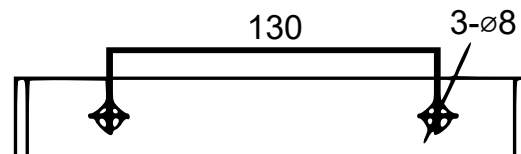


Fig. 2

Using the hose

- After use, turn off the air supply and close the air valve before rolling the hose up.
- Do not leave the reel outside with very low temperatures; otherwise, the hose could become less flexible and thus be less easy to roll up.
- Make sure that the hose does not get into contact with chemicals or other substances, such as acetone or spirit.

Correctly latching and retracting the hose

This hose reel has a locking wheel and detent. Therefore, it is very easy to unroll and to roll up the hose. When unrolling the hose, you can latch it at any length. When wanting to have the hose retracted, pull it out for another 3–5 cm, then it will be rolled up automatically. Do not loose your hold on the hose until it is completely retracted. In case the hose is twisted, it must be unrolled to its full length, then re-drawn in so that it can become straight and be rolled up evenly.



Maintenance

- Do not immerse the reel in the water to clean it. In case the hose is very dirty, clean it before rolling up.
- To extend the service time of the reel, it should be installed in a protected location. The metal parts will be affected outdoors, especially with sunlight; this will affect the service time of the drum housing and retracting wheel, too.
- If not using the reel, store it at a safe and dry place without direct sunlight.

Technical specifications

| | |
|--------------------------------|----------------|
| Hose length (m) | 9 |
| Hose diameter (mm) | 8 × 12 (5/16") |
| Material | PVC |
| Working pressure (bar) | 8 |
| Bursting pressure (bar) | 24 |
| Temperature range (°C) | -5—+45 |
| Connections (mm) | 6.5 (1/4") |
| Weight (kg) | 2.8 |

Important Note:

Reproduction and any commercial use (of parts) of this operating manual, requires a written permission of WilTec Wildanger Technik GmbH.