

Operation Manual

Pneumatic Jack 22 t

61336



Illustration similar, may vary depending on model

Read and follow the operating instructions and safety information before using for the first time.

Technical changes reserved!

Due to further developments, illustrations, functioning steps, and technical data can differ insignificantly.

Updating the documentation

If you have suggestions for improvement or have found any irregularities, please contact us.



The information contained in this document may alter at any time without previous notice. It is prohibited to copy or spread any parts of this document in any way without prior written allowance. All rights reserved.

The WilTec Wildanger Technik GmbH cannot be held accountable for any possible mistakes in this operating manual, nor in the diagrams and figures shown.

Even though, the WilTec Wildanger Technik GmbH has undergone biggest possible efforts to ensure that the operating manual is complete, faultless, and up to date, mistakes cannot be entirely avoided.

If you should find a mistake or wish to make a suggestion for improvement, we look forward to hearing from you.

Send an e-mail to:

service@wiltec.info

or use our contact form:

<https://www.wiltec.de/contacts/>

The most recent version of this manual in various languages can be found in our online shop via:

<https://www.wiltec.de/docsearch>

Our postal address is:

WilTec Wildanger Technik GmbH
Königsbenden 12
52249 Eschweiler
Germany

To return orders for exchange, repair, or other purposes, please use the following address. Attention! To allow for a smooth execution of your complaint or return, it is important to contact our customer service team before returning the goods.

Returns Department
WilTec Wildanger Technik GmbH
Königsbenden 28
52249 Eschweiler

E-mail: **service@wiltec.info**

Tel: +49 2403 55592-0

Fax: +49 2403 55592-15



Introduction

Thank you for purchasing this quality product. **To minimise the risk of injury we urge that our clients take some basic safety precautions when using this device. Please read the operation instructions carefully and make sure you have understood its content.**

Keep these operation instructions safe.

Safety warnings and precautions

Warning: When using tools, basic safety precautions should always be followed to reduce the risk of personal injury and damage to equipment. Read all instructions before using the tool.

- **Work area conditions.** Cluttered areas invite injuries.
- **Additional work area conditions.** Do not use machines or power tools in damp or wet locations. Do not expose them to rain. Keep work area well illuminated.
- **Keep children away.** Children must never be allowed in the work area. Do not let them handle machines, tools, or extension cords.
- **Store idle equipment.** When not in use, tools must be stored in a dry location to avoid rust. Always lock tools up and keep them out of reach of children.
- **Use the right tool for the job.** Do not attempt to force a smaller tool or attachment to do the work of a larger industrial tool. There are certain applications for which this tool was designed. It will carry its job out better and safer at the rate for which it was intended.
- **Dress properly.** Do not wear loose clothing or jewellery as they can get caught in moving parts. Protective, electrically non-conductive clothes and non-slip footwear are recommended when working. Tie long hair together.
- **Use eye protection.** Always wear approved impact safety glasses underneath a full-face shield during use. Also wear heavy duty work gloves.
- **Do not overreach.** Always keep proper footing and your balance. Do not reach over or across running machines.
- **Maintain tools with care.** Keep tools sharp and clean for better and safer performance. Follow instructions for lubrication and changing equipment. The handles must be kept clean, dry and free from oil and grease at all times.
- **Remove adjusting keys and wrenches.** Check that adjustment keys and wrenches are removed from the tool or machine and its work surface before starting to work.
- **Stay alert.** Watch what you are doing, stay aware. Do not operate any tool when you are tired.
- **Check for damaged parts.** Before using any tools, any part that appears to be damaged should be carefully checked to determine that it will operate properly and perform its intended function. Any part that is damaged should be replaced.
- **Replacement parts and equipment.** When servicing, only use original replacement parts. Use of any other parts will void the warranty. Only use equipment intended for this tool.
- **Do not operate tools under the influence of alcohol or drugs.** Read warning labels on the medicaments to determine if your judgment or reflexes are impaired while taking them. If there is any doubt, do not operate the tool.



Operating instructions

Specifications

Max. load capacity (t)	22	
Max. lift of the hydraulic cylinder (mm)	130	
Max. height (mm)	with 20 mm attachment	455
	with 100 mm attachment	535
Max. total height with lever (mm)	1355	
Air intake diameter (cm)	5 (2.1")	
Air intake length (cm)	12 (4 ³ / ₄ "	
Wheel diameter (mm)	210	
Air hose dimensions (mm)	1100 × ø 12.5	
Air pressure (bar)	8–12	
Weight (kg)	35	

Operation

Lifting:

1. Install the handle assemble well according to assembly drawing.
2. Turn the hand wheel clockwise until tight.
3. Adjust the handle angle degree as needed. Place the jack into the position of the load.
4. Adjust the extension screw as needed. Turn counter clockwise to raise and clockwise to lower.
5. Connect the air supply hose lock fitting into the air inlet fitting. The lever should be off (not locked).
6. Press the lever to the on position and lock using lock lever. This provides a continuous air supply to the air motor.
7. Raise the jack by alternately lifting and lowering the handle bar.

Lowering:

1. Release the lock lever to stop the air flow to the air motor.
2. Remove the air supply hose from the air inlet fitting.
3. Slowly and carefully lower the load by turning the hand wheel counter clockwise in extremely small steps using only the handle bar (never use your hand).
4. Lower the extension screw as needed by turning it clockwise.
5. Remove the jack.

Caution: Avoid rapid descent of the load. Turn the release valve slowly.

Maintenance

General Care

- Periodically lubricate the joints and extension screw with a light oil as required.
- Clean the outside of the jack with a dry clean cloth.
- If the jack is exposed to humidity, wipe it dry with a clean cloth and lubricate it as stated above.
- Store the jack with the extension screw and ram fully collapsed.



Bleeding air from the hydraulic system

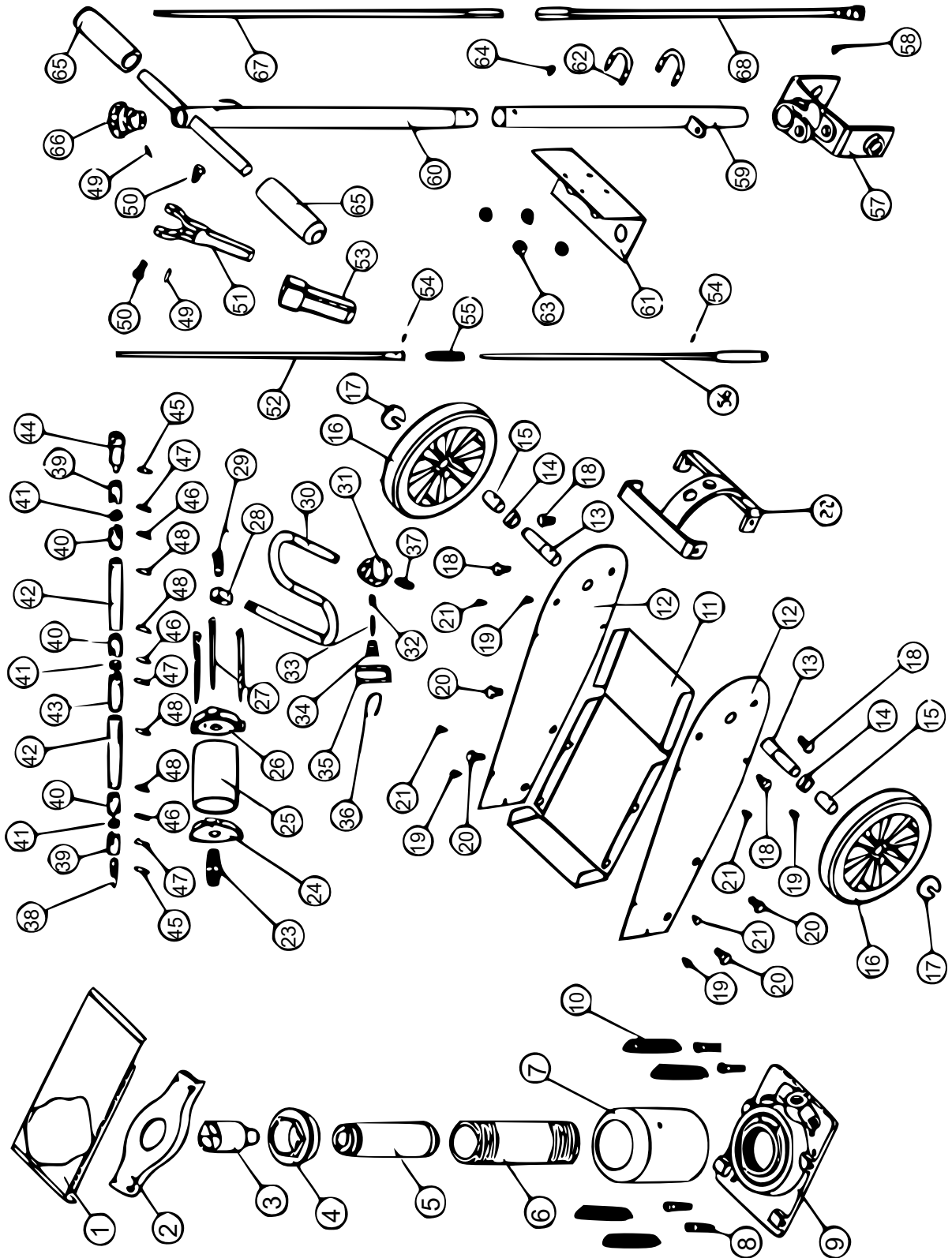
Air bubbles can become trapped inside the hydraulic system thus reducing the efficiency of the jack. Bleed the air from the system if the lifting efficiency decreases.

1. Turn the hand wheel 1½ turns counter clockwise.
2. Connect the air supply hose lock fitting into the air inlet fitting. Open the air valve and work for a moment to bleed the air from the hydraulic system.
3. Turn the hand wheel clockwise until tight.
4. Remove tools from the reservoir of the jack as described below.
5. Replace the filler plug.

Oil replacement

1. Place the filler plug.
2. Completely lower the ram.
3. Then remove the filler plug.
4. Fill with high-quality jack oil to the lower rim of the fill hole.
5. Bleed air from the hydraulic system as previously described.
6. Fill-up with more hydraulic oil.
7. Replace the filler plug.

Explosion drawing and parts list





No	Name	Qty.	No	Name	Qty.
1	Cover	1	35	Handle cover	1
2	Upper cover	1	36	Locking spring	1
3	Pole	4	37	Cylinder screw	1
4	End cover	1	38	Oil backflow valve	1
5	Piston	1	39	Universal joint	2
6	Stem	1	40	Universal joint	3
7	Cover	1	41	Connector block	3
8	Screw	4	42	Connection pipe	2
9	Basis	1	43	Universal joint	1
10	Spring	4	44	Universal joint	1
11	Ground panel	2	45	Pin \varnothing 3	2
12	Side panel	2	46	Pin \varnothing 5	2
13	Wheel axis	2	47	Rivet \varnothing 3	3
14	Socket	2	48	Eyebolt \varnothing 4	4
15	Socket	2	49	Eyebolt \varnothing 3	2
16	Tyres	2	50	Screw M6	2
17	Circlip	2	51	Adjustable handle	1
18	Screw M10	4	52	Adjustable pole	1
19	Screw M6	4	53	Clutch cover	1
20	Screw M10	4	54	Circlip	2
21	Screw M5	4	55	Adjustable spring	1
22	Side panel fixture	4	56	Adjustable pole	1
23	Cylinder screw	1	57	Handle position	1
24	Triangular base plate	1	58	Screw M8	1
25	Cylinder	1	59	Handle	1
26	Triangular base plate	1	60	Handle	1
27	Hexagon screw M8	3	61	Upper frame	1
28	Swivel connection	1	62	U-bolt	2
29	Swivel connection	1	63	Nut M8	4
30	Rubber hose	1	64	Screw M6	1
31	Cover	1	65	Handle cover	2
32	Conical spring	1	66	Rotary knob	1
33	Piston rod	1	67	Oil backflow valve	1
34	Throttle	1	68	Oil backflow valve	1

Important notice:

The reprint or reproduction, even of excerpts, and any commercial use, even in part, of this instruction manual require the written permission of WilTec Wildanger Technik GmbH.