

Operation Manual

10 t Hydraulic Repair Set

61491



Illustration similar, may vary depending on model

Read and follow the operating instructions and safety information before using for the first time.

Technical changes reserved!

Due to further developments, illustrations, functioning steps, and technical data can differ insignificantly.

Updating the documentation

If you have suggestions for improvement or have found any irregularities, please contact us.



The information contained in this document may alter at any time without previous notice. It is prohibited to copy or spread any parts of this document in any way without prior written allowance. All rights reserved.

The WilTec Wildanger Technik GmbH cannot be held accountable for any possible mistakes in this operating manual, nor in the diagrams and figures shown.

Even though, the WilTec Wildanger Technik GmbH has undergone biggest possible efforts to ensure that the operating manual is complete, faultless, and up to date, mistakes cannot be entirely avoided.

If you should find a mistake or wish to make a suggestion for improvement, we look forward to hearing from you.

Send an e-mail to:

service@wiltec.info

or use our contact form:

<https://www.wiltec.de/contacts/>

The most recent version of this manual in various languages can be found in our online shop via:

<https://www.wiltec.de/docsearch>

Our postal address is:

WilTec Wildanger Technik GmbH
Königsbenden 12
52249 Eschweiler
Germany

To return orders for exchange, repair, or other purposes, please use the following address. Attention! To allow for a smooth execution of your complaint or return, it is important to contact our customer service team before returning the goods.

Returns Department
WilTec Wildanger Technik GmbH
Königsbenden 28
52249 Eschweiler

E-mail: **service@wiltec.info**

Tel: +49 2403 55592-0

Fax: +49 2403 55592-15



Introduction

Thank you for purchasing this quality product. **To minimise the risk of injury we urge that our clients take some basic safety precautions when using this device. Please read the operation instructions carefully and make sure you have understood its content.**

Keep these operation instructions safe.

Information on use

- To use this lifter, turn the valve knob clockwise. Pull and push the handle for ease of use.
- Any position from horizontal to vertical can be used, but the pipe must always point downwards. If necessary, the supplied accessories can be attached to the tool.
- To lower the jack, turn the valve knob counter-clockwise.

Caution:

- The maximum load must not exceed the nominal capacity.
- The load must not exceed half the capacity when all pipes are used.
- The extension of the piston must not exceed the stroke.

Safety precautions

- Use № 10 working oil.
- Check the oil level. If there is not enough hydraulic oil, add some.
- After use, close the valve with the lid so that the oil remains free of dust and dirt.
- Adjust the jack slowly before lifting to properly distribute the load.
- The pipe must not be bent or loaded.

Technical specifications

Lifting capacity (t)	10
Max. lifting height (mm)	approx. 135 (5.31")
Min. size (mm)	approx. 355 (13.98")
Max. size (mm)	approx. 490 (19.29")
Operation pressure (bar)	620 (62 MPa)
Oil quantity (g)	500
Weight (kg)	29



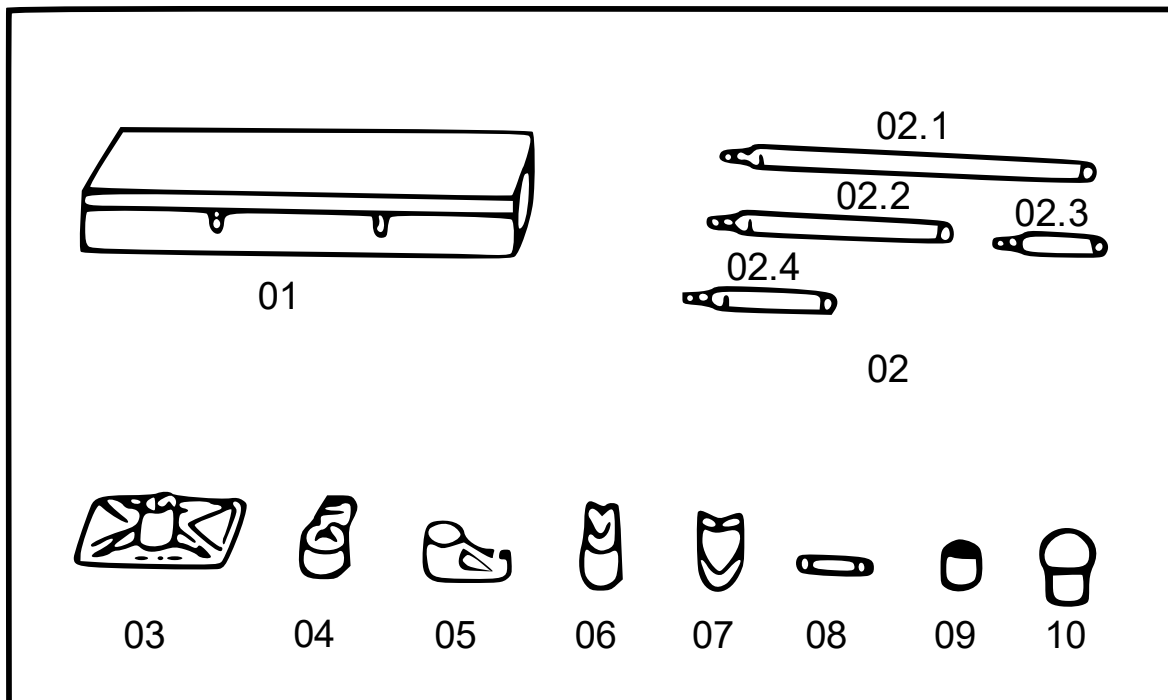
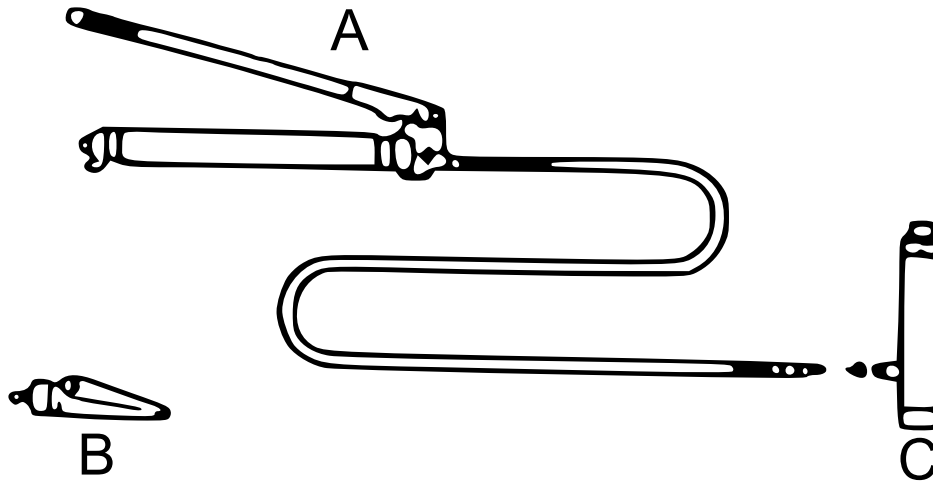
Parts list

No	Name	Qty.	No	Name	Qty.
1	Box	1	P32	O-ring	1
2	Pipes	5 (4)	P33	Nylon ring	1
3	Flat base	1	P34	Pump piston	1
4	Cylinder	1	P35	Bolt	1
5	Piston foot	1	P36	Lock ring	2
6	Wedge attachment	1	P37	Bolt	1
7	V base	1	P38	Handle socket	1
8	Connector	1	P39	Handle	1
9	Serrated connector	1	P40	Handle sleeve	1
10	Rubber head	1	P41	Screw	1
P1	Valve block	1	P42	Nylon ring	1
P2	Oil filter	1	P43	Spring	1
P3	O-ring	2	P44	Ball	1
P4	Container	1	Z1	Protection	1
P5	Tension rod	1	Z2	Lock ring	1
P6	Nylon ring	1	Z3	Piston rod	1
P7	Oil drain plug	1	Z4	Lock ring	1
P8	Gasket	1	Z5	Socket	1
P9	Vent valve	1	Z6	Nylon ring	1
P10	Screw	1	Z7	Sealing ring	1
P11	O-ring	4	Z8	Lock ring	1
P12	Pump foot	1	Z9	Nut	1
P13	Ball	2	Z10	Spring	1
P14	O-ring	1	Z11	Screw	1
P15	Drain valve	1	Z12	Protective cap	1
P16	Hydraulic pipe	1	Z13	Cylinder ring	1
P17	Coupling piece	1	Z14	Cylinder	1
P18	Protective cap for hose	1	Z15	Screw	1
P19	Steel ball	1	S1	Bolt	1
P20	Ball cap	1	S2	Lock ring	2
P21	Spring	1	S3	Mobile clamp jaw	1
P22	Screw	1	S4	Spring	1
P23	O-ring	1	S5	Fix clamp jaw	1
P24	Screw	1	S6	Piston	1
P25	Protective cap for screws	1	S7	Cup seal	1
P26	Screw	1	S8	O-ring	1

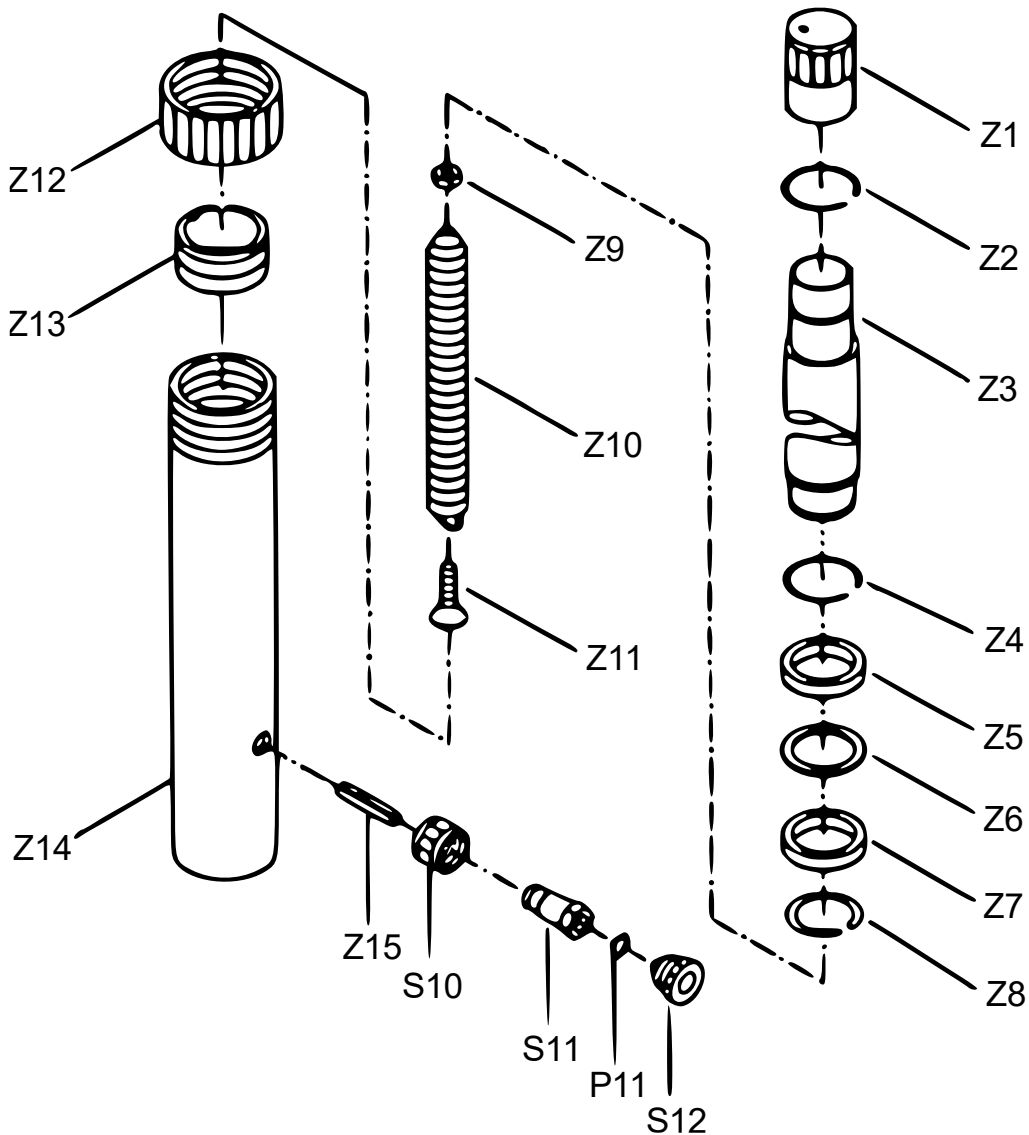
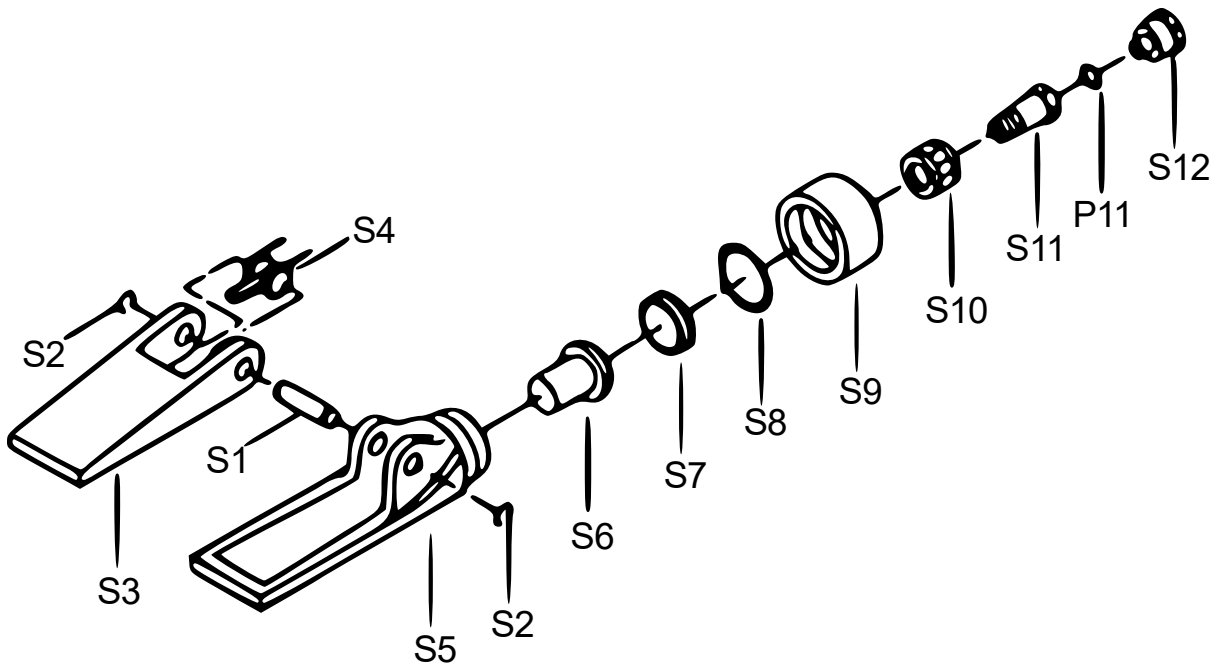


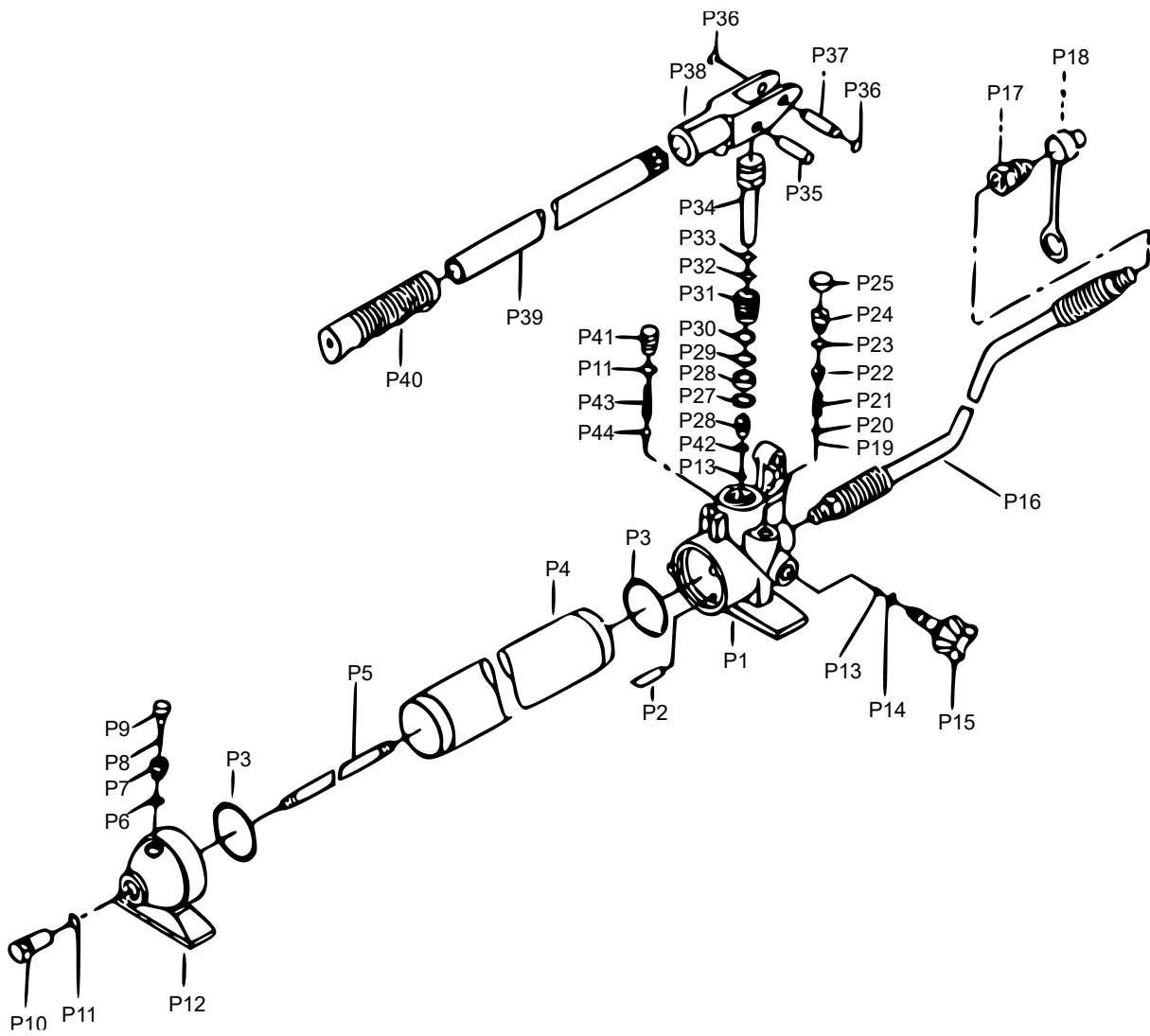
P27	Nylon ring	1	S9	End cup	1
P28	Sealing ring	1	S10	Cap nut	2
P29	O-ring	1	S11	Coupling bolt	2
P30	Nylon ring	1	S12	Dirt protection	2
P31	Pump piston rod	1			

Exploded views



Letter	Name	Letter	Name
A	Pump	C	Cylinder
B	Hydraulic spreader		







Troubleshooting

Immediately stop using this device if any of the following problems occur, otherwise personal injury may result. Any repair or replacement may only be carried out by a qualified person or an authorized service centre.

Problem	Possible cause	Solution
The lifter does not work despite correct use according to the operating instructions.	Steel ball immersed too long inside	Proceed as follows: a) Loosen the valve and pump 10–15×. b) Close the valve, pump again 10–15×. c) Repeat the steps a) and b) approx. 3× to fix this problem.
The lifter sinks unintentionally despite correct use according to the operating instructions.	Unlocked or locked valve	Pull/press the valve button strongly: a) Loosen the valve and pump 10–15×. b) Close the valve, pump again 10–15×. c) Repeat the steps a) and b) approx. 3× to fix this problem.
The plunger has a slope, the piston rod is curved despite correct use according to the operating instructions.	Incorrect connection or imbalance of the base	Immediately discontinue use; pay attention to the correct connection and securing of the base; make sure that the device is vertical.

Maintenance:

We recommend replacing the hydraulic oil after 30–35 uses. To do this, loosen the screw on the back of the cylinder to drain the old oil and fill in new oil (500 g + 5 g) with an oil gun. The recommended amount of oil is listed below. Slowly let in the oil. Tighten the screw slightly to relieve unwanted air and tighten the screw after that to reinstall the piston rod.

Important notice:

The reprint or reproduction, even of excerpts, and any commercial use, even in part, of this instruction manual require the written permission of WilTec Wildanger Technik GmbH.