

# User's manual

## Sheet Metal Bending Machine 61850



Illustration similar, may vary depending on model

Read and follow the operating instructions and safety information before using for the first time.

Technical changes reserved!

Illustrations, functional steps, and technical data may deviate insignificantly due to continuous further developments.

Updating the documentation

If you have suggestions for improvement or have found any irregularities, please contact us.



The information contained in this document may alter at any time without prior notice. No part of this document may be copied or otherwise duplicated without prior written consent. All rights reserved. WilTec Wildanger Technik GmbH cannot be held liable for any possible mistakes in this operating manual, nor in the diagrams and illustrations shown.

Although WilTec Wildanger Technik GmbH has made every possible effort to ensure that this operating manual is complete, accurate, and up-to-date, errors cannot be ruled out entirely.

If you have found an error or wish to suggest an improvement, we look forward to hearing from you.

Send us an e-mail to:

[service@wiltec.info](mailto:service@wiltec.info)

or use our contact form:

<https://www.wiltec.de/contacts/>

The most recent version of this manual in several languages can be found in our online shop:

<https://www.wiltec.de/docsearch>

Our postal address is:

WilTec Wildanger Technik GmbH  
Königsbenden 12  
52249 Eschweiler – Germany

To return your goods for exchange, repair, or other purposes, please use the following address. Attention! To allow for a trouble-free complaint or return, it is important to contact our customer service team before returning your goods.

Retourenabteilung  
WilTec Wildanger Technik GmbH  
Königsbenden 28  
52249 Eschweiler – Germany

E-mail: **service@wiltec.info**

Tel: +49 2403 55592-0

Fax: +49 2403 55592-15



## Introduction

Thank you for choosing to purchase this quality product. To minimise the risk of injury, we ask you to always take some basic safety precautions when using this product. Please read this operating manual carefully and make sure that you understand it.

Keep these operation instructions in a safe place.

## Safety instructions

### *Work area safety*

- Keep your working area clean and well illuminated. Untidy or dark working area invites accidents.
- Keep children and other persons away from your working area during operation of the bending machine. Distractions can lead to loss of control of the device.
- Do not expose the machine to rain or humidity.

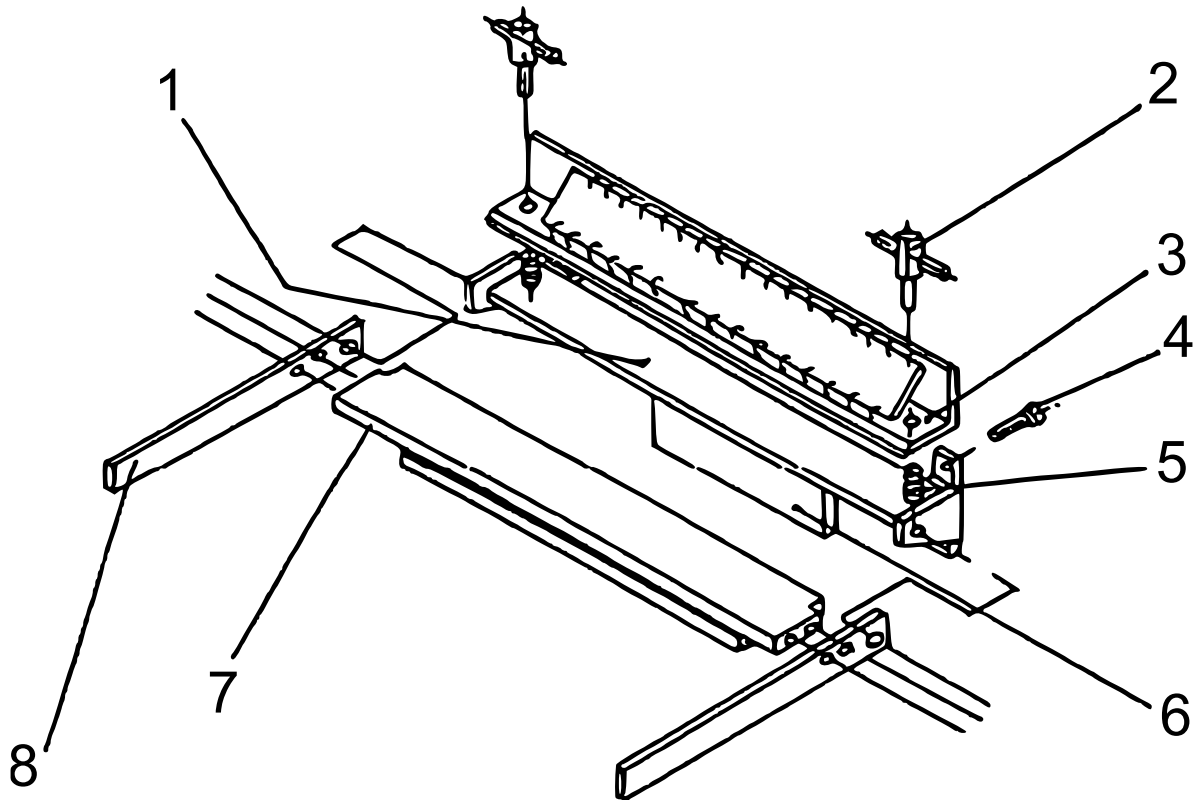
### *Personal safety*

- Stay alert and fully concentrate on what you are doing while you are using the bending machine. Do not use the device when being tired or under the influence of alcohol, drugs, or medicine. A moment of inattention, the small it be, might lead to serious injuries during use of the device.
- Wear a protective equipment. Always wear approved protective goggles. Wearing a safety equipment such as a dust mask, anti-slip safety shoes, a hardhat, or ear protection reduces the risk of accidents.
- Do not wear loose clothing or jewellery. Keep hair, clothing, and gloves away from moving parts. Loose clothing, jewellery, or long hair might get caught by moving parts.
- Keep your hands away from the clamping jaws.
- Always ensure a safe stand and keep your balance. This will allow a better control of the device in unforeseen situations.

### *Operation and maintenance*

- Do not apply too great a force when using the device. Do not apply additional leverage to clamp the clamping jaws. If necessary, use a bigger bending machine.
- Maintain the bending machine on a regular basis. Check if moving parts are badly positioned or jamming, if parts are broken, or if you detect other factors that could interfere with the correct operation of the machine. If parts of the bending machine are damaged, have them repaired before further use. Many accidents are caused by bad maintenance of tools or devices.

**Explosion view and assembly**



Nº	Name	Nº	Name
1	Lower beam	5	Spring
2	Toggle screw	6	Lug
3	Upper beam	7	Sheet metal bender
4	Screw	8	Handle

**Important Note:**

Reproduction and any commercial use (of parts) of this operating manual, requires a written permission of WilTec Wildanger Technik GmbH.