

Operation Manual

Air Impact Wrench and Accessories

61871



Illustration similar, may vary depending on model

Read and follow the operating instructions and safety information before using for the first time.

Technical changes reserved!

Due to further developments, illustrations, functioning steps, and technical data can differ insignificantly.

Updating the documentation

If you have suggestions for improvement or have found any irregularities, please contact us.



The information contained in this document may alter at any time without previous notice. It is prohibited to copy or spread any parts of this document in any way without prior written allowance. All rights reserved.

The WilTec Wildanger Technik GmbH cannot be held accountable for any possible mistakes in this operating manual, nor in the diagrams and figures shown.

Even though, the WilTec Wildanger Technik GmbH has undergone biggest possible efforts to ensure that the operating manual is complete, faultless, and up to date, mistakes cannot be entirely avoided.

If you should find a mistake or wish to make a suggestion for improvement, we look forward to hearing from you.

Send an e-mail to:

service@wiltec.info

or use our contact form:

<https://www.wiltec.de/contacts/>

The most recent version of this manual in various languages can be found in our online shop via:

<https://www.wiltec.de/docsearch>

Our postal address is:

WilTec Wildanger Technik GmbH
Königsbenden 12
52249 Eschweiler
Germany

To return orders for exchange, repair, or other purposes, please use the following address. Attention! To allow for a smooth execution of your complaint or return, it is important to contact our customer service team before returning the goods.

Returns Department
WilTec Wildanger Technik GmbH
Königsbenden 28
52249 Eschweiler

E-mail: **service@wiltec.info**

Tel: +49 2403 55592-0

Fax: +49 2403 55592-15



Introduction

Thank you for purchasing this quality product. **To minimise the risk of injury we urge that our clients take some basic safety precautions when using this device. Please read the operation instructions carefully and make sure you have understood its content.**

Keep these operation instructions safe.

Important safety instructions

WARNING! When you use tools, basic precautions should always be followed.



Risk of fire and injuries!

Work area safety

- Keep the work area tidy and well lit. Untidy benches and dark areas increase risk of electric shock, fire and injury to persons.
- Do not operate tool in explosive atmospheres, such as in the presence of flammable liquids, gases, or dust.
- Keep bystanders, children, and visitors away while operating the tool. Distractions may result in personal injury and/or injury of others.

Personal safety

- Always wear eye protection. Operator and others within work area should always wear approved safety goggles with side shields. Eye protection is used to guard against flying fasteners and debris, which may cause severe eye injury.
- Always wear hearing protection when using the tool. Extended exposure to high intensity noise may cause hearing loss.
- Use safety equipment. A dust mask, non-skid safety shoes and a hard hat must be used for the applicable conditions.
- Do not wear loose fitting clothing or jewellery. Use a helmet for long hair. These items can get caught in moving parts, causing serious personal injury.
- Stay alert, watch what you are doing and never operate the tool while being tired or under the influence of drugs, alcohol, or medicine. A moment of inattention while operating the tool increases the risk of injury to persons.
- Remove adjusting keys and wrenches before switching the tool on. A wrench or a key that is left attached to a rotating part of the tool increases the risk of injury to persons.
- Always keep proper footing and balance. Do not use on a ladder or an unstable support. Proper footing and balance enable better control of the tool in unexpected situations.
- Make sure the hose is free of obstructions or snags. Entangled or snarled hoses can cause loss of balance or footing and may become damaged resulting in possible injury.
- Do not attach the hose or tool to your body. Attach the hose to the structure to reduce the risk of loss of balance if the hose shifts.
- Avoid unintentional starting. Be sure the switch is off before connecting the air supply. Do not carry the tool with your finger on the switch or connect the tool to the air supply when switched on.
- Wash hands after handling.

Tool use and care

- Get to know this tool. Read the manual carefully, learn its application and limitations, as well as the specific potential hazards related to this tool.



- Do not force the tool. Use the correct tool for the application. The correct tool will do the job better and safer at the rate for which it has been designed for.
- **WARNING!** Disconnect the tool from the air source before making any adjustments, changing accessories or before storing the tool. Such precautionary measures reduce the risk of injury to persons.
- Check for misalignment or binding of moving parts, breakages and any other conditions that may affect the tool in its operation and safety. Damaged tools must be repaired before using them. Many accidents are caused by poorly maintained tools. There is a risk of bursting if the tool is damaged.
- Store the tools in a secure place when not in use and keep them out of reach of children and other untrained persons. A tool is dangerous in the hands of untrained users.
- Holding a work piece by hand or against the body is unstable and may lead to loss of control.
- Keep the tool and its handle dry, clean, and free from oil and grease. Always use a clean cloth when cleaning it. Never use brake fluids, petrol, petroleum-based products, or any strong solvents to clean your tool.
- Do not use the tool as hammer.
- Never use petrol or flammable liquids to clean the tool. Never use the tool in the presence of flammable liquids or gases. Vapours can be ignited by a spark and cause an explosion that will result in death or serious personal injury.
- Do not remove or manipulate the trigger. Never cause the trigger lock to become inoperable. Do not operate any tool which has been modified in any way. Death or serious personal injury can be the result.
- Never use the tool if the switch does not work. Any tool that cannot be controlled by the switch is dangerous and must be repaired before using it again.
- Always fit the tool with a fitting or hose coupling on or near the tool that all compressed air is discharged at the same time when the fitting or hose coupling is disconnected. Do not use a check valve or any other fitting that allows the air to remain within the tool. Death or serious personal injury might be the result.
- Never carry the tool by the air hose or pull the hose to move the tool away from a compressor. Keep hoses away from heat, oil, and sharp edges. Replace any hose that is damaged, weak, or worn. Otherwise, this might result in personal injury or damage to the tool.
- Do not drop or throw the tool. Dropping or throwing the tool can result in damage that will make the tool unusable or unsafe. If the tool has been dropped or thrown, examine the tool closely for bent, cracked or broken parts or any air leaks. If the tool has any damages, it must be repaired before being used again to avoid taking serious injuries.
- Clean and check all air supply hoses and fittings before connecting the tool to an air supply. Replace any damaged or worn hoses or fittings. This will reduce tool performance or its durability.
- Do not use the tool if it leaks air or does not function properly.
- Do not operate the tool if it does not contain a legible warning label.

Maintenance

- Use only accessories that are allowed by the manufacturer.
- When servicing a tool, only use original spare parts.
- Only use supplied lubricants specified by the manufacturer.
- Tool service must only be performed by the manufacturer or an authorized service partner.

Operation

- The amount of actual torque may vary depending on the cleanliness and condition of threads and other factors.
- The warnings and precautions discussed in this manual cannot cover all possible conditions and situations that may occur. Always be aware and cautious while working with the tool.
- Only use it with accessories that are rated to handle the forces exerted by this tool during operation. Other accessories which are not designed for the generated forces may break and forcefully launch pieces.
- Attach all accessories properly to the tool before connecting the air supply. A loose accessory may detach or break during operation.



- Obey the manual for the air compressor used with this power tool.
- Install an in-line shut-off valve to allow immediate control over the air supply in an emergency, even if a hose is ruptured.
- Use this tool with both hands only. Using tools with only one hand can result in loss of control.
- Do not lay down the tool until it has come to a complete stop. Moving parts can grab the surface and pull the tool out of your control.
- Always handle the tool with care:
 - Respect the tool as a working implement.
 - Never pull the trigger unless nose is directed toward the work.
 - Keep others in a safe distance from the tool while the tool is in operation as accidental actuation may occur possibly causing injury.

Air supply and connections

- Do not use any type of reactive gases like oxygen carbon dioxide and combustible gases as a power source. Use filtered, lubricated, regulated compressed air only. Use of a reactive gas instead of compressed air may cause the tool to explode which will cause death or serious personal injury.
- Use only a pressure-regulated compressed air source to limit the air pressure supplied to the tool. The regulated pressure must not exceed 6 bar (90 psi). If the regulator fails, the pressure must not exceed 6 bar (90 psi). The tool could explode which will cause death or serious personal injury.
- Always disconnect air source
 - before making adjustments,
 - when servicing the tool,
 - when the tool is not in use,
 - when moving the tool to a different work area as accidental actuation may occur causing injury
- Never connect the tool to an air source that may exceed 6 bar (90 psi). Over-pressurising the tool may result in bursting, abnormal operation, breakage of the tool as well as serious personal injury. Use only clean, dry, regulated compressed air at the rated pressure or within the rated pressure range as marked on the tool. Always verify prior to using the tool that the air source has been adjusted to the rated air pressure or within the rated air-pressure range.

Technical data

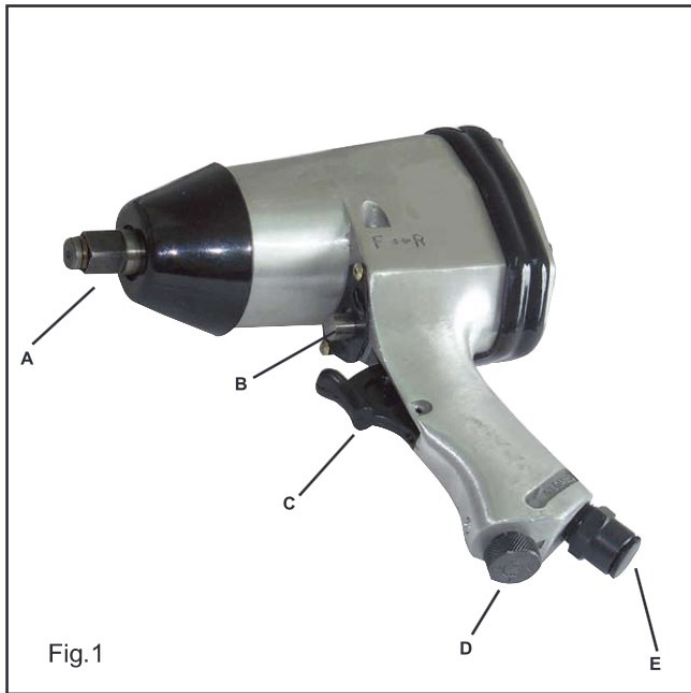
Square drive (inch)	1/2
Idle speed (1/min)	7000
Max. torque (Nm)	312
Air consumption (1/min)	approx. 140
Air inlet (inch)	1/4
Max. air pressure (bar)	6
Total weight (kg)	16

Accessories

- 1 × air pressure gun
- 1 × blow-out gun
- 1 × 1/2" impact wrench
- 1 × 1/4" die grinder
- 1 × air pressure hose (5 m × 5 mm × 8 mm)
- 1 × collet chuck
- 5 × mounted 6 mm (1/4") point
- 5 × mounted 3 mm (1/8") point

- 3 × socket (14 mm, 17 mm, 19 mm)
- 1 × quick coupler
- 4 × quick coupling nipple for air inlet
- 2 × spanner
- 1 × plastic transport case

Main components

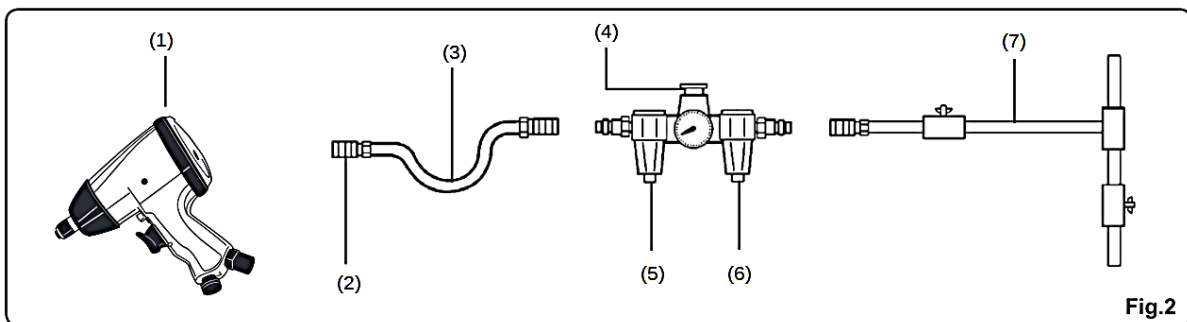


Letter	Name
A	Anvil
B	Control valve
C	Trigger
D	Air regulator
E	Air inlet

Operating procedures

Setting up the air source

- The ½" air impact wrench is designed to operate on clean, dry, compressed air, regulated at 6 bar (90 psi). The preferred system would include a filter, a pressure regulator and an automatic oiler located as close to the tool as possible, ideally within 4.5 m (15 ft). Do not use bottled air or gases.



No	Name	No	Name
1	Air impact wrench	5	Oiler
2	Quick coupler	6	Filter



3	Air hose	7	Air connector
4	Regulator		

- All compressed air contains moisture and other contaminants that can harm the internal components of the tool. An air filter will remove most of these and significantly extend the life of the tool. Ensure the in-line oiler has sufficient oil. If an in-line oiler is not available, place 2 drops of oil into the air inlet of the tool at the beginning of each workday. More than this will be expelled from the exhaust of the tool during using (Fig. 3).
- Air fitting: The 1/2" air impact wrench should be equipped with a 1/4" NPD male quick connector (not included). To prevent accidental cycling even though disconnected, the tool must always be connected to the air supply in a way that all air pressure within the tool is released when the coupling is disconnected.

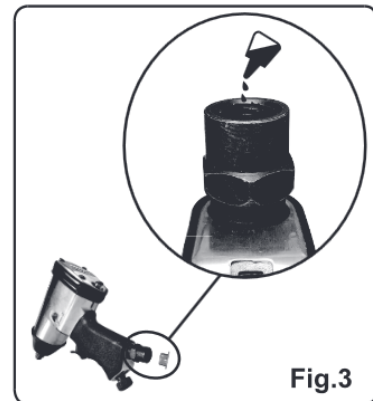


Fig.3

CAUTION:

- **All air pipe components (including hoses, pipe, connectors, filters, regulators etc.) must be rated for a working pressure of 6 bar (90 psi).**
- **Disconnect the tool from the air supply before performing maintenance, leaving the work area, moving the tool to another location, or handing it to another person.**

Preparing the tool

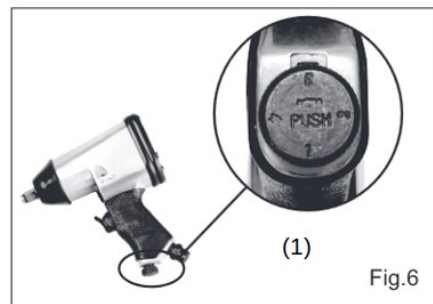
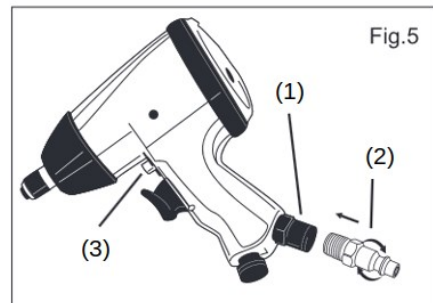
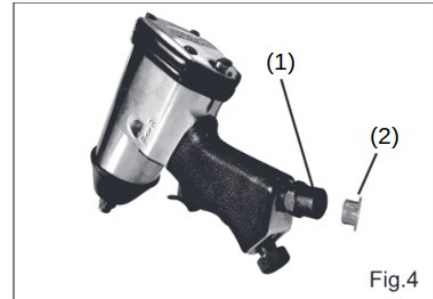
- Drain water from the air compressor tank and any condensation from air lines. (Please refer to the operation manual of the air compressor.)
- Lubricate the tool. (Please refer to the maintenance section in this manual.)
- Select the necessary impact sockets. The sockets must match the size of the drive on the air impact wrench.
- Connect air impact wrench to the air source using the recommended hose size.

CAUTION:

- **Always keep the tool pointed away from yourself and any other person.**
- **Never use a tool that leaks air or needs repair.**

Operating the tool

- Remove the plastic air inlet protective cap (**fig. 4, 2**) from the air inlet (**Fig. 4, 1**) as shown.
- Prepare a ¼" male plug (**Fig. 5, 2**) (not included) by applying sealant tape to the threading, wrapping clockwise. Screw the threaded male air plug by hand into the air inlet (**Fig. 5, 1**) as shown and tighten it with a wrench (not included) for an airtight connection. **Note: Do not over-tighten! Sealant tape must be used on this connection.**
- Push the control valve (**Fig. 5, 3**) forward so that the end of the valve protrudes out above the trigger for a clockwise ("forward") tool operation.
- Push the control valve back so that the end of the valve protrudes from the back of the housing for counter-clockwise ("reverse") tool operation.
- Adjust the air flow by pushing down the air regulator (**Fig. 6, 1**) and turning the knob from positions "1" (lowest amount of air flow) to "4" (highest amount of air flow), aligning the desired number setting with the recessed arrow.
- Push and snap the required ½" drive impact socket (not included) onto the anvil.



CAUTION:

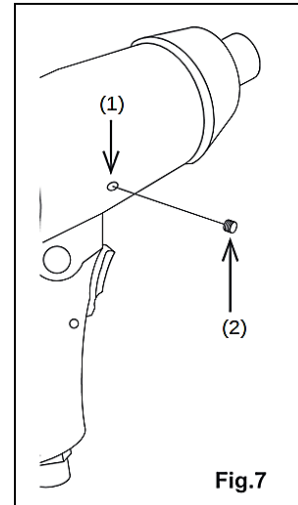
- **Always keep the tool pointed in a safe direction.**
- **Only use impact rated accessories with this tool. Other accessories may shatter, chip or crack during operation.**
- **Clean and inspect the tool daily. Carefully check for proper operation of trigger and safety mechanism. Do not use the tool unless both the trigger and safety mechanism are functional, if the tool is leaking air or needs any other repair.**

Regular maintenance

- Clean and inspect the tool daily. Make sure the tool is disconnected from the air supply.
- Blow the tool clean with compressed air and inspect for wear and damage. Use non-flammable cleaning solutions to wipe the exterior of the tool, only if necessary. **DO NOT SOAK** the tool with cleaning solutions. Such solutions can damage internal parts.
- Inspect the trigger and the safety mechanism to ensure the system is complete and functional. Check for loose or missing parts as well as parts that may be stuck.
- Keep all screws tight. Loose screws may cause personal injury.
- Place two or three drops of pneumatic oil (included) into the air inlet of the tool daily.



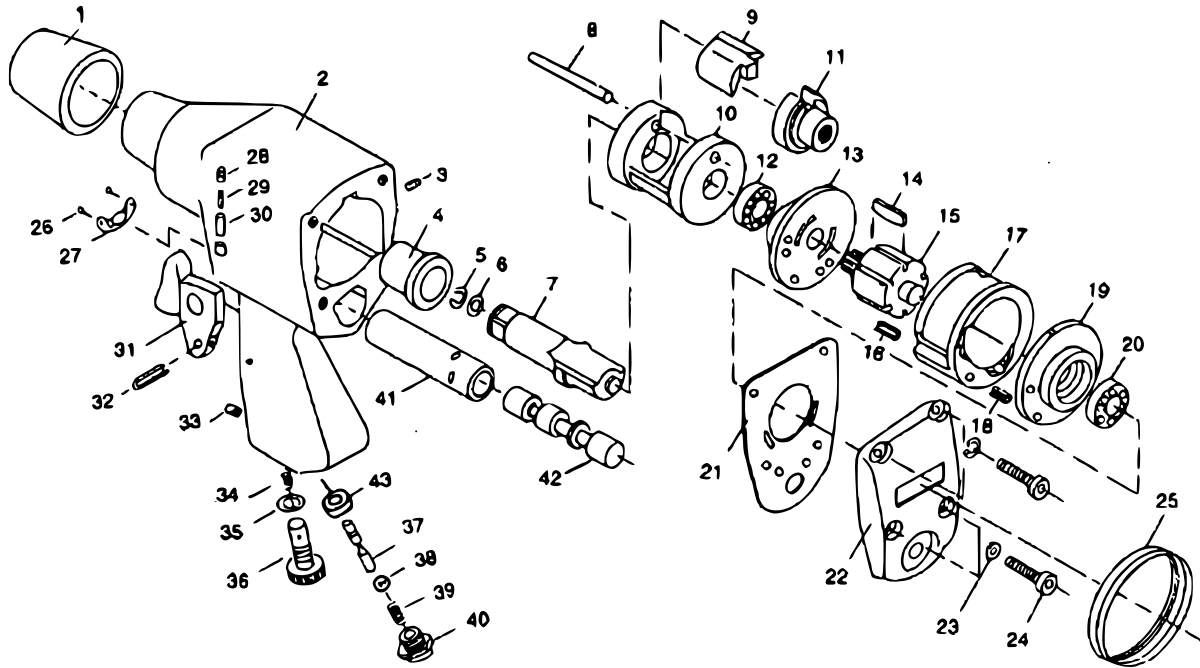
- **BEFORE EACH USE** inspect the general condition of the tool. Check for:
 - loose hardware or housing,
 - misalignment or binding of moving parts
 - cracked or broken parts,
 - any other condition that may affect its safe condition
- **Daily – air supply maintenance:** Every day, maintain the air supply according to the component manufacturers’ instructions. Maintain the oil level of the lubricator. Drain the moisture filter regularly. Performing routine air supply maintenance will allow the tool to operate more safely and will also reduce wear on the tool.
- **Weekly – lubrication:** Add a high-quality machine oil to the oil inlet (**Fig. 7, 1**) by removing the oil screw (**Fig. 7, 2**).
- **Quarterly (every 3 months) – tool disassembly, cleaning, and inspection:** Have the internal mechanism cleaned, inspected, and lubricated by a qualified technician.



Troubleshooting

Problem	Possible causes	Solutions
Decreased output	Not enough air pressure and/or air flow	Check for loose connections and make sure that air supply is providing enough air flow at required pressure to the air inlet of the tool. Do not exceed the maximum air pressure.
	Obstructed trigger	Clean around trigger to ensure free movement.
	Incorrect or not enough lubrication	Lubricate using air tool oil according to prior instructions.
	Blocked air inlet screen (if equipped with)	Clean air inlet screen of build-up.
	Air leaking from loose housing	Make sure housing is properly assembled and tight.
	Mechanism contaminated	Let a qualified technician clean and lubricate the mechanism. Install in-line filter in air supply as stated in “Setting up the air supply.”
Severe air leakage (slight air leakage is normal, especially on older tools)	Cross-threaded housing components	Check for incorrect alignment and uneven gaps. If cross-threaded, disassemble and replace damaged parts before using the tool.
	Loose housing	Tighten the housing assembly. If housing cannot be tightened properly, internal party might be misaligned. A technician needs to disassemble the tool, align parts, and re-assemble.
	Damaged valve or housing	Replace damaged components.
	Dirty, worn, or damaged valve	Clean or replace valve assembly.
Housing heats up during use.	Incorrect or not enough lubrication	Lubricate using air tool oil according to prior instructions.
	Worn parts	Let a qualified technician inspect the internal mechanism and replace parts as needed.

Explosion view and parts list



No	Name	No	Name	No	Name
1	Protecting rubber	16	Pin	31	Trigger
2	Housing	17	Cylinder	32	Pin
3	Screw	18	Pin cylinder	33	Screw
4	Anvil bushing	19	Rear end plate	34	Spring
5	Anvil collar and seal	20	Ball bearing	35	O ring
6	O ring	21	Rear gasket	36	Air regulator
7	Anvil (1/2" sq)	22	Rear cover	37	Valve stem
8	Hammer pin	23	Washer	38	Steel ball
9	Hammer dog	24	Screw	39	Spring
10	Hammer cage	25	Rubber	40	Hose adapter
11	Drive cam	26	Screw	41	Valve sleeve
12	Ball bearing	27	Control valve	42	Reverse valve
13	Front end plate	28	Screw	43	Bushing
14	Rotor blade	29	Spring		
15	Rotor	30	Pin		

Warning! Repairs must only be made by an authorized service partner or the manufacturer.
Do not open or disassemble the power tool.

Important notice:

The reprint or reproduction, even of excerpts, and any commercial use, even in part, of this instruction manual require the written permission of WilTec Wildanger Technik GmbH.