

Operation Manual

Fruit Shredder 61903

toboli



Illustration similar, may vary depending on model

Read and follow the operating instructions and safety information before using for the first time.

Technical changes reserved!

Due to further developments, illustrations, functioning steps, and technical data can differ insignificantly.

Updating the documentation

If you have suggestions for improvement or have found any irregularities, please contact us.



The information contained in this document may alter at any time without previous notice. It is prohibited to copy or spread any parts of this document in any way without prior written allowance. All rights reserved.

The WilTec Wildanger Technik GmbH cannot be held accountable for any possible mistakes in this operating manual, nor in the diagrams and figures shown.

Even though, the WilTec Wildanger Technik GmbH has undergone biggest possible efforts to ensure that the operating manual is complete, faultless, and up to date, mistakes cannot be entirely avoided.

If you should find a mistake or wish to make a suggestion for improvement, we look forward to hearing from you.

Send an e-mail to:

service@wiltec.info

or use our contact form:

<https://www.wiltec.de/contacts/>

The most recent version of this manual in various languages can be found in our online shop via:

<https://www.wiltec.de/docsearch>

Our postal address is:

WilTec Wildanger Technik GmbH
Königsbenden 12
52249 Eschweiler
Germany

To return orders for exchange, repair, or other purposes, please use the following address. Attention! To allow for a smooth execution of your complaint or return, it is important to contact our customer service team before returning the goods.

Returns Department
WilTec Wildanger Technik GmbH
Königsbenden 28
52249 Eschweiler

E-mail: **service@wiltec.info**

Tel: +49 2403 55592-0

Fax: +49 2403 55592-15

Introduction

Thank you for purchasing this quality product. **To minimise the risk of injury we urge that our clients take some basic safety precautions when using this device. Please read the operation instructions carefully and make sure you have understood its content.** Keep these operation instructions safe.

This will also ensure that the garden shredder will give you long and satisfactory service.

Danger and information signs



Read the instructions carefully. Be familiar with the controls and the proper use of the fruit shredder.



Read the user's manual before using the machine.



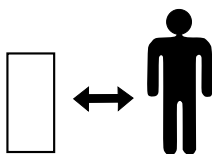
Full-face protection must be worn.



Ear protection and eye protection must be worn.



Safety gloves must be worn.



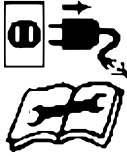
ALWAYS keep people at a safe distance from the work area, especially whilst operating the machine. Children should not be allowed in the work area.



Keep bystanders away from the working area.



NEVER use power tools in damp or wet locations or expose them to rain.



Switch off: Remove plug from the mains before adjusting, cleaning, or if the cable is entangled. Also switch off when the shredder is going to be unattended.



NEVER put your hands into hopper near the rotating blades.

Safety precautions

- Never allow persons unfamiliar with these instructions to use the fruit shredder.
- Local regulations may restrict the age of the operator – not to be operated by children.
- Do not operate this fruit shredder near bystanders. The operator or user is responsible for accidents or hazards occurring to other people or other people's property.
- Do not allow hands, any other part of the body, or clothing inside the housing, the hopper, or near any moving part.
- Always wear safety glasses while operating the fruit shredder.
- Avoid wearing loose-fitting clothing or jewellery. They might be caught by moving parts and cause serious injury.
- Only operate the fruit shredder on a firm and level surface.
- Before starting the fruit shredder, check that all screws, nuts, bolts, sieves, and other fasteners are properly secured. Replace damaged or unreadable warning and operating labels.
- Before starting the fruit shredder, make sure that the housing is empty.
- Keep your face and body away from the feed opening.
- Do not lean over too far. Always keep proper balance and footing. Never stand at a higher level than the base of the fruit shredder when feeding material into it.
- Always stand clear of the discharge area when operating the fruit shredder.
- When feeding material into the fruit shredder, be extremely careful that no pieces of metal, rocks, bottles, cans, or other foreign objects are included.
- **ALWAYS** remove the plug from the socket,
 - whenever you leave or transport the fruit shredder;
 - before clearing a blockage;
 - before checking, cleaning, or working on the fruit shredder;
 - after striking a foreign object, inspect the fruit shredder for damage and make repairs if necessary;
 - if the fruit shredder starts to vibrate abnormally or makes any unusual noise (check immediately).
- If the cutting mechanism strikes any foreign objects or if the fruit shredder should start making unusual noise or vibration,
 - inspect for damage;
 - replace or repair any damaged parts;
 - check for and tighten any loose parts.
- Do **not** attempt to repair the fruit shredder unless you are competent to do so. Do not allow processed material to build up in the discharge area; this may prevent proper discharge and can result in kickback of material through the feed opening.

Electric safety

- Connect the mains cable to a standard 230 V (50 Hz) electrical supply. A damaged plug must be disposed of to avoid a possible shock hazard and should never be inserted into a 13 A socket elsewhere. Your fruit crusher is double insulated for safety and requires no earth connection. The operating voltage is 230 V with a 50 Hz frequency.
- *Extension cable:* The type of cable used must be 2-core double insulated with a cross section of 3×1.0 mm². In case of uncertainty, please consult an electrician.

Operation

- With the machine standing on firm level ground, standing on a board, if necessary, plug the machine into the mains supply, via a residual current device (RCD).
- Place a collecting container such as a barrel or a box below the outlet port to collect crushed fruit. Then start the machine by pressing the ON/OFF to ON. When the machine is running at full speed, proceed to feed material into the hopper. **DO NOT** force it!
- **IMPORTANT:**
 - Please start the machine **FIRST**, and feed fruit after machine starts running. It is very **IMPORTANT!** The cutter blades will pull the material into the machine.
 - **NEVER** push material into the hopper with your hands.
 - The material must be of a size to easily enter the holes in the hopper.
 - Should the machine become clogged and stop delivering chippings, switch it off **IMMEDIATELY** and disconnect the plug from the mains supply.
- Using industrial quality gloves any material in the chute needs to be removed. Take great care to avoid contact with the cutter blades and use a stick where necessary.
- Ensure the cover is properly secured before plugging it to the mains supply or restarting the machine again.

Cleaning and maintenance

Cleaning



1. Remove the bolts (2) from the main body (1).

2. Remove the main body (1) and clean it.





3. Remove the rotating plate fixing the cutter plate. Then take the cutter plate (10) from the base plate (15) and clean it.

Please watch out cleaning the cutting blades which can cause injuries due to their sharpness. **ALWAYS** ensure that the machine is switched OFF and disconnected from the mains supply before carrying out any cleaning or maintenance operations.

Reassemble the fruit crusher in reverse order.

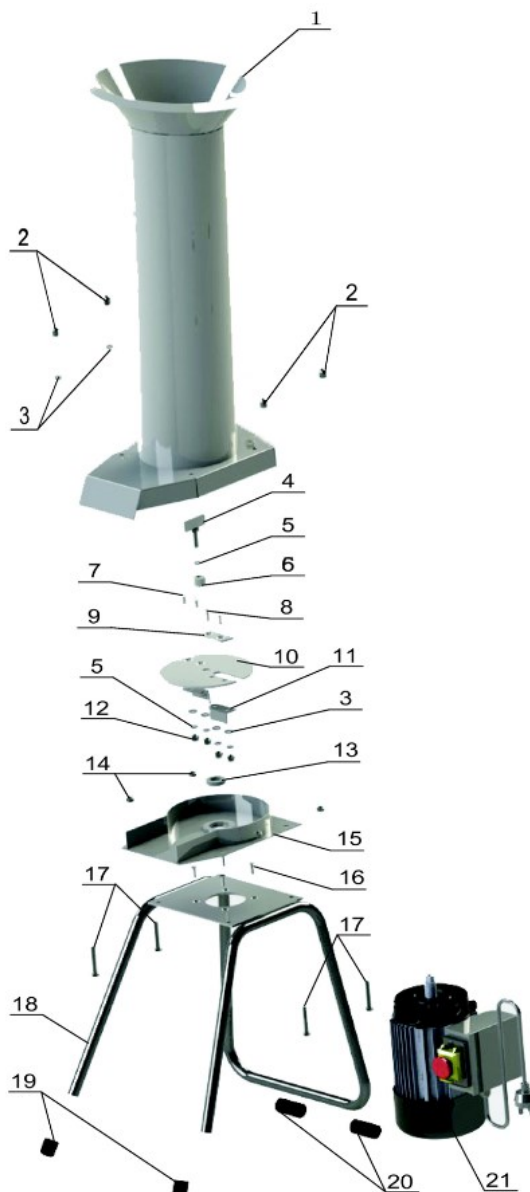
Maintenance

- Dry the machine after cleaning to prevent it from rusting. Lightly edible antirust oil should be put on all surfaces to prevent rusting if the machine must be stored for longer periods of time.
- Ensure that the machine is clean and free of corrosion by the malic acid found in juice.

Technical data

Input voltage (V)	230	
Input frequency (Hz)	50	
Power (W)	1100	
Max. rotation speed (1/min)	2800	
Length of cable (m)	1.6	
Protection class	IP44 (splashproof)	
Max. shredding performance (kg fruit/h)	1000	
Weight (kg)	27	
Dimensions (mm)	Product	380×320×1280
	Hopper	970×Ø170
	Blades	66×30×4

Exploded view and parts list



Nº	Name	Qty.	Nº	Name	Qty.
1	Main body	1	12	Loose-proof nut M8	4
2	M8 cap nut	4	13	Oil seal	1
3	8 mm flat washer	8	14	Nut M8	4
4	Rotated plate	1	15	Base plate	1
5	8 mm spring washer	5	16	Screw M6×20	4
6	Pressing bush of cutter plate	1	17	Outside hex bolt M8×50	4
7	Inner hex bolt M8×16	2	18	Stand	1
8	Inner hex bolt M8×20	2	19	Front foot cover	2
9	Blade	1	20	Back foot cover	2
10	Knife plate	1	21	Motor	1
11	Damper	2			

Disposal regulations

EU guidelines regarding the disposal of scrap electric appliances (WEEE, 2012/19/EU) were implemented in the law related to electrical and electronic equipment and appliances.

All WiTec electric devices that fall under the WEEE regulations are labelled with the crossed-out wheeled waste bin logo. This logo indicates that this electric equipment must not be disposed with the domestic waste.

The company WiTec Technik GmbH has been registered in the German registry EAR under the WEEE-registration number DE45283704.

Disposal of used electrical and electronic appliances (intended for use in the countries of the European Union and other European countries with a separate collection system for these appliances).

The logo on the article or on its packaging points out that this article must not be treated as normal household waste but must be disposed to a recycling collection point for electronic and electrical waste equipment. By contributing to the correct disposal of this article you protect the environment and the health of your fellow men. Environment and health are threatened by inappropriate disposal.



Material recycling helps reduce the consumption of raw materials.

Additional information on recycling this article can be provided by your local community, municipal waste disposal facilities, or the store where you purchased the article.

Address:
WiTec Wildanger Technik GmbH
Königsbenden 12 / 28
D-52249 Eschweiler

Important notice:

The reprint or reproduction, even of excerpts, and any commercial use, even in part, of this instruction manual require the written permission of WiTec Wildanger Technik GmbH.