

Operation Manual

Mobile Metal Band Saw

61917



Illustration similar, may vary depending on model

Read and follow the operating instructions and safety information before using for the first time.

Technical changes reserved!

Due to further developments, illustrations, functioning steps, and technical data can differ insignificantly.

Updating the documentation

If you have suggestions for improvement or have found any irregularities, please contact us.



The information contained in this document may alter at any time without previous notice. It is prohibited to copy or spread any parts of this document in any way without prior written allowance. All rights reserved.

The WilTec Wildanger Technik GmbH cannot be held accountable for any possible mistakes in this operating manual, nor in the diagrams and figures shown.

Even though, the WilTec Wildanger Technik GmbH has undergone biggest possible efforts to ensure that the operating manual is complete, faultless, and up to date, mistakes cannot be entirely avoided.

If you should find a mistake or wish to make a suggestion for improvement, we look forward to hearing from you.

Send an e-mail to:

service@wiltec.info

or use our contact form:

<https://www.wiltec.de/contacts/>

The most recent version of this manual in various languages can be found in our online shop via:

<https://www.wiltec.de/docsearch>

Our postal address is:

WilTec Wildanger Technik GmbH
Königsbenden 12
52249 Eschweiler
Germany

To return orders for exchange, repair, or other purposes, please use the following address. Attention! To allow for a smooth execution of your complaint or return, it is important to contact our customer service team before returning the goods.

Returns Department
WilTec Wildanger Technik GmbH
Königsbenden 28
52249 Eschweiler

E-mail: **service@wiltec.info**

Tel: +49 2403 55592-0

Fax: +49 2403 55592-15



Introduction

Thank you for purchasing this quality product. **To minimize the risk of injury we urge that our clients take some basic safety precautions when using this device. Please read the operation instructions carefully and make sure you have understood its content.**

Keep these operation instructions safe.

When unpacking the machine, make sure that it is in perfect condition and the package contains the parts described; in case of any damages or missing parts, do not work with the product and immediately contact the manufacturer or an authorised service partner.

- The purpose of this manual is to provide necessary information for competent safe use of the device.
- This information is the result of continuous, systematic data processing and technical tests recorded and validated by the manufacturer in accordance with internal procedures to ensure safety and quality of information: EN89/392, EN60204-1, CEI110-8, IEC801, EN202-2, EN418, prEN614-1.
- The following information is intended exclusively for specialised users, capable of interacting with the product with the utmost safety for people, the machine, and environment. Any user should be able to interpret basic diagnostics of problems and malfunctions and perform simple checks and maintenance in full compliance with the instructions given in the following pages. They must comply with common health and safety regulations including the mentioned ones within this manual.
- The document does not examine in depth the topics of disassembly and extraordinary maintenance, as these operations must always be carried out by the manufacturer or authorised service partner only.
- For a proper use of the product, it is essential to ensure that the manual remains legible and well preserved for future reference. If having any question, always contact an authorised service partner before working with the machine again.
- Before any intervention to the machine or its parts, the instructions within this manual have to be read very carefully.
- If the machine is used by more than one operator, each one must adhere to the following instructions.
- The manufacturer and its service partners decline any responsibility for damage to persons, things, or the machine itself arising from its incorrect use resulting from not following the safety instructions stated within this manual.
- This instructions manual must be stored in a safe and accessible place for future reference.

General precautions

- Always make sure that the required safety and operating standards are respected taking note of environmental conditions like temperature, humidity, lighting, vibrations, suspended dust and, general appropriateness of the working area.
- The saw may only work in areas where there is no risk of explosion or fire.
- Before using the device, make sure that the surface where the machine will be placed is flat, sufficiently sturdy, and ergonomic. Due to this, we recommend the use of a workbench.
- Always make sure that the workpiece is tightly clamped before starting to work with the machine. Otherwise, there is a risk of injury. The user must make sure that no dangerous situations may arise.
- Do not remove or damage the information plates on the machine. The information contained must be always kept recognisable and legible.
- The use of non-original spare parts or any kind of slight modification to the machine will exempt the manufacturer or seller from any responsibility regarding the warranty.
- It is strictly forbidden to modify safety equipment or devices of the machine.
- Resulting waste throughout the working process must be disposed of in compliance to current regulations.



- Any maintenance operations, except of those specifically described within this manual, must only be carried out by the manufacturer or an authorised service partner.

Equipment

The mobile belt saw is supplied ready to use, packed in a cardboard box, and protected by a sheet of cardboard. The packaging material must be disposed of according to current environmental protection regulations. The machine is initially supplied with the instruction manual.

Note:

- The belt saw has been designed and manufactured for bench use. The metal parts being cut may have a maximum diameter or thickness of 105 mm.
- Any other use is excluded by the manufacturer who shall be exempt from any liability for damage to people, animals, or the machine itself caused by improper use.
- Do not run the machine for a longer period when no parts must be cut.
- Do not cut hardened or cemented steel parts.

Machine

Identification

- The essential information for identifying the product includes:
 - Manufacturer,
 - Serial number,
 - Model,
 - Year of manufacture,
 - Voltage (V),
 - Power (kW),
 - Frequency (Hz),
 - Amperage (A),
 - Weight (kg).
- The EC approval plate is located as shown in fig. 2, ref. A. It is strictly forbidden to remove or damage the plates. Immediately contact the manufacturer or an authorised service partner if this should happen.
- For any information and/or technical explanations regarding the machine, always indicate:
 - Model,
 - Serial number,
 - Item number (of seller),
 - Order number.

Description

- The portable bench saw consists of a fixed bench, pivoting head (including a screw lock for angle sawing), speed regulator, piece clamp, and operator tool.
- The machine may be used for dry cutting (from 0° to 45° left) of materials compatible with the specifications listed below always in compliance with environmental conditions and limitations recommended by the manufacturer as well as current health and safety regulations.

CAUTION: The description specifies the use for which this product has been designed and built. Any other use or failure to comply with the technical parameters listed below may lead to hazardous situation including the risk of injury to people and property.



Main components (see “Figures and illustrations” below)

No	Name	No	Name
1	Base	9	Cutting speed regulator
2	Transport locking	10	Blade guide lock lever
3	Clamp crank	11	Blade guide
4	Pierce clamp	12	Belt saw
5	Machine body	13	Electric motor
6	Saw tension cover	14	90° rotation unit
7	Grip	15	Power cord
8	On/off switch	16	Piece holder

Technical specifications

Sizes	Total size (L×B×H) (mm)	620 × 530 × 580
	Saw band (mm)	1140 × 13 × 0.65
	Saw blade (teeth/inch)	14
Input voltage (V)		220
Frequency (Hz)		50
Current (A)		5
Power (W)		1500
Isolation class		2
Velocity (continuously variable) (m_{min})		20–70
Max. cutting depth (mm)		105
Cutting capacity (mm)	round	100 (with 90°), 55 (with 45°)
	square	100 × 105 (with 90°), 55 × 60 (with 45°)
Weight (kg)		18

Technical characteristics

- Blade drive pulleys: on bearings
- Transmission: treated, tempered steel gears
- Switch with safety device
- Steel clamp
- Automatic blade stretcher
- Cutting capacity: profiled material

Lifting and moving

The saw may be lifted, carried, and moved by hand in compliance with the instructions below:

- Fasten the blade arm in its end position using the mechanical lock provided (Fig. 2, ref. 2).
- Make sure that it is properly fastened, grasp the centre of the arm (Fig. 2B), and lift it carefully.



Caution: The machine must only be lifted and carried when it is free of materials or working pieces always making sure that it has been disconnected from all power sources. In any case, always comply with current health and safety regulations.

Commissioning

First steps

It is essential to determine size measurements and placement prior to installation to ensure safe placement, running, and possible emergency actions within the surrounding area. These conditions should be respected beginning with the preliminary stages before cutting begins.

1. Place the machine on a bench of adequate size and sturdiness (4 threaded holes provided under the base allow the machine to be fastened securely in place).
2. Move the safety lever **(2)**.
3. Lift the machine using the grip. In this position, it should not come down. If this is not the case, slightly tighten the screw **(17)** that works directly on the clutch inside the rotation and lifting unit.
4. Make sure that the machine is aligned with the graded scale **(18)** according to the chosen cutting angle.
5. Make sure that the nut **(19)** is tight.

Note: Before plugging the machine in, make sure that the line voltage corresponds to the voltage indicated on the machine.

6. Mount the piece holder **(20)**, tightening it by means of the headless screws **(21)**.
7. Loosen the knob **(22)**.
8. Slide the rod **(23)** to define the desired cutting length.
9. Tighten the knob **(22)** securely.
10. Set the cutting speed using the regulator **(9)**; set the blade advancement based on the material to be cut.

Cutting speed

Material	Speed (m/min)
Stainless steel	20–50
Copper, aluminium, and their alloys	40–60
Steel, etc.	50–70

Insert the piece to be cut in the clamp and tighten the clamp lever securely. Only start working when the working piece cannot move anymore.

Adjusting the blade guide

1. Loosen the lever **(24)**.
2. Slide the blade guide **(25)** which also serves as protection until the saw **(3)** is as much covered as possible, based on the size of the part to be cut.

Operator position

- The placement of the machine in relation to the operator position must allow observing the results of the operation to maintain safety.



- During this stage, make sure that the start button **(8)** and speed regulator **(9)** are easily accessible and that there is sufficient visibility and lighting on the tool, the surrounding area, and the base.

Notes:

- It is strictly forbidden to place and/or use the saw when environmental conditions may cause a fire or an explosion.
- It is forbidden to use the machine for a purpose other than that intended by the manufacturer.
- Make sure that operating the saw does not create dangerous situations for persons and/or property.
- If any malfunction is encountered, the machine must be stopped immediately and the reason and extent of the malfunction be checked. A damaged machine must be repaired before being taken into operation again. Contact the manufacturer or an authorised service partner if necessary.

Starting

Release the safety switch by turning the (orange) lock down **(8)**, then press the button, and begin cutting using even pressure.

Caution: The first time it is started, the machine will be fairly noisy, due to the normal breaking in stage of the transmission gears. This noise will disappear after approximately 8 working hours. In any case, the measurable noise level is equal to and not greater than 85 dB (A).

It is absolutely forbidden

- to lubricate the blade (saw) immediately before/during/after cutting;
- to work without the blade guide installed and positioned properly;
- to work without the rear guard;
- to hold the piece to be cut by hand.

The manufacturer shall not be held liable for damage of any type or nature caused by irrational use of the machine. Failure to observe the safety rules indicated in this manual as well as changes or any modification to the machine (whether they be slight) will invalidate all warranty.

Maintenance*Replacing the saw*

It is essential to wear protective gloves when changing the blade of the tool:

1. Remove the corner plate **(27)** from the mobile blade guide.
2. Remove the protective guard **(28)**.
3. Turn the lever **(29)** towards the position “-”.
4. Remove the blade **(30)**.
5. Insert the new blade taking care to observe the cutting direction and placing it between the blade guide rollers and between the rubber pulleys **(31)**.
6. Turn the lever **(29)** towards the position “+”.
7. When the lever **(29)** reaches the end of its stroke, the blade will automatically position itself for cutting when the motor begins to turn.
8. Replace the guard **(28)** and plate **(27)** of the mobile blade guide.

Note: During the first 4–6 cuts (after replacing the blade), only perform slight cutting pressures to increase the duration and effectiveness of the blade thereafter.

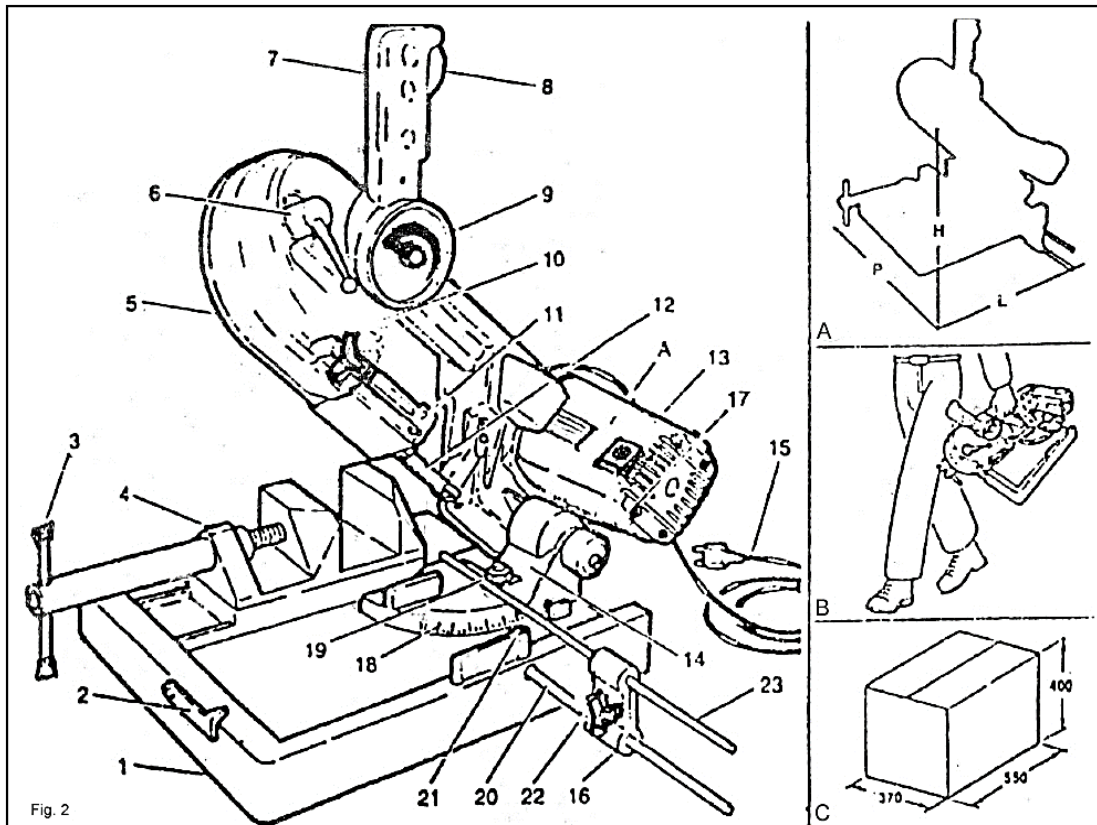
After each working shift

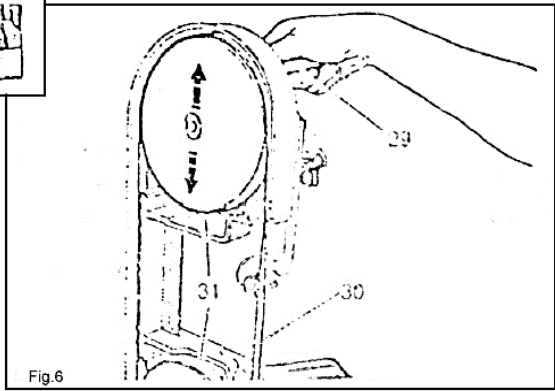
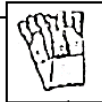
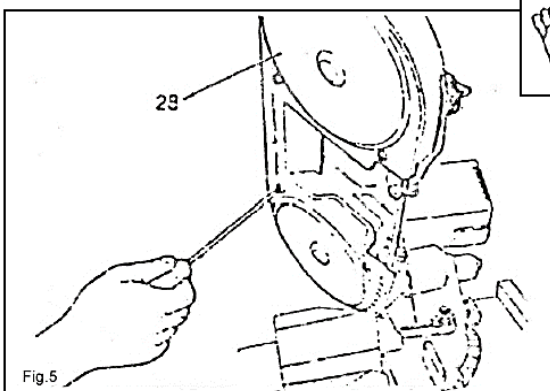
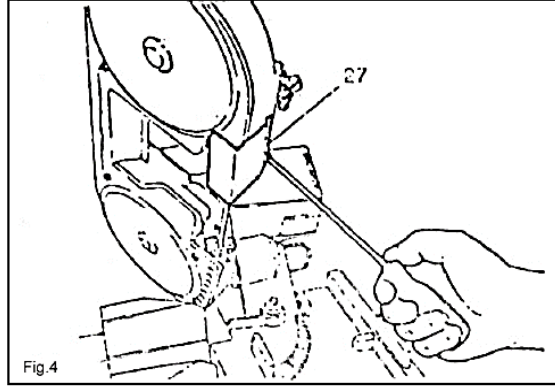
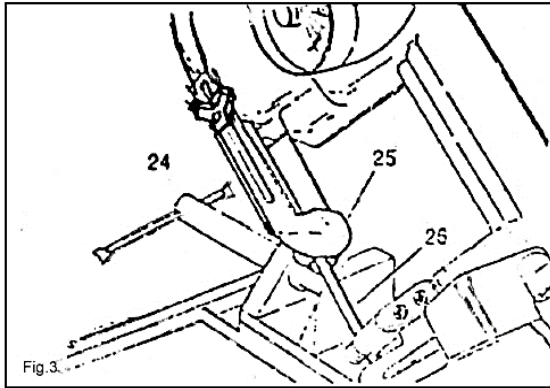
Carefully clean all parts of the machine to remove shavings and cutting residue.

Periodically

- Check the length of the electric motor brushes and make sure they are efficient. If they are less than 6 mm long, they must be replaced with original new ones.
- The gear transmission requires no maintenance since it runs on **long life lubricants**.

Figures and illustrations





Disposal regulations

EU guidelines regarding the disposal of scrap electric appliances (WEEE, 2012/19/EU) were implemented in the law related to electrical and electronic equipment and appliances.

All WiTec electric devices that fall under the WEEE regulations are labelled with the crossed-out wheeled waste bin logo. This logo indicates that this electric equipment must not be disposed with the domestic waste.

The company WiTec Technik GmbH has been registered in the German registry EAR under the WEEE-registration number DE45283704.

Disposal of used electrical and electronic appliances (intended for use in the countries of the European Union and other European countries with a separate collection system for these appliances).

The logo on the article or on its packaging points out that this article must not be treated as normal household waste but must be disposed to a recycling collection point for electronic and electrical waste equipment. By contributing to the correct disposal of this article you protect the environment and the health of your fellow men. Environment and health are threatened by inappropriate disposal.



Material recycling helps reduce the consumption of raw materials.

Additional information on recycling this article can be provided by your local community, municipal waste disposal facilities, or the store where you purchased the article.

Address:
WiTec Wildanger Technik GmbH
Königsbenden 12 / 28
D-52249 Eschweiler

Important notice:

The reprint or reproduction, even of excerpts, and any commercial use, even in part, of this instruction manual require the written permission of WiTec Wildanger Technik GmbH.