

Operation Manual

Compressor 24 ℓ

61957, 61960



Illustration similar, may vary depending on model

Read and follow the operating instructions and safety information before using for the first time.

Technical changes reserved!

Due to further developments, illustrations, functioning steps, and technical data can differ insignificantly.

Updating the documentation

If you have suggestions for improvement or have found any irregularities, please contact us.



The information contained in this document may alter at any time without previous notice. It is prohibited to copy or spread any parts of this document in any way without prior written allowance. All rights reserved.

The WilTec Wildanger Technik GmbH cannot be held accountable for any possible mistakes in this operating manual, nor in the diagrams and figures shown.

Even though, the WilTec Wildanger Technik GmbH has undergone biggest possible efforts to ensure that the operating manual is complete, faultless, and up to date, mistakes cannot be entirely avoided.

If you should find a mistake or wish to make a suggestion for improvement, we look forward to hearing from you.

Send an e-mail to:

service@wiltec.info

or use our contact form:

<https://www.wiltec.de/contacts/>

The most recent version of this manual in various languages can be found in our online shop via:

<https://www.wiltec.de/docsearch>

Our postal address is:

WilTec Wildanger Technik GmbH
Königsbenden 12
52249 Eschweiler
Germany

To return orders for exchange, repair, or other purposes, please use the following address. Attention! To allow for a smooth execution of your complaint or return, it is important to contact our customer service team before returning the goods.

Returns Department
WilTec Wildanger Technik GmbH
Königsbenden 28
52249 Eschweiler

E-mail: **service@wiltec.info**

Tel: +49 2403 55592-0

Fax: +49 2403 55592-15



Introduction

Thank you for purchasing this quality product. **To minimise the risk of injury we urge that our clients take some basic safety precautions when using this device. Please read the operation instructions carefully and make sure you have understood its content.**

Keep these operation instructions safe.

Important information

- **Please read the instruction manual thoroughly and understand it before putting the device into operation. Improper use may result in damage or injury to people. People who are not familiar with the manual may not operate the device.**
- **Keep the instructions for use. Children and adolescents are not permitted to use the device.**
- Most accidents during use of the compressor are due to non-compliance with basic safety regulations. To avoid accidents, all potential sources of danger should be identified in good time and the relevant safety regulations should be complied with.
- Never use the compressor improperly, but only as recommended by the manufacturer, and only if you are sure that there is no danger to the user or people within the vicinity.
- **Note:** Check the device before each use. If damage is found, do not continue to use the device. Repairs must only be carried out by a qualified technician. Never open the device.

Safety instructions

Read all instructions!

- Use lines and air tools suitable for higher or equal pressure to the operating pressure of the compressor.
- Drain the condensation water from the boiler daily or every 4 operating hours. Open the appropriate device and tilt the compressor to drain the accumulated water.
- To avoid danger, the compressed air jet must never be directed at people or animals.
- To avoid combustion, never touch the pipes, engine, or any other hot components of the compressor.
- Do not make any changes to the compressor. Contact a qualified technician for all repairs. Unauthorised modifications may affect the compressor performance or cause serious accidents if performed by people who do not have the necessary technical knowledge.
- Solvents such as petrol, thinner, diesel oil or other substances containing alcohol can damage the plastic parts. These parts should not be cleaned with such substances but with soapy water or suitable liquids.
- If the compressor produces strange noises or strong vibrations during operation or if it is defective, the compressor must be stopped immediately. Contact a qualified technician for troubleshooting.
- Operate the compressor at the voltage indicated on the type label. If the compressor is operated at a voltage higher than the specified nominal voltage, the motor may be subjected to unacceptably high temperatures.
- Always keep the motor ventilation grille clean. Clean the grate at regular intervals if the compressor is used in heavily soiled environments.
- Check regularly that all screws and plates are securely fastened.
- When operating the compressor, follow all instructions in this manual. Prevent the compressor from being used by children or people unfamiliar with its operation.
- The compressor is a machine that produces compressed air. Never use the compressor for work that is not described in the operating manual.
- If a protective device or other components have been damaged, the compressor must be checked before restarting to ensure safe operation. Check the alignment of components in motion, piping, pressure terminals, compressed air connections and any other components that are important for normal operation.



- Always work carefully and remain awake. Do not use the compressor when you are tired. The compressor must not be used if the user is under the influence of alcohol, drugs, or medicines which can cause fatigue.
- When the compressor is used outdoors, only electrical extensions intended and marked for outdoor use may be used.
- Do not unplug the device from the socket by pulling its power cable. Keep the cable away from heat sources, oil, and sharp edges. Do not step on or squeeze the power cord.
- Do not wear loose clothing or jewellery as they may get caught in moving parts. Wear hearing protection if necessary.
- Prevent children or other people from coming into contact with the compressor. Ensure that all unauthorised people maintain a safe distance from the working area.
- Keep the working area clean and remove any unused tools. Ensure good ventilation of the work area. Do not use the compressor in environments containing paint, petrol, chemicals, adhesives or other flammable or explosive substances.
- When the compressor is not in use, it must be stored in a dry place and protected from the weather. It must be stored out of the reach of children.
- Do not transport the compressor if it is still connected to an electrical power source or if the boiler is under pressure. Before connecting the compressor to an energy source, make sure to turn the pressure switch off.
- Before carrying out any repair, inspection, maintenance, cleaning or component replacement work, the compressor must be disconnected from the mains supply and the pressure released from the tank.
- Never use the compressor near water or in a humid environment.
- Always wear protective glasses or eye protection. Never point the compressed air jet at your own body or at other persons.
- Never operate the compressor unless all guards (e.g., guards, belt guards, safety valve) are properly installed. If maintenance or repair work necessitates the removal of the guards, make sure that they have been properly reattached before restarting the compressor.
- Never place your hands, fingers, or any other parts of your body near moving parts.

Work with compressed air and blow guns

- Compressors and lines reach high temperatures during operation. Avoid touching these parts as this can cause burns.
- The air sucked in by the compressor must be kept free of gases, vapours, and mixtures, which can lead to fire or explosion in the unit.
- When releasing the hose coupling, be sure to hold the hose coupling piece to avoid injury from the hose coming out.
- Always wear protective glasses when working with the blow gun. Blown foreign bodies and particles can easily cause injuries.
- Never point the blow gun at persons.
- Never clean clothes on the body with the blow gun.

Working with paint sprayers

- Do not use varnishes or solvents with a flash point of less than 21 °C.
- Never heat solvents or paints.
- When processing liquids that are harmful to the health, filter devices such as face masks are required for protection. Please observe the information on further protective measures provided by the manufacturer of these substances.
- Do not smoke in the entire working area during the spraying process. Paint vapours are highly flammable.
- Paint vapours are harmful to health. Therefore, do not store or consume any food or drinks in the work area.
- Note that the working area must be more than 30 m³. Sufficient air circulation during spraying and drying is absolutely necessary.
- PVC hoses must not be used with liquids such as white spirit, butyl alcohol or ethylene chloride, as this can lead to a reduced service life of the compressed air hose.

- Ensure that the intake air is clean, dry and dust-free.
- Do not place the compressor in a wet or humid room.

Assembly

Take the compressor out of its packaging and check that it is in good condition. The unit must not have suffered any transport damage. Do not operate the unit if it is damaged and contact the manufacturer.

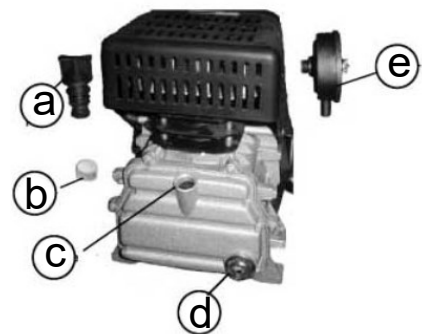
Wheels and air filters

- Mount the two included wheels according to the illustration (exploded view).
- Mount the air filter **(e)**.

Fill in oil

Operation without oil will cause irreparable damage to the unit and void any warranty claims.

- Remove the plastic oil inlet screw **(b)** from the top of the compressor housing crankcase.
- Pour the oil into the crankcase **(c)** until the oil level in the sight glass **(d)** reaches the centre of the red circle.
- Replace the oil inlet screw **(a)** and tighten firmly.



Technical data

Voltage (V)	230
Frequency (Hz)	50
Motor power (W)	1100 (1.5 hp)
Idle speed ($\frac{1}{\text{min}}$)	2850
Suction capacity ($\frac{1}{\text{min}}$)	206
Max. pressure (bar)	8
Tank capacity (ℓ)	24
Weight (kg)	25

Earthing instructions

- This compressor must be grounded during operation to protect the user from electric shock. The single-phase compressor is equipped with a two-wire cable with earthing conductor.
- It is recommended never to disassemble the compressor or make other connections to the pressure switch. All repairs may only be carried out by a qualified technician. It must never be forgotten that the earth conductor is "yellow/green."

Extension

- Only use extension cords with plugs and ground terminals, never use a damaged or crushed extension cord. Before using them, make sure that the extension is in perfect condition. When using an extension cord, also ensure that the cross-section is sufficient for the power consumption of the connected product. A thin extension may result in a drop in voltage, loss of power and excessive heat generation.

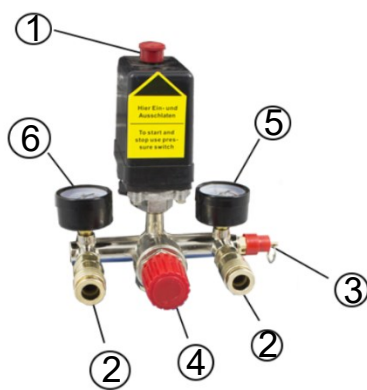
- The single-phase compressor extension cable should have a cross-section appropriate to the length of the cable.

Notes:

- All hazards due to electrical discharges must be avoided. Never use the compressor if the power cord or extension is damaged. The cables must be checked at regular intervals. Never use the compressor in or near water or in the vicinity of hazardous environments that may cause electrical discharges.
- Avoid low temperatures below 0 °C as this may prevent the engine from starting due to inertia.

Operation

- Place the compressor close to the consumer to avoid long air and supply lines.
- Make sure that the oil level is correct and that the air filter has been installed.



No	Name
1	Pressure switch
2	Quick coupling
3	Safety valve
4	Pressure reducer
5	Pressure gauge (boiler pressure)
6	Pressure gauge (adjusted pressure)

Pressure switch

- Set the button (1) in the upper part of the pressure switch mounted on the unit to “off.” Insert the plug into the socket and press the button (1) to “on.” The rubber or spiral hose must be attached to the connector (2) next to the pressure switch.
- **Attention:** Make sure that compressed air lines are suitable for the maximum operating pressure of the compressor. Never attempt to repair damaged/broken lines.
- The operation of the compressor is fully automatic and controlled by the pressure switch. The pressure switch stops the compressor when the maximum pressure in the tank is reached and restarts it when the minimum pressure is reached. Normally the pressure difference between the maximum and minimum value is approx. 2 bar.
- **Example:** The compressor stops when reaching 8 bar (maximum operating pressure) and starts automatically when the pressure inside the tank has dropped to 6 bar. Check the correct function of the pressure switch after connecting the compressor to the power line by means of a charging procedure.

Adjusting the working pressure

It is not always necessary to work at maximum pressure. In most cases, the pneumatic tool used requires less pressure. For compressors equipped with pressure reducers, a correct adjustment of the working pressure is required. This sets the desired pressure: Turn clockwise (+) to increase the pressure and counter-clockwise (-) to decrease it.





Maintenance

Before carrying out any maintenance work on the compressor, make sure that

- the main switch is set to “off,”
- the pressure switch or the power button is set to “off,”
- the air reservoir is completely pressure-less.

Condensed water

Remove the condensation water from the compressed air tank daily. To do this, release the pressure from the compressed air tank, open the drainage valve on the underside of the compressed air tank and drain the condensation water.

Safety valve

The safety valve factory settings is the maximum permissible pressure of the compressed air tank. It is not permitted to remove the seal or adjust the safety valve.

Cleaning the suction filter

The suction filter prevents dirt and dust from being sucked in. A dirty suction filter considerably reduces the performance of your compressor. It is therefore necessary to clean the filter every 300 operating hours. Hold the suction filter with your entire hand and carefully pull it out of its holder. Remove the internal filter and wash it out with petrol. Allow the filter to dry completely before insertion. Place the filter back in the housing and apply light pressure.

Attention: Risk of burns! Please wait until the compressor has cooled down completely.

Oil

- Empty the oil in the crankcase after the first ten hours of operation and top up with clean oil. Remove the oil plug from the crankcase (bottom left of crankcase).
- **Caution:** SAE 30 or L-DAB 100 above 10 °C and SAE 10 or L-DAB 68 below 10 °C
- Drain the oil every 500 operating hours and refill the crankcase with clean oil.

Disturbances

The following causes can lead to an overload of the compressor and thus to the response of the overload protection:

- Insufficient air supply
- Leaking check valve
- Defective compressor valves
- Heavy conrod bearing
- Mains voltage too high

Problem: Air loss at the valve under the pressure switch

This defect is due to insufficient sealing of the non-return valve or its piping: Check all connections with soapy water to detect any leaks.



Problem: The compressor is running, but does not charge.

The malfunction may be caused by a defect in the valves and seals. Check for defects and replace damaged parts.

Problem: The compressor does not start.

If the compressor has problems starting, make sure that

- the mains voltage corresponds to the one indicated on the type label,
- no extension cables are used which are unsuitable in terms of cross-section or length,
- the working range is not too cold (below 0 °C),
- the power supply is correct (plug correctly connected, magneto-thermic switches and fuses intact).

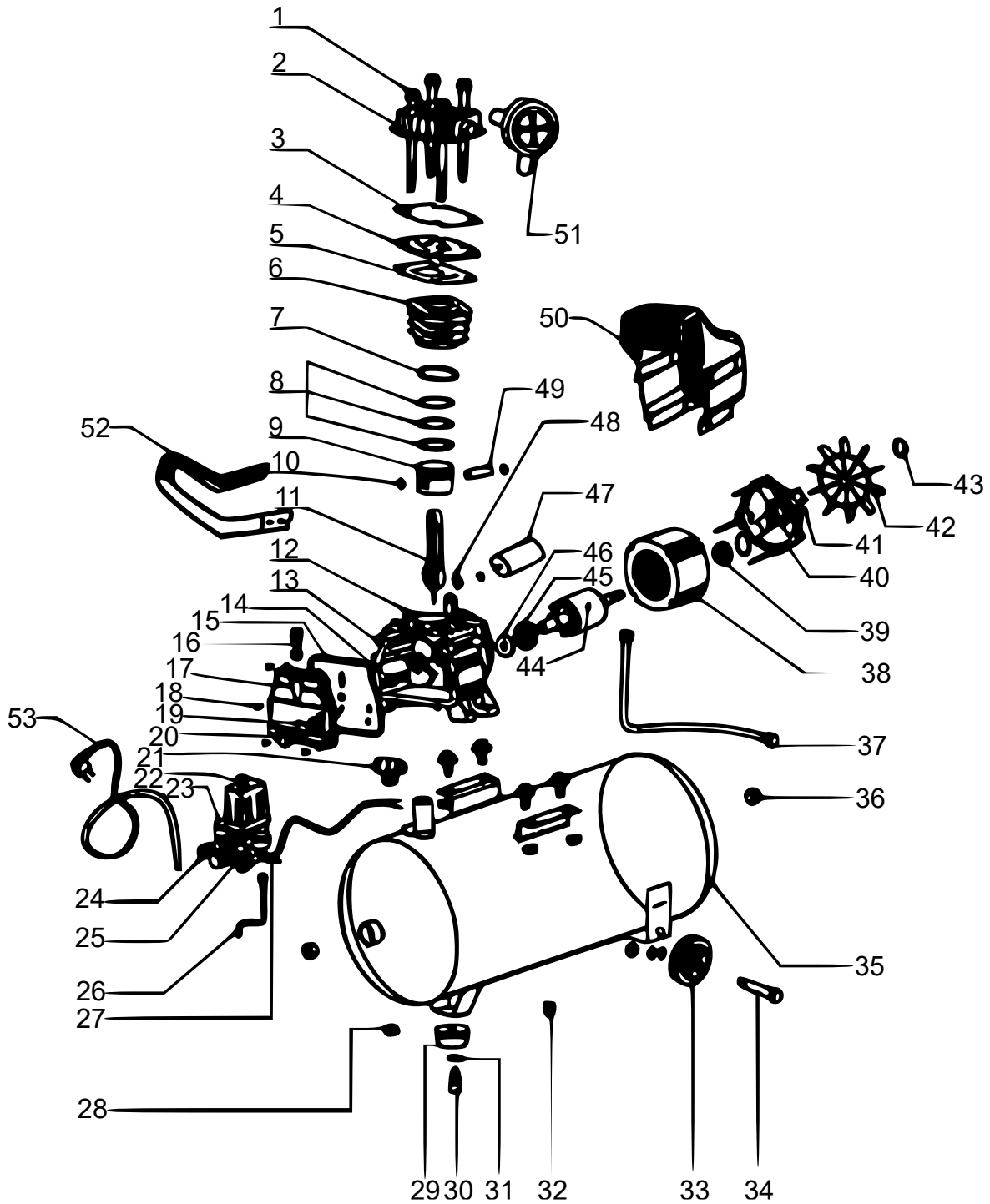
Problem: The compressor does not stop.

If the compressor does not stop when the maximum pressure is reached, the safety valve of the tank is triggered. In this case an authorised technician must be contacted.

Warnings

- Avoid unscrewing any connection parts without first relieving the pressure in the device and tank as well as the pipes.
- It is forbidden to drill holes or weld or intentionally deform the compressed air tank.
- Always unplug the compressor before carrying out any work on the compressor!
- The ambient temperature for proper operation must be between 0 °C and +25 °C.
- Do not spray the compressor with water jets or flammable liquids.
- Do not place any flammable objects near the compressor.
- Set the push button and power button to "off" when pauses are made or the unit is not in use.
- Never aim the air jet at people or animals.
- Never transport the compressor as long as there is pressure in the tank.
- Be aware that some parts of the compressor (head, pressure hoses) can become very hot. Do not touch these parts as there is a risk of burns.
- When transporting the device, make sure to only use the handles provided for lifting and pulling the device.
- Children and animals must be kept away from the operating area of the machine.
- If the power cable or plug is damaged, do not use the device! Contact an authorised technician.
- If the compressor is placed on a shelf or higher than the floor, it must be secured against falling during operation by means of a suitable fastening.
- Do not push any objects into the protective grilles and do not reach in with your hands as this may cause injury to the user or damage to the device.
- Always disconnect the mains plug after using the compressor.

Exploded view





Parts list

№	Name	Qty.	№	Name	Qty.
1	Screw	4	28	Screw	6
2	Cylinder head	1	29	Pedestal	1
3	Cylinder head gasket	1	30	Screw	1
4	Valve flap	1	31	Washer	1
5	Valve cover gasket	1	32	Drain valve	1
6	Cylinder	1	33	Wheel	2
7	Cylinder gasket	1	34	Bolt screw	2
8	Piston ring	3	35	Tank	1
9	Piston	1	36	Screwing	2
10	Protective ring	2	37	Drain pipe	1
11	Piston rod	1	38	Coil	1
12	Screw	1	39	Bearing	1
13	Crankshaft	1	40	Engine cover	1
14	Crankcase	1	41	Screw	1
15	Rubber gasket	1	42	Engine cover	1
16	Oil plug	1	43	Protective ring	1
17	Oil cover	1	44	Rotor	1
18	Screw	1	45	Bearing	1
19	Oil level indicator seal	1	46	Protective ring	1
20	Oil level indicator	2	47	Capacitor	1
21	Distributor	1	48	Nut	1
22	Pressure gauge for boiler pressure	1	49	Piston bolt	1
23	Pressure gauge for regulated pressure	1	50	Cover	1
24	Drain valve	1	51	Air filter	1
25	Safety valve	1	52	Handle	1
26	Tube	1	53	Power cord	1
27	Pressure regulator	1			

Disposal regulations

EU guidelines regarding the disposal of scrap electric appliances (WEEE, 2012/19/EU) were implemented in the law related to electrical and electronic equipment and appliances.

All WiTec electric devices that fall under the WEEE regulations are labelled with the crossed-out wheeled waste bin logo. This logo indicates that this electric equipment must not be disposed with the domestic waste.

The company WiTec Technik GmbH has been registered in the German registry EAR under the WEEE-registration number DE45283704.

Disposal of used electrical and electronic appliances (intended for use in the countries of the European Union and other European countries with a separate collection system for these appliances).

The logo on the article or on its packaging points out that this article must not be treated as normal household waste but must be disposed to a recycling collection point for electronic and electrical waste equipment. By contributing to the correct disposal of this article you protect the environment and the health of your fellow men. Environment and health are threatened by inappropriate disposal.



Material recycling helps reduce the consumption of raw materials.

Additional information on recycling this article can be provided by your local community, municipal waste disposal facilities, or the store where you purchased the article.

Address:
WiTec Wildanger Technik GmbH
Königsbenden 12 / 28
D-52249 Eschweiler

Important notice:

The reprint or reproduction, even of excerpts, and any commercial use, even in part, of this instruction manual require the written permission of WiTec Wildanger Technik GmbH.