

Operation Manual

50 ℓ Air Compressor

61958, 61961

XPO ^{the} **tool**
experts



Illustration similar, may vary depending on model

Read and follow the operating instructions and safety information before using for the first time.

Technical changes reserved!

Due to further developments, illustrations, functioning steps, and technical data can differ insignificantly.

Updating the documentation

If you have suggestions for improvement or have found any irregularities, please contact us.



The information contained in this document may alter at any time without previous notice. It is prohibited to copy or spread any parts of this document in any way without prior written allowance. All rights reserved.

The WilTec Wildanger Technik GmbH cannot be held accountable for any possible mistakes in this operating manual, nor in the diagrams and figures shown.

Even though, the WilTec Wildanger Technik GmbH has undergone biggest possible efforts to ensure that the operating manual is complete, faultless, and up to date, mistakes cannot be entirely avoided.

If you should find a mistake or wish to make a suggestion for improvement, we look forward to hearing from you.

Send an e-mail to:

service@wiltec.info

or use our contact form:

<https://www.wiltec.de/contacts/>

The most recent version of this manual in various languages can be found in our online shop via:

<https://www.wiltec.de/docsearch>

Our postal address is:

WilTec Wildanger Technik GmbH
Königsbenden 12
52249 Eschweiler
Germany

To return orders for exchange, repair, or other purposes, please use the following address. Attention! To allow for a smooth execution of your complaint or return, it is important to contact our customer service team before returning the goods.

Returns Department
WilTec Wildanger Technik GmbH
Königsbenden 28
52249 Eschweiler

E-mail: **service@wiltec.info**

Tel: +49 2403 55592-0

Fax: +49 2403 55592-15



Introduction

Thank you for purchasing this quality product. **To minimise the risk of injury we urge that our clients take some basic safety precautions when using this device. Please read the operation instructions carefully and make sure you have understood its content.**

Keep these operation instructions safe.

Important information

Caution:

- **Read the instruction manual carefully before putting the device into operation. Improper use may result in damage to persons and property. Persons who are not familiar with the manual must not operate the device.**
- **Keep the instructions for use. Children and adolescents are not permitted to use the device.**
- Most accidents during use of the compressor are due to non-compliance with basic safety regulations. To avoid accidents, all potential sources of danger should be identified in good time and the relevant safety regulations should be observed.
- Never use the compressor improperly, but only as recommended by the manufacturer, and only if you are sure that there is no danger to the user or persons in the vicinity.
- **Note:** Check the device before each use. If a damage is found, do not continue to use the device. Repairs must only be carried out by the manufacturer or an authorized service partner. Never open the device yourself.

Safety precautions

Read all instructions attentively and carefully!

- Use lines and air tools suitable for the pressure higher than or equal to the operating pressure of the compressor.
- Drain the condensation water from the boiler daily or every 4 operating hours. Open the appropriate device and tilt the compressor to drain the accumulated water.
- To avoid danger, the compressed air jet must never be directed at persons or animals.
- To avoid combustion, never touch the pipes, engine, or any other hot components of the compressor.
- Do not make any changes to the compressor. Contact the manufacturer or an authorized service partner for all repairs. Unauthorized modifications may affect compressor performance or cause serious accidents if performed by personnel who do not have the necessary technical knowledge.
- Solvents such as petrol, thinner, diesel oil or other substances containing alcohol can damage the plastic parts. These parts should not be cleaned with such substances, but with soapy water or suitable liquids.
- If the compressor produces strange noises or strong vibrations during operation, or if it is defective, the compressor must be stopped immediately. Contact the manufacturer or an authorized service partner for troubleshooting.
- Operate the compressor at the voltage indicated on the data plate. If the compressor is operated at a voltage higher than the specified nominal voltage, the motor may be subjected to unacceptably high temperatures.
- Always keep the motor ventilation grille clean. Clean the grate at regular intervals if the compressor is used in heavily soiled environments.
- Check regularly that all screws and plates are securely fastened.
- When operating the compressor, follow all instructions in this manual. Prevent the compressor from being used by children or persons unfamiliar with its operation.
- The compressor is a machine that produces compressed air. Never use the compressor for work that is not described in the operating manual.



- If a protective device or other components have been damaged, the compressor must be checked before restarting to ensure safe operation. Check the alignment of components in motion, piping, pressure terminals, compressed air connections and any other components that are important for normal operation.
- Always work carefully and remain awake. Do not use the compressor when you are tired. The compressor must not be used if the user is under the influence of alcohol, drugs, or medicine which might cause fatigue.
- When the compressor is used outdoors, only electrical extensions intended and marked for outdoor use may be used.
- Do not unplug the power cord from the wall outlet. Keep the cable away from heat sources, oil, and sharp edges. Do not step on or squeeze the power cord.
- Do not wear wide garments or jewellery as they may get caught in moving parts. Wear hearing protection if necessary.
- Prevent children or other persons from coming into contact with the compressor power cord. Ensure that all unauthorised persons maintain a safe distance from the working area.
- Keep the working area clean and remove any unused tools. Ensure good ventilation of the work area. Do not use the compressor in environments containing paint, petrol, chemicals, adhesives or other flammable or explosive substances.
- When the compressor is not in use, it must be stored in a dry place and protected from the weather. It must be stored out of the reach of children.
- Do not transport the compressor if it is still connected to an electrical power source or if the boiler is under pressure. Before connecting the compressor to an energy source, make sure that the switch of the pressure switch is in the OFF position.
- Before carrying out any repair, inspection, maintenance, cleaning or component replacement work, the compressor must be disconnected from the mains supply and the pressure released from the boiler.
- Never use the compressor near water or in a humid environment.
- Always wear protective glasses or eye protection. Never point the compressed air jet at your own body or at other persons.
- Never operate the compressor unless all guards (e.g., guards, belt guards, safety valve) are properly installed. If maintenance or repair work necessitates the removal of the guards, make sure that they have been properly reattached before restarting the compressor.
- Never place your hands, fingers, or any other parts of your body near moving parts.

Working with compressed air and blow guns

- Compressors and lines reach high temperatures during operation. Avoid touching these parts as this can cause burns.
- The air sucked in by the compressor must be kept free of gases, vapours, and admixtures, which can lead to fire or explosion in the unit.
- When releasing the hose coupling, be sure to hold the hose coupling piece by hand to avoid injury from the hose coming out.
- Always wear protective goggles when working with the blow gun. Blown foreign bodies and particles can easily cause injuries.
- Never point the blow gun at persons.
- Never clean clothes on the body with the blow gun.

Working with paint sprayers

- Do not use varnishes or solvents with a flash point of less than 21 °C.
- Never heat solvents or paints.
- When processing liquids that are harmful to health, filter devices such as view masks are required for protection. Please observe the information on further protective measures provided by the manufacturer of these substances.
- Do not smoke in the entire working area during the spraying process. Paint vapours are highly flammable.

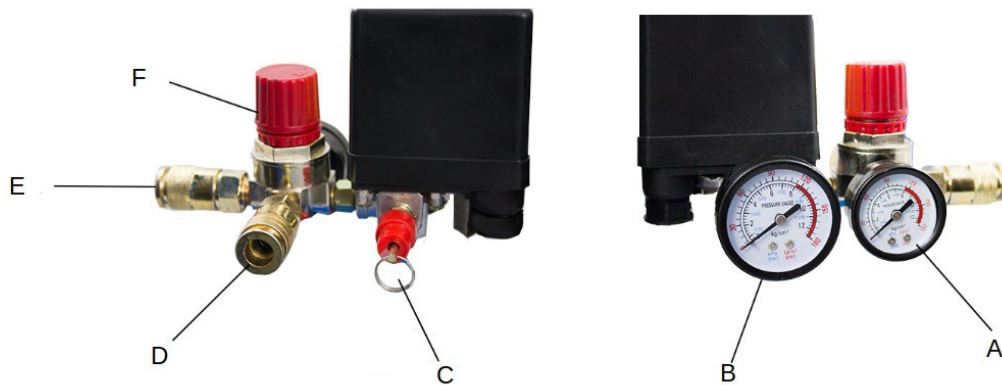


-
- Paint vapours are harmful to health. Therefore, do not store or consume any food or drinks in the work area.
 - Note that the working area must be more than 30 m³. Sufficient air circulation during spraying and drying is absolutely necessary.
 - PVC hoses must not be used with liquids such as white spirit, butyl alcohol or ethylene chloride, as this can lead to a reduced service life of the compressed air hose.
 - Ensure that the intake air is clean, dry and dust-free.
 - Do not place the compressor in a wet or humid room.

Description

This compressor impresses with its new design and excellent operation. It has a very compact construction, good appearance, low weight, easy handling, good safety, and low noise level. It can be used for machines, air-brushes and other devices.

Main components



Nº	Name	Nº	Name
1	Compressor	10	Air tank
2	Pressure switch	11	Safety valve
3	Drain valve	12	Cover
4	Pressure regulator	A	Discharge pressure
5	Pressure gauge	B	Tank pressure
6	Check valve	C	Safety valve
7	Drain cock	D	Discharge valve 2
8	Wheel	E	Discharge valve 1
9	Discharge tube	F	Pressure regulator



Technical data

Intake voltage (V)	230
Frequency (Hz)	50
Compressor power (W)	1100 (1.5 hp)
Max. rotation speed (1/min)	2850
Suction capacity (1/min)	206
Tank capacity (l)	50
Noise level (dB (A))	83
Max. operating pressure (bar)	8
Test pressure (bar)	12.6
Temperature range (°C)	5–150
Weight (kg)	30
Connections	NW7.2
Equipment	<ul style="list-style-type: none"> • Thermal motor protection • 2 compressed air connections • 2 pressure gauges • 1 pressure reducer • Oil lubricated • Pressure relief valve

Before commissioning

- Place the compressor in a clean, dry, and well-ventilated place.
- Use only 230 V operating voltage with a maximum fluctuation of 5 %.
- At the oil level, check whether it is within the red display circuit.
- Use SAE30 gear oil when the ambient temperature is above 10 °C. If the ambient temperature is below 10 °C, use SAE10 gear oil.
- Open the drain valve, adjust the pressure, and let the compressor run for 10 min without any equipment connected so that all moving parts lubricate themselves.

Settings

- The compressor is secured by a pressure switch. As soon as the max. boiler pressure is reached, it switches off automatically. As soon as the pressure has fallen below the minimum rate, it switches on again. This pressure setting was made ex-factory and must not be changed. As soon as the engine switches off, the compressed air in the discharge pipe should be released by the release valve under the switch. This works automatically and is necessary to avoid damaging the engine. The pressure can be varied by turning the screw bolt.
- The discharge pressure can be adjusted by the pressure regulator.
- When you turn off the compressor, turn it off with the on/off switch.



Specific safety instructions

- First remove the gear oil cover and insert the red plug.
- Never unscrew a connection when the tank is under pressure.
- Never disconnect an electrical connection when voltage is applied to the mains plug.
- Never change the settings of the safety relief valve.
- Make sure that the mains voltage does not deviate from 230 V by more than 5 %.
- Do not pull the mains plug to stop the compressor. Always use the on/Off switch on the compressor.
- If the release valve does not work when the engine stops, try to correct the fault before operating the compressor and damaging the engine.
- The oil must always be clean and you must make sure that the oil level is correct.
- Always disconnect the mains plug when unscrewing a valve.

Maintenance

- The first oil change should take place after the first 10 hours.
- Afterwards, an oil change every 20 working hours is sufficient.
- Every 60 working hours, open the drain cock to let condensation water out of the tank.
- Clean the air filter every 120 working hours.

Warnings

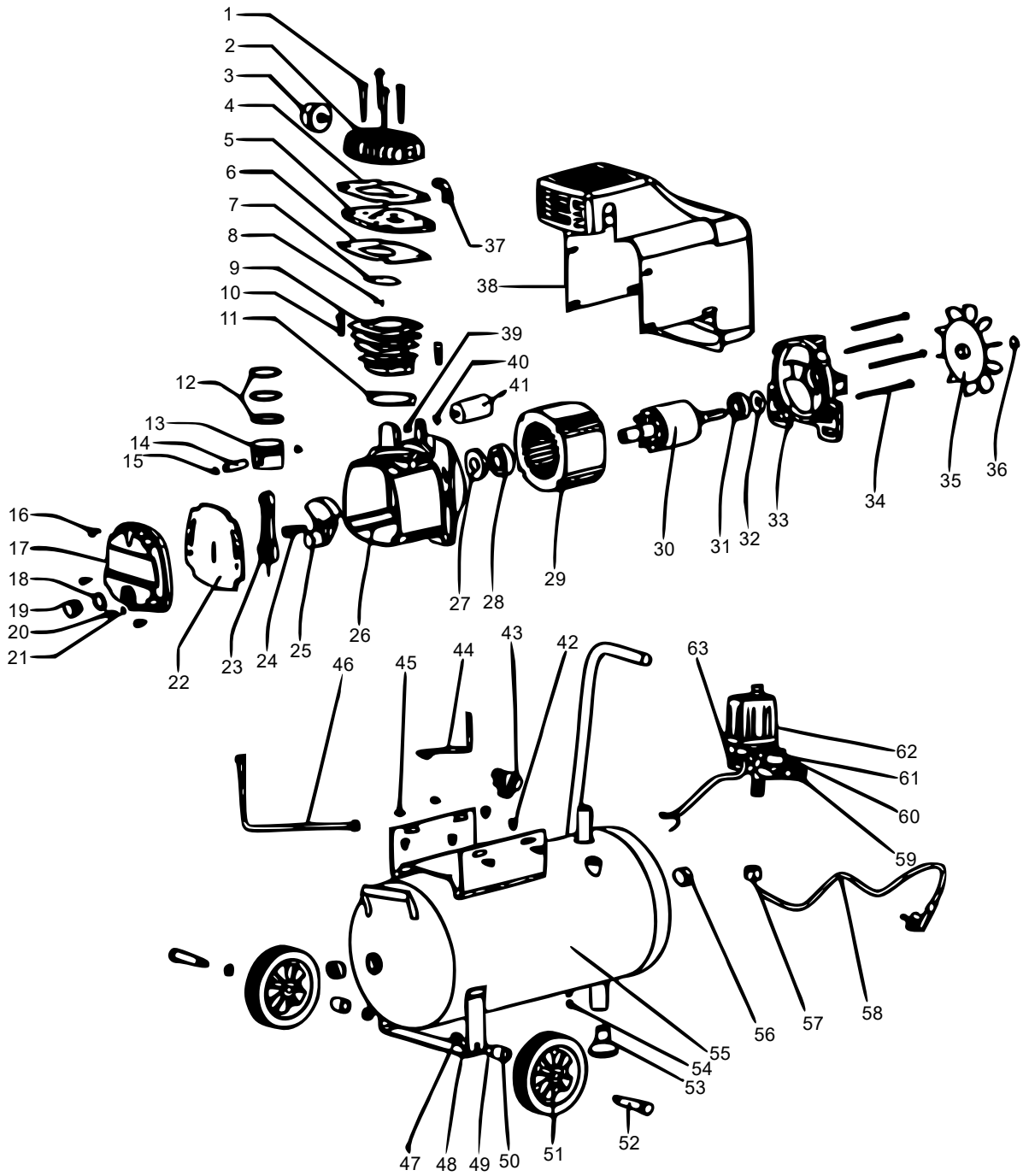
- Avoid absolutely unscrewing any connection parts without first relieving the pressure in the device and tank as well as the pipes.
- It is forbidden to drill holes or weld or intentionally deform the compressed air tank.
- Always unplug the compressor before carrying out any work on the compressor!
- The ambient temperature for proper operation must be between 0 °C and +25 °C.
- Do not spray the compressor with water jets or flammable liquids.
- Do not place any flammable objects near the compressor.
- Set the push button and power button to "OFF" when pauses are made or the unit is not in use.
- Never aim the air jet at people or animals.
- Never transport the compressor as long as there is pressure in the tank.
- Make sure that some parts of the compressor (head, pressure hoses) can become very hot. Do not touch these parts as there is a risk of burns!
- When transporting the device, make sure that you only use the handles and handles provided for lifting and pulling the device.
- Children and animals must be kept away from the operating area of the machine.
- If the power cable or plug is damaged, do not use the compressor. Contact the manufacturer or an authorized service partner.
- If the compressor is placed on a shelf or higher than the floor, it must be secured against falling during operation by means of a suitable fastening.
- Do not push any objects into the protective grilles and do not reach in with your hands as this may cause injury to the user or damage to the device.
- Always disconnect the mains plug after using the compressor!



Troubleshooting

Problem	Possible cause	Solution
Motor does not run, runs too slowly, or becomes hot	Incorrect mains voltage	Check cable.
	Mains cable too long/thin	Change cable.
	Error in pressure switch	Repair or change.
	Engine fault	Repair or change.
	Compressor difficult to move	Check and repair.
Sluggishness of the compressor	Moving parts burnt in or destroyed	Check crankshaft, pistons and piston rings, replace if necessary.
Unusual noises or unbalance	Connecting parts loose	Check and tighten.
	Foreign parts get into the compressor	Check and remove.
	Piston hits the valve	Replace cylinder gasket.
	Moving parts worn out	Replace cylinder gasket.
Pressure too low or unloading capacity low	Motor runs too slowly	Check and repair.
	Air filter dirty	Clean or replace.
	Safety valve leaking	Check or change.
	Drain valve leaking	Check or repair.
	Gasket damaged	Check and change.
	Valve blocked	Remove and clean.
	Worn piston ring/cylinder	Repair or exchange.
Oil consumption too high	Oil level too high	Make sure the oil level is correct.
	Air pipe blocked	Check and clean.
	Worn piston ring/cylinder	Repair or exchange.

Exploded view





Parts list

№	Name	Qty.	№	Name	Qty.
1	Screw M6×55	4	33	Engine cover	1
2	Cylinder head	1	34	Screw M5×103	4
3	Air filter	1	35	Engine cover	1
4	Cylinder head gasket	1	36	Clip	1
5	Valve cover	1	37	Connector	1
6	Alumina gasket	1	38	Cover	1
7	Valve cover gasket	1	39	Nut M8	1
8	Valve flap	2	40	Washer (8 mm)	1
9	Cylinder	1	41	Capacitor	1
10	Allen screw M8×25	2	42	Rubber washer	4
11	Cylinder gasket	1	43	Distributor	1
12	Piston ring	1	44	Tube	1
13	Piston	1	45	Screw M5×14	6
14	Piston pin	1	46	Drain pipe	1
15	Clip	2	47	Nut M10	2
16	Screw M5×16	4	48	Washer (8 mm)	2
17	Oil cover	1	49	Washer (10 mm)	2
18	Oil level indicator seal	1	50	Sleeve (10 mm)	2
19	Oil level indicator	1	51	Wheel	2
20	Screw M6×10	1	52	Bolt screw (10 mm)	2
21	O-clip 5.6×1.8	1	53	Pedestal	1
22	Rubber gasket	1	54	Drain valve	1
23	Piston rod	1	55	Tank	1
24	Allen screw M8×22 (left)	1	56	Screwing Rp ½	2
25	Crankshaft	1	57	Nut Rp ¼	1
26	Crankcase	1	58	Pressure regulator	1
27	Protective ring	1	59	Outlet valve	2
28	Bearing 6204	1	60	Pressure gauge for regulated pressure	1
29	Coil	1	61	Safety valve	2
30	Rotor	1	62	Pressure gauge for boiler pressure	1
31	Bearing 6202	1	63	Outlet valve	1
32	Waved washer	1			

Disposal regulations

EU guidelines regarding the disposal of scrap electric appliances (WEEE, 2012/19/EU) were implemented in the law related to electrical and electronic equipment and appliances.

All WiTec electric devices that fall under the WEEE regulations are labelled with the crossed-out wheeled waste bin logo. This logo indicates that this electric equipment must not be disposed with the domestic waste.

The company WiTec Technik GmbH has been registered in the German registry EAR under the WEEE-registration number DE45283704.

Disposal of used electrical and electronic appliances (intended for use in the countries of the European Union and other European countries with a separate collection system for these appliances).

The logo on the article or on its packaging points out that this article must not be treated as normal household waste but must be disposed to a recycling collection point for electronic and electrical waste equipment. By contributing to the correct disposal of this article you protect the environment and the health of your fellow men. Environment and health are threatened by inappropriate disposal.



Material recycling helps reduce the consumption of raw materials.

Additional information on recycling this article can be provided by your local community, municipal waste disposal facilities, or the store where you purchased the article.

Address:
WiTec Wildanger Technik GmbH
Königsbenden 12 / 28
D-52249 Eschweiler

Important notice:

The reprint or reproduction, even of excerpts, and any commercial use, even in part, of this instruction manual require the written permission of WiTec Wildanger Technik GmbH.