

Operation Manual

Swimming Pool Reel System

61979



Illustration similar, may vary depending on model

Read and follow the operating instructions and safety information before using for the first time.

Technical changes reserved!

Due to further developments, illustrations, functioning steps, and technical data can differ insignificantly.

Updating the documentation

If you have suggestions for improvement or have found any irregularities, please contact us.



The information contained in this document may alter at any time without previous notice. It is prohibited to copy or spread any parts of this document in any way without prior written allowance. All rights reserved.

The WilTec Wildanger Technik GmbH cannot be held accountable for any possible mistakes in this operating manual, nor in the diagrams and figures shown.

Even though, the WilTec Wildanger Technik GmbH has undergone biggest possible efforts to ensure that the operating manual is complete, faultless, and up to date, mistakes cannot be entirely avoided.

If you should find a mistake or wish to make a suggestion for improvement, we look forward to hearing from you.

Send an e-mail to:

service@wiltec.info

or use our contact form:

<https://www.wiltec.de/contacts/>

The most recent version of this manual in various languages can be found in our online shop via:

<https://www.wiltec.de/docsearch>

Our postal address is:

WilTec Wildanger Technik GmbH
Königsbenden 12
52249 Eschweiler
Germany

To return orders for exchange, repair, or other purposes, please use the following address. Attention! To allow for a smooth execution of your complaint or return, it is important to contact our customer service team before returning the goods.

Returns Department
WilTec Wildanger Technik GmbH
Königsbenden 28
52249 Eschweiler

E-mail: **service@wiltec.info**

Tel: +49 2403 55592-0

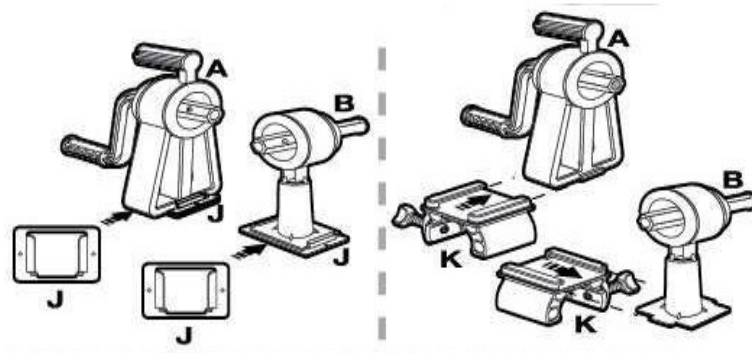
Fax: +49 2403 55592-15

Introduction

Thank you for purchasing this quality product. **To minimise the risk of injury we urge that our clients take some basic safety precautions when using this device. Please read the operation instructions carefully and make sure you have understood its content.** Keep these operation instructions safe.

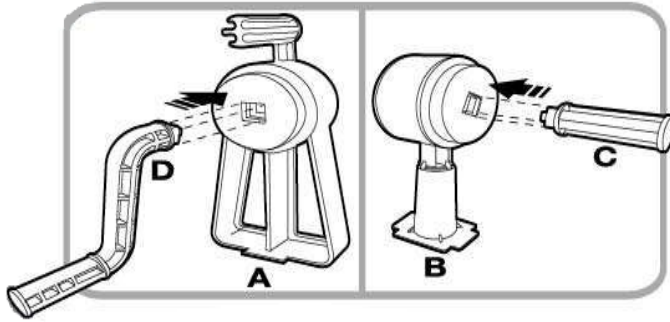


Letter	Name
A	Reel seat
B	Reel seat
C	Handle
D	Crank handle
E	Velcro top
F	Velcro bottom
G	Buckle
H	Clamps
J	Base plate for pool side
K	Clamp for pool edge
L	Tapping screw (long)
M	Tapping screw (short)
N	Screw and nut
O	Cylinder screw
P	Small hexagonal tube
Q	Small hexagonal tube
R	Big hexagonal tube
T	Adapter for hexagonal tube
U	Tapping screw (short)
-	Pool cover (not included)



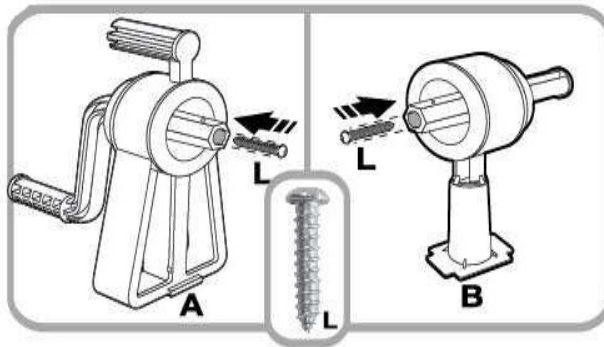
Assembly

1st step



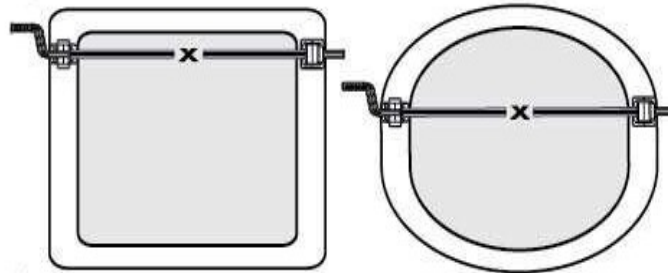
1. Place **D** into **A**.
2. Place **C** into **B**.

2nd step



Place screw **L** into **A** and **B** and tighten them.

Hint: Use a screwdriver with a magnetic head. It will hold the screws in place whilst **D** and **A** are being tightened.

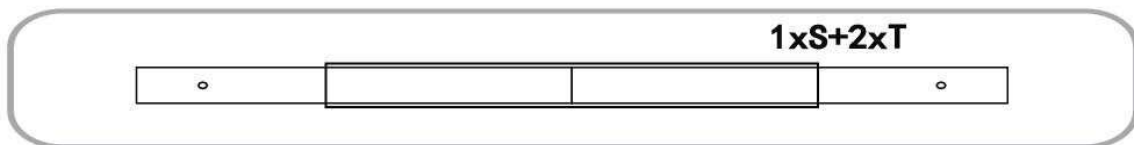
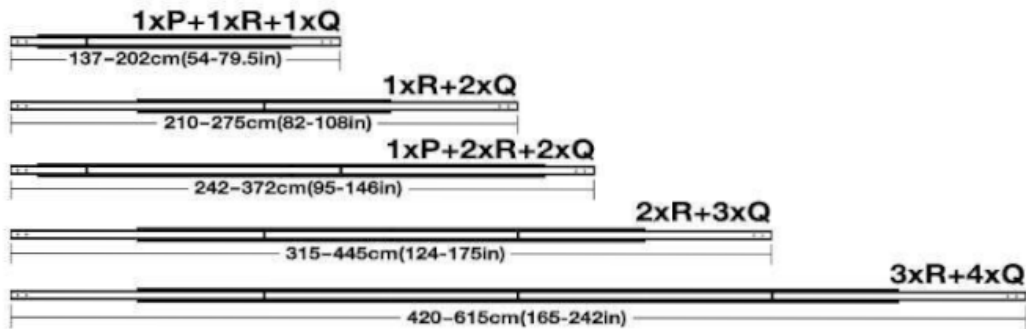


3rd step

1. The required length of the tube set is the length **X**, which describes the surface needing to be covered between the reel seats. The surface reaches from the plug system of **A** to the plug system of **B**, after placing the reel seats on each side of the pool.
2. To measure the length **X** for pools with an outer skirting, place both the base plates **J** on the skirting of the pool (without attaching these permanently). Then position **A** and **B** on **J** and measure the distance in between as previously mentioned.
3. For pools with a framework place **K** on the opposite sides of the frames, Place **A** and **B** on top of **K** and secure one of the sides permanently. Then position the other side on top of **K**, to measure the distance as previously mentioned.

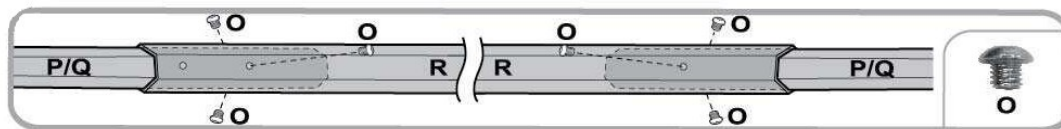
4th step – tubes arrangement

Caution: 20 cm minimum overlap for each tube!

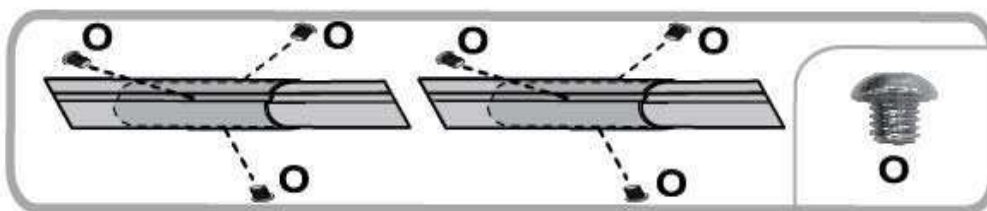


Note: The holes of the tubes **P** and **Q** should be facing towards the ends of both sides of the tube system, so that the sides with the holes can be pushed onto the plug system of **A** and **B**.

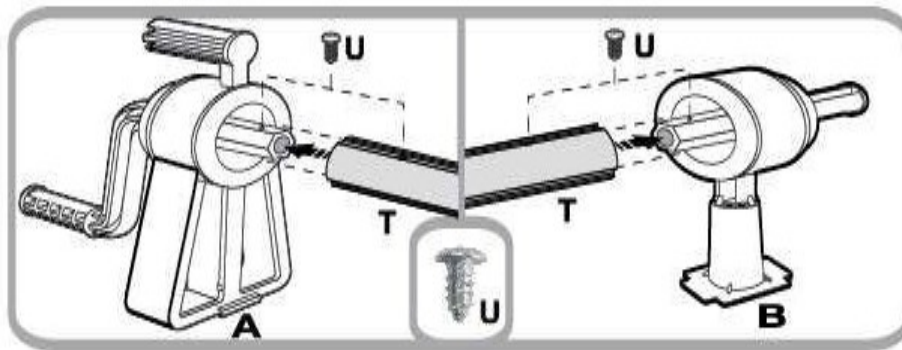
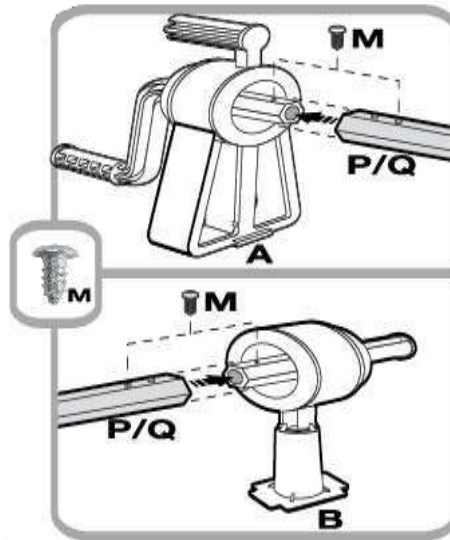
5th step



To connect the connections between **R** and **P/Q**, fasten three screws of **O** into the pre-drilled holes of **R** as shown. A minimum overlap of 20 cm is required.



6th step

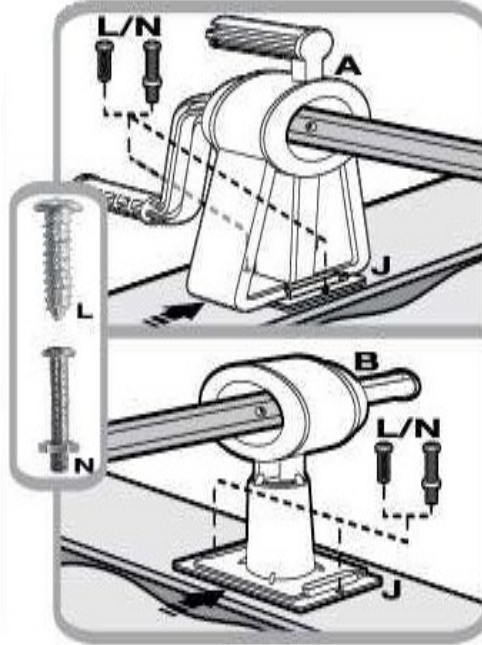


Ensure that the two pre-drilled holes on the tubes of **P/Q** and the hole on the axis are facing each other parallelly. The tube then is connected via screw **M** to the axis of the plug system.

Note: The pre-drilled holes on the tubes of **P/Q** should be readily assembled and positioned onto the plug system of the reel seats of **A** and **B**. Then push the tubes onto the plug system of the reel seats of **A** and **B**.

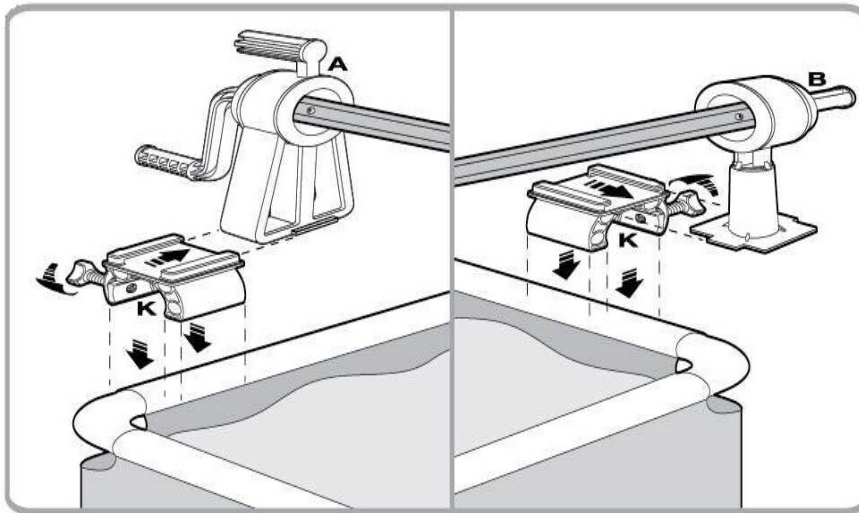
7th step – instruction for different pool types

a) For above-ground pools with an outer skirting

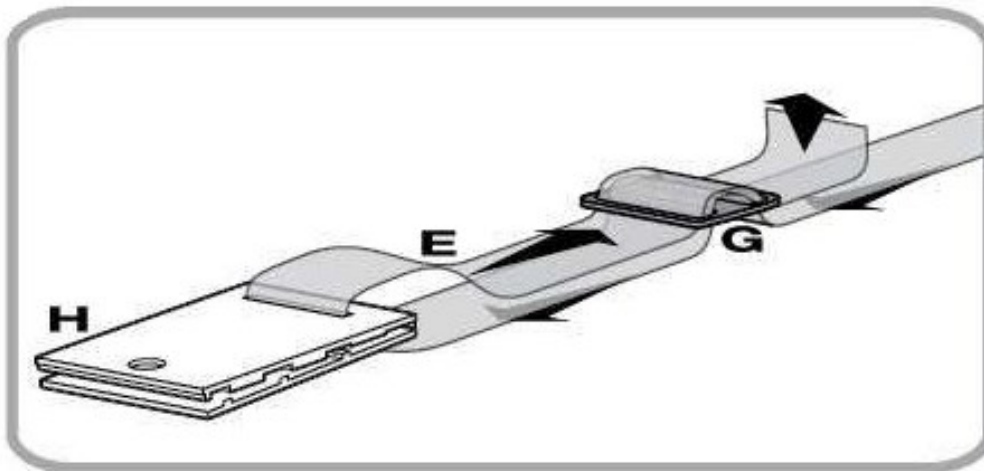


1. Reel seats **A** and **B** are connected with a base plate **J** on the outer skirting boards. For wood and plastic boards, connect one of the base plates **J** with the tapping screw **L** directly to the skirting board with the screw and nut **N**. After measuring the distance, the tube needs to be placed on the axis of the mounted side. After that the other side needs to be mounted as previously mentioned, after pushing the tube onto the loose side.
2. If it is required to adjust the length of the tubes, loosen the 3 screws **O** of **R**. Then adjust the length and fasten the screw **O** again.

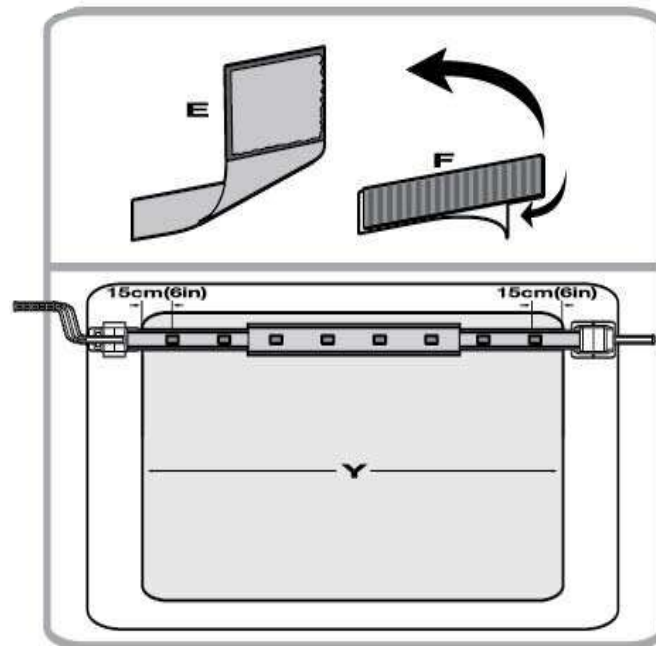
b) For above-ground pools with a framework



1. Position the reel seats **A** and **B** with clamp **K** on the framework of the pool and fasten
2. the screws adequately.
3. If it is required to adjust the length of the tubes, loosen the 3 screws **O** of **R**. Then adjust the length and fasten the screw **O** again.

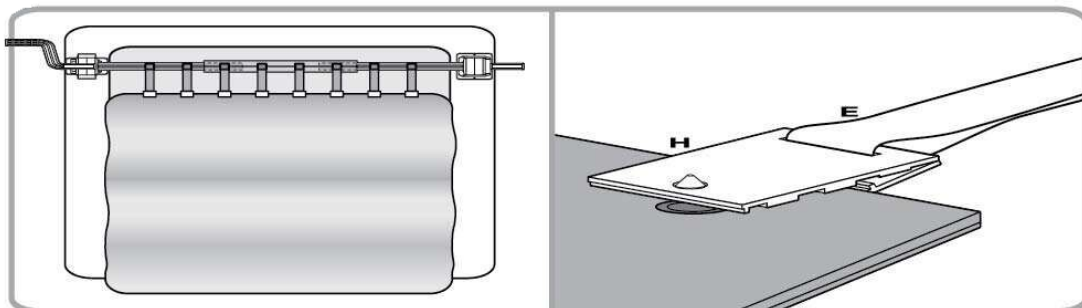


4. Mount **E**, **G** and **H** as shown in the picture.



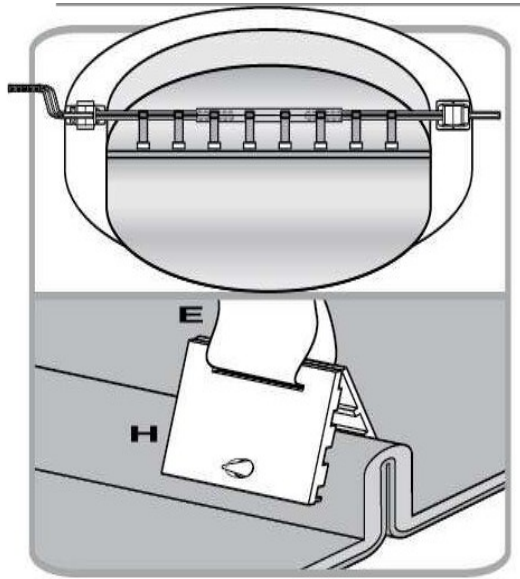
5. Loosen the eight Velcro strips of **F** from **E** and remove the protective sheet. Stick them in straight lines and with even gaps onto the tube (distance **Y**).

c) For rectangular infinity pools



Open the cover over the pool and position it. Attach the clamps **H** on the cover and makes sure to place them with regular distances. Ensure that the length of the belts enable the cover to lay flat on top of the pool, hindering any wind to get underneath the covering.

d) For round or oval infinity pools



Open the cover over the pool and clamp **H** to the cover with even gaps in between the Velcro on the tube, as shown in the picture.

Removing the reel system

To remove the reel system, push **A** and **B** out of the base plate **J**. Ensure that the reel seats are positioned on the edge, to remove them.

Important notice:

The reprint or reproduction, even of excerpts, and any commercial use, even in part, of this instruction manual require the written permission of WilTec Wildanger Technik GmbH.