

Operation Manual

Three-roll Bending Machine

62058



Illustration similar, may vary depending on model

Please read and follow the operating instructions and safety information prior to initial operation.

Technical changes reserved!

Illustrations, functional steps, and technical data may deviate insignificantly due to continuous further developments.



The information contained in this document may alter at any time without prior notice. No part of this document may be copied or otherwise duplicated without prior written consent. All rights reserved. WilTec Wildanger Technik GmbH cannot be held liable for any possible mistakes in this operating manual, nor in the diagrams and illustrations shown.

Although WilTec Wildanger Technik GmbH has made every possible effort to ensure that this operating manual is complete, accurate, and up-to-date, errors cannot be ruled out entirely.

If you have found an error or wish to suggest an improvement, we look forward to hearing from you.

Send us an e-mail to:

service@wiltec.info

or use our contact form:

<https://www.wiltec.de/contacts/>

The most recent version of this manual in several languages can be found in our online shop:

<https://www.wiltec.de/docsearch>

Our postal address is:

WilTec Wildanger Technik GmbH
Königsbenden 12
52249 Eschweiler Germany

To return your goods for exchange, repair, or other purposes, please use the following address. Attention! To allow for a trouble-free complaint or return, it is important to contact our customer service team before returning your goods.

Retourenabteilung
WilTec Wildanger Technik GmbH
Königsbenden 28
52249 Eschweiler Germany

E-mail: **service@wiltec.info**

Tel: +49 2403 55592-0

Fax: (+49 2403 55592-15)



Introduction

Thank you for choosing to purchase this quality product. To minimise the risk of injury, we ask you to always take some basic safety precautions when using this product. Please read this operating manual carefully and make sure that you understand it.

Keep these operation instructions in a safe place.

Safety instructions

Read all safety instructions making sure that you understand them before using this device. Not obeying the safety instructions of this user's manual can lead to serious injuries.

Personal safety

- Do not use the device when being tired or under the influence of alcohol, drugs, or medicine.
- Wear appropriate clothing. Do not wear loose clothing, belts, or jewellery. Securely tie long hair together. They could get caught by moving parts.
- Always wear appropriate protection equipment. This includes anti-slip safety shoes, protection gloves, approved protection goggles, and hearing protection.
- Do not stoop down too far. Ensure a safe stand and keep your balance.
- Use the tool that matches the respective job to do. Never use the tool for a purpose that it is not intended to. This device is suitable for deforming metal plates with a max. width of 320 mm.
- Do not make any modifications to the device and only use it for its intended purpose.
- Before operating the device, check it for damaged parts.
- Have the device checked regularly. Maintenance should only be performed by a qualified person.

Working area

- Keep your working area tidy and well illuminated. A cluttered and poorly lit workplace increases the risk of accidents.
- Do not operate the device in explosive zones, e.g., near flammable liquids or gases.
- Do not expose the device to rain or humidity. Do not use it where there is a high air humidity.
- Keep children and unauthorised persons away from your working area. Never leave children unattended. Make sure that children cannot play with the device.
- The device is not intended for use by persons (including children) with impaired or limited physical, sensory and mental abilities, or lack of experience and/or real knowledge, unless they are supervised by a person responsible for their safety or follow the instructions made by this person on how to correctly use the device.

Delivery and packaging

- The bending machine is delivered assembled.
- First make sure that the device is complete. Check the packaging material for loose parts of the machine before disposing of it. In case you find loose parts, try to find the spots on the machine where a part is damaged or missing. Do not operate a defective device. First contact the client service.

Storage

- Store the device in a safe place when not using it for a long time.
- Keep it in a dry, well-ventilated place and out of children's reach.



Operation

- Fix the bending machine to the bench by clamping the lower part of the machine with the help of a vice.
- Make sure that the device is correctly assembled and adjusted before using it.
- Turn the crank handle to check if the two gear wheels **(5)** and **(19)** engage correctly and firmly.
- Make sure that the three rolls are clean and free from metal residues (see exploded view).
- Proceed as follows to modify the distance of rolls 1 and 2 **(10 and 9)**:
 - To adjust the distance, use the adjustment screws **(12)** and **(4)**.
 - Turn the adjustment screws clockwise to reduce the distance and to near roll 1 roll 2.
 - Turn the adjustment screws **(12)** and **(4)** anti-clockwise to increase the distance of roll 1 and roll 2.
- Slide the sheet to be bended between roll 1 **(10)** and roll 3 **(7)**. Make sure to keep it straight. Then tighten the fixing screws **(8)** and **(13)**. Adapt the rolls to the thickness of the sheet with the help of the fixing screws.
- Use the adjustment screws **(12)** and **(4)** to define the desired bending radius. After adjusting the radius, you can now begin to use the crank handle to bend the piece. Note that bending a piece cannot be undone, should the piece have been bent too much. Therefore, be very precise and careful when adjusting the radius.
- Repeat bending until both edges of the sheet touch each other or the desired bending degree has been reached.
- After bending, loosen all fixing elements (fixing screws, adjustment screws, etc.). Remove roll 1 **(10)** to be able to remove the piece on the right side of the machine.

Exploded view and parts list

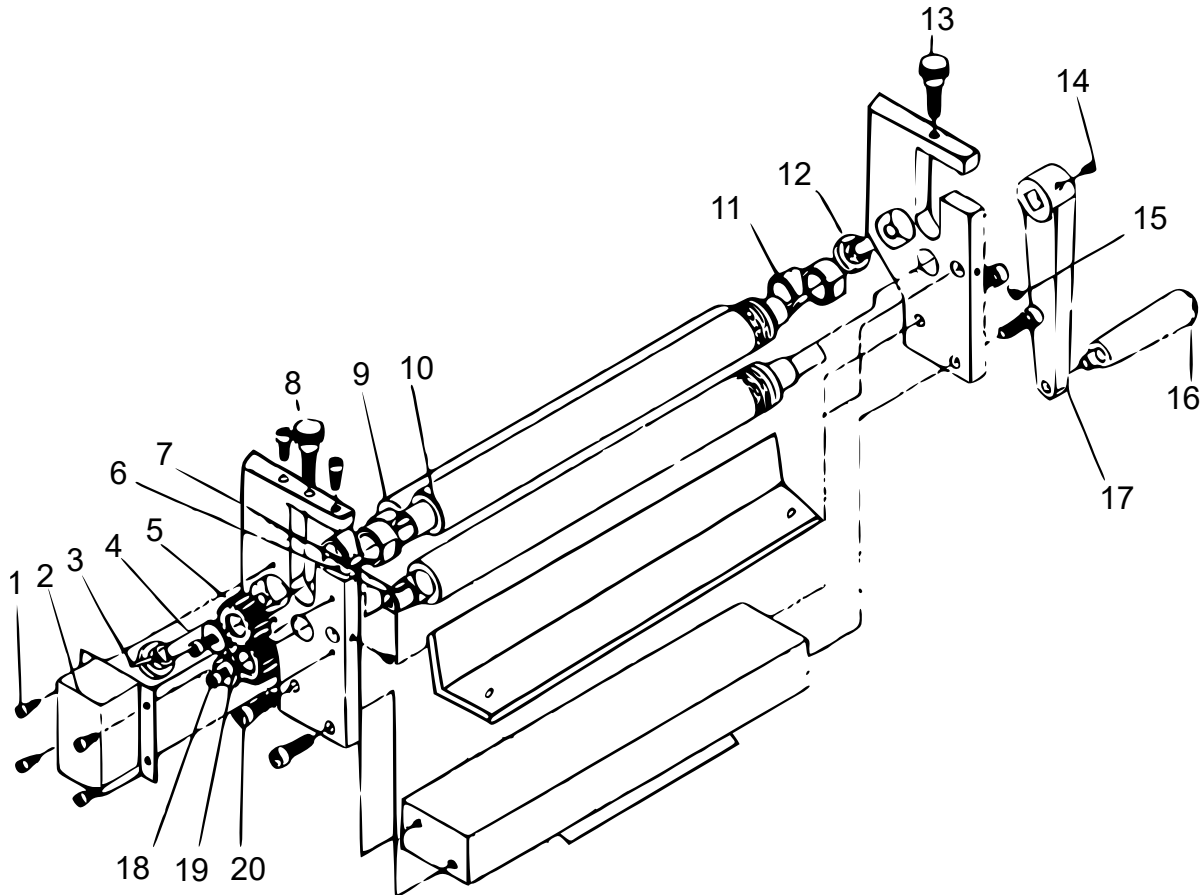


Illustration similar, may vary depending on model

| No | Name | No | Name |
|----|------------------|----|------------------|
| 1 | Screw | 11 | Sleeve |
| 2 | Cover | 12 | Adjustment screw |
| 3 | Screw-nut | 13 | Fixing screw |
| 4 | Adjustment screw | 14 | Screw |
| 5 | Gear wheel | 15 | Screw |
| 6 | Bearing plate | 16 | Screw (long) |
| 7 | Roll 3 | 17 | Crank handle |
| 8 | Fixing screw | 18 | Screw |
| 9 | Roll 2 | 19 | Gear wheel |
| 10 | Roll 1 | 20 | Screw |

Important Note:

Reproduction and any commercial use (of parts) of this operating manual, requires a written permission of WilTec Wildanger Technik GmbH.