

Operation Manual

Steam Wallpaper Stripper

62283



Illustration similar, may vary depending on model

Read and follow the operating instructions and safety information before using for the first time.

Technical changes reserved!

Due to further developments, illustrations, functioning steps, and technical data can differ insignificantly.

Updating the documentation

If you have suggestions for improvement or have found any irregularities, please contact us.



The information contained in this document may alter at any time without previous notice. It is prohibited to copy or spread any parts of this document in any way without prior written allowance. All rights reserved.

The WilTec Wildanger Technik GmbH cannot be held accountable for any possible mistakes in this operating manual, nor in the diagrams and figures shown.

Even though, the WilTec Wildanger Technik GmbH has undergone biggest possible efforts to ensure that the operating manual is complete, faultless, and up to date, mistakes cannot be entirely avoided.

If you should find a mistake or wish to make a suggestion for improvement, we look forward to hearing from you.

Send an e-mail to:

service@wiltec.info

or use our contact form:

<https://www.wiltec.de/contacts/>

The most recent version of this manual in various languages can be found in our online shop via:

<https://www.wiltec.de/docsearch>

Our postal address is:

WilTec Wildanger Technik GmbH
Königsbenden 12
52249 Eschweiler
Germany

To return orders for exchange, repair, or other purposes, please use the following address. Attention! To allow for a smooth execution of your complaint or return, it is important to contact our customer service team before returning the goods.

Returns Department
WilTec Wildanger Technik GmbH
Königsbenden 28
52249 Eschweiler

E-mail: **service@wiltec.info**

Tel: +49 2403 55592-0

Fax: +49 2403 55592-15



Introduction

Thank you for purchasing this quality product. **To minimise the risk of injury we urge that our clients take some basic safety precautions when using this device. Please read the operation instructions carefully and make sure you have understood its content.**

Keep these operation instructions safe.

Safety precautions

Caution: The use of this product entails the risk of severe scalding due to the high temperatures of the emitted vapour (approx. 100 °C). You should therefore make sure to understand and follow the security instructions below to minimise the risk of accidents. Infringement may lead to severe injuries as well as damage to the device and its surroundings.

- When using the device, always wear work gloves and, if necessary, use additional protective clothing appropriate for the job (protective goggles, breathing mask, etc.) to minimise the risk of injury.
- Never point the steam plate at other people, animals or objects that are sensitive to heat.
- Do not place any heavy objects on the device and make sure that the hose is not knotted or pinched.
- Be aware that the hot steam heats other materials in the vicinity and contact with them can also lead to injuries.
- Disconnect the device from the power supply when not in use and before filling, emptying, and performing any maintenance work.
- Always make sure that the main unit is on the floor or other stable, level surface from which it cannot fall.
- Do not use the device if the water level is below the marking for the minimum fill level of the water tank.
- Do not pull, hold, or carry the device by the cable or hose and keep both away from sources of heat and sharp edges.
- Do not use the device if the cable is damaged and do not try to repair it yourself. In such a case, the cable must be replaced before the device can be used again.
- Before working with the steam wallpaper stripper, make sure that switches and sockets in the work area have been adequately masked and make sure that no water vapour gets on them during work, as this can lead to short circuits.
- Keep your work area clean and make sure it is adequately lit. Untidy and poorly lit workplaces increase the risk of accidents considerably.
- Do not overestimate yourself, do not take unnecessary risks, and make sure that you always have a safe footing.
- Do not allow yourself to be distracted while using the device and do not use the device if you are tired, ill, or under the influence of alcohol, drugs, or medication.
- After switching off the device, allow it to cool down for at least 30 min before putting it away and only store it in a dry environment and not in the immediate vicinity of heat sources or easily flammable materials.
- Never use the device near easily flammable or explosive materials or in poorly ventilated rooms.
- Protect yourself against current discharges by avoiding contact with metallic or electrical objects.
- Never leave the device unattended during use and always keep it out of the reach of children and animals.
- Keep other people away from your work area as they may distract you, which increases the risk of accidents.
- This device is a DIY product; so, it is not suitable for industrial use. Plan and take sufficient breaks when working for longer periods to avoid overstressing the device and avoid damage.
- Do not disassemble the device; only have repairs carried out by trained personnel.
- Check the device for visible damage after use and remove wallpaper and other residues, as these could otherwise lead to a dangerous increase in pressure. Wait until the device has cooled down completely and is no longer dangerous before checking it.



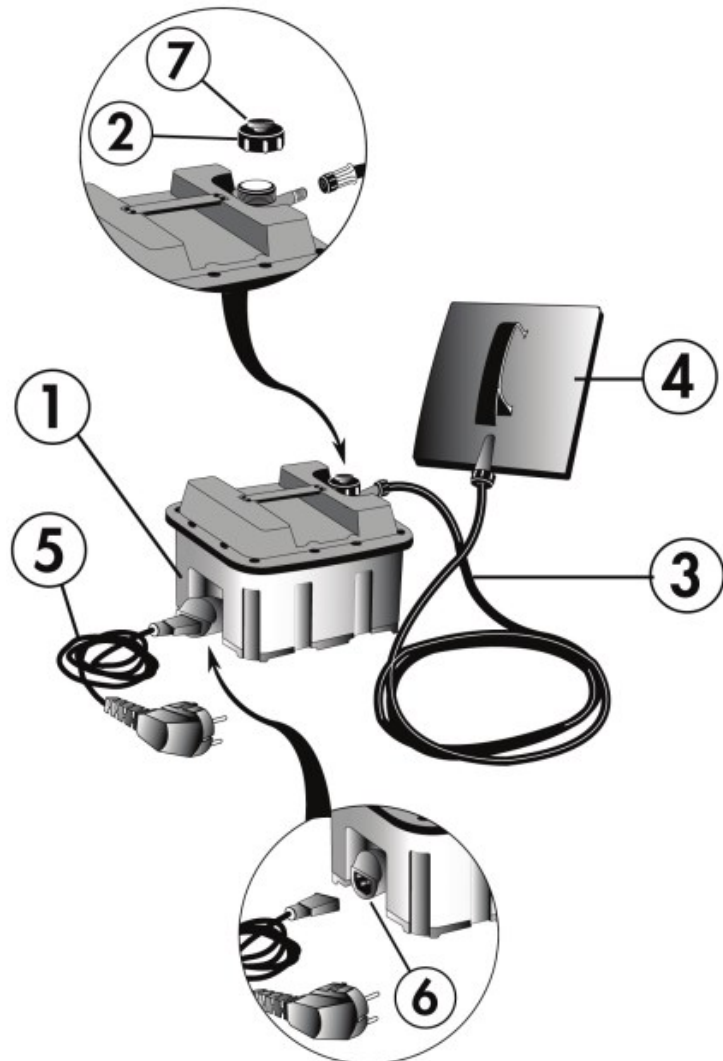
- To ensure that the device functions properly, check it for intactness before each use. Make sure that all parts have been connected correctly and securely and that there is no visible damage.
- **Danger!** Only use suitable accessories that have been approved by the manufacturer, otherwise serious injuries and damage to the device and the environment can occur.

Technical data

Voltage (V)		220–240
Frequency (Hz)		50
Power consumption (W)		2200
Water tank capacity (ℓ)		4.5
Length (m)	of steam hose	3
	of cable	1.8
Running time (min)		approx. 70
Size (cm)	main device	30×26×21
	steam panel	28×20
Weight (kg)		approx. 2,4
Protection type		IPX4

Parts list

No	Name
1	Water tank
2	Screw cap
3	Hose
4	Applicator
5	Power cord
6	Connector
7	Valve



First steps

1. Make sure that the device is not connected to the mains supply.
2. Remove the screw cap (2) and fill the tank (1) with fresh, additive-free water (max. 4.5 ℓ) (see Fig. A).
3. Properly reattach the screw cap (2). Be aware that the screw cap is equipped with a valve (7) capable of releasing excessive pressure (see Fig. C). In case of this part being damaged, the functionality of the device can only be guaranteed if an original spare part is used to replace it.
4. Connect the power cord (5) with the connector (6) as well as a secure wall outlet that is not located in the direct vicinity of the wall you want to work on (see Fig. B).
5. Now wait for the water to be heated before you start working. We advise to place the applicator inside a bucket until it is ready. It approximately takes 15 min for the device to reach its service temperature.



Figure A



Figure B

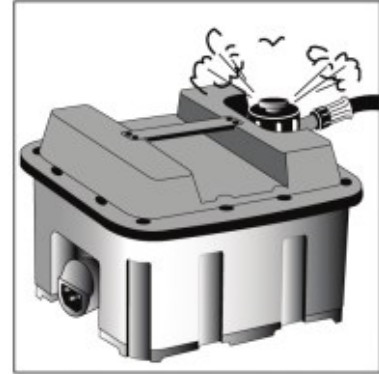


Figure C

Application

- The device is ready for use once the unpressurised vapour is released from the applicator **(4)**.
- Now incise the wallpaper before then slowly guiding the applicator **(4)** over the same to steam it.
- Pay attention to the condition of the wall and the wallpaper to optimise the efficiency of your work. (Thicker wallpapers might require you to wait 10–20 min before they can be removed.)
- Make sure to regularly check the water level.
- In case of the tank requiring to be refilled, make sure to disconnect the plug and wait 2 min before then opening the screw cap **(2)**.

Maintenance

This product does not require any specific maintenance procedures and only must be freed from remains of wallpapers as well as other residue after having been used. Only clean the plastic parts of the device using a soft and damp piece of fabric. Do not submerge the device in water or other liquids and do not use chemical cleaning agents or oils.

Attention: Maintenance of the electric parts of the wallpaper stripper should only be performed by specifically trained personnel.

Disposal regulations

EU guidelines regarding the disposal of scrap electric appliances (WEEE, 2012/19/EU) were implemented in the law related to electrical and electronic equipment and appliances.

All WiTec electric devices that fall under the WEEE regulations are labelled with the crossed-out wheeled waste bin logo. This logo indicates that this electric equipment must not be disposed with the domestic waste.

The company WiTec Technik GmbH has been registered in the German registry EAR under the WEEE-registration number DE45283704.

Disposal of used electrical and electronic appliances (intended for use in the countries of the European Union and other European countries with a separate collection system for these appliances).

The logo on the article or on its packaging points out that this article must not be treated as normal household waste but must be disposed to a recycling collection point for electronic and electrical waste equipment. By contributing to the correct disposal of this article you protect the environment and the health of your fellow men. Environment and health are threatened by inappropriate disposal.



Material recycling helps reduce the consumption of raw materials.

Additional information on recycling this article can be provided by your local community, municipal waste disposal facilities, or the store where you purchased the article.

Address:
WiTec Wildanger Technik GmbH
Königsbenden 12 / 28
D-52249 Eschweiler

Important notice:

The reprint or reproduction, even of excerpts, and any commercial use, even in part, of this instruction manual require the written permission of WiTec Wildanger Technik GmbH.