

Operation Manual

Portable Sandblaster

62297



Illustration similar, may vary depending on model

Read and follow the operating instructions and safety information before using for the first time.

Technical changes reserved!

Due to further developments, illustrations, functioning steps, and technical data can differ insignificantly.

Updating the documentation

If you have suggestions for improvement or have found any irregularities, please contact us.



The information contained in this document may alter at any time without previous notice. It is prohibited to copy or spread any parts of this document in any way without prior written allowance. All rights reserved.

The WilTec Wildanger Technik GmbH cannot be held accountable for any possible mistakes in this operating manual, nor in the diagrams and figures shown.

Even though, the WilTec Wildanger Technik GmbH has undergone biggest possible efforts to ensure that the operating manual is complete, faultless, and up to date, mistakes cannot be entirely avoided.

If you should find a mistake or wish to make a suggestion for improvement, we look forward to hearing from you.

Send an e-mail to:

service@wiltec.info

or use our contact form:

<https://www.wiltec.de/contacts/>

The most recent version of this manual in various languages can be found in our online shop via:

<https://www.wiltec.de/docsearch>

Our postal address is:

WilTec Wildanger Technik GmbH
Königsbenden 12
52249 Eschweiler
Germany

To return orders for exchange, repair, or other purposes, please use the following address. Attention! To allow for a smooth execution of your complaint or return, it is important to contact our customer service team before returning the goods.

Returns Department
WilTec Wildanger Technik GmbH
Königsbenden 28
52249 Eschweiler

E-mail: **service@wiltec.info**

Tel: +49 2403 55592-0

Fax: +49 2403 55592-15



Introduction

Thank you for purchasing this quality product. **To minimise the risk of injury we urge that our clients take some basic safety precautions when using this device. Please read the operation instructions carefully and make sure you have understood its content.**

Keep these operation instructions safe.

General safety instructions

Warnings and important safety instructions contained in this operation manual are not meant to cover all possible situations, but serve as a general guideline. Always use the device in all conscience and always be careful when using it.

Functions and technical specifications

Nozzle material	Ceramic	
Nozzle size (mm)	4 / 5 / 6 / 7	
Blasting hose length (m)	2.5	
Air consumption ($\frac{\text{l}}{\text{min}}$)	400–700	
Work duration (h)	approx. 3	
Max. tank pressure (bar)	6.2	
Tank capacity	(kg)	40
	(ℓ)	30

- Use 80 grit or abrasive material with smaller diameter.
- Keep this manual in a safe and dry place to be able to refer to it at any time.

Important safety instructions

- Keep your work area tidy and well-lit. Untidy and dark work areas may lead to accidents and injuries.
- Do not use the sandblaster in potentially explosive areas, e.g., near flammable liquids, gases or dusts. Tools create sparks that may ignite dust or fumes.
- Keep by-standers, children, and visitors at away while using the sandblaster. Distractions may lead to a loss of control of the sandblaster.
- Do not use tools forcibly. Use the right tool for the work to do. The right tool at the speed that it is intended for will work better and more safely.
- Store tools that are not being used out of children's and other untrained persons' reach. Tools operated by inexperienced users are dangerous.
- Always make sure that the switch is in the off position before you connect the sandblaster to the air supply. This tool can lead to objects being damaged and persons being injured if connected to the supply in the on position.
- Keep the air hose in a good condition and immediately replace damaged air hoses. Keep the air hose away from materials and surfaces that might damage it.

Do not use the sandblaster if

- feeling tired or exhausted or being under the influence of alcohol, drugs, or medicine;
- wearing loose clothing or jewellery; tie long hair together to keep it away from moving parts.



When using the sandblaster, make sure

- not to overreach yourself and to have a secure stance, otherwise you might be seriously injured;
- to wear appropriate work clothing and work equipment, e.g., protective goggles, a dust mask, non-slip shoes, etc.
- that all adjusting wrenches have been removed before you operate the device;
- that all power switches are in the off position before you connect the device to the power supply.

Always release the air accumulated inside the device, even if the hose has been removed. Always switch off the sandblaster, when it is not in use.

Caution! The following steps must be observed so that operating the device stays safe and its operating condition is not worsened. Incorrect care may lead to an electric shock or serious injuries.

- Secure and support the workpiece with a fastening device. Do not hold the workpiece in place by hand.
- Use the tool appropriate for the work that must be done. Using the appropriate tool will result in safer and more efficient work.
- Keep the device out of children's or other untrained persons' reach in a safe and dry place.
- Keep tools clean. Carefully maintaining tools will increase their service life and reduce the risk of injuries.
- Make sure that all movable parts can move freely and are correctly oriented.
- Only use accessories recommended by the manufacturer for the use on your tool model.

Warning!

- Always wear protective goggles and hearing protection while operating the device.
- Observe the air pressure capacity. Never operate the sandblaster at a pressure higher than 6.2 bar (90 psi).
- Use clean, dry, controlled pressurised air at 6.2 bar (90 psi) maximum pressure.
- Never use oxygen, carbon dioxide, flammable gases, or other cylinder gases as power source for this device.
- Make for a safe transport of the sandblaster. Always disconnect it from the air supply when moving the device. Pull the device by its handle to prevent it from tipping over.
- Avoid working alone. In the event of an accident, a colleague may call for help.
- While using the device, firmly hold the gun. Never direct the gun towards yourself, other people or animals. Keep all persons and animals at a safe distance from the work area.
- Observe a safety distance from the object to be sandblasted. If possible, always sandblast the object at a 45° angle to minimise the risk of sand, dirt and fragments being rebounded into the face or onto the body.
- Whenever possible, first try sandblasting on a small spot of the object to be sandblasted. If necessary, adapt the distance to the object and/or change the gun nozzle to obtain more effective results.

Warning!

Sandblasting with materials containing crystalline silicon dioxide can lead to serious or fatal respiratory diseases. Exposure to crystalline silicon dioxide may cause silicosis (a serious lung disease), cancer, or death. Exposure to aluminium oxide (dust created while removing material) can lead to eye, skin, and respiratory irritations. Therefore, **always** use a respiratory device, protective goggles, and a full-face protection. Avoid skin contact with the dusts created. Sufficient ventilation is required. Read and understand the following measures to reduce the exposure to crystalline silicon dioxide within the work area and to avoid silicosis-related injuries and death.

1. Do not use quartz sand (or any other materials that contain more than 1 % of crystalline silicon dioxide) as abrasive material and replace it with less dangerous materials.
2. Dispose appropriate air measurement devices to measure the rate of craftsmen's being exposed to dangerous materials.



3. Stop up the spread of dangerous material by taking suitable measures, e.g., by using blast cleaning systems and cabinets; thus, risks can be better controlled and people in the vicinity better protected from dangerous substances.
4. On the construction site, wear washable or single-use protective clothing. Before leaving the site, take a shower and put on clean clothes to avoid contaminating cars, homes, and other work areas.

Maintenance

- Maintenance only must be carried out by qualified personnel. Maintenance or repair carried out by unqualified personnel may result in injuries.
- Only use identical spare parts when maintaining the device and observe the instructions contained in the manual. Using non-approved parts or ignoring the maintenance instructions may result in an electric shock or injuries.

**Keep this manual
to be able to refer to it at any moment.**

This manual contains important safety, operation, maintenance and storing information related to the device. Before using it, carefully read all warnings, precautions, instructions. Otherwise, serious injuries, damages, or even death might follow.

Other important safety regulations

- Make sure that your work area is tidy and safe. Remove all foreign bodies such as nails, clamps, or other material.
- When operating this sandblaster, always use appropriate protective equipment including, but not limited to goggles, dust mask, respiratory device. Always work in a well-ventilated area to reduce exposure to harmful chemicals and dust particles.
- Keep your hands away from the blasting area.
- Do not reach under the workpiece.
- Some dusts generated during electrical grinding, grinding, sawing, grooving, and other construction activities contain chemicals known to cause cancer, birth defects, and other reproductive harms. Some examples of these chemicals are
 - lead from leaded paints,
 - crystalline silica from brick, cement, and other masonry,
 - arsenic and chromium from chemically treated wood.

Scope of delivery

- Hose (2.5 m)
- Tank
- Cover
- Hopper

Main components



No	Name
1	Hose holder
2	Tank
3	Handle
4	Hose connector
5	Wheel
6	Tank stand

Assembly

Handle

1. Align the holes in the upper part of the handle and the holes in the abrasive tank.
2. Slide a flat washer on a long screw and slide this screw through the holes of the handle and the abrasive tank.
3. Place a washer and lock nut on the end of the screw and tighten it by hand.
4. Repeat steps 2 and 3 for the other handle hole.
5. Firmly tighten the screw with a cross-head screwdriver and a wrench.

Stand and wheels

1. Align the holes in the rear side of the stand and the holes in the nether part of the handle.
2. Slide the wheel axle through the holes in the handle and the stand until it has a firm seat, approx. 9 cm on either side of the handle.
3. Place a wheel washer, then slide a wheel on either side of the wheel axle.
4. Place a wheel washer on either side of the wheel axle – make sure that the air valve in the wheel is facing out.
5. Insert the socket pin through each of the holes in the wheel axle and bend it so that the wheels cannot slip off.

Hose holder

1. Align the hole in the end of the holder and the hole in the front of the stand.
2. Place a washer on a long screw and insert the screw through the stand and holder hole.
3. Place a washer and a counter nut on the end of the screw and tighten it by hand.
4. Align both holes in the upper part of the hose holder and the holes in the abrasive tank.
5. Place a washer on a short screw and insert the screw through the hose holder and the abrasive tank.



6. Place a washer and a counter nut on a screw and firmly tighten it with a cross-head screwdriver and a wrench.
7. Repeat steps 5 and 6 for the other hose holder hole.
8. Firmly tighten the screw mounted in step 2 with a cross-head screwdriver and a wrench.

Blasting gun and abrasive hose

1. Place a hose clamp on either side of the abrasive hose. Firmly slide the abrasive hose end on the abrasive inlet of the blasting gun.
2. Position one of the abrasive hose clamps so that it is both on the abrasive hose and on the abrasive inlet of the blasting gun.
3. Tighten the hose clamp with a screwdriver and firmly slide the other abrasive hose end on the abrasive outlet located on the abrasive tank bottom.
4. Position the second hose clamp so that it is both on the abrasive hose and on the abrasive outlet of the abrasive tank. Tighten the clamp with a screwdriver.

Filling the tank

- Make sure that the material used is dry to prevent the dosing valve, the distributor, or the material hose from being blocked.
- Fill as much material into the tank **(1)** as the work to be done can be done. **Note:** If much work is to do, only fill $\frac{3}{4}$ of the tank with abrasive material and re-fill it, if necessary, until the work is done.

Important hint: If the air humidity is very high, make sure that your air compressor has a water separator to reduce the risk of the tank bottom or hose to be blocked.

Depending on the size (diameter) of the abrasive material, attach an appropriate nozzle on the sandblasting gun. To do this, unscrew and remove the nozzle cover. Place the nozzle seal on the hose adaptor and the appropriate nozzle on the nozzle seal. Then re-screw the nozzle cover on the hose adaptor to secure the nozzle seal and nozzle.

Use

Notes:

- The time that it takes to sandblast a surface particularly depends on the type of abrasive chosen. The abrasives include, e.g., glass and brass beads, mixed corundum, aluminium, silicon carbide, or nutshells. For best results, use an 80-grit or finer abrasive. 80-grit grain size must not be exceeded.
 - Your sandblaster is designed to operate at a maximum pressure of 6.2 bar (90 psi). Setting the air pressure to 5.5 bar is recommended.
1. After connecting the air hose (sold separately) to your compressor, connect it to the sanding gun connector.
 2. Make sure that the vent hole on the abrasive tank bottom is free. Always keep it free.
 3. Start the compressor.
 4. Check the tightness of the hose fitting of the sanding gun and of all hoses and fittings. If a leak is found, switch off the air compressor, disconnect the hose and immediately repair it.
 5. Point the sanding gun in a safe direction, this is to say away from persons, animals or any object that could be damaged by the direct or indirect spray jet.
 6. Keep the gun pushed on until the abrasive comes out through the nozzle.
 7. Firmly hold the gun of the sandblaster with both hands.
 8. Point the sandblasting gun on the workpiece so that the material hits the workpiece surface at an angle of approx. 45° .
 9. Press the control lever of the sandblasting gun to release the material.
NOTE: The flow rate of the material can be irregular when starting the sandblasting gun for the first time. If the material is dry, the flow rate will normalise after a minute.
 10. After finishing the sanding, release the control lever of the sandblasting gun. Switch off the air compressor.



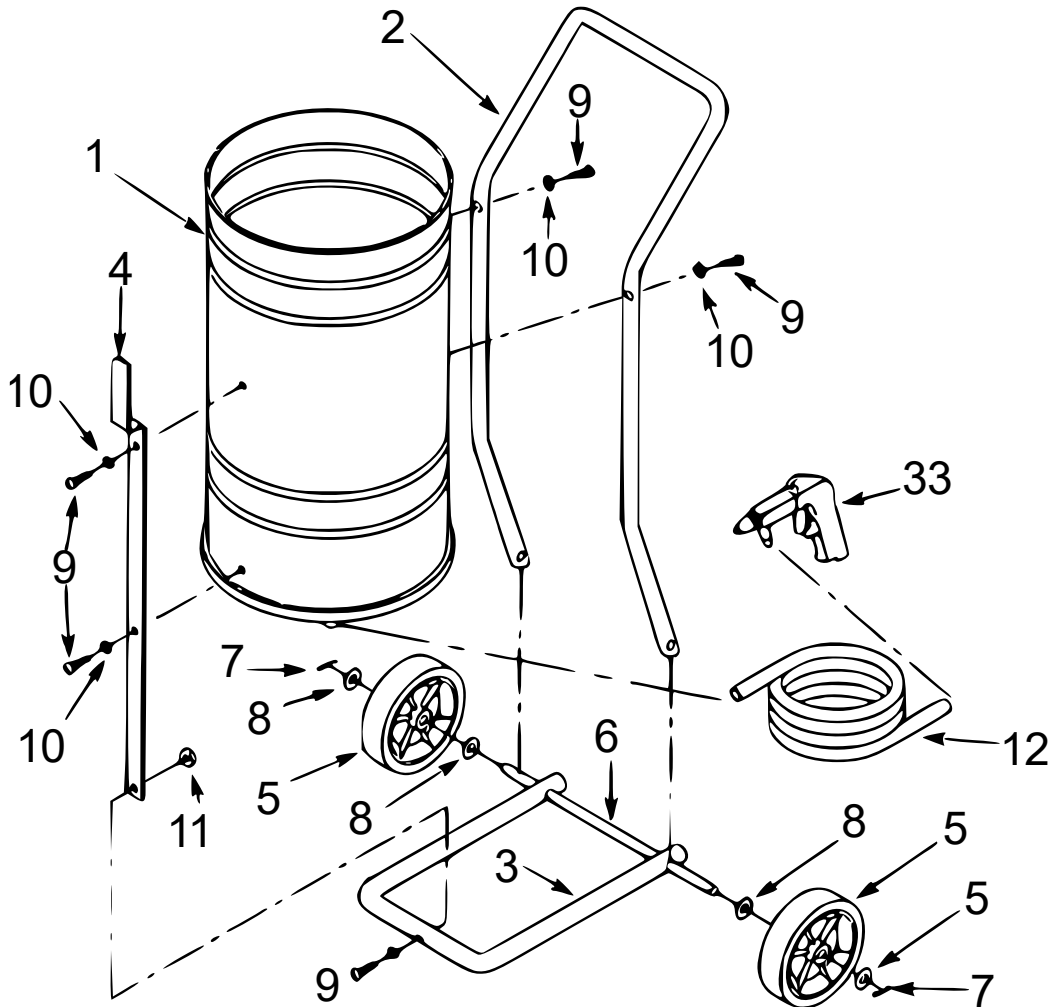
Maintenance

Caution! Keep your sandblaster clean and protect it from being damaged.

To clean the outer face of the sandblaster, wipe it clean with a clean, damp cloth and a mild detergent or solvent. Do not immerse the device in liquids.

After 10–12 operating hours, the nozzle should be controlled for wear. The nozzle, wearing out over time, should be replaced with the opening not being round any more or the abrasive no longer flowing evenly.

Exploded view and parts list



Nº	Name	Qty.	Nº	Name	Qty.
1	Tank	1	8	Washer	4
2	Tank handle	1	9	Screw	5
3	Base frame	1	10	Washer	5
4	Front hose holder	1	11	Nut	5
5	Wheel	2	12	Material hose	1
6	Axle	1	33	Sandblasting gun	1
7	Lock pin	2			

Important notice:

The reprint or reproduction, even of excerpts, and any commercial use, even in part, of this instruction manual require the written permission of WilTec Wildanger Technik GmbH.