

Operating Manual

Pressure Sprayer 16 ℓ

62308



Illustration similar, may vary depending on model

Please read and follow the operating instructions and safety information prior to initial operation.

Technical changes reserved!

Illustrations, functional steps, and technical data may deviate insignificantly due to continuous further developments.

The information contained in this document may alter at any time without prior notice. No part of this document may be copied or otherwise duplicated without prior written consent. All rights reserved. WilTec Wildanger Technik GmbH cannot be held liable for any possible mistakes in this operating manual, nor in the diagrams and illustrations shown.

Although WilTec Wildanger Technik GmbH has made every possible effort to ensure that this operating manual is complete, accurate, and up-to-date, errors cannot be ruled out entirely.

If you have found an error or wish to suggest an improvement, we look forward to hearing from you. Send us an e-mail to:

service@wiltec.info

or use our contact form:

<https://www.wiltec.de/contacts/>

The most recent version of this manual in several languages can be found in our online shop:

<https://www.wiltec.de/docsearch>

Our postal address is:

WilTec Wildanger Technik GmbH
Königsbenden 12
52249 Eschweiler
Germany

Do you wish to collect your goods? Our address for collection is:

WilTec Wildanger Technik GmbH
Königsbenden 28
52249 Eschweiler
Germany

In order to shorten the waiting time and to allow for an easy on-site processing, we kindly ask you to contact us briefly beforehand or to place your order via the webshop.

E-mail: service@wiltec.info
Phone: +49 2403 55592-0
Fax: +49 2403 55592-15

To return your goods for exchange, repair, or other purposes, please use the following address. Attention! To allow for a trouble-free complaint or return, it is important to contact our customer service team before returning your goods.

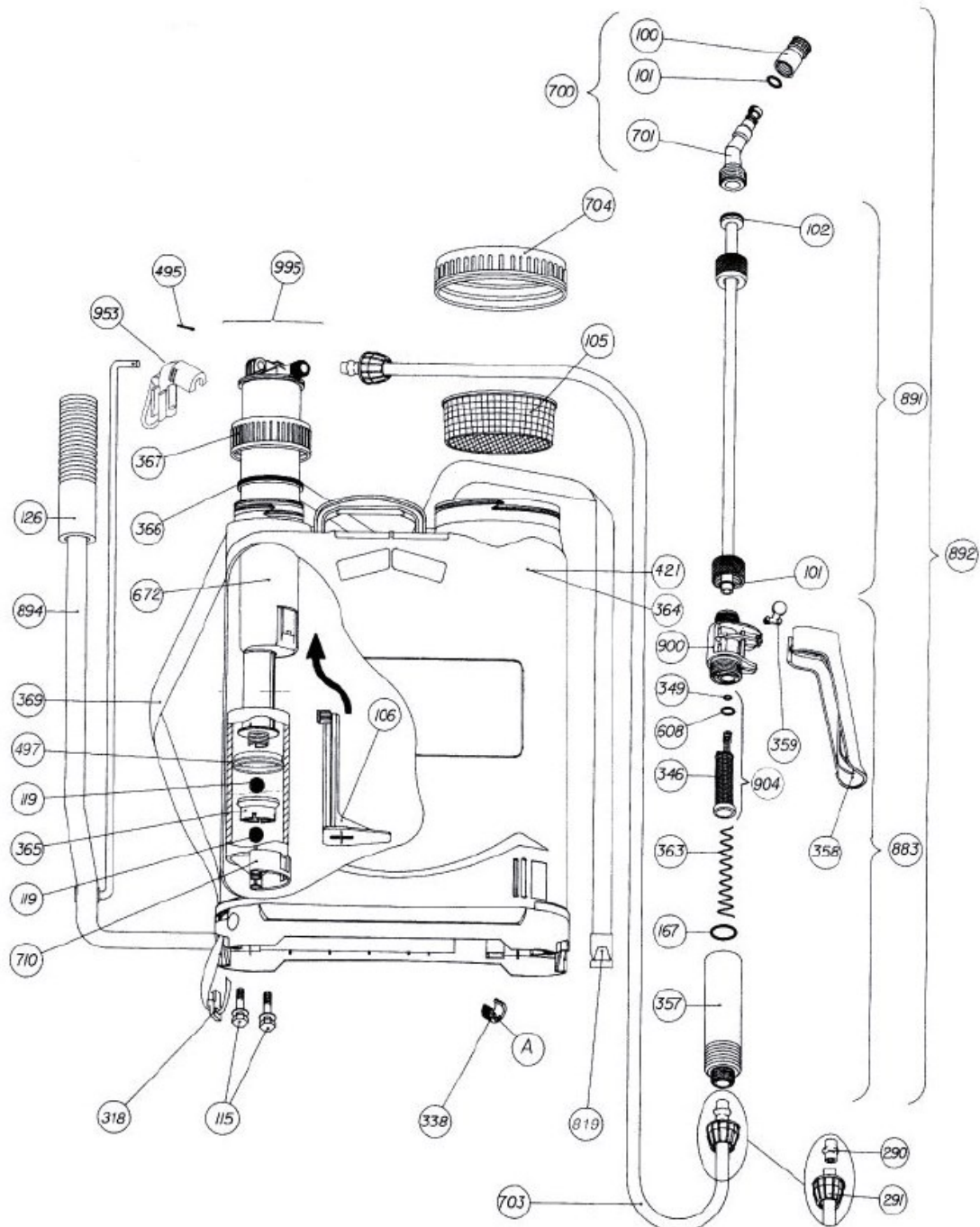
Retourenabteilung
WilTec Wildanger Technik GmbH
Königsbenden 28
52249 Eschweiler
Germany

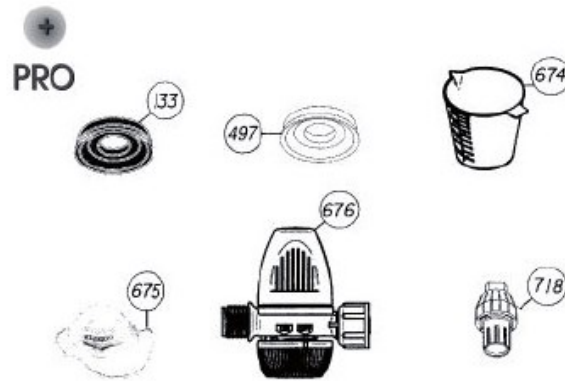
E-mail: **service@wiltec.info**
Phone: +49 2403 55592-0
Fax: (+49 2403 55592-15)

Introduction

Thank you for choosing to purchase this quality product. To minimise the risk of injury, we ask you to always take some basic safety precautions when using this product. Please read this operating manual carefully and make sure that you understand it. Keep these operation instructions in a safe place.

Exploded view





Parts list

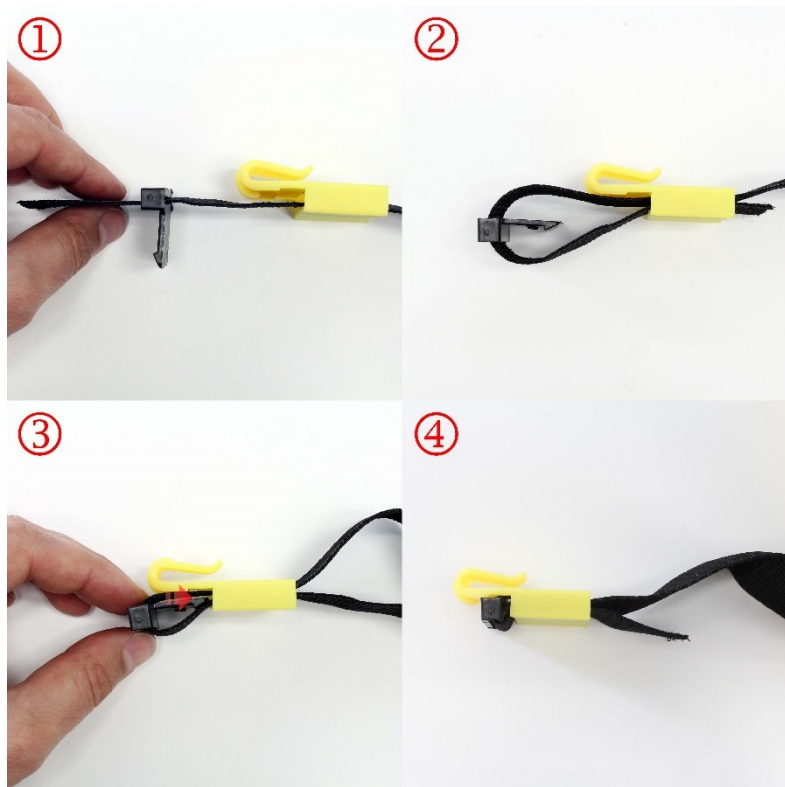
No	Name	No	Name
100	Nozzle 1.5 mm	369	Belt
101	O-ring AN-8	495	Metal pin
102	Flat washer	497	Synthetic seal
105	Container filter	608	O-ring AN-6
106	Pump piston	672	Pump
115	Screw 8×40 and flat washer	674	Dosing unit 100 ml
119	INOX ball ø 12 mm	675	Dust mask (not included)
126	Handle	676	Pressure controller
133	Rubber seal	700	Elbow (complete)
167	O-ring AN-14	701	Spray bend
290	Hose coupling	703	Hose (complete)
291	Nut	704	Container cap
318	Belt fixing	710	Cylinder with ball
338	Fastening clip	718	Herbicide nozzle
346	Filter	819	Belt fixing
349	O-ring AN-3	883	Spray handle (complete)
357	Handle	891	Conduit with sleeve
358	Spray handle	892	Spray gun (complete)
359	Hook	894	Pump lever (complete)
363	Filter spring	900	Handle cover
364	Container 16 l	904	Filter tube with O-rings
365	Shut-off valve	953	Spray gun holder
366	Circlip	995	Pump (complete)
367	Screw cap		

Features

- Resistant to treatment products (including copper derivatives)
- For left- and right-handed users
- Easy cleaning of built-in filter
- Continuous spraying thanks to lockable handle
- Easy level monitoring
- With exchangeable herbicide nozzles (**718**), dosing unit (**674**), pressure controller (**676**), and sealing rings (**133, 497**).

Initial operation

1. Connect the hose (**703**) to the spray gun (**892**) and the pump (**672, 995**). Attach the carrying belts to the bottom of the container. Use the yellow belt fixing (**318**) to secure them (see fig. 1–4). For transport reasons, the belt fixing (**318**) is stored inside the container filter (**105**).



2. Unscrew the container cap (**704**) and fill in the fluid. Leave the filter in the container.
3. Strap the sprayer to your back. Adjust the length of the carrying belts to your personal needs.
4. Push the pump lever down 8–10 times to build up the required pressure. Then use the spray handle (**358**) to spray the fluid. Set the desired spray jet on the nozzle (**100**). Note that 10–12 strokes/min generate a flow rate of 0.6–0.9 l/min.

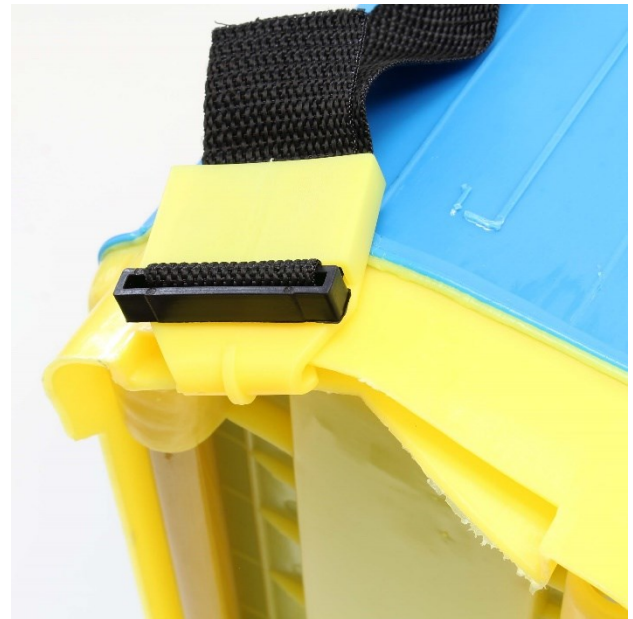
Note! The sprayer is pre-assembled with the pump lever for left-hand and the spray gun for right-hand use. If you want a reverse arrangement, proceed as follows:

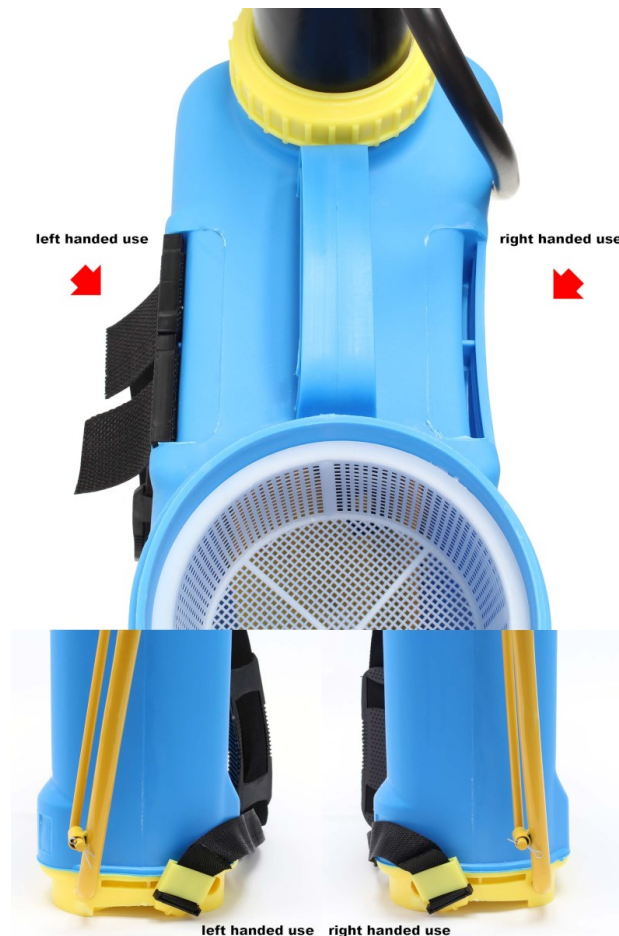
1. Use a fitting screwdriver to lift the spray gun holder (**953**) out of its fit on the vertical part of the joint rod.

2. Remove the metal pin (**495**) and separate fastening clip (**338**) on the bottom side of the container from the pump lever. Use a screwdriver if necessary.
3. Pull the pump lever out of the front fit on the side of the container and insert it into the back fit. Then reinstall the spray gun holder (**953**), metal pin (**495**), and fastening clip (**338**).



4. Remove the carrying belts from their fixing. Thread the belts on the opposite side of the container in the same way. Secure the belts to the bottom of the container with the belt fixing (**318**, **819**).





Maintenance and troubleshooting

- The device, the hose and the filter must be cleaned after every utilisation. Always use clean water. If necessary, add some washing-up liquid to the water.
- **Replace sealing rings (133, 497):** Use a fitting screwdriver to lift the spray gun holder (953) out of its fit on the vertical part of the joint rod. Then release the metal pin (495) and pull out the pump (672, 995). While pulling out the pump, the piston will fall into the container. Pick it up. Insert the cross at the bottom of the piston into the slots of the valve (365) and unscrew the valve. Then remove the ball. Replace the sealing rings (133, 497) and screw the valve back in. Do not forget to reinsert the ball into the valve. Use the cross at the bottom of the piston to screw the valve (365) firmly back onto the pump. Reinstall pump, spray gun holder, and pump piston.
- **Nozzle (100) blocked:** Clean nozzle with a jet of water.
- **Spray handle (358) stuck:** The integrated filter (346) may be polluted. Detach the handle (357) and pull out the filter. Clean filter. Lubricate all sealing rings and reassemble all parts.

Safety standards in the handling of herbicides

Storage

- Herbicides may only be stored in a room specifically designated for this purpose.
- The room must have good ventilation and be lockable. It must also be inaccessible to children and animals.
- Keep all equipment for mixing and preparing spray fluids and using the pressure sprayer in the same room.

Preparing the fluid

- First, check the expiration date and condition of the product.
- Read the instructions on the labels of the packaging and in the manuals. Follow the manufacturer's instructions precisely when using the product.
- Use only suitable and appropriately labelled equipment for mixing and preparing the fluid.
- After preparing, wash your hands and face carefully.
- Empty packaging or packaging with residues must be disposed of in accordance to regulations.

During use

- Wear appropriate protective equipment.
- The product must not come into contact with skin and eyes.
- Do not eat, drink, or smoke during use.
- Do not use the device in strong wind or headwind.
- The herbicide must not reach neighbouring estates or areas under cultivation. You must also ensure that it does not reach wells, rivers, or ponds.
- The spray handle can be locked to allow continuous spraying (s. fig.).



After use

- Dispose of empty packaging in accordance to regulations.
- Clean device and equipment thoroughly.
- Take care of personal hygiene and clean the clothes you wore during use.

Information in case of poisoning

- In case of poisoning or signs of poisoning, consult a doctor or a hospital immediately. If possible, take the packaging label of the herbicide with you.
- Clean affected skin areas with fresh water only. Do not use any household remedies.

Precautionary measures

- Strictly follow the instructions on the packaging labels that mark dangerous or toxic substances.
- For each product, observe the local regulations and the permitted period of application.
- If possible, do not use at high temperatures.
- Be careful near electrical equipment.
- Do not use combustible or flammable material.



- The device is intended for use only with water, herbicides, insecticides, or fungicides.
- Pressure sprayers must be subjected to a safety check by qualified personnel at least once a year.
- The pressure sprayer must always be used with the original hose from the manufacturer (ø 6–12 mm).

Important Note:

Reproduction and any commercial use (of parts) of this operating manual requires a written permission of WilTec Wildanger Technik GmbH.