

User's manual

Dog Kennel

62398



Illustration similar, may vary depending on model

Please read and follow the operating instructions and safety information prior to initial operation.

Technical changes reserved!

Illustrations, functional steps, and technical data may deviate insignificantly due to continuous further developments.

The information contained in this document may alter at any time without prior notice. No part of this document may be copied or otherwise duplicated without prior written consent. All rights reserved. WilTec Wildanger Technik GmbH cannot be held liable for any possible mistakes in this operating manual, nor in the diagrams and illustrations shown.

Although WilTec Wildanger Technik GmbH has made every possible effort to ensure that this operating manual is complete, accurate, and up-to-date, errors cannot be ruled out entirely.

If you have found an error or wish to suggest an improvement, we look forward to hearing from you. Send us an e-mail to:

service@wiltec.info

or use our contact form:

<https://www.wiltec.de/contacts/>

The most recent version of this manual in several languages can be found in our online shop:

<https://www.wiltec.de/docsearch>

Our postal address is:

WilTec Wildanger Technik GmbH
Königsbenden 12
52249 Eschweiler Germany

To return your goods for exchange, repair, or other purposes, please use the following address. Attention! To allow for a trouble-free complaint or return, it is important to contact our customer service team before returning your goods.

Retourenabteilung
WilTec Wildanger Technik GmbH
Königsbenden 28
52249 Eschweiler Germany

E-mail: **service@wiltec.info**
Tel: +49 2403 55592-0
Fax: +49 2403 55592-15


Introduction





Thank you for choosing to purchase this quality product. To minimise the risk of injury, we ask you to always take some basic safety precautions when using this product. Please read this operating manual carefully and make sure that you understand it. Keep these operation instructions in a safe place.

Safety instructions

- After delivery, check the parts for completeness and intactness.
- Wear appropriate protective equipment (e.g., protective gloves).
- Only use the clamps and screws included. Using other components might cause damages.
- Make sure to assemble the kennel in a horizontal way and make sure that the construction stands safely and firmly.
- During assembly, keep children and animals away from the work zone.
- Place the kennel on as solid and dry a surface as possible. Also make sure that the surface is flat.
- Set up the kennel as sheltered from the wind as possible.

Parts list

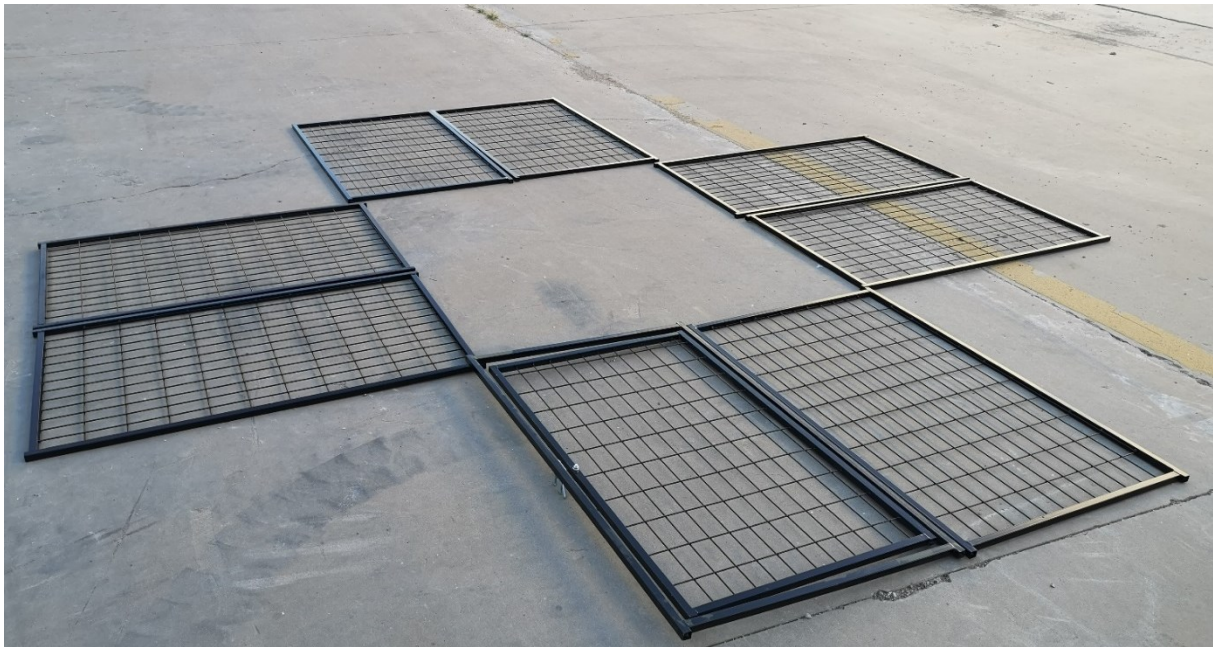
	Description	Quantity
	Side panels	7
	Door panel	1
	Roof frame	3
	Clamps	32
	Bolt groupe	16
	Fixing rope for roofing	10

		Screws (for the door)	1
		Hinge	2
		Tap	12
		R pin	1

Fitting

Step 1

Choose a location to place the kennel and lay out the side panels as shown.



Step 2

With the iron clamps, connect two side panels (2 clamps + 1 bolt group = 1 set). The fixation of the iron clamps is explained step by step in the chapter "Fixing the clamps."



Step 3

Connect the roof frame.



Step 4

Place the roof frame onto the side panels of the kennel.



Fixing the clamps

Step 1



Step 2



Step 3



Step 4



Step 5



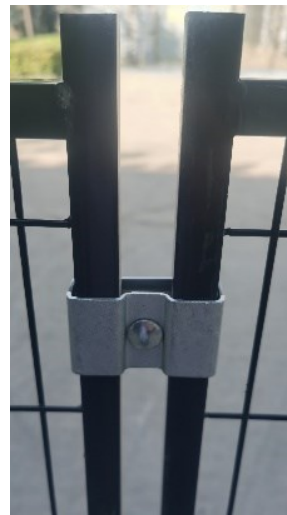
Step 6



Step 7



Step 8



Important Note:

Reproduction and any commercial use (of parts) of this operating manual, requires a written permission of WilTec Wildanger Technik GmbH.