

# User's Manual

## Hydraulic Gearbox Jack 62421

# wiltec



Illustration similar, may vary depending on model

Please read and follow the operating instructions and safety information prior to initial operation.

Technical changes reserved!

Illustrations, functional steps, and technical data may deviate insignificantly due to continuous further developments.



The information contained in this document may alter at any time without prior notice. No part of this document may be copied or otherwise duplicated without prior written consent. All rights reserved.

WilTec Wildanger Technik GmbH cannot be held liable for any possible mistakes in this operating manual, nor in the diagrams and illustrations shown.

Although WilTec Wildanger Technik GmbH has made every possible effort to ensure that this operating manual is complete, accurate, and up-to-date, errors cannot be ruled out entirely.

If you have found an error or wish to suggest an improvement, we look forward to hearing from you.

Send us an e-mail to:

[service@wiltec.info](mailto:service@wiltec.info)

or use our contact form:

<https://www.wiltec.de/contacts/>

The most recent version of this manual in several languages can be found in our online shop:

<https://www.wiltec.de/docsearch>

Our postal address is:

WilTec Wildanger Technik GmbH  
Königsbenden 12  
52249 Eschweiler – Germany

To return your goods for exchange, repair, or other purposes, please use the following address. Attention! To allow for a trouble-free complaint or return, it is important to contact our customer service team before returning your goods.

Retourenabteilung  
WilTec Wildanger Technik GmbH  
Königsbenden 28  
52249 Eschweiler – Germany

E-mail: **service@wiltec.info**

Tel: +49 2403 55592–0

Fax: +49 2403 55592–15

## Introduction

Thank you for choosing to purchase this quality product. To minimise the risk of injury, we ask you to always take some basic safety precautions when using this product. Please read this operating manual carefully and make sure that you understand it.

Keep these operation instructions in a safe place.

## Description

This hydraulic gearbox jack offers the users a large number of advantages:

- little weight
- large lifting range
- quick lifting
- exchangeable connection pieces
- firm and reliable connection

It can be used when mounting or unmounting the construction parts that must be lifted, lowered, or transported. It is the ideal tool for mounting and repair jobs to be done in a car or mobile workshop.

Nominal charge (kg)	Min. saddle height (mm)	Max. saddle height (mm)	Weight (kg)	Size (mm)
500	870	1790	54	530 × 255 × 800

## Safety instructions/warnings



The owner and/or user must have read and understood the operating instructions of the device before using it. Installed personnel should be cautious, competent, trained, and qualified in the safe handling of the working equipment used when working with motors and their components. Warnings should be read and understood.

- **Warning!** Make sure that all preliminary tests have been thoroughly done before using the jack.
- Only original spare parts may be used. Parts that are not approved can be dangerous and increase the danger of accidents and injuries.
- **Warning!** Only use this jack on a solid and firm surface. Make sure that the floor over which the jack is transported is tidy.
- **Attention!** Do not use this gearbox jack on concrete or other soft surfaces; it could sink in and tilt over.
- **Attention!** In case the gearbox jack should tilt or cant over, immediately interrupt the job that you are doing and remove yourself quickly from the danger zone.
- Only use the gearbox jack within a work zone appropriate for its operation and functions. Keep the work zone tidy and free from foreign bodies.
- Always make sure that your working area is sufficiently lit. A poorly lit workplace increases the risk of accidents.
- Before use, make sure that the weight and size of your gearbox do not exceed the capacity of the jack.
- Make sure that the vehicle is lifted and stabilised at the correct height before pushing the gearbox jack under the vehicle.
- Keep all unauthorised persons away from the gearbox jack while lifting, lowering, and transporting the jack and gearbox.



- Keep an eye on the correct balance and a firm stand. Make sure that the floor is not slippery and wear anti-slip shoes.
- Do not wear loose clothing or jewellery. Long hair must be tied back.
- **Warning!** Make sure that the load has a horizontal and centred position on the saddle of the jack and that it is fixed before trying to lift, lower, or transport the load.
- The lowering speed depends on the weight of the load and the adjustment of the purge valve.
- Make sure that the saddle of the jack has been lowered completely and that it is clean, dry, and oil-free before trying to move the jack with or without a load.
- You must pay attention to supervise the entire process until its finish.
- **Warning!** Do not use the gearbox jack when parts are damaged or missing.
- Do not exceed the nominal load capacity of the gearbox jack.
- Do not allow any untrained person to use the jack.
- During operation, do not hold any part of your body inside or under the gearbox jack.
- Neither lift nor lower the lifting ramp on which your vehicle is standing during the use of the gearbox jack.
- Do not transport the gearbox jack with or without a load when its saddle is lifted.
- Keep the gearbox jack away from humidity. Do not use it at humid moist or humid spots or in work zones where the air humidity is high.
- Do not use the device when being tired or under the influence of alcohol, drugs, or medicine.
- Do not use the gearbox jack to lift or support a vehicle and do not use it as load-carrying equipment.
- Only use the gearbox jack to unmount, transport, or mount a gearbox. Any incorrect use will increase the risk of accidents and injuries.
- Do not move the gearbox jack without the load having been secured sufficiently.
- Do not modify the gearbox jack and security valve.
- Do not remove any label from the jack. If any of the labels is damaged or unreadable, it must be replaced.
- Do not use brake fluid to refill the hydraulic unit. Only use hydraulic oil.
- Only have the gearbox jack maintain and lubricate by a qualified person.
- Before storing the jack in a safe spot, do make sure that all parts are clean, free from grease, and free from oil (especially the saddle).
- Lower the saddle completely when the jack is not used.

## Operation instructions

**Warning!** Before operating the jack, make sure to have read and understood the safety instructions and that you are able to follow them. Pay particular attention to the following aspects:

- positioning the jack under the load
- lowering the load
- transporting the load
- re-mounting the gearbox

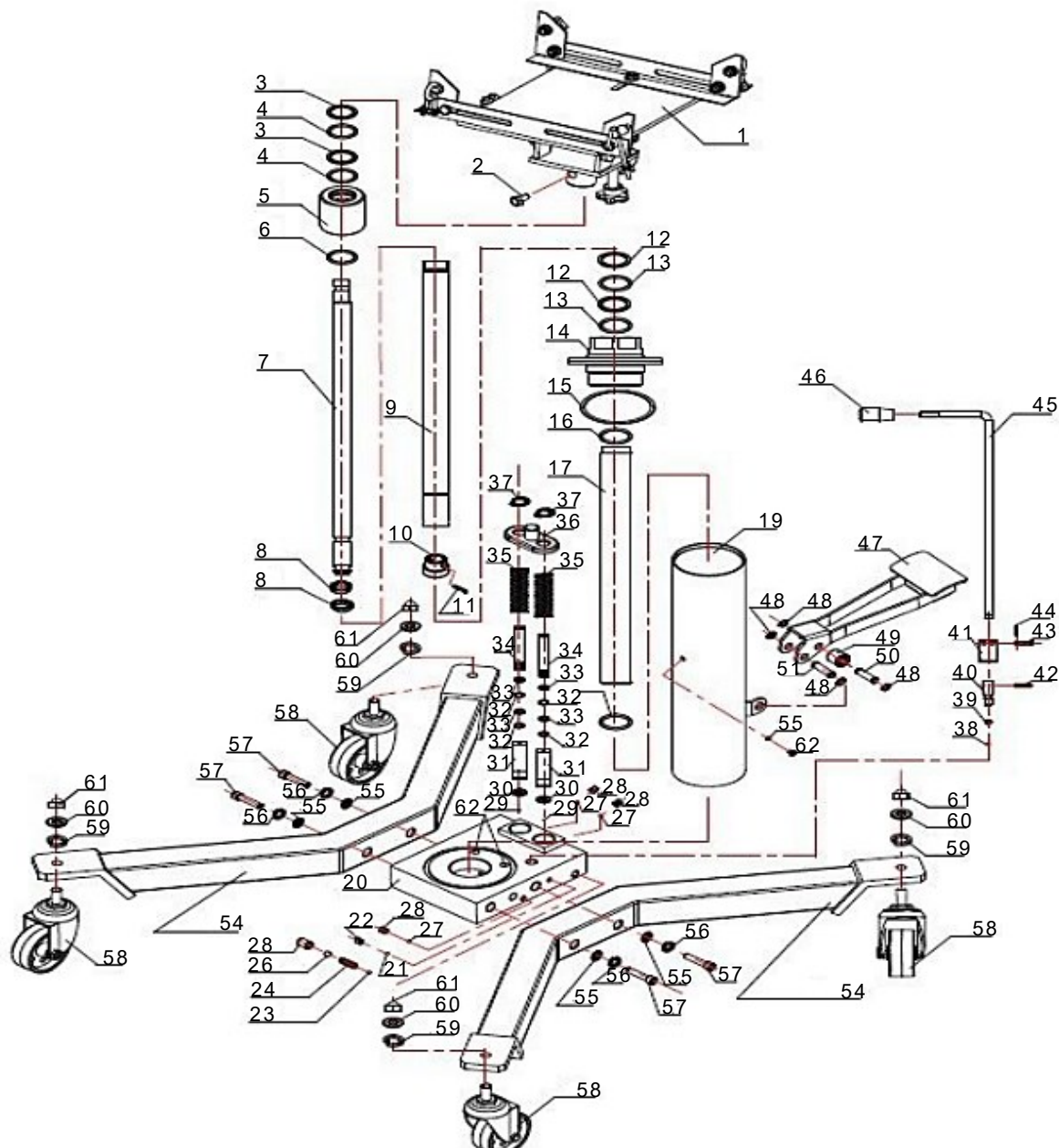
## Maintenance

**Attention!** Only qualified persons should perform maintenance or repair works.

- When the gearbox jack is not used, the saddle must be lowered completely to minimise corrosion of the cylinder and piston.
- Keep the gearbox jack clean and wipe off any trace of oil or grease. Lubricate all moving parts with acid-free oil.
- The oil cylinder is a sealed unit; it must not be opened. If maintenance is necessary, contact a qualified person.
- **Warning!** Only high-quality hydraulic oil may be used. Do not use any brake fluids.
- Before any use, go through the prior-checking list to make sure that all components are in perfect condition. If you detect a critical component, put the gearbox jack out of operation and take the necessary measures to repair the problem.

- Do not use the gearbox jack if you think that it has been exposed to an unusual stress or shock. If necessary, contact a qualified person.
- Check the pump piston and piston rod on a regular basis to find corroded spots. Clean exposed parts with a clean, oiled cloth.

## Exploded view and parts list



No	Name	Qty.	No	Name	Qty.
1	Support plate	1	32	O-ring	2
2	Screw	1	33	Nylon washer	2
3	Nylon washer	2	34	Pump piston	2
4	O-ring	2	35	Foot pedal spring	2
5	Small closure cap	1	36	Spring support	1
6	O-ring	1	37	Spring ring	2



<b>7</b>	Piston rod	1	<b>38</b>	Steel-ball element	1
<b>8</b>	Piston ring	2	<b>39</b>	O-ring	1
<b>9</b>	Small closure cap	1	<b>40</b>	Oil return valve	1
<b>10</b>	Middle cylinder	1	<b>41</b>	Valve cover	1
<b>11</b>	Piston	1	<b>42</b>	Locking pin	1
<b>12</b>	Nylon washer	2	<b>43</b>	Locking pin	1
<b>13</b>	O-ring	2	<b>44</b>	Splint	1
<b>14</b>	Large closure cap	1	<b>45</b>	Oil return	1
<b>15</b>	Nylon washer	1	<b>46</b>	Oil return cover	1
<b>16</b>	O-ring	1	<b>47</b>	Pedal	1
<b>17</b>	Cylinder	1	<b>48</b>	Retaining ring	4
<b>18</b>	Washer	1	<b>49</b>	Ball bearing	1
<b>19</b>	Housing	1	<b>50</b>	Connection pin	1
<b>20</b>	Base	1	<b>51</b>	Connection pin	1
<b>21</b>	Steel-ball element	2	<b>52</b>	O-ring	1
<b>22</b>	Stop screw	2	<b>53</b>	Screw	1
<b>23</b>	Steel-ball element	1	<b>54</b>	Foot	1
<b>24</b>	Spring	1	<b>55</b>	Washer	2
<b>25</b>	Steel-ball element	1	<b>56</b>	Spring ring	4
<b>26</b>	Stop screw	1	<b>57</b>	Screw	4
<b>27</b>	Steel-ball element	2	<b>58</b>	Castors	4
<b>28</b>	Stop screw	2	<b>59</b>	Spring ring	4
<b>29</b>	Steel-ball element	2	<b>60</b>	Washer	4
<b>30</b>	Washer	2	<b>61</b>	Cap nut	4
<b>31</b>	Pump body	2	<b>62</b>	Dust collar	2

**Important Note:**

Reproduction and any commercial use (of parts) of this operating manual, requires a written permission of WilTec Wildanger Technik GmbH.