

# Operation Manual

## Hammer Drill

62555



Illustration similar, may vary depending on model

Read and follow the operating instructions and safety information before using for the first time.

Technical changes reserved!

Due to further developments, illustrations, functioning steps, and technical data can differ insignificantly.

Updating the documentation

If you have suggestions for improvement or have found any irregularities, please contact us.



The information contained in this document may alter at any time without previous notice. It is prohibited to copy or spread any parts of this document in any way without prior written allowance. All rights reserved.

The WilTec Wildanger Technik GmbH cannot be held accountable for any possible mistakes in this operating manual, nor in the diagrams and figures shown.

Even though, the WilTec Wildanger Technik GmbH has undergone biggest possible efforts to ensure that the operating manual is complete, faultless, and up to date, mistakes cannot be entirely avoided.

If you should find a mistake or wish to make a suggestion for improvement, we look forward to hearing from you.

Send an e-mail to:

[service@wiltec.info](mailto:service@wiltec.info)

or use our contact form:

<https://www.wiltec.de/contacts/>

The most recent version of this manual in various languages can be found in our online shop via:

<https://www.wiltec.de/docsearch>

Our postal address is:

WilTec Wildanger Technik GmbH  
Königsbenden 12  
52249 Eschweiler  
Germany

To return orders for exchange, repair, or other purposes, please use the following address. Attention! To allow for a smooth execution of your complaint or return, it is important to contact our customer service team before returning the goods.

Returns Department  
WilTec Wildanger Technik GmbH  
Königsbenden 28  
52249 Eschweiler

E-mail: **service@wiltec.info**

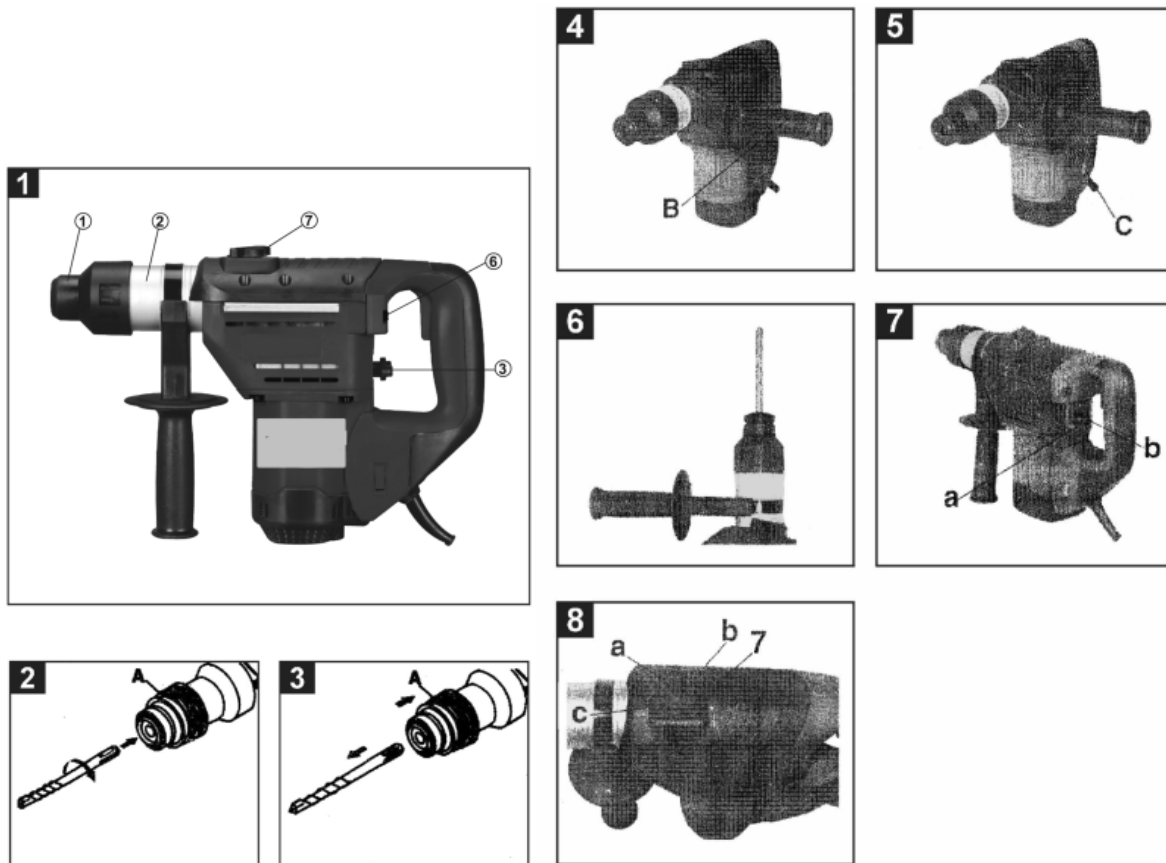
Tel: +49 2403 55592-0

Fax: +49 2403 55592-15

## Introduction

Thank you for purchasing this quality product. **To minimise the risk of injury we urge that our clients take some basic safety precautions when using this device. Please read the operation instructions carefully and make sure you have understood its content.** Keep these operation instructions safe.

## Main components



No	Name	No	Name
1	Dust protection	5	Speed regulator
2	Fixing device	6	Hammer stop switch
3	On/off switch	7	Drill stop switch
4	Handle support		

## Accessories

- Drill chuck 1.5–13 mm / ½–20 unf
- 3 × drill bits (∅ 8 mm / ∅ 10 mm / ∅ 12 mm) SDS Plus
- Flat chisel (25×250 mm) SDS Plus
- Sharp chisel (250 mm) SDS Plus
- Lubricating grease
- Dust protection
- 2 × carbon brushes
- Box



## Technical specifications

<b>Voltage (V)</b>	230
<b>Frequency (Hz)</b>	50
<b>Power consumption (W)</b>	1050
<b>Max. rotation speed (<math>\frac{1}{\min}</math>)</b>	3000
<b>Max. drill power in concrete/steel/wood (mm)</b>	32
<b>Weight (kg)</b>	5.8
<b>Vibrations (<math>\text{m/s}^2</math>)</b>	12.8
<b>Sound power level (dB (A))</b>	112
<b>Sound pressure level (dB (A))</b>	99
<b>Protection class</b>	II

## Safety instructions



**Attention!** To protect yourself from electric shocks, injuries, or fire during use of electric devices, it is vital that you obey the safety precautions. Thoroughly read all information and instructions in this manual before using the device.

- Check if the voltage indicated on the nameplate matches the existing mains voltage.
- If using a cable drum, unwind the entire cable. The minimum line cross section should be 1,0 mm<sup>2</sup>.
- If wanting to use the electric hammer outside, make sure that your energy source is suitable for outdoor use and that the plug is protected from rain.
- Make sure to have a firm and secure stand when using the drill free-hand and while standing on a ladder or scaffold.
- Find covered electricity, water, or fuel conducts in walls with the help of a cable finder. Avoid touching live parts or connections.
- Wear hearing protection. Effects of a hearing loss are not immediately noticeable.
- Always wear protection goggles and a dust mask in case of great amounts of dust being generated during your work.
- Never use the device near flammable or steaming liquids.
- Always unplug the plug before performing cleaning or maintenance work. Keep the power cord away from oil, acids, hot surfaces, and sharp edges.
- Never overcharge the device.
- Secure workpieces correctly.
- **Important!** Absolutely obey all national safety prescriptions concerning installation, manipulation, and maintenance.
- Chisel and drill bits might be ejected out of the machine by accident, which might lead to severe injuries.
- Before beginning to work, always check if chisel or bit drills are correctly fixed in the chuck.
- Regularly check the chuck to find signs of wear and tear or damage.
- Never operate a hammer device before having pressed it against the workpiece (wall, ceiling, etc.).
- After having finished you work, unplug the plug before replacing the chisel or drill bit.
- Protect yourself and others from ejected particles. Wear a hard hat and install dividers.
- To protect your fingers from contusion and abrasion, always wear working gloves.
- Vibrations might cause hand-arm-system injuries. Make sure to be exposed to vibrations the less possible.
- Always place the power cord so that it is behind the device and led away from it.



- Store the device out of children's reach.
- During work, hold the device with both hands and make sure to have a safe and stable stand.

### Before using the device

- Check the spot where you will use the device. With the help of a cable finder, check if there are covered electricity, gas, or water conducts.
- Before plugging the plug in, make sure that the voltage given on the nameplate matches the existing mains voltage.

#### *Mounting and changing bits (Fig. 2)*

The device is equipped with an SDS Plus fixing system.

- Lubricate a bit with a light film of lubricating grease before mounting it.
- Pull back and hold the fixing sleeve (see Fig. 2).
- Push the dust-free bit all the way into the chuck and turn it. The bit is locked automatically.
- Check the lock by pulling the bit.

#### *Removing an SDS Plus bit (Fig. 3)*

Pull back and hold the fixing sleeve **(A)** to remove the bit.

### Using the device

#### *Switching it on and off (Fig. 1)*

- Switching the device in: Push the on/off switch **(3)**.
- Switching the device off: Shortly push the on/off switch **(3)** and let it got.

#### *Fixing the handle (Fig. 4)*

- For safety reasons, you may only use the hammer drill with the handles fixed.
- By turning the handle holder, you can adjust the handle so that you have a secure posture. Untighten and turn the handle holder counter-clockwise. Then re-tighten the handle holder.

#### *Speed regulation (Fig. 5)*

Adjust the rotation speed and impact number by turning the control dial. On the dial, you will find the indications "min." (lowest possible speed) and "max." (highest possible speed) as well as intermediate values.

#### *Dust collecting device (Fig. 7)*

Place the dust collecting device over the drill before performing hammer-drill work over head.



*Hammer stop switch and drill stop switch*

No	Symbol	Meaning
001		Percussion drilling
002		Drilling
003		Hammering/chiselling

If you only want to use the device as a drill, you can switch off the hammer function. Therefore, turn the switch **(7)** on top of the device to the corresponding symbol **002**. To re-activate the hammer function, the switch **(7)** must be re-adjusted to the symbol **001**.

You may switch off the drilling function of the percussion drill as well if you only want it to hammer/chisel. Therefore, turn the switch **(6)** in the handle interstice to the symbol **003**. To re-activate the drilling function, the switch **(6)** must be re-adjusted to the symbol **001**.



Please note that to perform percussion drilling, both switches must point at the corresponding symbol.

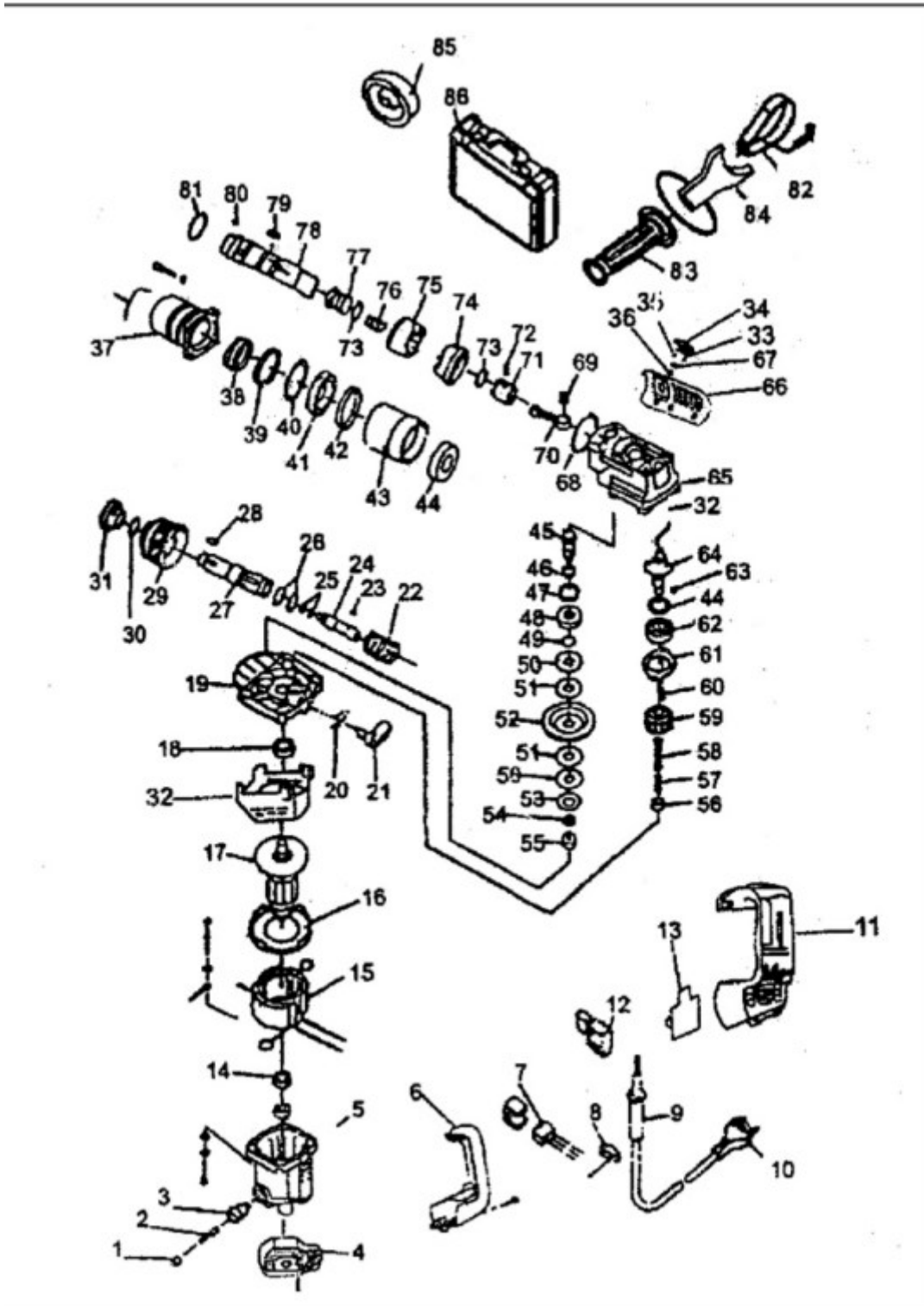


**Important!** Only impose a low pressure while percussion drilling. Too high a pressure leads to the motor being unnecessarily charged. Regularly check the drill bits. Re-sharpen or replace blunt drill bits.

**Maintenance**

- Do pull out the plug before performing any maintenance or cleaning work.
- Always keep the device tidy.
- Never use caustic detergents to clean the plastic parts of the device.
- To avoid dust from collecting, you should remove all dust from the vents with the help of pressurised air (max. 3 bar) after having finished your work.
- Regularly check the carbon brushes. Dirty or used carbon brushes lead to excessive spark formation and loss of performance.

Exploded view and parts list





<b>Nº</b>	<b>Name</b>	<b>Nº</b>	<b>Name</b>	<b>Nº</b>	<b>Name</b>
1	Brush carrier	30	O-ring	59	Spring washer
2	Carbon brush	31	Front cover	60	Distance ring
3	Brush holder	32	Aluminium housing	61	Holder
4	Rear cover	33	∅5 steel ball	62	Key
5	Housing	34	Wheel button	63	Centrifugal axis
6	Left handle	35	Spring	64	Gear box
7	Bushing	36	Keep ring	65	Cover
8	Capacitor	37	Outer sleeve	66	O-ring
9	Cable guard	38	Screw cap	67	O-ring
10	Flange	39	O-ring	68	Sliding needle bearing
11	Right handle	40	Washer	69	Piston rod
12	Switch	41	Bearing	70	Piston pin
13	Speed control switch	42	Distance ring	71	Piston
14	Bearing	43	Distance bushing	72	O-ring
15	Stator	44	Bearing cap	73	Cone gear
16	Deflector	45	Conic gear drive	74	Clutch
17	Armature	46	Rubber seal	75	Spring
18	Bearing	47	Holder	76	Impact body
19	Middle cover	48	Washer	77	Flat key
20	Distance ring	49	Washer	78	Cylinder
21	Lower wheel button	50	Friction sheet	79	Steel bal
22	Spring	51	Gear 2	80	O-ring
23	∅7 steel ball	52	Spring washer	81	Square-head bolt
24	Mallet	53	Ball bolt	82	Hoop
25	O-ring	54	Holder	83	Handle support
26	O-ring	55	Sliding needle bearing	84	Auxiliary handle
27	Spin sleeve	56	Washer	85	Dust protection
28	D-shaped rubber seal	57	Small armature	86	Toolbox
29	Spring	58	Gear		



## Disposal regulations

EU guidelines regarding the disposal of scrap electric appliances (WEEE, 2012/19/EU) were implemented in the law related to electrical and electronic equipment and appliances.

All WiTec electric devices that fall under the WEEE regulations are labelled with the crossed-out wheeled waste bin logo. This logo indicates that this electric equipment must not be disposed with the domestic waste.

The company WiTec Technik GmbH has been registered in the German registry EAR under the WEEE-registration number DE45283704.

Disposal of used electrical and electronic appliances (intended for use in the countries of the European Union and other European countries with a separate collection system for these appliances).

The logo on the article or on its packaging points out that this article must not be treated as normal household waste but must be disposed to a recycling collection point for electronic and electrical waste equipment. By contributing to the correct disposal of this article you protect the environment and the health of your fellow men. Environment and health are threatened by inappropriate disposal.



Material recycling helps reduce the consumption of raw materials.

Additional information on recycling this article can be provided by your local community, municipal waste disposal facilities, or the store where you purchased the article.

Address:  
WiTec Wildanger Technik GmbH  
Königsbenden 12 / 28  
D-52249 Eschweiler

Important notice:

The reprint or reproduction, even of excerpts, and any commercial use, even in part, of this instruction manual require the written permission of WiTec Wildanger Technik GmbH.