

# Instruction Manual

## Crane Trolley

62596-62598



Illustration similar, may vary depending on model

Please read and follow the operating instructions and safety information prior to initial operation.

Technical changes reserved!

Illustrations, functional steps, and technical data may deviate insignificantly due to continuous further developments.



The information contained in this document may alter at any time without prior notice. No part of this document may be copied or otherwise duplicated without prior written consent. All rights reserved. WilTec Wildanger Technik GmbH cannot be held liable for any possible mistakes in this operating manual, nor in the diagrams and illustrations shown.

Although WilTec Wildanger Technik GmbH has made every possible effort to ensure that this operating manual is complete, accurate, and up-to-date, errors cannot be ruled out entirely.

If you have found an error or wish to suggest an improvement, we look forward to hearing from you. Send us an e-mail to:

[service@wiltec.info](mailto:service@wiltec.info)

or use our contact form:

<https://www.wiltec.de/contacts/>

The most recent version of this manual in several languages can be found in our online shop:

<https://www.wiltec.de/docsearch>

Our postal address is:

WilTec Wildanger Technik GmbH  
Königsbenden 12  
52249 Eschweiler Germany

To return your goods for exchange, repair, or other purposes, please use the following address. Attention! To allow for a trouble-free complaint or return, it is important to contact our customer service team before returning your goods.

Retourenabteilung  
WilTec Wildanger Technik GmbH  
Königsbenden 28  
52249 Eschweiler Germany

E-mail: **service@wiltec.info**  
Phone: +49 2403 55592-0  
Fax: (+49 2403 55592-15)



## Introduction

Thank you for choosing to purchase this quality product. To minimise the risk of injury, we ask you to always take some basic safety precautions when using this product. Please read this operating manual carefully and make sure that you understand it.

Keep these operation instructions in a safe place.

## Safety instructions

- Certain works and activities must not be performed with this crane trolley, for they might cause material damages and personal injuries.
- It is forbidden to transport persons with this crane trolley.
- Do not transport charges loads over persons' heads.
- Load may only be lifted vertically. It is forbidden to pull loads transversally.
- Do not tear stuck or jammed loads off the crane trolley.
- Do not leave loads lifted unattended.
- Do not touch moving parts.
- It is forbidden to use the crane trolley for tearing, detaching, or lateral pulling.
- The maximum capacity must not be exceeded.
- Check the crane trolley for damages before using it. Do not use a damaged crane trolley, but have it repaired by qualified persons before using it again.
- Before every use, check the crane trolley for correct assembly.
- Before every use, check the rollers. Especially look for the lateral play between the rail support and rollers.
- Before every use, check the screws and crossbars for stability.
- Before beginning to work, persons using this crane trolley must read the manual (especially the safety instructions) or be informed about its content.
- Do not wear loose hair, clothing, or jewellery. Stuck in moving parts, they might cause injuries.
- You must not remove or obliterate plates or stickers that contain safety instructions and warnings. All safety instructions and warnings attached to the crane trolley must be kept complete and readable.
- **Important!** Being designed for manual use, the crane trolley must not be operated with the help of a motor, e.g., the gear must not be driven by a power drill.

## Working principle

The crane trolley is operated by pushing forward the load moving on the lower flange of the rail and the rotatable support pin. Thus, the crane trolley, that must be fixed with a manual block, becomes a flat conveyor.

## Assembly

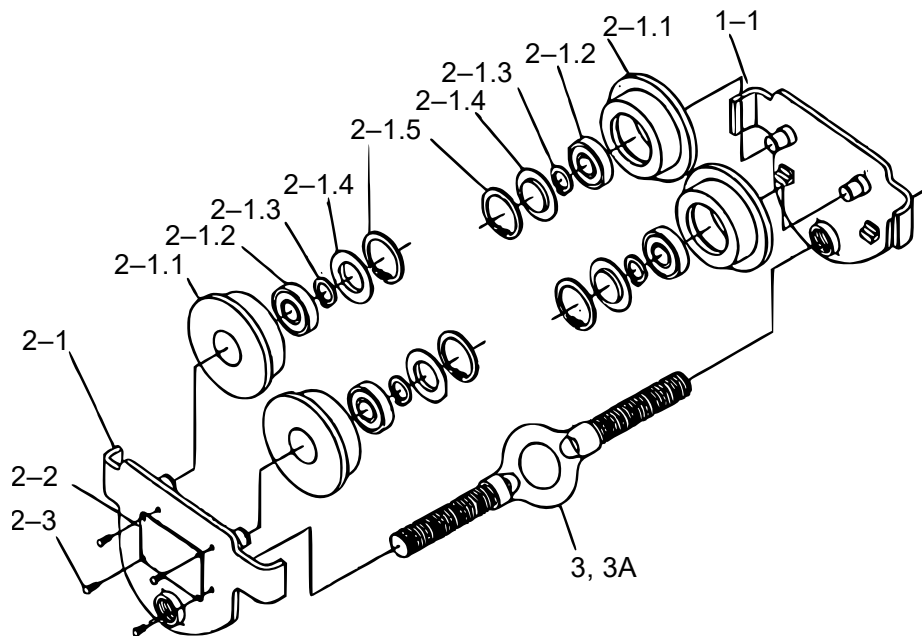
Assemble the crane trolley as follows:

- Measure the real width of the rail support.
- Evenly fix the necessary number of spacer washers to the internal side of the lateral gear plate so that the roller flanges of the rotatable gear bolts are 6 mm larger than the gear supports themselves.
- Suspend the maximum safe load to the gear and slowly move the device on the entire length of the rail to check its operability.
- Note that the maximum charge capacity depends on the model.

### Technical specifications

| Item number       |              | 62596  | 62597  | 62598  |
|-------------------|--------------|--------|--------|--------|
| Max. capacity (t) |              | 0.5    | 1      | 2      |
| Size (mm)         | Flange width | 45–220 | 55–210 | 55–205 |
|                   | Total length | 290    | 280    | 295    |
|                   | Total width  | 200    | 230    | 260    |
|                   | Total height | 135    | 152    | 180    |
| Net weight (kg)   |              | 4.45   | 6.95   | 12.1   |

### Exploded view and parts list



| No    | Name                  | No    | Name                |
|-------|-----------------------|-------|---------------------|
| 3, 3A | Rotatable support pin | 2-1.3 | Axle ring           |
| 2-3   | Grooved pin           | 2-2.1 | Ball bearing        |
| 2-2   | Nameplate             | 2-1   | Left-side assembly  |
| 2-1.5 | Lock ring             | 1-1   | Right-side assembly |
| 2-1.4 | Ball bearing cover    |       |                     |

Important Note:

Reproduction and any commercial use (of parts) of this operating manual, requires a written permission of WilTec Wildanger Technik GmbH.