

Operation Manual

Compressed air brake bleeder 62669



Illustration similar, may vary depending on model

Read and follow the operating instructions and safety information before using for the first time.

Technical changes reserved!

Due to further developments, illustrations, functioning steps, and technical data can differ insignificantly.

Updating the documentation

If you have suggestions for improvement or have found any irregularities, please contact us.



The information contained in this document may alter at any time without previous notice. It is prohibited to copy or spread any parts of this document in any way without prior written allowance. All rights reserved.

The WilTec Wildanger Technik GmbH cannot be held accountable for any possible mistakes in this operating manual, nor in the diagrams and figures shown.

Even though, the WilTec Wildanger Technik GmbH has undergone biggest possible efforts to ensure that the operating manual is complete, faultless, and up to date, mistakes cannot be entirely avoided.

If you should find a mistake or wish to make a suggestion for improvement, we look forward to hearing from you.

Send an e-mail to:

service@wiltec.info

or use our contact form:

<https://www.wiltec.de/contacts/>

The most recent version of this manual in various languages can be found in our online shop via:

<https://www.wiltec.de/docsearch>

Our postal address is:

WilTec Wildanger Technik GmbH
Königsbenden 12
52249 Eschweiler
Germany

To return orders for exchange, repair, or other purposes, please use the following address. Attention! To allow for a smooth execution of your complaint or return, it is important to contact our customer service team before returning the goods.

Returns Department
WilTec Wildanger Technik GmbH
Königsbenden 28
52249 Eschweiler

E-Mail: **service@wiltec.info**

Tel: +49 2403 55592-0

Fax: +49 2403 55592-15

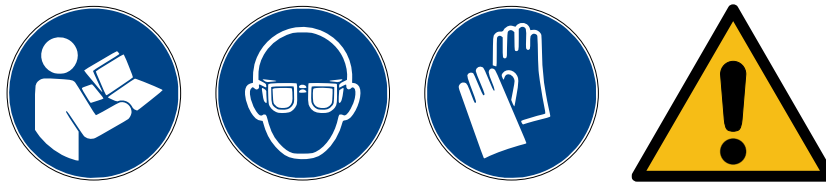
Introduction

Thank you for purchasing this quality product. **To minimise the risk of injury we urge that our clients take some basic safety precautions when using this device. Please read the operation instructions carefully and make sure you have understood its content.**

Keep these operation instructions safe.

Safety instructions

General safety instructions



CAUTION: When using the device, observe basic safety instructions to reduce the risk of injury and to avoid damage to the device.

- Read all instructions carefully before using the tool!
- This device is not intended to be used by persons (including children) with limited physical, sensory, or mental capabilities or lack of experience and/or knowledge, unless they are supervised or instructed by a person responsible for their safety.
- Children should be supervised to ensure that they do not play with the device. Cleaning and maintenance must not be carried out by children.

Safety of work area

- Keep work area clean and well-lit.
- Observe the conditions of your working area. Do not use machines or electric tools in damp or wet areas. Do not expose them to rain. Do not use electrically powered tools in the presence of flammable gases or liquids.
- Keep children away. Children are not allowed to enter work areas. They must not touch any machines, tools, or electrical cables.
- Store unused tools and accessories safely. When not in use, store tools in a dry place to prevent rust. Lock tools away and keep them out of children's reach.
- Use the right tools for the job. Do not use tools that are too small for work that requires a large industrial tool. There are specific purposes for which the tool is designed. It does its job better and safer when it is only used for these designated jobs. Do not modify the tool and do not use it for purposes for which it was not intended.

Safety of persons

- Wear suitable clothing. Do not wear loose clothing or jewellery, as these can be caught by machines. It is recommended to wear protective, electrically non-conductive clothing and non-slip shoes or safety shoes while working. Wear hair protection if you have long hair.
- Wear safety glasses and use ear protection.
- Do not lean too far forward. Make sure to have a safe stand and do not reach out over running machines.

Safety of handling tools and machines

- Maintain tools carefully. Check cables and hoses regularly, replace them if damaged or have them repaired by a qualified technician. Always keep handles clean, dry, and free of grease and oil.



- Remove adjustment tools. Before use, check whether the key and setting tools are removed from the device or the machine.
- Avoid unintentional starting. Make sure that there is no air pressure when the device is turned off and before hoses are connected.
- Stay vigilant. Fully concentrate on what you are doing and work with foresight. Do not use tools, devices, or machines when you are tired.
- Do not operate this device if you are under the influence of drugs or alcohol. If you are taking prescription medicine, carefully read the information leaflet to know possible side effects or restrictions for the operation of devices or machines. If you are unsure, do not operate this device.
- Check the device for damage. Before using this device, first check it for possible damage, only a device in perfect condition can work as intended. Any damaged parts should be replaced by a qualified technician.
- Only use identical spare parts for maintenance. The warranty becomes void if any other parts are used. Only use accessories intended for use with the device. Suitable accessories are available from the supplier of the device.
- **Pacemaker safety note:** People wearing a cardiac pacemaker should consult their doctor before operating this device.
- **Maintenance:** For your safety, maintenance and repair work should be carried out regularly, but only by a qualified technician.

Note! The operating characteristics of this device may vary depending on the air pressure and the capacity of the connected compressor.

Special safety instructions for the brake bleeding device

Attention! Only qualified persons are allowed to operate the brake bleeding device. Read and understand all safety instructions before operation.

- Wear safety glasses.
- Do not smoke in the work area.
- Only use the brake bleeding device in a well-ventilated area.
- In case of leakage, immediately interrupt the air pressure supply, fix the problem, and replace the defective hose if necessary.
- In case of leakage, immediately and carefully remove spilled liquids.
- Do not exceed the specified air pressure, this could lead to damage.
- Do not use detergents within this system.
- In case of leakage have a suitable collecting container ready.
- In case of fire have an ABC fire extinguisher ready.
- Before using the brake bleeding device, make sure that the gearshift lever on the vehicle is set to "P" (for automatic transmission) or "neutral" (for manual transmission). Apply the handbrake firmly and lock the wheels.
- Only use brake fluid with the brake bleeding device. Do not try to use it with other liquids. Contamination could lead to failure of the braking system.
- Follow local guidelines for the proper disposal of brake fluids. In any case, dispose of brake fluids in an environmentally responsible way.

Caution!

- Hot brakes may cause severe burns.
- Some brake pads contain asbestos, so you should wear a suitable respiratory protection. Avoid any contact with vehicle paint. Brake fluids cause paint damage.
- The warnings, notes, and instructions in these operating instructions cannot cover all possible operations and situations. Always use common sense and caution.

Unpacking

On unpacking, make sure that all parts listed below are included. If any parts are missing or damaged, immediately contact the supplier.

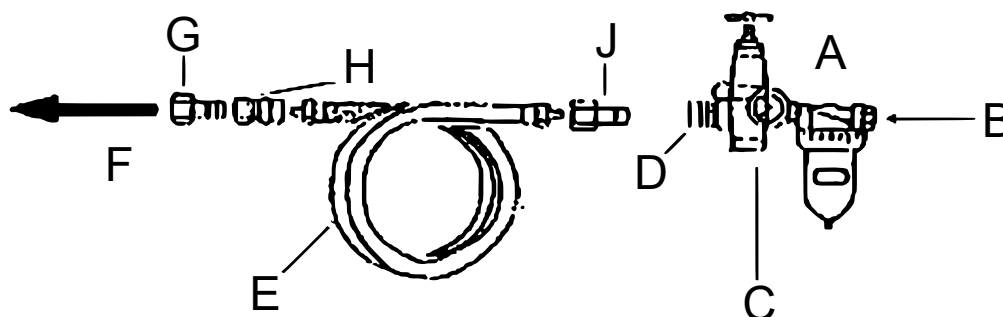


Nº	Name	Letter	Name
1	Handle	A	Collecting container
15	SP20 quick coupling	B	Adapter kit
16	Liquid hose	C	Rubber pipet

Preparation

- Always work in a well-ventilated area.
- Switch off the engine and apply the handbrake.
- Remove the wheels and look for the drain connection on the brake cylinders, referring to the manufacturer's manual.
- Switch on the compressed air compressor (not supplied) and place the compressed air hose directly next to the brake bleeding device. The compressor should have a moisture filter.

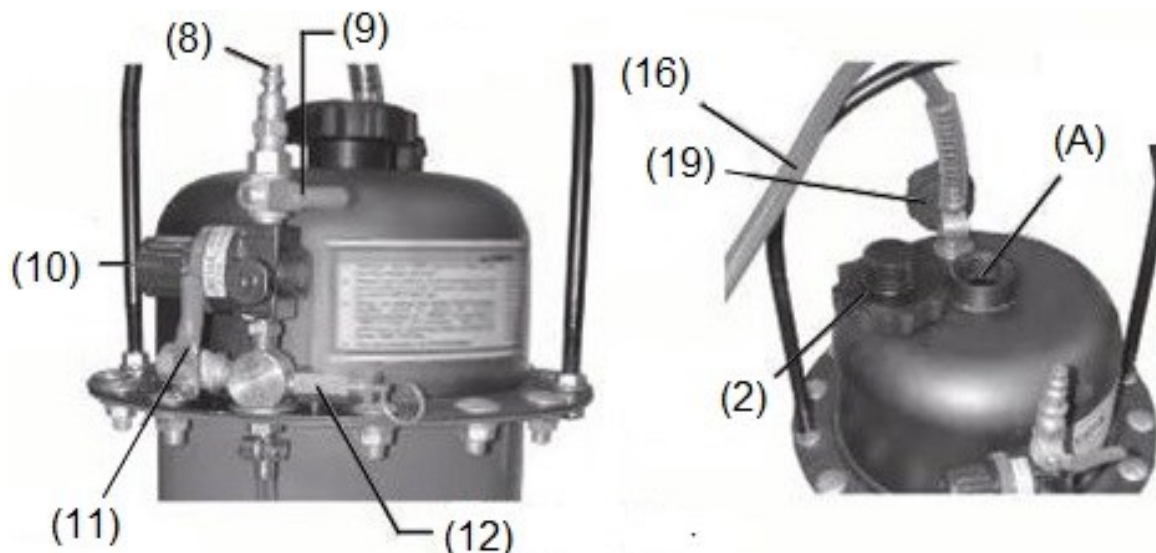
Air line



Letter	Name/explanation	Letter	Name/explanation
A	Filter	F	Connection to the quick coupling (8) on the brake bleeding device
B	From compressor	G	Quick coupling

C	Regulator	H	Quick connector
D	Quick connector	J	Quick coupling
E	Air hose		

Main components

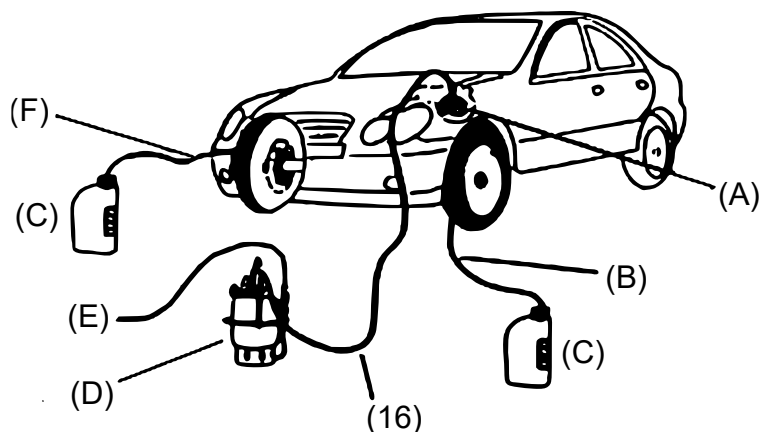


Nº	Name	Nº/letter	Name/explanation
2	Tank cap	12	Pressure relief valve
8	Air hose quick connector	16	Liquid hose
9	Air connection ball valve	19	Pressure gauge
10	Air pressure adjustment valve	A	Add brake fluid here.
11	Air release ball valve		

Bleeding the brake and topping up brake fluid

CAUTION! NEVER run the car engine in a closed room. **Carbon monoxide poisoning hazard!**

1. Place the brake fluid device next to the car.
2. Open the hood and locate the brake master cylinder tank.
3. Remove the lid of the master cylinder tank.
4. Find the appropriate adapter in the adapter kit.
5. Place the adapter on the master brake cylinder tank and fix it in place.
6. Unscrew the tank cap **(2)**. Fill in the desired amount of brake fluid (see manufacturer's manual for your car). Then screw the cover **(2)** back on.
7. Connect the fluid hose **(16)** to the adapter using the quick coupling **(15)**. Make sure that the ball valve **(9)** is closed.
8. Open the drain screw behind on the left and right of the rear brake cylinders, attach a transparent plastic hose (not supplied) to the drain openings, and connect the other end to the collecting tank.
9. Connect the air hose (not supplied) with the quick coupling **(8)** to the brake bleeding device.
10. Turn the ball valve **(9)** to ON (vertical) position. The tank is now under pressure.
11. Pull out the air pressure adjustment button **(10)** and set a tank pressure of between 1.4 to 2.7 bar (0.14 to 0.27 MPa) with the button under the air pressure gauge **(19)**.



Letter	Name	Letter/Ne	Name
A	Master brake cylinder	D	Brake bleeder
B, F	Transparent plastic hose (not supplied)	E	Air pressure line of compressor
C	Collecting container	16	Liquid hose

ATTENTION: Never exceed 2.7 bar (0.27 MPa) to prevent a risk of damaging the device, accessories, or hoses.

12. Slowly open the ball valve **(9)**. The brake fluid replacement process begins. Check all connections for leaks. If a leak is detected, turn the ball valve **(9)** to the OFF (horizontal) position and fix the problem.
13. While changing the fluid, depress the brake pedal abruptly and slowly release it again. Repeat this process several times.
14. When the collecting containers are full or when the colour of the emerging liquid changes from dark to light, the process is complete.
15. Screw the drain opening closed. Turn the ball valve **(9)** to the OFF position and remove the transparent plastic hose.
16. Follow local guidelines for the proper disposal of brake fluids. In any case, dispose of brake fluids in an environmentally responsible way.
17. Repeat steps 8 to 15 on the front brake cylinders.

Vehicles with ABS braking systems

Repeat all steps of "Bleeding the brake and topping up brake fluid" section with the following exceptions:

1. Bleed each wheel individually.
2. Set the gear lever to "P" or "neutral" and let it run during this process. When the process is complete, switch off the engine again.
3. Repeat this process on each individual brake.

Final steps

1. Refit the cover on the master brake cylinder.
2. Remove the air hose **(8)** from the brake bleeding device.
3. Disconnect the air hose and open the air release valve **(11)** to release the pressure.
4. Properly dispose of collected old fluids.

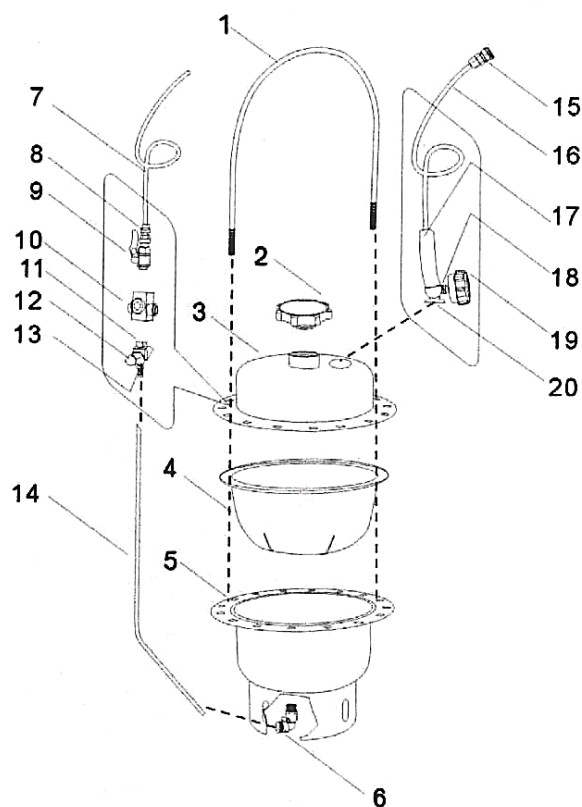
Caution! Before starting the vehicle again, press the brake pedal several times until the pedal feels firm. Check the brakes for possible damage/leaks. Test the brakes at low speeds before driving the vehicle under normal conditions.

Maintenance

Caution: Before carrying out maintenance work, ensure that the brake bleeding device is not under pressure.

1. Wipe up any spilled brake fluid.
2. Wipe parts of the brake bleeding device with a cloth.
3. Store the device in a clean, dry place

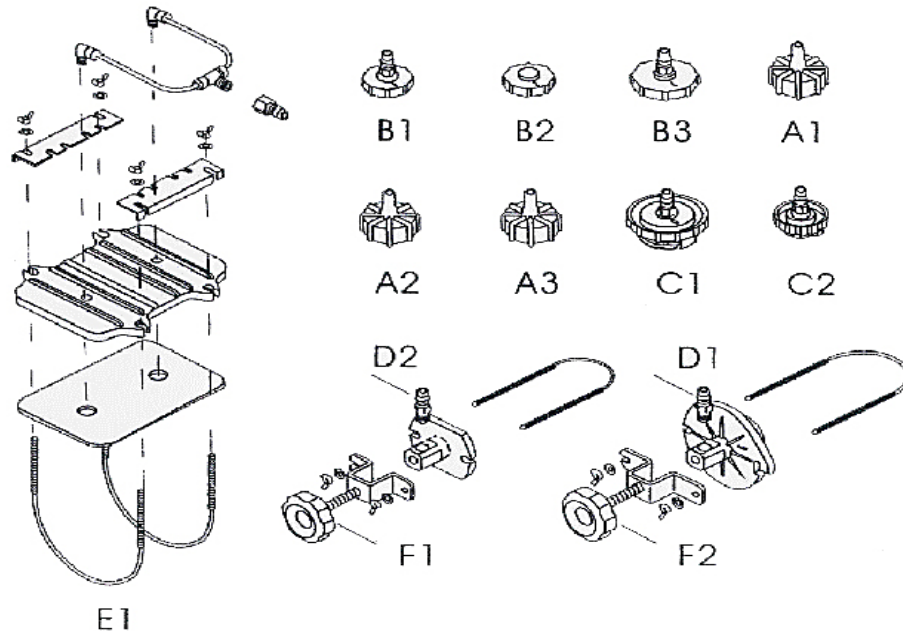
Exploded view and parts list



Nº	Name	Qty	Nº	Name	Qty
1	Handle	1	11	Coupling	2
2	Tank cap	1	12	Safety valve	1
3	Tank top	1	13	Coupling	1
4	Rubber membrane	1	14	Line	1
5	Tank bottom	1	15	Quick coupling	1
6	Connection PL802L	1	16	Hose	1
7	Air connection	1	17	Strain relief	1
8	Quick coupling	1	18	Coupling	1
9	Ball valve 1/4"	3	19	Gauge	1
10	Pressure adjustment valve	1	20	Gauge coupling	1

NOTE: Some parts are listed and shown for illustration purposes only and are not available as individual replacement parts.

List of adapters



PLEASE READ THE FOLLOWING CAREFULLY!

The manufacturer and/or distributor has presented the parts diagrams for reference only. Neither the manufacturer nor the distributor gives any hints to the buyer that the buyer is qualified to carry out any repairs on the product. On the contrary, the manufacturer or distributor explicitly states that all repairs and every part replacement must only be carried out by qualified technicians and **NOT** by the customer. The buyer bears all risks and consequences for carrying out repairs or parts replacement or modifications on the original product on his own.

Important note:

Reproduction and any commercial use (of parts) of this operating manual, requires a written permission of WilTec Wildanger Technik GmbH.