

# User's Manual

## Rear lights for trailer

62798



Illustration similar, may vary depending on model

Read and follow the operating instructions and safety information before using for the first time.

Technical changes reserved!

Illustrations, functional steps, and technical data may deviate insignificantly due to continuous further developments.

Updating the documentation

If you have suggestions for improvement or have found any irregularities, please contact us.



The information contained in this document may alter at any time without prior notice. No part of this document may be copied or otherwise duplicated without prior written consent. All rights reserved. WilTec Wildanger Technik GmbH cannot be held liable for any possible mistakes in this operating manual, nor in the diagrams and illustrations shown.

Although WilTec Wildanger Technik GmbH has made every possible effort to ensure that this operating manual is complete, accurate, and up-to-date, errors cannot be ruled out entirely.

If you have found an error or wish to suggest an improvement, we look forward to hearing from you. Send us an e-mail to:

[service@wiltec.info](mailto:service@wiltec.info)

or use our contact form:

<https://www.wiltec.de/contacts/>

The most recent version of this manual in several languages can be found in our online shop:

<https://www.wiltec.de/docsearch>

Our postal address is:

WilTec Wildanger Technik GmbH  
Königsbenden 12  
52249 Eschweiler – Germany

To return your goods for exchange, repair, or other purposes, please use the following address. Attention! To allow for a trouble-free complaint or return, it is important to contact our customer service team before returning your goods.

Retourenabteilung  
WilTec Wildanger Technik GmbH  
Königsbenden 28  
52249 Eschweiler – Germany

E-mail: **service@wiltec.info**

Tel: +49 2403 55592-0

Fax: +49 2403 55592-15



## Introduction

Thank you for choosing to purchase this quality product. To minimise the risk of injury, we ask you to always take some basic safety precautions when using this product. Please read this operating manual carefully and make sure that you understand it.

Keep these operation instructions in a safe place.

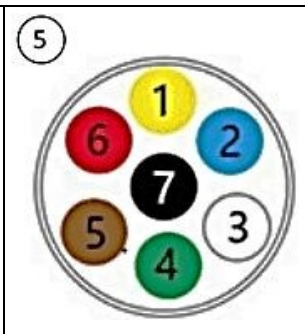
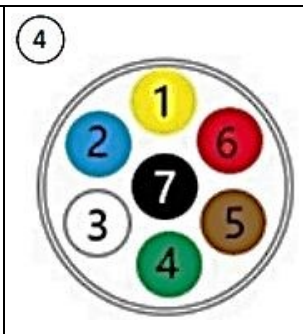
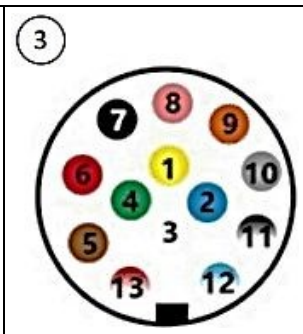
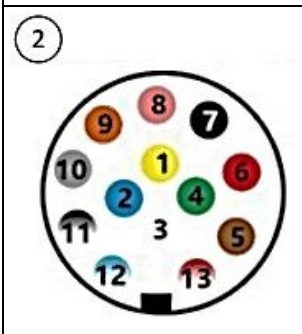
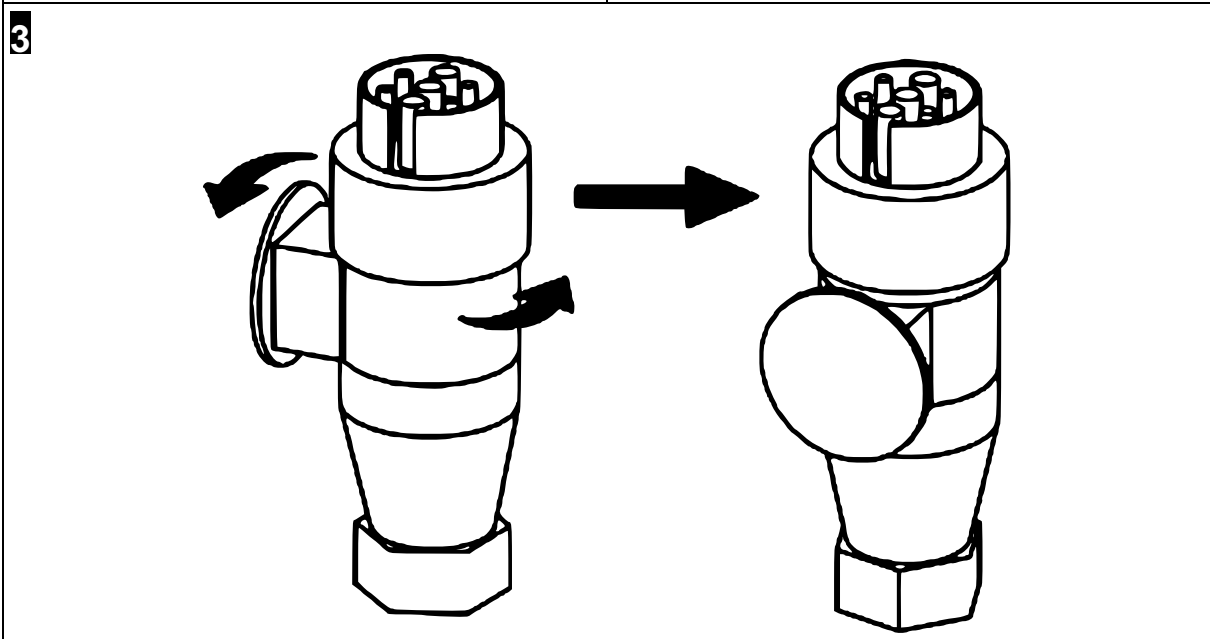
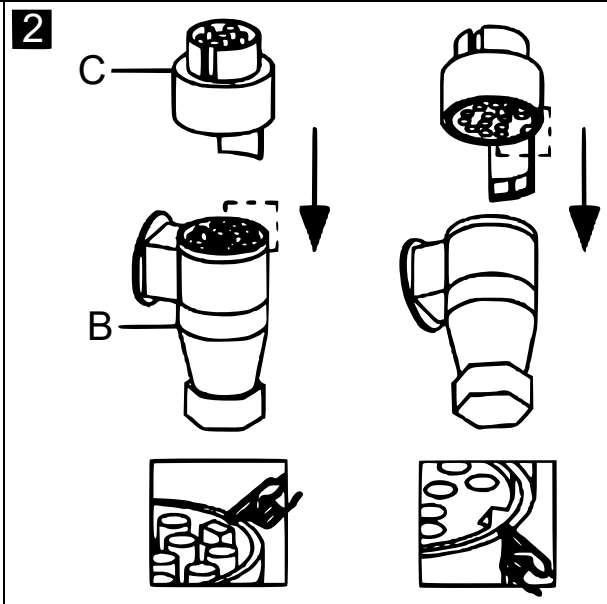
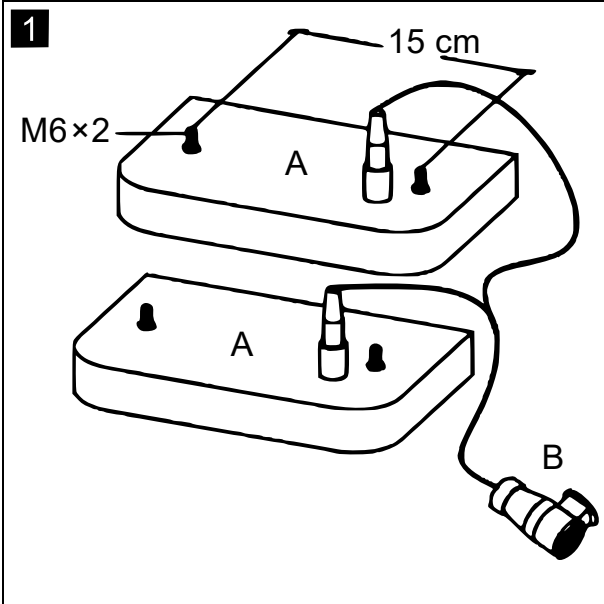
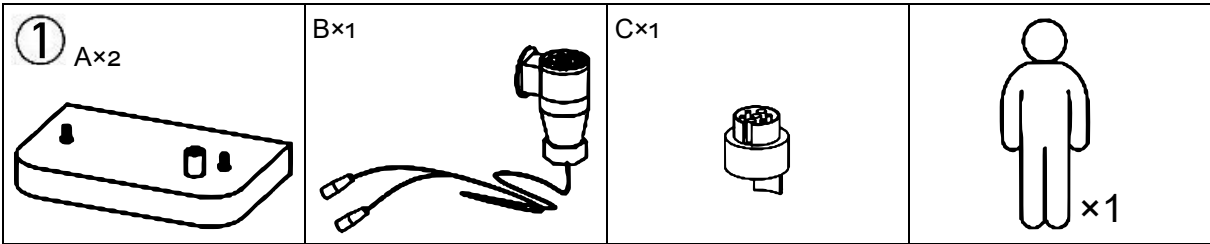
## Safety instructions

- Obey all pertinent prescriptions referring to installation and use.
- Fix the lights to the vehicle in a safe manner before driving off. Rear lights that have not been installed correctly impair the safety of the road traffic. Test the vehicle and trailer lights thoroughly before driving off. Trailer lights that have been connected in a wrong way are a danger, as they might generate false light signals.
- Only install the back lights when the corresponding vehicle is correctly parked. Switch off the engine and make sure that the hand brake has been applied.
- The rear lights are not appropriate for boat trailers that are driven into the water. The rear lights are splashproof, yet not completely water-tight.
- Do not modify the rear lights in any way and only use them for the intended purpose.
- Before use, check the device. Do not use it when parts are loose or damaged. Check if the insulation of cables or connection points is damaged or if they have been installed correctly. Any damage and error found must be repaired before driving off.
- This product is not a toy. Always keep it out of children's reach.
- Remove conductive elements (e.g., metal ornaments, watches, etc.) before installing the rear lights. Conductive elements can cause a short-circuit that can provoke a fire, damages, or injuries.
- The warnings, precautionary measures, and instructions of this operation manual cannot cover all possible conditions and situations. The user must understand that the use of his common sense and precaution are crucial.

## Mounting instructions (see ill.)

### *Wiring*

- When installing the cables, make sure that they are not live, cannot get stuck or twist, and do not touch moving components; otherwise, they might break.
- To secure the cables, use cable ties, and use rubber bushings for cables that must be installed via feedthroughs.
- The cables must not touch sharp objects that might damage the insulation. Check the installation zone to find narrows and humidity before beginning the installation. Sharp edges should be padded, humidity dried.
- Before driving off, check the correct function of all lighting elements. If there are components of the lighting of the vehicle or trailer that are inoperable, you must repair the errors before being allowed to drive off.
- Contact a qualified workshop if there are problems during the installation.





Terminal	Configuration of the 13-terminal trailer plug	Configuration of the 7-terminal trailer plug	
1	Yellow cable (left-hand flashlight)	Yellow cable (left-hand direction indicator)	
2	Blue cable (fog light)	Blue cable (rear fog light)	
3	White cable (earth)	White cable (earth)	
4	Green cable (right-hand flashlight)	Green cable (right-hand direction indicator)	
5	Brown cable (right-hand tail light/side lights)	Brown cable (rear light and left-hand licence plate illumination)	
6	Red cable (brake light/parking light)	Red cable (brake light)	
7	Black cable (left-hand tail light/side lights)	Black cable (rear light and left-hand licence plate illumination)	
8	Pink cable (reversing lamp)	See ill. 4	5-terminal plug
9	Orange cable (12 V supply from battery)	See ill. 5	7-terminal plug
10	Grey cable (12 V ignition on (for charging the battery or for cooling))	Grey cable (battery charging cable of cooling)	
11	White-black cable (earth to contact 10)	White-black cable (earth)	
12	White-blue cable (not used normally)	No target	
13	White-red cable (earth to contact 9)	White-red cable (earth)	

## Regulations for waste disposal

The Waste Electrical and Electronic Equipment Directive (WEEE Directive, 2012/19/EU) of the EU was implemented in the German law related to electrical and electronic equipment and appliances.

All WilTec electric devices that fall under the WEEE directive are labelled with the symbol of a crossed-out wheeled rubbish bin. This symbol indicates that this electric device must not be disposed of with the domestic waste.

WilTec Technik GmbH is registered with the German registration authority EAR (Stiftung Elektro-Altgeräte Register) under the WEEE-registration number DE45283704.

Disposal of used electrical and electronic devices (intended for use in the countries of the European Union and other European countries with a separate waste collection system for these devices).

The symbol on the packaging or the product itself indicates that this product must not be treated as normal domestic waste but must be disposed of at a recycling collection station for electrical and electronic waste.

By disposing of this product correctly, you contribute to the protection of the environment and the health of your fellow people. Inappropriate disposal threatens the environment and health.



Material recycling helps to reduce the consumption of raw materials.

Additional information about the recycling of this product can be provided by your local commune, the municipal waste disposal facilities, or the store where you purchased the product.

Address:  
WilTec Wildanger Technik GmbH  
Königsbenden 12 / 28  
52249 Eschweiler Germany

### Important Note:

Reproduction and any commercial use (of parts) of this operating manual, requires a written permission of WilTec Wildanger Technik GmbH.