

User's manual

Hose Reel Cart

62806



Illustration similar, may vary depending on model

Read and follow the operating instructions and safety information before using for the first time.

Technical changes reserved!

Illustrations, functional steps, and technical data may deviate insignificantly due to continuous further developments.

Updating the documentation

If you have suggestions for improvement or have found any irregularities, please contact us.



The information contained in this document may alter at any time without prior notice. No part of this document may be copied or otherwise duplicated without prior written consent. All rights reserved. WilTec Wildanger Technik GmbH cannot be held liable for any possible mistakes in this operating manual, nor in the diagrams and illustrations shown.

Although WilTec Wildanger Technik GmbH has made every possible effort to ensure that this operating manual is complete, accurate, and up-to-date, errors cannot be ruled out entirely.

If you have found an error or wish to suggest an improvement, we look forward to hearing from you. Send us an e-mail to:

service@wiltec.info

or use our contact form:

<https://www.wiltec.de/contacts/>

The most recent version of this manual in several languages can be found in our online shop:

<https://www.wiltec.de/docsearch>

Our postal address is:

WilTec Wildanger Technik GmbH
Königsbenden 12
52249 Eschweiler – Germany

To return your goods for exchange, repair, or other purposes, please use the following address. Attention! To allow for a trouble-free complaint or return, it is important to contact our customer service team before returning your goods.

Retourenabteilung
WilTec Wildanger Technik GmbH
Königsbenden 28
52249 Eschweiler – Germany

E-mail: **service@wiltec.info**

Tel: +49 2403 55592-0

Fax: +49 2403 55592-15



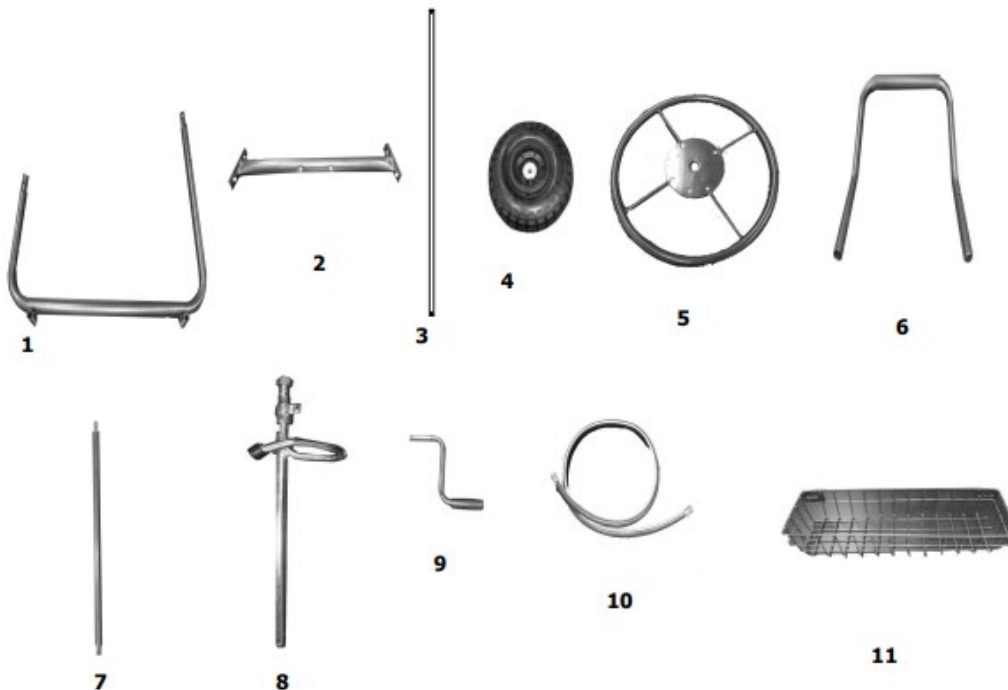
Introduction

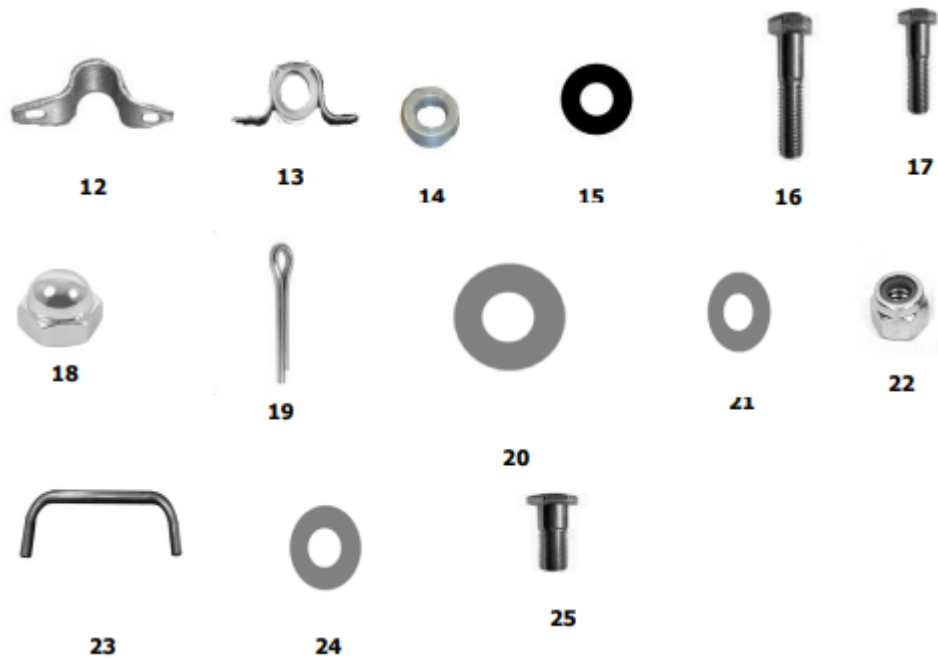
Thank you for choosing to purchase this quality product. To minimise the risk of injury, we ask you to always take some basic safety precautions when using this product. Please read this operating manual carefully and make sure that you understand it. Keep these operation instructions in a safe place.

Safety instructions

- It is advisable to observe the following safety instructions. This hose reel cart has been designed, constructed, and tested so that its operation is safe and efficient, provided that it is used exactly according to this user's manual. Any non-observance might lead to injuries.
- Always respect the instructions for a safe operation. Carefully read the user's manual and keep it at a safe place.
- Look out for holes and other dangers in the ground. Follow the maintenance and lubrication instructions, as stated in this user's manual. Always wear robust shoes. Do not wear loose clothing that could get caught in moving parts.

Parts list





Nº	Name	Nº	Name
1	Side frame	14	Crank holder
2	Cross bar	15	Hose washer
3	Axle	16	M6×35 screw
4	Wheel	17	M6×30 screw
5	Ends of hose reel	18	M8 nylock nuts
6	Sliding hoop	19	Splint
7	Connection rods	20	Large M12 washer
8	Hose coupling	21	Small M12 washer
9	Hand crank	22	M6 nylock nuts
10	Hose extension	23	Front crank frame
11	Basket	24	M8 washers
12	U-shaped holder	25	M8 U-shaped holder screw
13	Crank holder		

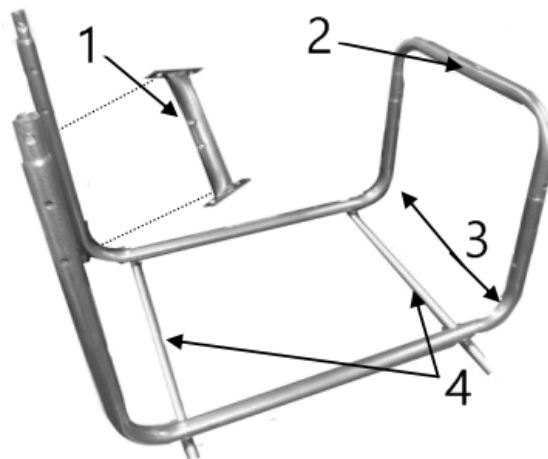
Assembly

To assemble the cart, the following tools are required:

- screwdriver
- M10 wrench or adjustable spanner

Step 1

1. Use two sets of M6×35 screws to mount the front crank frame to the side frame. Then use four sets of M6×35 screws to attach the cross bar to the side frame.
2. Slide the axles through the flaps of the underside of the side frame.



No	Name
1	Cross bar
2	Front crank frame
3	Side frame
4	Axles

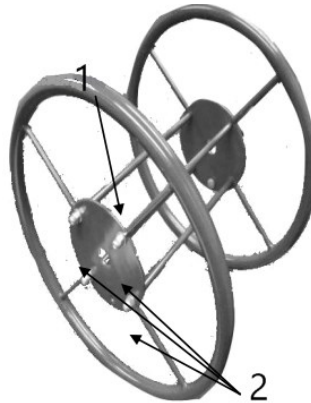
Step 2

Use a large 12 mm washer and a splint to mount the wheels.



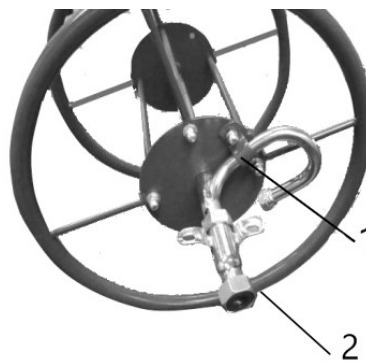
Step 3

Fix the end of the hose reel to the connection rods by using the M8 nylock nuts and corresponding washers. Repeat this on the opposite.



No	Name
1	Connection rod
2	M8 nylock nuts and washers

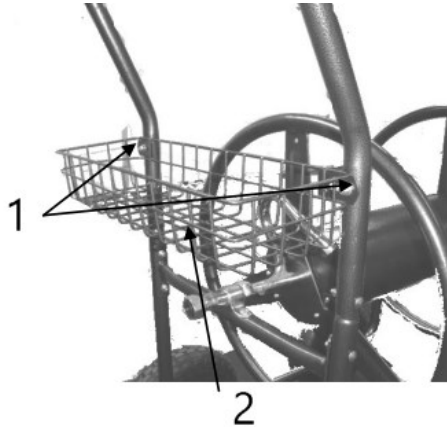
Fix the hose coupling to the middle hub by using the varnished U-shaped holder and the set of M8 screws.



No	Name
1	U-shaped holder
2	Hose coupling

Step 4

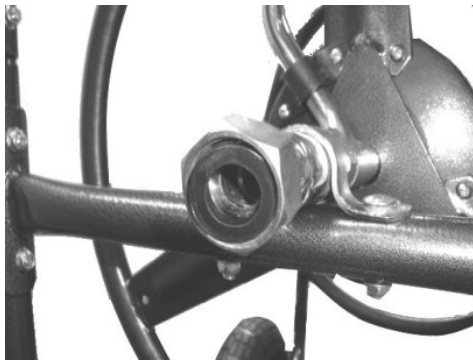
Fix the basket to the handle by using the sets of M6×35 screws.



№	Name
1	M6×35 screws
2	Basket

Step 5

Insert the washers into the hose extension and hose coupling.



Step 5



Step 6

Step 6

Fix the hose extension to the hose coupling.

Maintenance hints

- Kept clean and dry, this cart will have a longer service life.
- Regularly lubricate the wheels, at least every 6 months; in case the cart is used regularly, the wheels will require a more frequent lubrication.
- In case rust forms, slightly grind the rusty spots and spray them with varnish.

Important Note: Reproduction and any commercial use (of parts) of this operating manual, requires a written permission of WilTec Wildanger Technik GmbH.