

# Operation Manual

## Car Jack with 2 Mounting Stands 2 t

62812



Illustration similar, may vary depending on model

Read and follow the operating instructions and safety information before using for the first time.

Technical changes reserved!

Due to further developments, illustrations, functioning steps, and technical data can differ insignificantly.

Updating the documentation

If you have suggestions for improvement or have found any irregularities, please contact us.



The information contained in this document may alter at any time without previous notice. It is prohibited to copy or spread any parts of this document in any way without prior written allowance. All rights reserved.

The WilTec Wildanger Technik GmbH cannot be held accountable for any possible mistakes in this operating manual, nor in the diagrams and figures shown.

Even though, the WilTec Wildanger Technik GmbH has undergone biggest possible efforts to ensure that the operating manual is complete, faultless, and up to date, mistakes cannot be entirely avoided.

If you should find a mistake or wish to make a suggestion for improvement, we look forward to hearing from you.

Send an e-mail to:

[service@wiltec.info](mailto:service@wiltec.info)

or use our contact form:

<https://www.wiltec.de/contacts/>

The most recent version of this manual in various languages can be found in our online shop via:

<https://www.wiltec.de/docsearch>

Our postal address is:

WilTec Wildanger Technik GmbH  
Königsbenden 12  
52249 Eschweiler  
Germany

To return orders for exchange, repair, or other purposes, please use the following address. Attention! To allow for a smooth execution of your complaint or return, it is important to contact our customer service team before returning the goods.

Returns Department  
WilTec Wildanger Technik GmbH  
Königsbenden 28  
52249 Eschweiler

E-mail: **service@wiltec.info**

Tel: +49 2403 55592-0

Fax: +49 2403 55592-15

## Introduction

Thank you for purchasing this quality product. **To minimise the risk of injury we urge that our clients take some basic safety precautions when using this device. Please read the operation instructions carefully and make sure you have understood its content.**

Keep these operation instructions safe.

## Safety precautions

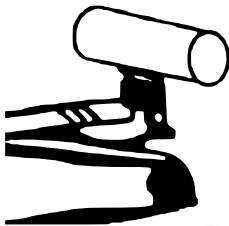
- Failure to observe these warnings can result in personal injury or vehicle damage.
- Only use the jack in combination with the stands when carrying out work or inspections on the vehicle.
- Do not overload the jack or the stands beyond their nominal capacity. Overloading can result in damage, failure and/or injury.
- The jack and stands are designed for use on hard, level surfaces. Use on other surfaces can cause instability and possible loss of load.
- Position the load in the middle of the support surfaces.



Before work or inspections can be carried out on the vehicle, the weight must be supported with the stands. Do not exceed the nominal capacity, otherwise there may be a loss of load.



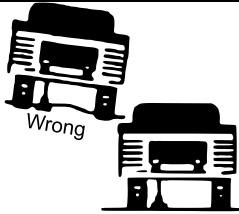
Always apply the handbrake firmly.



Always place the load in the centre of the support surface of the jack so that it rests as securely as possible.



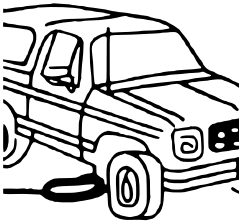
This jack may only be used as a lifting device.



This jack is only intended for use on hard, level surfaces. Its use on an uneven or unstable surface can lead to instability and possible failure of the load bearing.



Place wheel chocks in front of and behind the tyres that should not be removed during the lifting process.



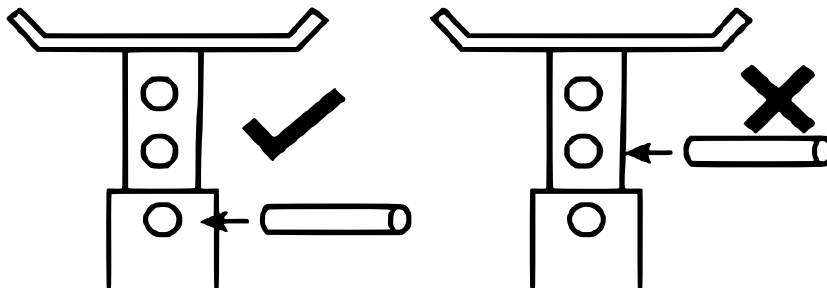
Always centre the jack under the axle or a flat and reinforced point on the vehicle frame.

**Important!** Read these instructions carefully before using the jack or jack stands. Proper use and care of the jack will enable you to use the product safely and trouble-free in the long term.

### Operating the jack stands

1. Refer to the owner's manual for your vehicle to find the correct lifting point for the jack. This point is determined by the vehicle manufacturer.
2. Place the stands under the vehicle at points specified by the vehicle manufacturer as suitable load-bearing points.
3. To adjust the stands, hold the operating lever up while you bring the rod of the support surface to the desired height. Press down on the operating lever to lock the pawl into the teeth in the centre column. Make sure that the pawl is fully engaged in the teeth.
4. Carefully lower the load onto the trestles.

**Warning!** Bring both jack stands to the same height.





## Maintenance and inspection

1. Before using the stands, a visual inspection must be carried out. Check for defective welds and missing or damaged parts. A jack appearing damaged must be taken out of service immediately.
2. **Do not use the jack stands as a permanent parking device for a vehicle. Only use them during repairs and then lower the vehicle immediately afterwards.**

## Commissioning the jack

### *Before use*

1. To prevent oil from leaking, the drain valve on top of the oil chamber is closed during shipping. The oil chamber contains the correct amount of oil before shipping. Before using the device for the first time, remove the cover plate and unscrew the vent screw so that there is a gap of around 1.5 mm. If oil leaks or the vent plug is open, the oil level must be checked before pumping.
2. With the drain valve open, pump the lifter up and down approximately 6 times to ensure complete distribution of the oil.
3. Close the drain valve – the lifter is ready for use.

### *Venting the jack system*

Air can become trapped in the hydraulic system of the jack during transportation or handling, resulting in malfunction. To vent the hydraulic system:

1. Turn the release valve on the handle no more than two full turns counter-clockwise.
2. Remove the oil filler plug.
3. Quickly pump the jack handle up and down a few times.
4. Repeat the above steps if necessary. Remember to put the oil filler plug back in at the end.

### *Lifting*

1. Use one end of the jack handle to fully close the drain valve by turning it clockwise.
2. Put the vehicle in gear or set the automatic to "Park." Also put the handbrake on.
3. Place the jack in the right place under the vehicle (see owner's manual of the vehicle). If necessary, turn the jack extension screw counter-clockwise until it rests against the vehicle.
4. Insert the jack handle into the handle socket. Pump the jack up and down by moving the handle up and down to raise the vehicle to the desired height.

### *Lowering*

1. Remove the handle and slowly open the drain valve with the small end by slowly turning it counter-clockwise.
2. Remove the jack when the vehicle is fully lowered. If the extension screw is extended, turn it clockwise until it is retracted enough to remove it from the vehicle.
3. When the jack is removed from the vehicle, close the drain valve before storage.

## General advice on caring for the jack

1. When re-filling or changing oil, always use a high-quality oil suitable for hydraulic jacks. Avoid mixing different types of oils. Do not use brake fluid, alcohol, glycerine, detergent engine oil or contaminated oil. Unsuitable fluid or incorrect oil can cause serious damage to the jack.
2. Keep the jack and external moving parts (lift arm spindle, wheel bearings, etc.) clean and well lubricated.
3. **Re-filling oil:** Make sure that the piston is fully lowered and the jack is on a level surface, and remove the cover plate and oil filler plug. When the level is more than 1 cm (½") below the opening, add oil. Then reinstall the filler plug and cover.

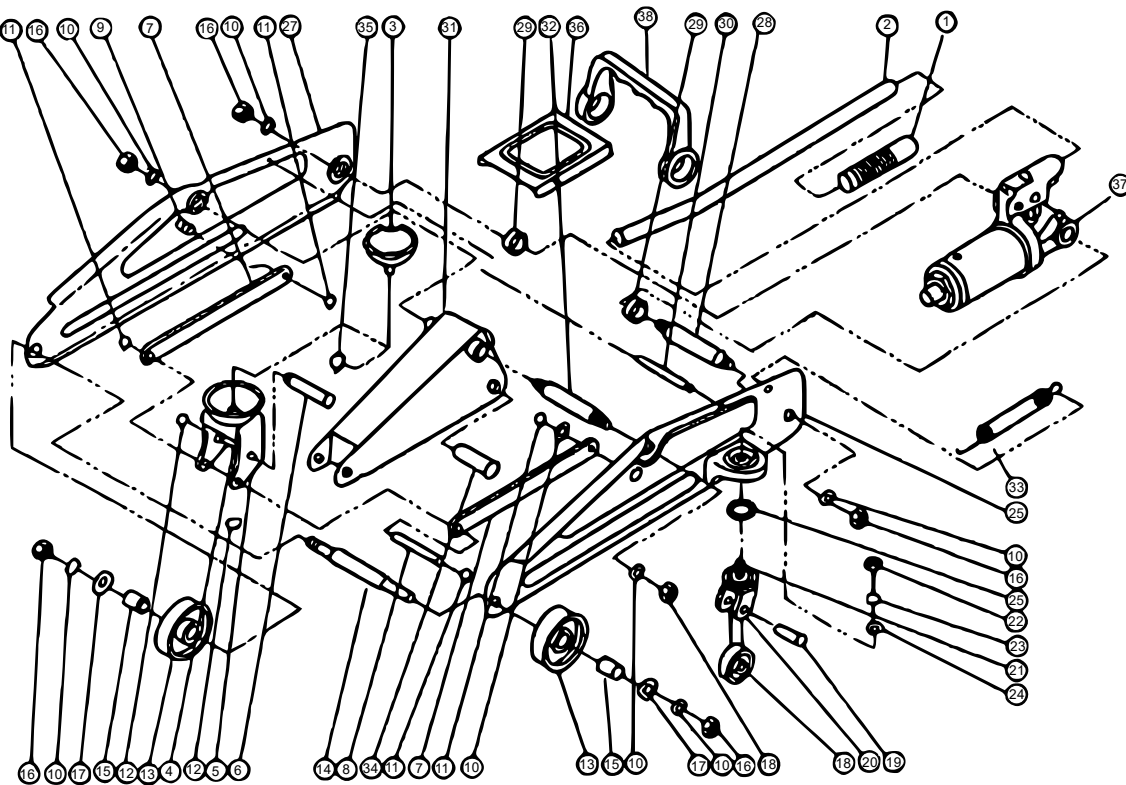


4. **Changing oil:** The oil should be changed at least once a year. To drain the oil, remove the cover plate, oil filler plug, and drain valve. Be very careful not to get any dirt or other foreign matter into the system.
5. **Lubricating:** Lubricate the mounting on the base with grease. Fill the lift arm spindle and grease nipple with oil every 3 months.
6. **Rust protection:** Clean the piston rod and the pressure cylinder with an oily cloth every 3 months or if there are signs of rust and corrosion. The support surface, lift arm and pressure cylinder must always be completely lowered when not in use.

### Troubleshooting

Problem	Cause	Solution
The jack cannot be lowered completely	1. Presence of air in the hydraulic system	1. Vent the hydraulic system.
	2. Stuck drain valve	2. Set down the load, clean the valve.
The jack cannot be lifted completely	1. Low oil level	1. Re-fill oil.
	2. Presence of air in the hydraulic system	2. Vent the hydraulic system.
Weak lifting force	1. Presence of air in the hydraulic system	1. Vent the hydraulic system.
	2. Oil polluted	2. Change oil.
	3. Drain valve not completely closed	3. Tightly close the drain valve.
Load is not lifted	1. Max. load capacity exceeded	1. Reduce the load.
	2. Drain valve open	2. Turn drain valve clockwise to tightly close it.
	3. Oil level too low	3. Re-fill oil.

**Exploded view and parts list**



Nº	Name	Qty.	Nº	Name	Qty.
1	Handle cap	1	20	Guide roll	2
2	Handle	1	21	Guide roll bracket	2
3	Support surface A	1	22	Guide roll bolt	2
4	Support surface B	1	23	Circlip	2
5	Support surface fixation	1	24	Flat washer	2
6	Bolt	1	25	Steel ball bearing	16
7	Connection	2	26	Left frame unit	1
8	Drive shaft connection	1	27	Right frame unit	1
9	Bolt connection	2	28	Anchor bolt	1
10	Spring washer	6	29	Spacer tube	2
11	Circlip	2	30	Spindle frame rail	1
12	Circlip	1	31	Lifting arm	1
13	Front wheel	2	32	Lifting arm spindle	1
14	Front wheel spindle	1	33	Return spring	1
15	Front wheel spacer	2	34	Cross-head bolt	1
16	Nut	6	35	Circlip	1
17	Flat washer	4	36	Cover plate	1
18	Guide roll	2	37	Hydraulic unit	1
19	Guide roll spindle	2	38	Carrying handle	1

**Important notice:** The reprint or reproduction, even of excerpts, and any commercial use, even in part, of this instruction manual require the written permission of WilTec Wildanger Technik GmbH.