

# Operation Manual

## Drywall Sander

62830



Illustration similar, may vary depending on model

Read and follow the operating instructions and safety information before using for the first time.

Technical changes reserved!

Due to further developments, illustrations, functioning steps, and technical data can differ insignificantly.

Updating the documentation

If you have suggestions for improvement or have found any irregularities, please contact us.



The information contained in this document may alter at any time without previous notice. It is prohibited to copy or spread any parts of this document in any way without prior written allowance. All rights reserved.

The WilTec Wildanger Technik GmbH cannot be held accountable for any possible mistakes in this operating manual, nor in the diagrams and figures shown.

Even though, the WilTec Wildanger Technik GmbH has undergone biggest possible efforts to ensure that the operating manual is complete, faultless, and up to date, mistakes cannot be entirely avoided.

If you should find a mistake or wish to make a suggestion for improvement, we look forward to hearing from you.

Send an e-mail to:

[service@wiltec.info](mailto:service@wiltec.info)

or use our contact form:

<https://www.wiltec.de/contacts/>

The most recent version of this manual in various languages can be found in our online shop via:

<https://www.wiltec.de/docsearch>

Our postal address is:

WilTec Wildanger Technik GmbH  
Königsbenden 12  
52249 Eschweiler  
Germany

To return orders for exchange, repair, or other purposes, please use the following address. Attention! To allow for a smooth execution of your complaint or return, it is important to contact our customer service team before returning the goods.

Returns Department  
WilTec Wildanger Technik GmbH  
Königsbenden 28  
52249 Eschweiler

E-mail: **service@wiltec.info**

Tel: +49 2403 55592-0

Fax: +49 2403 55592-15



## Introduction

Thank you for purchasing this quality product. **To minimise the risk of injury we urge that our clients take some basic safety precautions when using this device. Please read the operation instructions carefully and make sure you have understood its content.**

Keep these operation instructions safe.

## Safety instructions

**Attention!** Always abide by the following safety instructions when working with electric tools to reduce the risk of property damage as well as injury caused by hazards such as fire or electric shock.

- Carefully read the information and instructions contained within this operation manual to familiarise yourself with this electric tool.
- Always use safety devices and ensure to follow mandatory sequences.
- Make it a routine to check electric tools before every use with the help of check instruments and make sure to remove all check instruments
- Make it a routine to check electric tools before every use using check instruments and make sure to remove all instruments before the tool is used.
- Always keep your working area clean and well-lit. Cluttered or insufficiently lit working areas increase the risk of accident.
- The use of electric tools under unsafe conditions is strictly forbidden. Do not use electric tools in wet areas or environments with high levels of moisture. Never expose electric tools to rain or other sources of water.
- Always keep electric tools inaccessible to children.
- Make sure to take measures to keep always working areas and the electric tools within inaccessible to children and unauthorised individuals. Possible ways of doing this can for example be locking working areas or disrupting their power supply.
- To ensure the overall quality of the work and to minimise the risk of accident, ensure to only use electric tools within the boundaries of their capacity.
- Only use electric tools for their intended purposes and do not operate them while they are overstrained or damaged.
- Do not wear loose clothes or jewellery and keep long haired tied up or covered by a snood-type cap to prevent getting entangled and stuck in moving parts, which may lead to severe injuries.
- Always make sure to wear safety glasses as well as a dust mask while sanding, as a lot of dust might be produced in the working process. Glasses designed for daily use only contain shock-proof glass and do not offer the protection necessary to replace designated safety glasses.
- Work pieces should be secured with the help of bench vices or clamps. Do not under no circumstances hold work pieces in place with bare hands, as this is highly dangerous and may lead to severe injuries.
- Do not place your hands on the sanding disk of the tool and make sure to stand still during its operation.
- Always make sure that the sanding disk is tightly connected to the device and the necessary connections.
- Always hold the device with both hands while operating it. Do not operate the tool with one hand and do not under no circumstances touch the sanding disk while the tool is connected to a power supply or while the disk is still moving.
- Before starting the tool, ensure that the sanding is not obstructed and that the device does not touch any other objects or surfaces.
- The tool must be connected to a power supply and turned on before operation. Before using it at full speed, ensure that the sanding disk is not damaged or worn down, has been attached properly and therefore cannot stagger.
- Always keep the sander well-maintained and ensure that it remains in pristine condition. Make also sure to replace worn-out sanding disks with new ones.
- Always ensure that the device has been turned off properly and disconnected from its power supply before performing repairs, cleaning, or maintenance work of any kind, including the



exchange of sanding disks. Abide by the instructions concerning the replacement or lubrication of parts.

- Before connecting the device to a power supply, ensure that its on/off switch can be moved without any obstructions. Do not use the device if it cannot be turned on or off properly. Always make sure that the device has been turned off before connecting it to a power supply and only connect it to an outlet matching its specifications.
- Only attach and use the equipment in accordance with this operation manual. Always make sure to use accessories corresponding to the task at hand, since the use of unsuitable accessories can affect the efficiency of the device and even cause accidents.
- Turn the device off, disconnect it from its power source, and wait for its moving parts to stop before storing it.
- In case of spare parts being needed, make sure to only use matching parts of equal or better quality.

## Voltage

Before connecting this tool to a power outlet or extension cable, make sure that its supply voltage matches the rated voltage of the tool. In case of the supply voltage of the outlet being greater than the rated voltage of the device, turning on the device may cause damages and injuries.

Do not attempt to keep using a power outlet with insufficient voltage supply, as a voltage supply lower than the rated voltage of the device may damage the same.

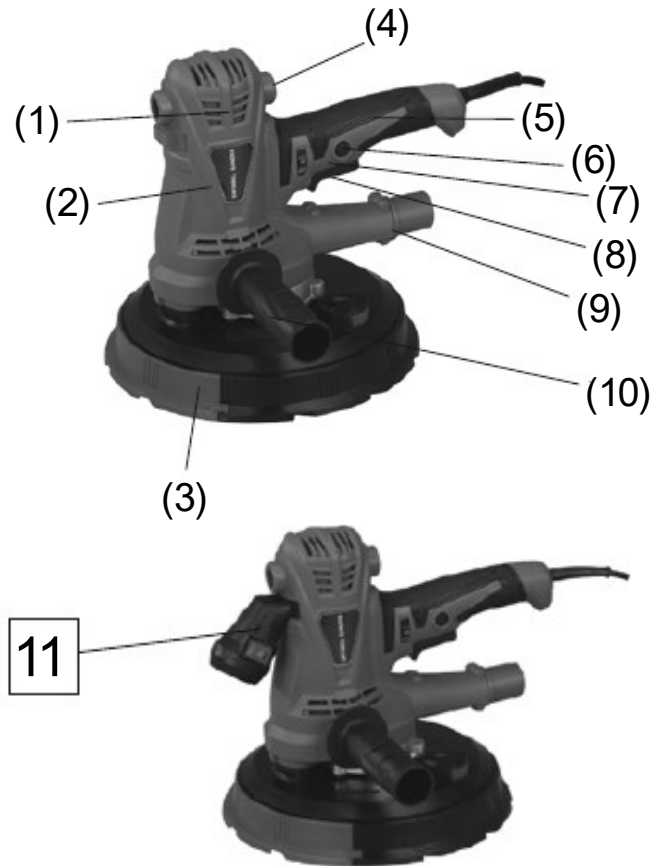
## Application

- This device is a hand-operated electric tool and mainly intended for working on chalk surfaces, such as inner walls, ceilings, and outside walls.
- Remove the lime slurry from the wall and smooth its surface to potentially increase the efficiency and quality of your work.
- This tool can easily adapt to the conditions of its work environment as it can efficiently operate at high as well as low speeds, allowing for the optimization of the sanding process while granting a user-friendly handling. This device is equipped with a suction function capable of reducing the dust loading during the process of sanding.

## Technical Specifications

<b>Rated voltage (V)</b>	230
<b>Frequency (Hz)</b>	50/60
<b>Rated power (W)</b>	1240
<b>Idle speed (<math>\%_{\min}</math>)</b>	1400–2600
<b>Disk wheel diameter (mm)</b>	215
<b>Sanding disk diameter (mm)</b>	225

### Main components



Nº	Name	Nº	Name
1	Upper cooling element	7	Speed regulator switch
2	Heavy duty engine	8	Power switch
3	Rotary disk	9	Dust bag connection
4	External carbon brush	10	Side handle
5	Handle	11	LED light
6	Speed regulator		

### Accessories



Nº	Name	Qty.	Nº	Name	Qty.
1	Dust bag	1	5	Sanding disk	6
2	Suction hose	1	6	Carbon brush	1 pair
3	Side handle	1	7	Socket head wrench	1
4	Adapter	1			

## Power switch and speed regulator

- The power switch of this drywall sander is self-locking and can be locked in its “ON” position.
- When activating the device, press its power switch to start it.
- The device can be turned off by simply pressing the power switch. It is not necessary to activate its self-locking function by pressing the self-lock button.
- The speed regulator of the device can easily be adjusted by being turned either clockwise or counter-clockwise, allowing the device to be adapted to the situation at hand and thereby increasing the work efficiency. The device is equipped with a soft start as the impulse created by the start of the motor might otherwise damage it.



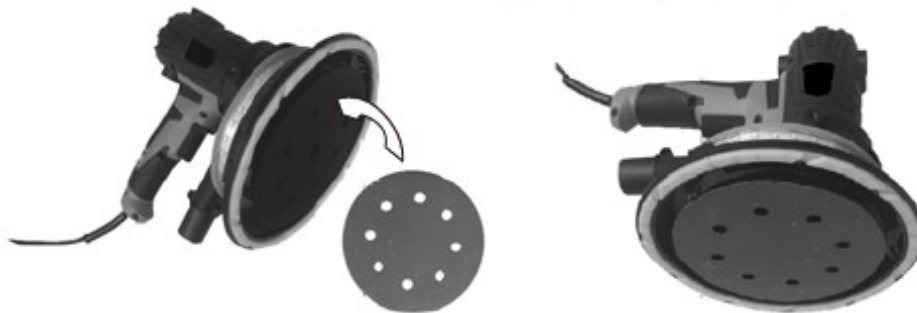
## Installing and replacing a sanding disk

**Attention!** Always ensure to not only turn the device off, but to disconnect it from its power source by properly disconnecting its power cord from the socket or extension cable before installing or removing sanding disks.

### *Installation*

Place the device upon an even surface to ensure correct installation or exchange. Attach the sanding disk to the rotary disk by placing the self-adhesive back (**Pos. 1**) of the sanding disk on the rotary disk (**Pos. 2**) as depicted below.

To maintain the efficiency of sanding, a worn sanding disk must be replaced with a new one. To remove the worn sanding disk, turn the device off and disconnect it from its power source. Once the device has been safely disconnected from any sort of power supply, carefully remove the worn sanding disk and ensure that there are no remnants stuck on the rotary disk. Make sure that the new sanding disk has been aligned in a centric manner and attach it to the rotary disk of the device.

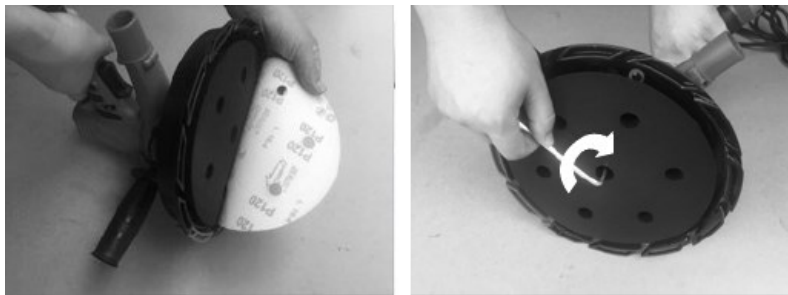


Always make sure to choose sanding disks in accordance to the size of the rotary disk of your device to prevent the same from being damaged during application. Sanding disks are being categorised

depending on the size of their graining and are suited for different surfaces. The larger the grains of a sanding disk, the easier is the removal of rough irregularities on a surface or the roughening of smooth surfaces.

### Assembly instructions

1. Remove sanding disk from the rotary disk.
2. Place the socket head wrench in the central hole of the rotary disk.
3. Turn the socket head wrench clockwise to loosen and remove the disk.
4. Attach a new disk and once again fix it in place by placing the socket head wrench in the central hole and turning it counter-clockwise.



### Edge grinding

To facilitate the process of grinding edges, simply remove the removable part of the rotary disk cover.



### Suction settings



## Exchanging carbon brushes

The device is delivered with a set of spare brushes that can be used to replace the pre-installed carbon brushes once they are worn out. The carbon brushes should always be replaced as a set.

1. Turn the device off and properly disconnect it from its power supply before beginning the exchange of the carbon brushes.
2. Open the protective cover located at the top of the device with help of a socket head wrench and remove the worn carbon brushes.
3. Insert the spare carbon brushes into the designated slots and securely close the protective cover.

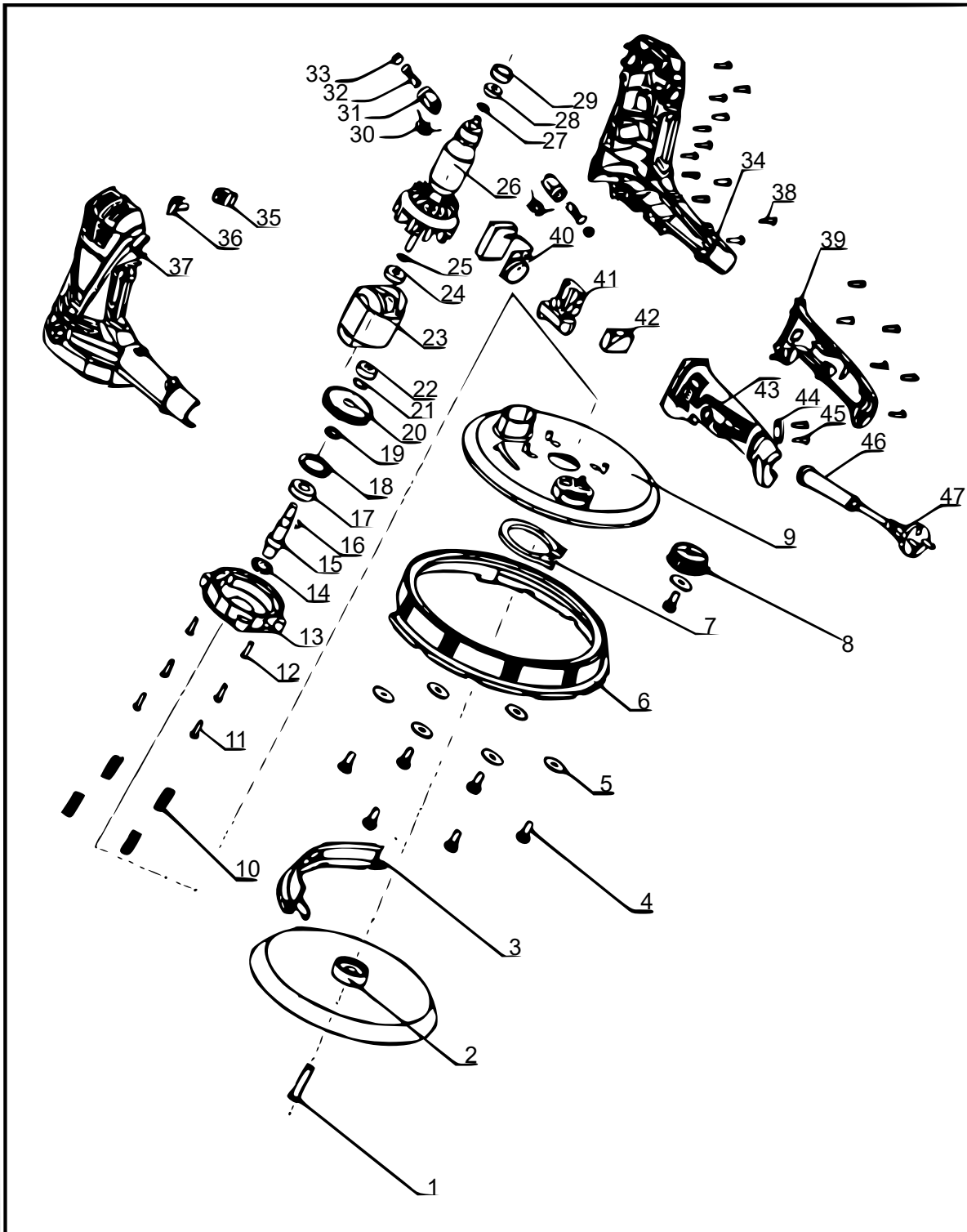


## Cleaning

- The tool must be cleaned after every use. It is thereby recommended to perform the cleaning shortly after the device has been used.
- Regular cleaning can help to prolong the working life of the device. It is recommended to clean terminal sets and components of the electric motor without the use of water.
- Use a dry piece of cloth or high-pressure to clean the device.

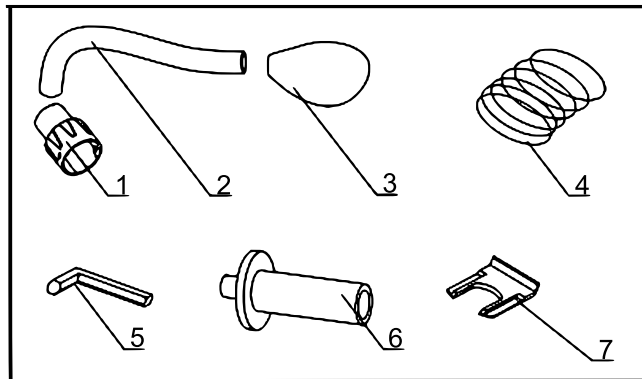


Exploded drawing and parts lists



Nº	Name	Qty.	Nº	Name	Qty.
1	Screw M5	1	25	Spacer	1
2	Rotary disk	1	26	Rotor	1
3	Rotary disk cover	1	27	Spacer	1

4	Screw (ST4.2×12)	7	28	Bearing	1
5	Spacer	7	29	Bearing bushing	1
6	Swivel plate cover	1	30	Round inductor	2
7	Spindle fuse 35	1	31	Carbon brush fixture	2
8	Air intake button (ø35)	1	32	Carbon brush	2
9	Swivel plate	1	33	Carbon brush cover	2
10	Disk spring	4	34	Right housing	1
11	Screw (ST4.2×25)	4	35	Right housing cover	1
12	Screw (ST4.2×22)	2	36	Left housing	1
13	Cover	1	37	Left housing cover	1
14	Oil seal	1	38	Screw (ST4.2×16)	18
15	Driving shaft	1	39	Right handle	1
16	Woodruff key (4×13)	1	40	Speed regulator	1
17	Bearing	1	41	Power switch	1
18	Bushing seal (ø28)	1	42	0.22 capacitor	1
19	Protective spindle sleeve	1	43	Left handle	1
20	Gearing	1	44	Cable plate	1
21	Spindle circlip (ø28)	1	45	Screw (ST4.2×14)	2
22	Bearing	1	46	Cable sheathing	1
23	Stator	1	47	Power plug	
24	Bearing	1			
<b>Accessories</b>					



No	Name	Qty.	No	Name	Qty.
1	Adapter	1	5	Inner hexagon wrench	1
2	Dust hose (2 m)	1	6	Side handle	1
3	Dust bag	1	7	Disc holder	1
4	Sand paper	6	8		

## Disposal regulations

EU guidelines regarding the disposal of scrap electric appliances (WEEE, 2012/19/EU) were implemented in the law related to electrical and electronic equipment and appliances.

All WiTec electric devices that fall under the WEEE regulations are labelled with the crossed-out wheeled waste bin logo. This logo indicates that this electric equipment must not be disposed with the domestic waste.

The company WiTec Technik GmbH has been registered in the German registry EAR under the WEEE-registration number DE45283704.

Disposal of used electrical and electronic appliances (intended for use in the countries of the European Union and other European countries with a separate collection system for these appliances).

The logo on the article or on its packaging points out that this article must not be treated as normal household waste but must be disposed to a recycling collection point for electronic and electrical waste equipment. By contributing to the correct disposal of this article you protect the environment and the health of your fellow men. Environment and health are threatened by inappropriate disposal.



Material recycling helps reduce the consumption of raw materials.

Additional information on recycling this article can be provided by your local community, municipal waste disposal facilities, or the store where you purchased the article.

Address:  
WiTec Wildanger Technik GmbH  
Königsbenden 12 / 28  
D-52249 Eschweiler

Important notice:

The reprint or reproduction, even of excerpts, and any commercial use, even in part, of this instruction manual require the written permission of WiTec Wildanger Technik GmbH.