

# Operation Manual

## Universal Caravan Mirror

62857



Illustration similar, may vary depending on model

Please read and follow the operating instructions and safety information prior to initial operation.

Technical changes reserved!

Illustrations, functional steps, and technical data may deviate insignificantly due to continuous further developments.



The information contained in this document may alter at any time without prior notice. No part of this document may be copied or otherwise duplicated without prior written consent. All rights reserved. WilTec Wildanger Technik GmbH cannot be held liable for any possible mistakes in this operating manual, nor in the diagrams and illustrations shown.

Although WilTec Wildanger Technik GmbH has made every possible effort to ensure that this operating manual is complete, accurate, and up-to-date, errors cannot be ruled out entirely.

If you have found an error or wish to suggest an improvement, we look forward to hearing from you. Send us an e-mail to:

[service@wiltec.info](mailto:service@wiltec.info)

or use our contact form:

<https://www.wiltec.de/contacts/>

The most recent version of this manual in several languages can be found in our online shop:

<https://www.wiltec.de/docsearch>

Our postal address is:

WilTec Wildanger Technik GmbH  
Königsbenden 12  
52249 Eschweiler Germany

To return your goods for exchange, repair, or other purposes, please use the following address. Attention! To allow for a trouble-free complaint or return, it is important to contact our customer service team before returning your goods.

Retourenabteilung  
WilTec Wildanger Technik GmbH  
Königsbenden 28  
52249 Eschweiler Germany

E-mail: **service@wiltec.info**  
Phone: +49 2403 55592-0  
Fax: (+49 2403 55592-15)


## Introduction

Thank you for choosing to purchase this quality product. To minimise the risk of injury, we ask you to always take some basic safety precautions when using this product. Please read this operating manual carefully and make sure that you understand it. Keep these operation instructions in a safe place.

## Safety instructions

- This mirror is not intended for commercial use.
- Only use the device according to the intended use defined in this manual.
- Obey all instructions of this manual. Any incorrect use and non-compliance with the safety instructions may lead to material damage or personal injuries.
- Keep children away and do not allow them to play with the mirror.
- Do not modify or disassemble the mirror.
- Before mounting the caravan mirror, clean the casing of the outside mirror of your vehicle.
- Before every trip and after approx. 30 km, check the mirror for its proper seat.
- With the mirror attached, it is advisable not to drive faster than 100 <sup>km</sup>/h.
- After every trip, remove the mirror.
- Please consider the width of your vehicle: the mirror will increase it. Therefore, pay particular attention to the distance between your vehicle and other road users, pedestrians, accesses, etc.
- Should your vehicle have retractable outside mirrors, make sure to remove the caravan mirror before retracting the outside mirrors of your vehicle; otherwise, both mirror and vehicle could be damaged.

## Assembly

 **Note!** The article is appropriate for both use on driver's side and passenger's side. Before mounting, the mirror needs to be adapted to the side where it will be used.



Driver's side

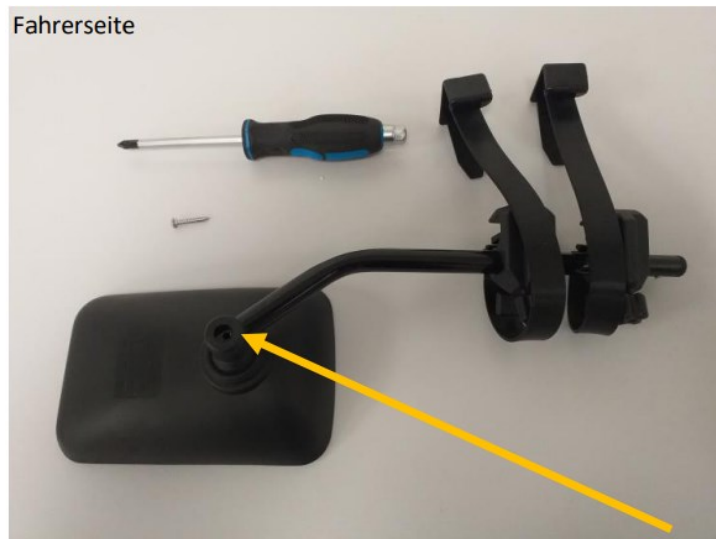


Passenger's side

## Conversion

### Step 1

Remove the screw.



### Steps 2 and 3

Turn the arm of the mirror by 180°, then re-insert the screw. Tighten it firmly.

Driver's side



**Step 4**

Turn the clamping devices by 180°, too, to adapt them to the side where the mirror will be installed.

**Fixing the caravan mirror to the outside mirror**

1. Before fixing the caravan mirror, make sure that the rubber straps are attached correctly.
2. Place the retaining flaps to the inner edge of the casing of the mirror and adapt the length to the outer part of the casing of your outer mirror.

**Maintenance and care**

Only clean the mirror with a dry and smooth cloth. Should the mirror be quite dirty, use water and a mild detergent. Do not use aggressive detergents or solvents; these products could damage the outer side of the mirror. The mirror surface can be cleaned with any standard glass cleaning agent.

**Important Note:**

Reproduction and any commercial use (of parts) of this operating manual, requires a written permission of WilTec Wildanger Technik GmbH.