

# Operation Manual

## Chainsaw Sharpener

62975



Illustration similar, may vary depending on model

Read and follow the operating instructions and safety information before using for the first time.

Technical changes reserved!

Due to further developments, illustrations, functioning steps, and technical data can differ insignificantly.

Updating the documentation

If you have suggestions for improvement or have found any irregularities, please contact us.



The information contained in this document may alter at any time without previous notice. It is prohibited to copy or spread any parts of this document in any way without prior written allowance. All rights reserved.

The WilTec Wildanger Technik GmbH cannot be held accountable for any possible mistakes in this operating manual, nor in the diagrams and figures shown.

Even though, the WilTec Wildanger Technik GmbH has undergone biggest possible efforts to ensure that the operating manual is complete, faultless, and up to date, mistakes cannot be entirely avoided.

If you should find a mistake or wish to make a suggestion for improvement, we look forward to hearing from you.

Send an e-mail to:

[service@wiltec.info](mailto:service@wiltec.info)

or use our contact form:

<https://www.wiltec.de/contacts/>

The most recent version of this manual in various languages can be found in our online shop via:

<https://www.wiltec.de/docsearch>

Our postal address is:

WilTec Wildanger Technik GmbH  
Königsbenden 12  
52249 Eschweiler  
Germany

To return orders for exchange, repair, or other purposes, please use the following address. Attention! To allow for a smooth execution of your complaint or return, it is important to contact our customer service team before returning the goods.

Returns Department  
WilTec Wildanger Technik GmbH  
Königsbenden 28  
52249 Eschweiler

E-mail: **service@wiltec.info**

Tel: +49 2403 55592-0

Fax: +49 2403 55592-15



## Introduction

Thank you for purchasing this quality product. **To minimise the risk of injury we urge that our clients take some basic safety precautions when using this device. Please read the operation instructions carefully and make sure you have understood its content.**

Keep these operation instructions safe.

## Safety instructions and precautions

Keep these instructions. They contain important safety information and precautionary measures, assembly instructions, operating and maintenance instructions, parts lists and diagrams. Keep them in a safe, dry place for future reference.

**Warning: Basic safety precautions should always be followed when using tools to reduce the risk of property damage and personal injury. Read all instructions before using this device!**

- Keep the work area clean and tidy. Untidy work areas invite injuries.
- Observe the working area conditions. Do not use machines or power tools in damp or wet rooms. Do not expose them to the rain. Make sure that your work area is well lit. Do not use electrically operated tools near flammable gases or liquids.
- Keep children away from the work area. They are not allowed to stay there under any circumstances. Do not let them work with machines, tools, or extension cords.
- Store unused devices. When not in use, tools must be stored in a dry place to prevent rust formation. Always lock tools in and keep them out of children's reach.
- Use the correct tool for the specific task for which it is intended. Do not try to use a small tool to do the work of a larger industrial tool. This tool has been designed for specific uses. It works better and safer when it is used for them. Do not structurally change this tool or use it for any purpose for which it is not intended.
- Wear protective clothing. Do not wear loose clothing or jewellery as they can get caught in moving parts. It is recommended to wear non-conductive protective clothing and non-slip shoes when working. Wear a hairnet to protect long hair.
- Use eye and ear protection. Always wear approved protective goggles and, if metal shavings are generated during work, a full protective shield.
- Do not overestimate yourself. Always make sure that you have a good stance and keep your balance. Do not reach over running machines.
- Maintain the tools carefully. Keep them sharp and clean for better and safer performance. Follow the directions for lubricating and replacing accessories. Regularly check tool cables and only have a licensed technician repair them if damaged. The handles must always be kept clean, dry and oil and grease free.
- Avoid unintentional switching on. Make sure that the switch is off when the device is not in use and before you plug the plug into the socket.
- Stay alert, and focus your full attention on what you are doing. Do not use any tools when you are tired.
- Check all parts for damage. Before using any tools, any part that appears damaged should be carefully inspected to determine whether it is working properly and as intended. Inspect the alignment and connection of any moving parts or mounting fixtures for breaks and any other condition affecting proper operation. Any damaged part must be properly repaired or replaced by a qualified technician. Do not use the tool if the device cannot be switched on and off correctly using the switch.
- Protect yourself against electric shock. Avoid body contact with earthed surfaces such as pipes, radiators, stoves, and refrigerators.
- Spare parts and accessories: Only use identical original spare parts for maintenance. The use of other parts voids the warranty. Only use accessories designed for the use of the device.
- Do not use the device if you are under the influence of alcohol, drugs, or medicine. Read the warnings on the package insert to determine if your judgment or reflexes are impaired while taking medicine. If in doubt, the tool must not be operated.



- Use the correct size and type of extension cord. If required, an extension cord must be of the correct size and type to provide the correct power to the device without its heating up. Otherwise, the extension cord could melt and catch fire or damage the device. When using the device outdoors, use an extension cord suitable for outdoor use.
- Maintenance: For your safety, maintenance should be carried out regularly by a qualified technician.
- Never use the device near flammable materials.

**Note:** The performance of this tool may vary depending on fluctuations in local voltage. The use of extension cords can also affect the performance of the tool.

**Warning:** The warnings, cautions, and instructions contained in this manual cannot cover all possible conditions and circumstances. The operator needs to know that it is essential to be careful when operating the device.

## Additional safety instructions

### *Warnings concerning grinding discs*

1. Do not use a grinding disc that pieces are broken from, that is cracked or worn. Check whether the disc has cracks not visible by hanging it by the centre hole and slightly tapping it with a non-metallic object (e.g., screwdriver handle). When in good condition, it will produce a metallic sound. A clunk indicates a crack or break.
2. Only use standard discs with a diameter of 100 mm. Other discs may burst under the load and endanger the operator and bystanders.
3. The disc diameter must not deviate more than 15 mm from the normal radius. Discs with a diameter of less than 70 mm must not be used under any circumstances.
4. The disc must rotate clockwise as indicated by the arrow on the cover.
5. Only use discs that can withstand a minimum speed of 7500 rpm or more.
6. Never use the chainsaw sharpener without the cover of the grinding disc in the intended place.
7. Always test the grinding disc by running it for one minute before putting it on the chain.
8. Stay away from the grinding disc when it is rotating and make sure that no one is standing near or in the line of the disc rotation.
9. With the grinding disc vibrating, switch off the machine immediately and check that it is securely mounted and not damaged.
10. Never try to stop the grinding disc with your hands, even if you are wearing protective gloves! The disc cuts through your gloves and can seriously injure your hand!
11. The specified speed of the replacement grinding disc must at least reach or exceed the speed of the tool.

**Warning!** This machine is designed to sharpen chainsaw chains. Do not try to sharpen other tools or other objects.

## Commissioning

### *Assembly*

- If you buy the grinding disc individually, refer to the instruction manual for replacement and maintenance of the disc.
- Use an M8 bolt that is long enough to attach the device to a workbench (see ill.). The device must be attached as shown in Fig. 1 and Fig. 6.

### *Preliminary check*

The machine must be at a standstill so that you can carry out the following checks:

1. condition of the grinding disc and its profile;
2. condition of the power cord;



3. correct attachment of the device to the workbench;
4. correct running of the grinding disc with the device switched on; if necessary, replace the grinding disc if it does not run properly.

## Starting, stopping, and using the device

### Starting

After having completed the preliminary checks and put on the additional safety equipment, do the following:

1. Connect the device to the mains;
2. press and hold down the permanent button (Fig. 1e) to adjust the chain (Fig. 6);
3. sharpen the chain.

### Stopping

After having completed all the work, do the following to switch off the device properly:

1. Make sure that the disc is in a raised position;
2. release the start button;
3. pull the plug out of the socket.

After work, the device should be stored in a dry place inaccessible to unauthorised persons.

### Using

When using the device, the following must be done or complied with:

1. Place the chain in the guide (Fig. 6).
2. Turn the chain by 30°–35° and fasten the handwheel (Fig. 7). Increasing the angle by 30°–35° increases the tooth angle, resulting in a better cut. However, this method being used, less material can be removed, as increasing the tooth angle also increases the breakability. This can increase the risk of the chain breaking.
3. Bring the chain level with the grinding disc. Use the setting key for this (Fig. 8).
4. Tighten the chain a little with the handle (Fig. 9).
5. Set the grinding depth using the screw provided (Fig. 10).
6. Sharpen the chain evenly on one side before turning it over for further sharpening, which must be done at the same angle (Fig. 11–12).
7. The position of the chain may only be changed when the device is at a standstill.
8. To avoid damaging the chain teeth, you should remove as little material as possible and keep the working time per tooth as short as possible. The maximum amount of material that can be removed per tooth differs from chain to chain and can therefore not be specified. This information is provided by the respective chain manufacturer (read the chain manufacturer's instructions).
9. Sharpen the depth stop with a flat steel file (Fig. 13).

## Safety devices

- The device has a double insulation. Only connect the device to a power system complying with the specifications on the device.
- The device is equipped with a permanent button to avoid an idle start. If this button has to be replaced, an identical one with the same properties must be used.
- Close the cover over the disc when you are not using the device. It is prohibited to use the device with an unsuitable cover.



## Maintenance

- Regular maintenance is particularly important for the device to always work perfectly and to be used as long as possible.
- Unplug the device from the socket before performing any maintenance or cleaning work.
- Do not structurally change the electrical system of the device. Never perform any maintenance work when the motor of the machine is still running. If necessary, contact a professional.
- Be careful of the grinding disc and other moving parts when performing maintenance.

Before each use of the device, the following must be checked:

- the condition of the power cord and plug,
- the sharpness and balance of the grinding disc,
- the correct fixation of the device to the workbench and the tightness of screws and bolts.

## Replacing the disc

- If worn (beyond a limit of 30 mm) or running unbalanced, the grinding disc must be replaced. Only use grinding discs with a diameter of 100 mm that can withstand high speeds even if they are blunt.
- To replace the grinding disc, proceed as follows:
  1. Pull out the plug.
  2. Use the 13 mm wrench to loosen the M8×100 bolts (see Fig. 1) so that the entire device can be removed from the workbench (see Fig. 2).
  3. Remove the safety cover (see Fig. 3).
  4. Insert the locking pin into the opening in the bottom of the device as shown in Fig. 4 to lock the spindle. Then loosen the locking pin of the cover using the 13 mm wrench (Fig. 5).
  5. Now insert the new disc and then place the upper flange on the spindle (Fig. 5). As shown in Fig. 4, the spindle must be locked with the locking pin. You can tighten the nut with the wrench.
  6. Replace the cover and tighten the M4×10 screws.
  7. After you have completed this work, the device must now be attached to the workbench again. Re-tighten the M8×100 screws that you have inserted into the connection hole. Use the supplied wrench to help.

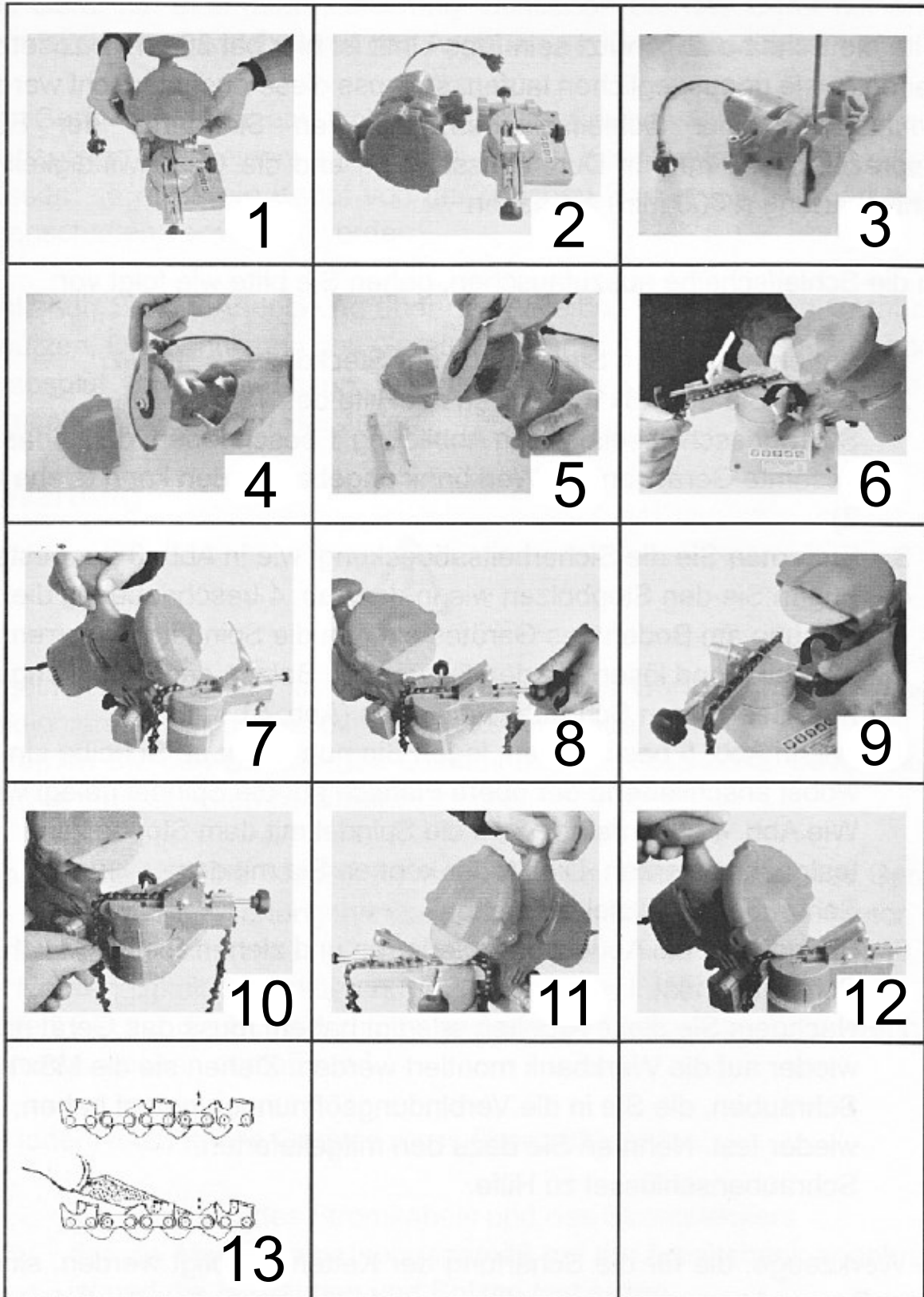


Abb./Afb./Avb./Fig.

## Disposal regulations

EU guidelines regarding the disposal of scrap electric appliances (WEEE, 2012/19/EU) were implemented in the law related to electrical and electronic equipment and appliances.

All WiITec electric devices that fall under the WEEE regulations are labelled with the crossed-out wheeled waste bin logo. This logo indicates that this electric equipment must not be disposed with the domestic waste.

The company WiITec Technik GmbH has been registered in the German registry EAR under the WEEE-registration number DE45283704.

Disposal of used electrical and electronic appliances (intended for use in the countries of the European Union and other European countries with a separate collection system for these appliances).

The logo on the article or on its packaging points out that this article must not be treated as normal household waste but must be disposed to a recycling collection point for electronic and electrical waste equipment. By contributing to the correct disposal of this article you protect the environment and the health of your fellow men. Environment and health are threatened by inappropriate disposal.



Material recycling helps reduce the consumption of raw materials.

Additional information on recycling this article can be provided by your local community, municipal waste disposal facilities, or the store where you purchased the article.

Address:  
WiITec Wildanger Technik GmbH  
Königsbenden 12 / 28  
D-52249 Eschweiler

Important notice:

The reprint or reproduction, even of excerpts, and any commercial use, even in part, of this instruction manual require the written permission of WiITec Wildanger Technik GmbH.