

Instruction Manual

LVLV Spray Gun

63014, 63015



Illustration similar, may vary depending on model

Read and follow the operating instructions and safety information before using for the first time.

Technical changes reserved!

Illustrations, functional steps, and technical data may deviate insignificantly due to continuous further developments.

Updating the documentation

If you have suggestions for improvement or have found any irregularities, please contact us.



The information contained in this document may alter at any time without prior notice. No part of this document may be copied or otherwise duplicated without prior written consent. All rights reserved. WilTec Wildanger Technik GmbH cannot be held liable for any possible mistakes in this operating manual, nor in the diagrams and illustrations shown.

Although WilTec Wildanger Technik GmbH has made every possible effort to ensure that this operating manual is complete, accurate, and up-to-date, errors cannot be ruled out entirely.

If you have found an error or wish to suggest an improvement, we look forward to hearing from you. Send us an e-mail to:

service@wiltec.info

or use our contact form:

<https://www.wiltec.de/contacts/>

The most recent version of this manual in several languages can be found in our online shop:

<https://www.wiltec.de/docsearch>

Our postal address is:

WilTec Wildanger Technik GmbH
Königsbenden 12
52249 Eschweiler Germany

To return your goods for exchange, repair, or other purposes, please use the following address. Attention! To allow for a trouble-free complaint or return, it is important to contact our customer service team before returning your goods.

Retourenabteilung
WilTec Wildanger Technik GmbH
Königsbenden 28
52249 Eschweiler Germany

E-mail: **service@wiltec.info**
Phone: +49 2403 55592-0
Fax: (+49 2403 55592-15)



Introduction

Thank you for choosing to purchase this quality product. To minimise the risk of injury, we ask you to always take some basic safety precautions when using this product. Please read this operating manual carefully and make sure that you understand it.

Keep these operation instructions in a safe place.

Safety instructions

- Do not fail to familiarise yourself with the safety regulations before commissioning. Read them thoroughly and obey all safety regulations and instructions to avoid any material damage or personal injury.
- Only use the device according to the intended use defined in this manual. Every incorrect use might lead to injuries and/or damages.
- This device may only be used by persons with reduced physical, sensory, or mental abilities or a lack of experience or knowledge in case a person familiar with the device and responsible for their safety has instructed and supervises them.
- Children must not use the device and should be supervised when they are near it to ensure that they do not play with it.
- Under no circumstances should you direct the device towards your body or other persons' bodies or animals.
- The maximum capacity must not be exceeded.
- Before every use, check all connections and hoses. Ensure that they are correctly connected and are in a perfect condition.
- Should the device or one of the hoses connected be damaged, it must not be used any longer.
- **Risk of injuries!**
- Only use the device in well-ventilated rooms.
- During use, wear appropriate safety equipment (protective goggles, protective gloves, breathing protection).
- Do not use the device near possible sources of ignition (e.g., cigarettes, open flames, etc.). Paints, thinners, and solvents are highly flammable and must therefore be handled with care. Obey the warnings and safety instructions given by the manufacturer of the paint, thinner, or dissolvent.
- Clean the device after every use.
- Only have repairs made by qualified persons.

Start

1. Tighten the liquid nozzle with a wrench.
2. Tighten the air cap and paint cup.
3. Check all airlines and connections to make sure that they are clean and undamaged before connecting them to the gun.
4. Thoroughly rinse the gun with a cleaning agent.

Adjusting the nozzles

Use the nozzle setting on the left side of the gun to realise the desired pattern.

Adjusting the liquid

Use the liquid regulator to define the desired flow rate.



Adjusting the air pressure

Exact regulation of the intake pressure of your spray gun. Use of a pressure regulator installed to the spray gun.

1. Open the air set valve of the gun.
2. Set the air intake regulator to the defined intake pressure with the gun trigger halfway pressed down (air only); thus, you receive the desired air cap pressure.
3. To test the gun, spray paint on a piece of cardboard, etc. to check the correct spraying rate and the desired sprayability.
4. Fine setting with the air set valve of the gun.

Cleaning and maintaining

Replacing the air cap, liquid nozzle, and needle

To ensure a perfect shape and efficiency, these parts should always be replaced as a whole.

Replacing the needle gasket

The needle is equipped with a PTFE gasket; to replace it, the liquid needle, the liquid nozzle, and the grommet nut must be removed.

Cleaning and maintaining the spray gun

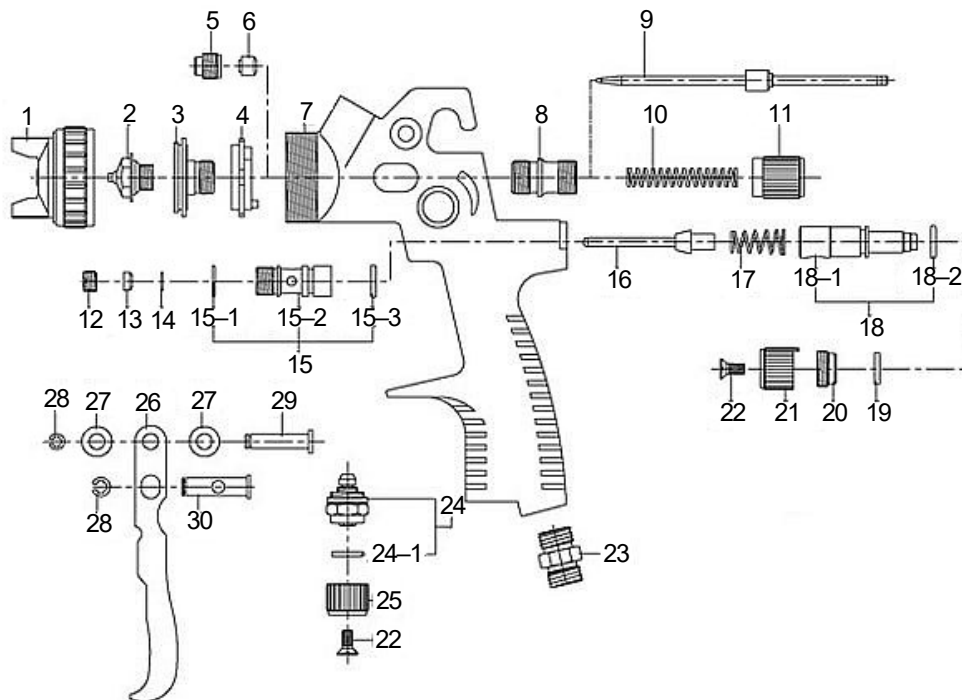
1. After use, immediately rinse it with dissolver to remove all deposits.
2. Clean the air cap with a brush.
3. Lubrify all moving parts with a small quantity of petroleum-based lubricifier.

Attention! Never use inappropriate cleaning agents, who might cause damages to the gun and impair its efficiency. Never immerse the the gun into dissolvents.

Troubleshooting

Problem	Possible cause	Proposed solution
Leakage of the liquid nozzle of the gun	Liquid nozzle loose; foreign bodies or dried paint obstruct the nozzle	Tighten or remove and clean nozzle.
Leakage of the needle gasket of the gun	PTFE gasket damaged or missing	Replace PTFE gasket.
Gun spray jet oriented to the left or right and crescent-shaped	Air holes of the air cap obstructed or air cap damaged	Clean air holes or replace air cap.
Drop-shaped or oval pattern	Air cap obstructed at the liquid needle opening	Remove and clean air cap and liquid nozzle
Paint sputters out of the gun	<ol style="list-style-type: none"> 1. Too little material left in the cup 2. Material unfiltered 3. Liquid nozzle loose 4. PTFE gasket damaged 5. Needle and nozzle dirty 	<ol style="list-style-type: none"> 1. Top up with paint. 2. Filter the material. 3. Tighten loose parts. 4. Replace PTFE gasket. 5. Clean needle and nozzle.
Bad spray pattern	<ol style="list-style-type: none"> 1. Intake pressure too low, material too thick 2. Pressure too high or material too thin 	Set air pressure and/or viscosity of the material.

Exploded view and parts list



Nº	Name	Nº	Name
1	Air cap	15-3	O-ring
2	Liquid nozzle	16	Air piston (complete)
3	Brass ring	17	Air piston spring
4	Air distribution ring	18	Air piston spring
5	Needle gasket holder	19	Gasket
6	Needle gasket	20	Retainer nut
7	Body	21	Air setting knob
8	Liquid control	22	Screw
9	Paint needle	23	Air intake port
10	Spring, needle	24	Nozzle adjustment
11	Turning knob of liquid regulator	24-1	Gasket
12	Air piston socket	25	Turning knob of nozzle adjustment
13	Air piston pack	26	Trigger
14	Gasket	27	Gasket
15	Air valve fit assembly	28	E-ring
15-1	O-ring	29	Pin, upper trigger
15-2	Air valve fit	30	Pin, lower trigger

Important Note:

Reproduction and any commercial use (of parts) of this operating manual, requires a written permission of WilTec Wildanger Technik GmbH.