

Operating Manual

Bike Cargo Trailer

63115

toboli



Illustration similar, may vary depending on model

Please read and follow the operating instructions and safety information prior to initial operation.

Technical changes reserved!

Illustrations, functional steps, and technical data may deviate insignificantly due to continuous further developments.



The information contained in this document may alter at any time without prior notice. No part of this document may be copied or otherwise duplicated without prior written consent. All rights reserved. WilTec Wildanger Technik GmbH cannot be held liable for any possible mistakes in this operating manual, nor in the diagrams and illustrations shown.

Although WilTec Wildanger Technik GmbH has made every possible effort to ensure that this operating manual is complete, accurate, and up-to-date, errors cannot be ruled out entirely.

If you have found an error or wish to suggest an improvement, we look forward to hearing from you. Send us an e-mail to:

service@wiltec.info

or use our contact form:

<https://www.wiltec.de/contacts/>

The most recent version of this manual in several languages can be found in our online shop:

<https://www.wiltec.de/docsearch>

Our postal address is:

WilTec Wildanger Technik GmbH
Königsbenden 12
52249 Eschweiler – Germany

To return your goods for exchange, repair, or other purposes, please use the following address. Attention! To allow for a trouble-free complaint or return, it is important to contact our customer service team before returning your goods.

Retourenabteilung
WilTec Wildanger Technik GmbH
Königsbenden 28
52249 Eschweiler – Germany

E-mail: **service@wiltec.info**

Tel: +49 2403 55592-0

Fax: +49 2403 55592-15

Introduction

Thank you for choosing to purchase this quality product. To minimise the risk of injury, we ask you to always take some basic safety precautions when using this product. Please read this operating manual carefully and make sure that you understand it.

Keep these operation instructions in a safe place.

Safety instructions

- The trailer is not suitable for children younger than 3 years. **Danger of suffocation due to small pieces!**
- The maximum charge capacity of 50 kg must not be exceeded.
- The assembly of the product must be realised by an adult.
- The person pulling the trailer must be at least 16 years old.
- The person pulling the trailer should be fit enough to do so.
- Only use DIN-approved bicycles as pulling bicycles.
- **Note!** Please note that the driving characteristics of the bicycle change with a trailer attached.
- **Note!** Please note that the braking distance becomes longer with a trailer attached.
- Make sure that the weight is distributed regularly.
- No additional charges can be attached to the trailer or drawbar.
- Do not modify and/or remodel the coupling in any way.
- If possible, fix a rearview mirror to the bicycle that the trailer is attached to.
- Check the tightness of all screws and nuts before each tour.

Assembly

Remove all packing materials and check the parts for completeness and integrity. Make sure that all components are in perfect condition.

Tools required for assembly

- Spanner in 2 sizes (not included in the scope of delivery)
- Turnscrew (not included in the scope of delivery)

Installing the tyres

Screw the tyres to the trailer, making sure that the connection is tight.



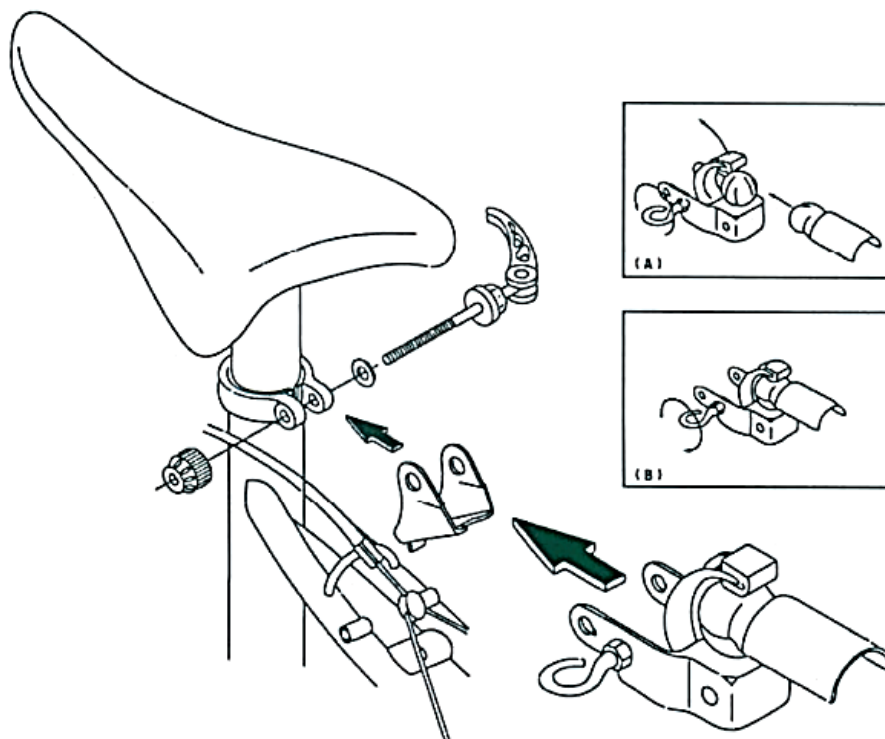
Installing the drawbar

- Attach the drawbar to the frame.
- Bring them into the correct position by fixing the screws, nuts, and reinforcement rings.
- Make sure that all screws are tightened.



Installing the trailer coupling

- Un-tighten and remove the screw of the saddle support.
- Place the angled piece to the saddle support and slide the support of the coupling onto it (see figure).
- Now attach all parts by setting the saddle-support screw in again and by re-tightening it.



- By un-tightening the screw (**Fig. A**), the lever of the coupling support can be released and slightly pressed backwards.
- You can now remove or install the coupling.
- Blocking the screw (**Fig. B**) secures the lever of the coupling support.

Installing the transport box

Open the box and place it into the trailer as shown.



Checking and maintaining the trailer

- Safety check before each tour!
- Functional check before each tour!

All components should be cleaned with a damp cloth from time to time and dried with a dry one afterwards.

Regularly check all screws, rivets, and nuts. Do not use the trailer when parts are damaged or worn. Replace damaged or worn components before using the trailer again.

Technical specifications

Admissible load weight (kg)	50
Empty weight (kg)	approx. 8
Dimensions (mm)	1450 × 575 × 730
Max. speed (kph)	16
Size of tyres (mm)	approx. 400 (16")
Pressure of tyres (bar)	2.00

Important note:

Reproduction and any commercial use (of parts) of this operating manual, requires a written permission of WilTec Wildanger Technik GmbH.