

# Operation Manual

## Electric Planing Machine

63123



Illustration similar, may vary depending on model

Read and follow the operating instructions and safety information before using for the first time.

Technical changes reserved!

Due to further developments, illustrations, functioning steps, and technical data can differ insignificantly.

Updating the documentation

If you have suggestions for improvement or have found any irregularities, please contact us.



The information contained in this document may alter at any time without previous notice. It is prohibited to copy or spread any parts of this document in any way without prior written allowance. All rights reserved.

The WilTec Wildanger Technik GmbH cannot be held accountable for any possible mistakes in this operating manual, nor in the diagrams and figures shown.

Even though, the WilTec Wildanger Technik GmbH has undergone biggest possible efforts to ensure that the operating manual is complete, faultless, and up to date, mistakes cannot be entirely avoided.

If you should find a mistake or wish to make a suggestion for improvement, we look forward to hearing from you.

Send an e-mail to:

[service@wiltec.info](mailto:service@wiltec.info)

or use our contact form:

<https://www.wiltec.de/contacts/>

The most recent version of this manual in various languages can be found in our online shop via:

<https://www.wiltec.de/docsearch>

Our postal address is:

WilTec Wildanger Technik GmbH  
Königsbenden 12  
52249 Eschweiler  
Germany

To return orders for exchange, repair, or other purposes, please use the following address. Attention! To allow for a smooth execution of your complaint or return, it is important to contact our customer service team before returning the goods.

Returns Department  
WilTec Wildanger Technik GmbH  
Königsbenden 28  
52249 Eschweiler

E-mail: **service@wiltec.info**

Tel: +49 2403 55592-0

Fax: +49 2403 55592-15




## Introduction

Thank you for purchasing this quality product. **To minimise the risk of injury we urge that our clients take some basic safety precautions when using this device. Please read the operation instructions carefully and make sure you have understood its content.**

Keep these operation instructions safe.

## General safety instructions for the operation of electrical devices

 **Warning!** Read all safety warnings and instructions. Failure to follow warnings and instructions could result in electric shock, fire, and/or serious injury. Keep the instructions in a safe place so that you can refer to them at any time.

**This manual defines an electrical device as a cable-operated electrical device or battery-operated (cordless) electrical device.**

### *Work area safety*

- Keep your work area clean and ensure good lighting. Untidy and dark areas increase the risk of accidents.
- Do not use an electrical device in a potentially explosive environment, e.g., near flammable liquids, gases, or dusts. Electrical devices can generate sparks, which can then ignite dust or vapours.
- Keep children and bystanders at a distance when operating an electrical device. Distractions can cause loss of control of the device.

### *Electrical safety*

- The plug on an electrical device must match the outlet. Do not modify the plug in any way. Do not connect earthed electrical devices to the power supply using an adapter plug. Unmodified plugs and the correct outlet reduce the risk of electric shock.
- Avoid touching an earthed surface with your body, e.g., pipes, radiators, stoves, or refrigerators. The risk of electric shock increases when your body is earthed.
- Do not expose the electrical device to rain or a damp environment. If water gets into an electrical device, it increases the risk of electric shock.
- Do not misuse the cable. Never carry or pull the device by the cable and do not pull the plug out of the socket by the cable. Keep cables away from heat sources, oil, sharp edges, or moving parts. Damaged or tangled cables increase the risk of electric shock.
- If you want to operate an electrical device outdoors, use a cable approved for outdoor use, the use of which will reduce the risk of electric shock.
- If the operation of an electrical device in a damp environment is unavoidable, use a residual current circuit breaker, the use of which reduces the risk of electric shock.

### *Personal safety*

- Remain alert, pay full attention to what you are doing and use electrical equipment with common sense. Do not operate an electrical device when you are tired or under the influence of alcohol, drugs, or medicine. A moment of inattention while operating an electrical device can result in serious injury.
- Put on personal protective equipment. Always wear eye protection. Protective equipment such as dust masks, non-slip shoes, helmets, or hearing protection reduce the risk of injury depending on the working conditions.
- Prevent unintentional start-up of the device. Make sure that the switch is in the off position before plugging in, picking up, or carrying the device. Wearing an electrical device with your finger on the trigger, or plugging in an electrical device when the switch is in the on position, increases the likelihood of an accident.



- Remove setting tools before starting up an electrical device. A key left on a rotating part of the device could cause injury.
- Do not lean too far. Make sure to have a secure stance and always keep your balance. This gives you better control of the device in an unexpected situation.
- Dress appropriately. Do not wear loose clothing or jewellery. Keep your hair, parts of clothing and gloves away from moving parts. Loose clothing, jewellery or long hair can be caught in these parts.
- If the device has a dust extraction and collection device, ensure that it is properly connected and used. Use of such a device can reduce dust-related hazards.

#### *Safety of use and care*

- Do not apply excessive force to the device. Use the appropriate device for the task to do. The right device works better and more safely when used in the performance range that it has been made for.
- Do not use an electrical device if it cannot be switched on and off using the switch. A device that cannot be switched on and off at the switch is dangerous and must be repaired.
- Pull the power plug or disconnect the device from the battery before making settings, replacing attachments, or storing the device. These precautions reduce the risk of the device starting up unintentionally.
- Store unused electrical devices out of children's reach and do not allow anyone not familiar with it to use it. Electrical devices in the hands of inexperienced users can be dangerous.
- Check your electrical devices regularly. Find moving parts that are improperly seated or jammed, broken parts, and any other condition that could affect the proper operation of the device. A damaged electrical device must be repaired before further use. Many accidents occur due to poorly maintained devices.
- Keep cutting tools sharp and clean. Properly maintained knives with sharp cutting edges do not get stuck so easily and are easier to control.
- Always use the electrical device, its attachments, and other related parts in accordance with these instructions and consider the working conditions and the work to be carried out. Using an electrical device for work for which it is not intended can be dangerous.

#### *Maintenance*


Have the electrical device serviced by a specialist. Only identical spare parts may be used for repairs. This maintains the operational safety of the device.

#### **Special safety instructions for the operation of the electric planing machine**

- Always wait until the device has come to a complete standstill before you put it down. An exposed knife can drill into its support surface and lead to it being no longer controllable and causing serious injuries.
- Hold the device by the insulated gripping surfaces when performing work during which the planer knives could hit a hidden electrical line or the electrical cable of the device. If the planer knives cut into a live wire, the exposed metal parts of the device are also energised and could give the user an electric shock.
- Secure the workpiece to a solid surface with the help of clamps or in some other way. If you hold the workpiece with your hand or pressed against your body, it will begin to wobble, leading to a loss of control.
- Always wear eye and ear protection and put on a dust mask.
- Always completely unwind a cable from the cable drum so that it does not heat.
- If you need an extension cord, make sure that it has the correct current range for the electrical device and that it is electrically safe.
- Long continuous use of an electrical device can make metal parts and attachments very hot.
- Always switch off the planing machine before putting it down.
- Do not use excessive force on the planing machine. Let it do the work at the speed that it is designed for. If the machine is overused by putting too much pressure on it, the motor will slow down, the planing will become inefficient, and the device could even be damaged.

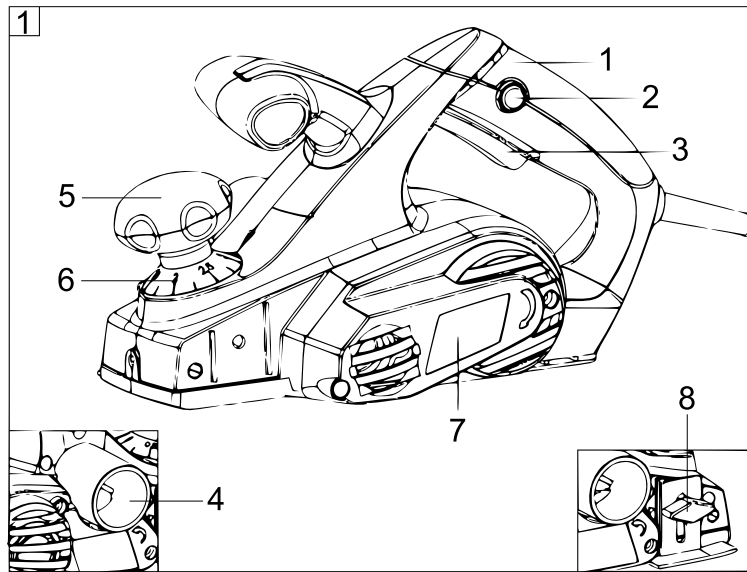


- Always use a dust extractor whenever possible.
- Cloths, rags, ropes, cords, and the like must not lie around in the work area.
- Remove all nails, screws, etc. from the workpiece. The knives and the entire device can be damaged if the device is run over a nail or other foreign object. This can also affect security.
- Handle planer knives very carefully.
- Make sure that the fastening screws on the planer knives are tight before you start using the device.
- Hold the device securely with both hands.
- Before you bring the device to a workpiece, switch it on and let it run for a moment. See if the device is vibrating or jiggling abnormally, which could indicate that the planer knives are improperly attached or misaligned.
- Do not start planing until the planer knives have reached their highest speed.
- Maintain a minimum distance of 200 mm between the device and your face and body during operation.
- Switch off the device before making any adjustments and wait until the planer knives have completely stopped.
- Never insert your finger into the cutting gap. Chips could get stuck in it when you work on damp wood. Remove chips from the gap with a swab, but only after you have switched off the device and pulled the plug.
- Do not leave a running machine unattended. Only operate it if it is held with both hands.
- If you leave the planing machine, first turn it off and place the front plate on a block of wood so that the planer knives do not touch any objects.
- Always replace both planer knives at the same time, otherwise there will be an imbalance between the old and the new knife, which will cause vibrations. This shortens the life of the planer knives and the device itself.

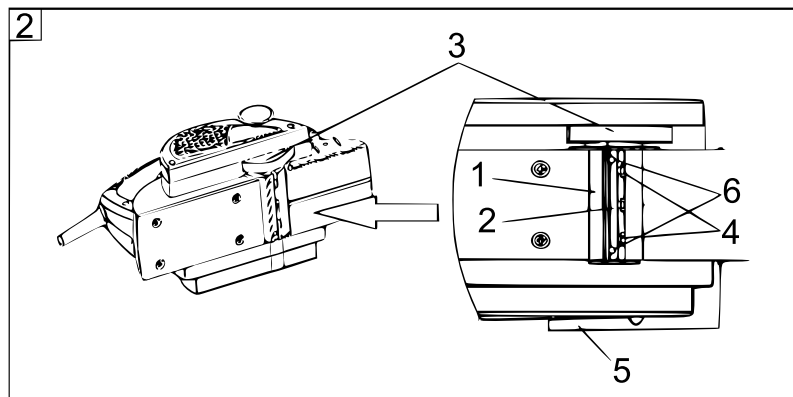
 **WARNING!** Before connecting an electrical device to the power supply (via a wall socket, etc.), ensure that the voltage of the source corresponds to the voltage indicated on the nameplate of the device. If the power source has a higher voltage than that stated on the rating plate, the user could be seriously injured and the device could be seriously damaged. If in doubt, do not plug in the plug. If the power source has a voltage lower than that indicated on the nameplate, the motor will be damaged.

- The device may only be used for its stated purposes. Any other use is incorrect. In this case, it is not the manufacturer but the user who accepts all responsibility for damage and injuries.
- To be able to use the device properly, you must observe the safety regulations, the assembly instructions, and the operating instructions that you will find in these operating instructions. Everyone operating or maintaining this device must be familiar with the operating instructions and be aware of the possible dangers. Children and frail people are not allowed to operate the device. Children must always be supervised when near the area in which the device is being operated. You must also adhere to the accident prevention regulations that apply to the work area. The same applies to general rules on health and safety at work.
- The manufacturer cannot be held responsible if damage or injuries are caused by structurally modified devices.
- Even if the device is operated in accordance with all instructions and regulations, certain residual dangers cannot be avoided. The structure and design of the device can result in the following dangers:
  - hearing damage if you do not wear hearing protection;
  - dangers arising if the plug is not pulled out before adjustments or maintenance, including replacing the planer knives and adjusting the planing depth;
  - cuts from touching the planer knives;
  - cuts caused by reaching under the base of the machine when it is in operation and touching the planer knives;
  - injuries from kickback of the workpiece and its parts;
  - injuries from parts of the planer knives being thrown around;
  - injuries that occur when the device is used outdoors in the rain or in a damp environment (after the rain) or near highly flammable liquids or gases;
  - injuries that occur when the work area is not properly lit.

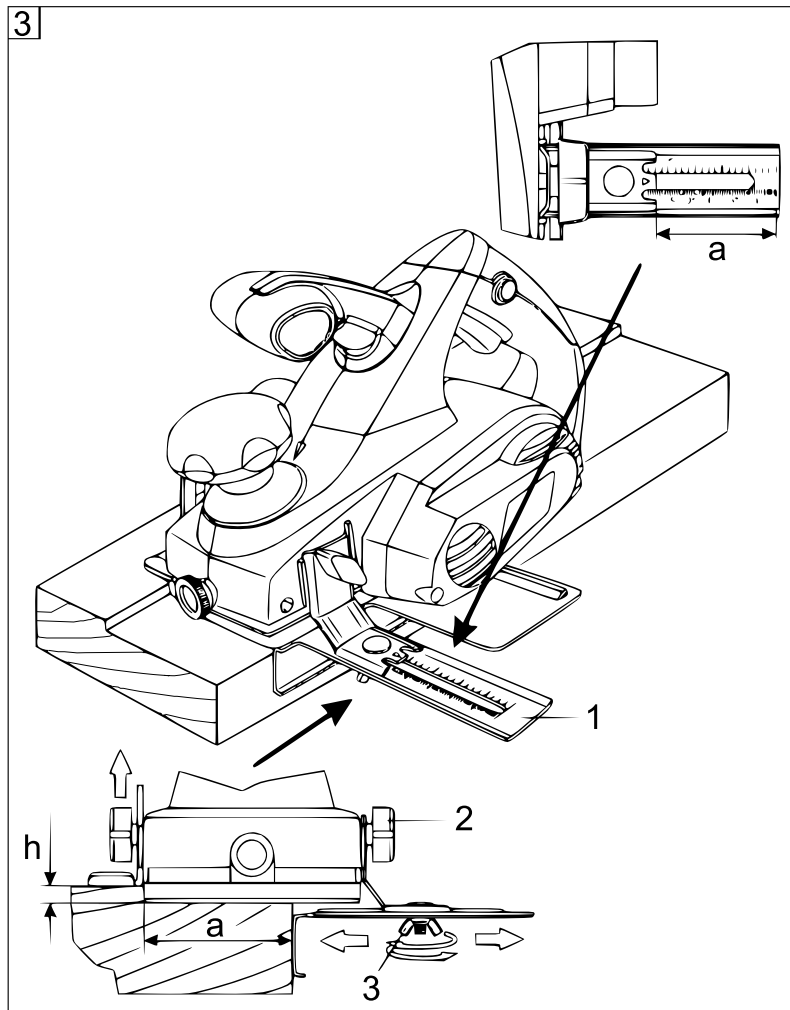
**Main components**



No	Name	No	Name
1	Rear handle	5	Depth adjustment knob
2	Lock-off button	6	Adjustment wheel
3	On/off switch trigger	7	Belt cover
4	Dust extraction tube	8	Rebate adjustment knob



No	Name	No	Name
1	Knife drive shaft	4	Screw
2	Tension unit	5	Housing
3	Knife drive cover	6	Adjusting screw



Nº	Name	Nº	Name
1	Parallel stop guide	3	Wing nut
2	Parallel stop attachment knob		

### Mounting and setting

**⚠ Risk of injury!** Before each setting,

- switch off the device!
- wait until the device has come to a standstill!
- pull out plug!

#### *Installation and removal of the planer knives (Fig. 2)*

As soon as one of the edges of a planing knife is blunt, turn the planing knife over or replace the planing knives if they are too worn (only in pairs).

1. Loosen the screws **(4)**.
2. Press the knife guard **(3)** from above and pull the tension unit with the planer knives out to the side.
3. Pull the planer knife out of the tension unit.
4. Clean the tension unit **(2)** and knife shaft **(1)**.
5. Push the new planer knife all the way into the tension unit from the side, making sure that the cam on the tension unit fits into the notch on the planer knife.



6. Push the tension unit with the new planer knife back onto the knife shaft so that the edge of the planer knife and the edge of the housing **(5)** are level.
7. Press the tension unit against the knife shaft and secure it again by tightening the screws **(4)**.
8. Turn the knife shaft by 180° and replace the second planer knife as described.

**Notes:**

- Do not adjust the adjusting screws **(6)**. The tension unit is set in the factory.
- Make sure that the planer knives do not rub against the housing.
- Always exchange both planer knives and both tension units at the same time.

*Setting the planing depth (Fig. 1)*

1. Turn the depth adjustment knob **(5)** to set the planing depth.
2. One turn of the adjustment wheel **(6)** corresponds to a change in the planing depth of 2 mm. One line on the scale corresponds to a planing depth of 0.25 mm.

*Chamfering and rebating*

1. To set the rebating depth, set the desired value on the rebate adjustment knob **(8)**.
2. The V-shaped notch on the front allows the edges of the workpiece to be chamfered quickly and easily. Depending on the required chamfering width, place the plane with the corresponding V-notch on the edge of the workpiece and guide it along the edge.

*Parallel stop (Fig. 3)*

**Warning:** Always make sure that the device is switched off and the plug is unplugged before making adjustments or installing/removing blades.

1. To set the parallel stop **(1)**, remove the parallel stop adjustment knob **(2)** and slide the stop onto the plane.
2. Replace the button **(2)** and tighten it.
3. Loosen the wing nut **(3)** that holds the stop in place, adjust the stop to the desired rebating width and re-tighten the wing nut.
4. If you need a very precise rebating width, first plan a leftover piece, measure the rebating distance, and adjust the setting if necessary.

**Operation***Switching on and off (Fig. 1)*

- Before operating the on/off switch, check whether the planer knives are properly seated, can move freely, and the knife clamping screw is tightened.
- Plug in the power plug. To switch on the planer, press the lock-off button **(2)** and press the on/off switch **(3)**.



**Note:** Observe the safety instructions before using the planer. Set a suitable planing depth, planing speed, and surface finish. For coarse planing, the planing depth can be increased; for fine planing, the planing depth should be reduced, and the planer moved more slowly over the workpiece.

*Planing*

1. Place the device with the front plate flat on the surface of the workpiece. The planer knives must not touch them yet.
2. Switch on the device and wait until the planer knives have reached their highest speed.
3. Carefully move the device forward and apply a certain pressure on it.
4. Move the device over the edge of the workpiece. However, it must not be tilted downwards.





5. The planing speed and the planing depth determine the finish of the workpiece surface. If it is to be roughly planed, the planing depth can be increased; for fine planing, the planing depth must be reduced, and the tool must be moved more slowly.



**Note:** Planing is easier if you tilt the workpiece forward a little so that you can plane downwards.



**Warning!**

- Moving the machine too fast will give a poor result and damage the planer knives or the motor. Moving the device too slowly can burn or mar the surface.
- The correct planing speed depends on the material of the piece being planed and the planing depth. First, practice on scraps so that you can develop a feeling for the right speed and the right depth.
- Fasten the workpiece to the workbench with clamps.

## Maintenance

### *Replacing the drive belt*

- Removing the old belt:
  - Remove the protective cover of the drive belt by loosening the fastening screw.
  - Slowly turn the drive belt roller forwards with one hand (wear gloves!) and pull the drive belt out with the other hand until it falls off the roller.
- Installing the new belt: The new belt is installed in reverse order.

### *Carbon brushes and cables*

- Worn carbon brushes must be replaced in pairs. Only use original brushes for this.
- The cable may only be replaced by a qualified electrician so that the device can maintain its safe operation.

### *Cleaning*

- The ventilation slots must be cleaned regularly so that the device can always be operated safely.
- Check at regular intervals for dust or foreign bodies in the protective ventilation grille, on the motor and around the switches. Use a soft brush to remove any dust accumulated. Wear eye protection while cleaning.
- The body of the device is cleaned with a soft, damp cloth. A mild detergent can be used for this.



**Warning!**

- Never clean the device with alcohol, petrol, or the like.
- Never use corrosive cleaning agents to clean the plastic parts of the device.
- Make sure that the device never comes into contact with water.



**Important!** To ensure that the device can always function safely and reliably, repair, maintenance, and adjustment work (including checking and replacing the carbon brushes) must be carried out by a qualified specialist and always using original spare parts.



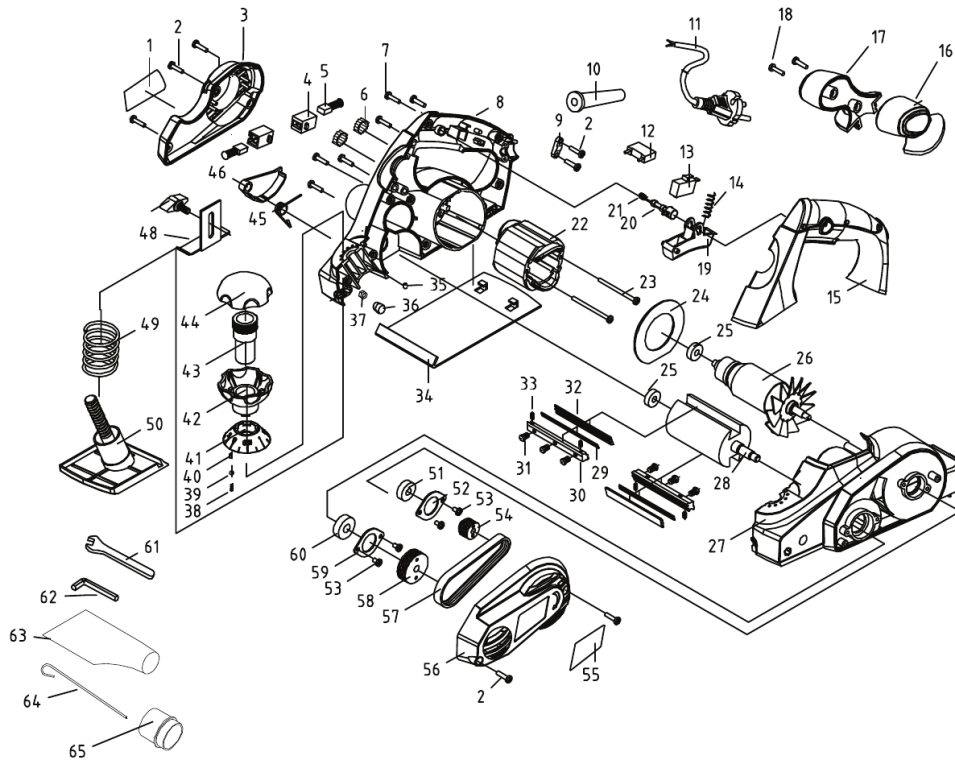
## Technical specifications

<b>Nominal voltage (V)</b>	230
<b>Frequency (Hz)</b>	50/60
<b>Nominal power (W)</b>	750
<b>Planing width (mm)</b>	82
<b>Planing depth (mm)</b>	3 ( $\pm 10$ %)
<b>Idle speed (<math>\frac{1}{\text{min}}</math>)</b>	16,000
<b>Noise emission (measured according to EN 60745):</b>	
<b>Noise pressure level <math>L_{pA}</math> (dB (A))</b>	87
<b>Uncertainty <math>K_{pA}</math> (dB)</b>	3
<b>Noise power level <math>L_{wA}</math> (dB (A))</b>	98
<b>Uncertainty <math>K_{wA}</math> (dB)</b>	3
<b>3-axis vibration emission (measured according to EN 60745):</b>	
<b><math>a_h</math> (<math>\frac{\text{m}}{\text{s}^2}</math>)</b>	7.68
<b>Uncertainty <math>K</math> (<math>\frac{\text{m}}{\text{s}^2}</math>)</b>	1.5

## Accessories

- Planing machine
- Parallel stop
- Depth stop
- Wrench
- Operation manual

**Exploded view and parts list**



No	Name	Qty.	No	Name	Qty.
1	Name plate (right)	1	34	Rear plate	1
2	Screw St4×14	7	35	Pin	1
3	Rear cover	1	36	Soft plug	1
4	Carbon brush holder	2	37	Nut M6	1
5	Carbon brushes	2	38	Spring	1
6	Inductor	2	39	Steel ball	1
7	Screw St4×16	9	40	Column	1
8	Housing (right)	1	41	Adjusting knob scale	1
9	Cable clamp	1	42	Adjusting knob	1
10	Cable sleeve	1	43	Shaft	1
11	Cable	1	44	Adjusting knob cover	1
12	Capacitor 0,33 µF	1	45	Spring	1
13	Switch	1	46	Protective cover	1
14	Spring	1	47	Screw	1
15	Handle	1	48	Depth stop	1
16	Front handle (left)	1	49	Adjustable spring	1
17	Front handle (right)	1	50	Adjustable plate	1
18	Screw St4×12	2	51	Bearing 608	1
19	Handle switch	1	52	Bearing cover 608	1
20	Lock-off button	1	53	Spring St4×10	6



<b>21</b>	Spring	1	<b>54</b>	Small wheel	1
<b>22</b>	Stator	1	<b>55</b>	Name plate (left)	1
<b>23</b>	Spring St4×55	2	<b>56</b>	Belt cover	1
<b>24</b>	Fan guide	1	<b>57</b>	Belt	1
<b>25</b>	Bearing 607	2	<b>58</b>	Big wheel	1
<b>26</b>	Rotor	1	<b>59</b>	Bearing cover 6000	1
<b>27</b>	Plastic housing (left)	1	<b>60</b>	Bearing 6000	1
<b>28</b>	Axis	1	<b>61</b>	Spanner	1
<b>29</b>	Planer knife	2	<b>62</b>	Inner hexagon wrench	1
<b>30</b>	Planer knife holder	2	<b>63</b>	Dust bag	1
<b>31</b>	Spring M5×8	6	<b>64</b>	Dust bag wire	1
<b>32</b>	Knife plank	2	<b>65</b>	Dust tube	1
<b>33</b>	Nut M5×8	4			

## Disposal regulations

EU guidelines regarding the disposal of scrap electric appliances (WEEE, 2012/19/EU) were implemented in the law related to electrical and electronic equipment and appliances.

All WiTec electric devices that fall under the WEEE regulations are labelled with the crossed-out wheeled waste bin logo. This logo indicates that this electric equipment must not be disposed with the domestic waste.

The company WiTec Technik GmbH has been registered in the German registry EAR under the WEEE-registration number DE45283704.

Disposal of used electrical and electronic appliances (intended for use in the countries of the European Union and other European countries with a separate collection system for these appliances).

The logo on the article or on its packaging points out that this article must not be treated as normal household waste but must be disposed to a recycling collection point for electronic and electrical waste equipment. By contributing to the correct disposal of this article you protect the environment and the health of your fellow men. Environment and health are threatened by inappropriate disposal.



Material recycling helps reduce the consumption of raw materials.

Additional information on recycling this article can be provided by your local community, municipal waste disposal facilities, or the store where you purchased the article.

Address:  
WiTec Wildanger Technik GmbH  
Königsbenden 12 / 28  
D-52249 Eschweiler

Important notice:

The reprint or reproduction, even of excerpts, and any commercial use, even in part, of this instruction manual require the written permission of WiTec Wildanger Technik GmbH.