

# Operation Manual

## Motorcycle Stand 63258



Illustration similar, may vary depending on model

Read and follow the operating instructions and safety information before using for the first time.

Technical changes reserved!

Due to further developments, illustrations, functioning steps, and technical data can differ insignificantly.

Updating the documentation

If you have suggestions for improvement or have found any irregularities, please contact us.



The information contained in this document may alter at any time without previous notice. It is prohibited to copy or spread any parts of this document in any way without prior written allowance. All rights reserved.

The WilTec Wildanger Technik GmbH cannot be held accountable for any possible mistakes in this operating manual, nor in the diagrams and figures shown.

Even though, the WilTec Wildanger Technik GmbH has undergone biggest possible efforts to ensure that the operating manual is complete, faultless, and up to date, mistakes cannot be entirely avoided.

If you should find a mistake or wish to make a suggestion for improvement, we look forward to hearing from you.

Send an e-mail to:

[service@wiltec.info](mailto:service@wiltec.info)

or use our contact form:

<https://www.wiltec.de/contacts/>

The most recent version of this manual in various languages can be found in our online shop via:

<https://www.wiltec.de/docsearch>

Our postal address is:

WilTec Wildanger Technik GmbH  
Königsbenden 12  
52249 Eschweiler  
Germany

To return orders for exchange, repair, or other purposes, please use the following address. Attention! To allow for a smooth execution of your complaint or return, it is important to contact our customer service team before returning the goods.

Returns Department  
WilTec Wildanger Technik GmbH  
Königsbenden 28  
52249 Eschweiler

E-mail: **service@wiltec.info**

Tel: +49 2403 55592-0

Fax: +49 2403 55592-15



## Introduction

Thank you for purchasing this quality product. **To minimise the risk of injury we urge that our clients take some basic safety precautions when using this device. Please read the operation instructions carefully and make sure you have understood its content.**

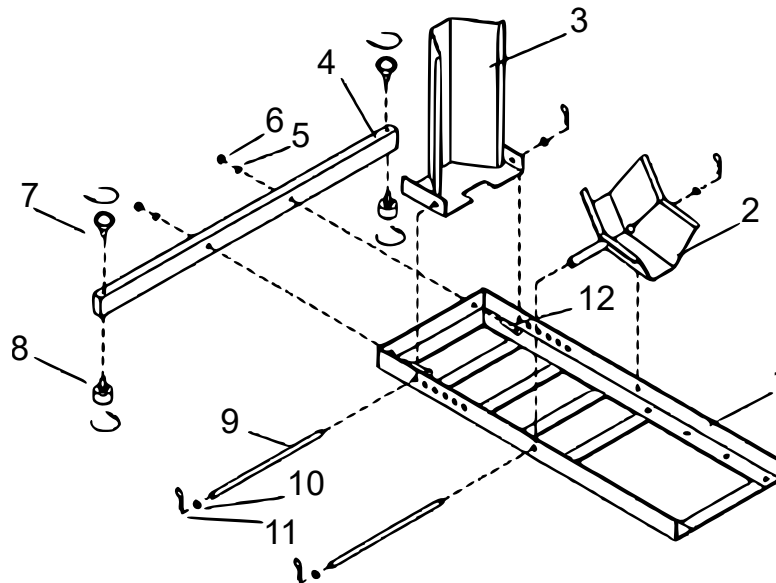
Keep these operation instructions safe.

## Safety instructions

**Caution!** Failure to observe these instructions may result in personal injury and/or damage to property.

- Only install the device according to the instructions in this manual. Any improper installation may result in hazards.
- Wear appropriate protective equipment such as safety goggles, work shoes, and protective gloves.
- Keep the work area clean and well lit. Untidy and poorly lit areas increase the risk of accidents.
- Keep bystanders away from your work area.
- Never assemble or use the stand under the influence of alcohol, drugs, or medicine.
- Data on weight capacity and other product characteristics apply only to products properly and completely assembled.
- The maximum load capacity of 454 kg must not be exceeded.
- Only use the stand on hard and level surfaces.
- Secure the wheel with a chock and strap the motorcycle before transport.
- Keep your distance from the stand/chock and the bike when loading and unloading.
- Load and unload the bike slowly.
- The stand is only suitable for motorcycle tyres. Do not use it for aircraft.
- Adjust the tyre size before use.
- If available, also use the kickstand.
- Do not ride the motorcycle onto the stand.
- Do not sit on the motorcycle when it is loaded on the stand.
- Check the stand before each use. Do not use it if any parts are loose or damaged.
- The warnings, precautions, and instructions in this manual cannot cover all possible conditions and situations that may occur. Therefore, always work with foresight and caution.

## Components



Nº	Name	Qty.	Nº	Name	Qty.
1	Base	1	7	Eyelet	2
2	Wheel adapter	1	8	Pad	2
3	Cradle stop	1	9	Pin	2
4	Support arm	1	10	Washer $\varnothing$ 12	4
5	Washer $\varnothing$ 10	2	11	R-pin	4
6	Nut M10	2	12	Bolt M10x45	2

## Mounting

1. Measure the wheel of the motorcycle before mounting so that the stand can be adjusted to the wheel length. The motorcycle stand is compatible with most standard motorcycles. Some models with extra wide tyres or custom low-profile front fenders are not compatible.
2. Mount the support arm (4) on the front of the base with 2 bolts (12), washers (5), and nuts (6).
3. Insert the pin (9) through the mounting holes and the large wheel mount (3). Secure with washer (10) and R-pin (11).
4. Insert the pin (9) through the mounting holes and the wheel adapter (2). Secure it with the washer (10) and R-pin (11).
5. Tighten all hardware firmly before use.

**Note!** Assemble the stand safely and properly before use.

### Mounting in concrete

1. Select a flat and level location for mounting the motorcycle that can support both the weight of the stand and of the motorcycle to be secured. The location should not obstruct walkways and should provide sufficient space to retrieve the motorcycle after mounting. The surface of the location should be suitable for mounting heavy equipment.
2. Use the mounting holes in the base (1) as a template. Place the base in the desired location and mark where the holes are to be drilled.
3. Use concrete anchors (not included) to fix the base to the concrete base. Drill the fixing holes with a concrete drill of the correct size (not included).
4. Insert the concrete anchors into the holes. Secure the base to the ground with concrete anchors.



### *Mounting on truck bed/motorcycle lift mounting*

1. Place the base in the desired location on the truck bed or motorcycle lift. Use the holes in the base as a pattern to mark where to drill the holes to secure the stand.  
**Warning!** Make sure that the installation surface has no hidden cables, brake lines, etc. before drilling.
2. Use a power drill (not included) and a steel cutting drill bit (not included) to drill holes in the loading surface or the lifting platform.
3. Attach the base to the truck bed using the appropriate hardware (not included).

### **Operating instructions**

1. Select the correct mounting hole for the motorcycle to be loaded onto the stand and adjust the position of the wheel adapter to the tyre length.
2. To load a motorcycle, lower the wheel adapter to the horizontal position and simply slide the motorcycle into the stand. The wheel adapter closes around the motorcycle tyre and secures the motorcycle in an upright position.
3. Secure the motorcycle with straps or belts (not included).  
**Caution!** Do not sit on the motorcycle when it is loaded in the motorcycle stand.
4. To dismount the motorcycle, pull back firmly and steadily until the motorcycle rolls off the stand.

### **Maintenance**

**Warning!** Damaged products may fail and cause injury. Do not use any damaged product. If abnormal noise or vibration occurs, have the problem corrected before further use.

#### *Before use*

Check the general condition of the stand. Check for loose screws, misaligned, jammed, cracked, or broken parts, and any other condition that could affect safe operation.

#### *After use*

Clean the exterior surfaces of the stand with a clean, damp cloth.

### Important notice:

The reprint or reproduction, even of excerpts, and any commercial use, even in part, of this instruction manual require the written permission of WiITec Wildanger Technik GmbH.