

User's manual

Aluminium Roof Rack for Kayaks

63259

toboli



Illustration similar, may vary depending on model

Please read and follow the operating instructions and safety information prior to initial operation.

Technical changes reserved!

Illustrations, functional steps, and technical data may deviate insignificantly due to continuous further developments.



The information contained in this document may alter at any time without prior notice. No part of this document may be copied or otherwise duplicated without prior written consent. All rights reserved. WilTec Wildanger Technik GmbH cannot be held liable for any possible mistakes in this operating manual, nor in the diagrams and illustrations shown.

Although WilTec Wildanger Technik GmbH has made every possible effort to ensure that this operating manual is complete, accurate, and up-to-date, errors cannot be ruled out entirely.

If you have found an error or wish to suggest an improvement, we look forward to hearing from you. Send us an e-mail to:

service@wiltec.info

or use our contact form:

<https://www.wiltec.de/contacts/>

The most recent version of this manual in several languages can be found in our online shop:

<https://www.wiltec.de/docsearch>

Our postal address is:

WilTec Wildanger Technik GmbH
Königsbenden 12
52249 Eschweiler – Germany

To return your goods for exchange, repair, or other purposes, please use the following address. Attention! To allow for a trouble-free complaint or return, it is important to contact our customer service team before returning your goods.

Retourenabteilung
WilTec Wildanger Technik GmbH
Königsbenden 28
52249 Eschweiler – Germany

E-mail: **service@wiltec.info**

Tel: +49 2403 55592-0

Fax: +49 2403 55592-15

Introduction

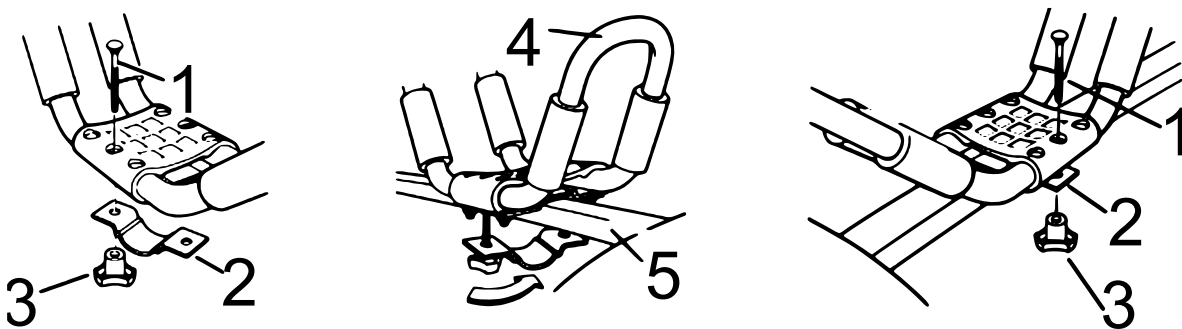
Thank you for choosing to purchase this quality product. To minimise the risk of injury, we ask you to always take some basic safety precautions when using this product. Please read this operating manual carefully and make sure that you understand it. Keep these operation instructions in a safe place.

Safety instructions

- Before charging the rack, make sure that this is fixed securely and undamaged.
- Take into account the roof load and admissible total weight of your vehicle. The maximum weight must not be exceeded.
- The maximum load capacity of the rack is 45 kg or 68 kg. The maximum capacity must not be exceeded.
- When transporting your kayak, respect the legal traffic rules. In Germany, for example, the vehicle charged must not exceed a width of 2.55 m and a height of 4 m. If necessary, inform yourself about the relevant regulations of your respective country.
- Make sure that the load is correctly secured with the help of fixing straps and tension belts.
- Regularly check the load and fixation.
- Adapt your driving style to the additional load.

Assembly

1. Place the roof rack onto the cross members of your vehicle. One rack is placed onto the front cross member, the other rack is placed onto the rear cross member. The recommended distance between the cross members is 90 cm.
2. When both roof racks are correctly centred on the cross members, place the mounting supports directly under the cross members so that the holes of the roof rack and mounting supports match.
3. Insert the screws included through the upper holes of the roof rack and the holes of the support beneath the roof rack, then tighten them with the fixing knobs. When both roof racks are securely fixed to the crossmembers, use the lever on the side of each rack to adjust the angle of each roof rack.
4. Adjust the arm corresponding to the size of your kayak.



Nº	Name	Nº	Name
1	Fixing screw	4	Holder
2	Bracket	5	Cross member
3	Fixing knob		



Two kayaks



One large kayak

Proper use

- Lift the kayak and place it onto the roof rack with its seat opening pointing outwards. The middle part of the kayak should sit evenly on both roof racks. The weight of the kayaks should be distributed evenly on both the front and rear rack.
- Fix the kayak with the fixing straps on the roof rack. First loop the strap around the upper part of the roof rack. Then pass the fixing strap downwards via the front part of the kayak, between the underside of the roof rack and around the crossbar (see Fig. 1).
- Fix the nose and tail of your kayak with safety ropes to your vehicle (see Fig. 2).
- Un-adapted speed, wind, sharp bends, and sudden breaking might provoke shifting of both kayak and roof rack. Therefore, regularly check the racks, all screws, and straps for correct adjustment, wear and tear, and damage.



Figure 1



Figure 2

Important Note:

Reproduction and any commercial use (of parts) of this operating manual, requires a written permission of WilTec Wildanger Technik GmbH.